

Product datasheet for **RC218521**

TRIM47 (NM_033452) Human Tagged ORF Clone

Product data:

Product Type:	Expression Plasmids
Product Name:	TRIM47 (NM_033452) Human Tagged ORF Clone
Tag:	Myc-DDK
Symbol:	TRIM47
Synonyms:	GOA; RNF100
Mammalian Cell Selection:	Neomycin
Vector:	pCMV6-Entry (PS100001)
E. coli Selection:	Kanamycin (25 ug/mL)



[View online »](#)

ORF Nucleotide
Sequence:

>RC218521 representing NM_033452
Red=Cloning site Blue=ORF Green=Tags(s)

TTTTGTAATACGACTCACTATAGGGCGGCCGGGAATTCGTCGACTGGATCCGGTACCGAGGAGATCTGCC
GCC**CGGATCGCC**

ATGGACGGCAGTGGACCCTTCAGCTGCCCATCTGCCTAGAGCCACTCCGGGAGCCGGTGACGCTGCCCT
GCGGCCACAACCTTCTGTCTCGCCTGCCTGGGCGCGCTCTGGCCGATCGTGGCGGAGTGGAGCCGGCGG
ACCCGGAGGCGCGGCCCGCTGCCGCTGTGCCAGGAGCCCTCCCGACGGCCTTCAGCTCCGCAAGAAC
CACACGCTGTCCGAGCTGCTGCAGCTCCGCCAGGGCTCGGGCCCCGGTCCGGCCCCGGCCCGCCCTG
CCCTGGCCCCGGAGCCCTCGGCACCCAGCGCGTGCCTAGTGTCCGGAGCCGTGGCCCCCTGCCTCC
CGAGCCGTGGCCCCGGGCGAAGAGCCAGTGGCTGCGACGCGTGCCTCGAGGGCGCGCCCTGCCCGC
GCGCTGTCTGCCTCTCCTGCCTCGCTCCTTTGCCCGCGCACCTGGGCCCGACGAGCGCAGCCCCG
CCCTCCGCGGACACCGCCTGGTCCGCCGCTGCGCCGGCTAGAGGAGAGCCTGTGCCCGCCACCTACG
GCCGCTCGAGCGCTACTGCCGCGGAGCGCGTGTGTCTGTGCGAGGCCGCGCCGCACAGGAGCACCGC
GGCCACGAGCTGGTGGCCTGGAGCAGGAGCGCGCTTCAGGAGGCTGAGCAGTCCAAAGTCTGAGCG
CCGTGGAGGACCGCATGGACGAGCTGGGTGCTGGCATTGCACAGTCCAGGCGCACAGTGGCCCTCATCAA
GAGTGCAGCCGTAGCAGAGCGGGAGAGGGTGGCCGGCTGTTGCAGATGCTGCGGCCGCCCTGCAGGGC
TTCCAGACCCAGGTGCTGGGCTTCATCGAGGAGGGGAAGCTGCCATGCTAGGCCGCTCCAGGGTGACC
TGCGGGCAGAGGAGAACAGCGCAGCCGCTGAGCCGAGCCCGCCAGAATCTCAGCCAGGTCCCTGAAGC
TGACTCAGTCAGTTCCTGCAGGAGCTGCTGGCACTAAGGCTGGCCCTGGAGGATGGGTGTGGCCCTGGG
CCGTGGCCTGCGTCAACCAGTGGGAGCAGCTGAGGGGGCCGGTGGCAACGAGGATGGGCCACAGAAGCT
GGACTCGGAAGCTGATGCTGAGCCCAAGACCTCGAGAGTACGAACCTCTTGGAGAGTGAAGCTCCAGG
GACTATTTCTCAAGTTTGCCTATATTGTGGATTTGGACAGCGACACAGCAGACAAGTTCCTGCAGCTGT
TTGGAACCAAAGGTGTCAGAGGGTGTGTGCTATCAACTACCCCTTGTGCCCCACCCGCTTCACCCA
TTGTGAGCAGGTGCTGGGCGAGGGTGCCTGGACCGAGGCACCTACTACTGGGAGGTGGAGATTATCGAG
GGCTGGGTGAGCATGGGGTTCATGGCCGAAGACTTCTCCCACAAGAGCCCTACGACCGCGGCCGGCTGG
GCCGAACGCCACTCCTGCTGCCTGCAGTGAATGGACGAGCTTCTCCGTCTGGTTTCATGGGCTGGA
GGCTCCCTGCCCAACCCTTCTGCCCCAGGTTGGGGTCTGCCTGGAATACGCTGACCGTGCCTTGCC
TTCTATGCTGTACGGGACGGCAAGATGAGCCTCCTGCGGAGGCTGAAGGCTCCCGGCCCGCCGGGGT
GCATCCCGGCCTCCCCATTGACCCCTCCAGAGCCGCTGGACAGTCACTTTGCGGGGCTTTACCCA
CAGACTCAAGCCTGCCTTCTCCTGGAGAGTGTGGACGCCCACTTCAGATCGGGCCCTCAAGAAGTCC
TGCATATCCGTGCTGAAGAGGAGG

AG**CGGACCG**ACGCGTACGCGGCCGCTCGAGCAGAACTCATCTCAGAAGAGGATCTGGCAGCAAATGATATCC
TGGATTACAAGGATGACGACGATAAGGTTAA

Protein Sequence: >RC218521 representing NM_033452
Red=Cloning site Green=Tags(s)

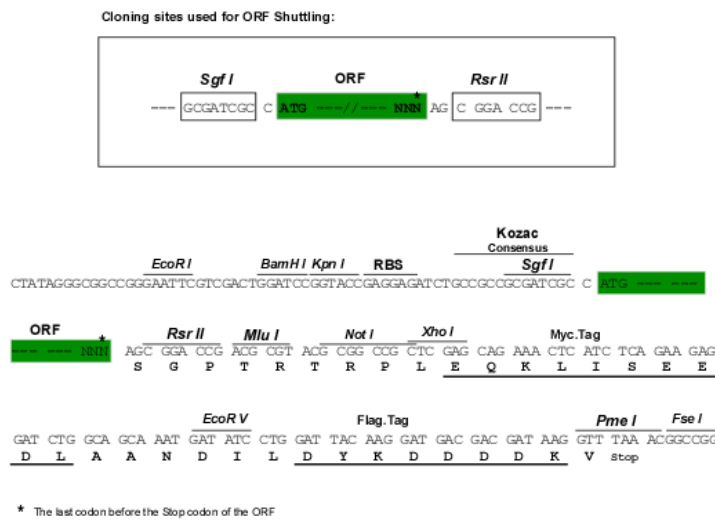
```
MDGSGPFSCPICLEPLREPVTLPCHGNFCLAELGALWPHRGASGAGGPGGAARCPLCQEPFPDGLQLRKN
HTLSELLQLRQSGPGSGPGPAPALAPEPSAPSALPSVPEPSAPCAPEPWAGEEPPVRCDACPEGAALPA
AL SCL SCLASFCPAHLGPHERSPALRGHRLVPPLRRL EESLCPRHRLPLERYCRAERVCLCEACAAQEHR
GH E L V P L E Q E R A L Q E A E Q S K V L S A V E D R M D E L G A G I A Q S R R T V A L I K S A A V A E R E R V S R L F A D A A A A L Q G
F Q T Q V L G F I E E G E A A M L G R S Q G D L R R Q E E Q R S R L S R A R Q N L S Q V P E A D S V S F L Q E L L A L R L A L E D G C G P G
P G P P R E L S F T K S S Q A V R A V R D M L A V A C V N Q W E Q L R G P G G N E D G P Q K L D S E A D A E P Q D L E S T N L L E S E A P R
D Y F L K F A Y I V D L D S D T A D K F L Q L F G T G K V K R V L C P I N Y P L S P T R F T H C E Q V L G E G A L D R G T Y Y W E V E I I E
G W V S M G V M A E D F S P Q E P Y D R G R L G R N A H S C C L Q W N G R S F S V W F H G L E A P L P H P F S P T V G V C L E Y A D R A L A
F Y A V R D G K M S L L R R L K A S R P R R G G I P A S P I D P F Q S R L D S H F A G L F T H R L K P A F F L E S V D A H L Q I G P L K K S
C I S V L K R R
```

SGPTRRRLEQKLISEEDLAANDILDYKDDDDKV

Chromatograms: https://cdn.origene.com/chromatograms/mk8021_g01.zip

Restriction Sites: SgfI-RsrII

Cloning Scheme:



ACCN: NM_033452

ORF Size: 1914 bp

OTI Disclaimer: The molecular sequence of this clone aligns with the gene accession number as a point of reference only. However, individual transcript sequences of the same gene can differ through naturally occurring variations (e.g. polymorphisms), each with its own valid existence. This clone is substantially in agreement with the reference, but a complete review of all prevailing variants is recommended prior to use. [More info](#)

OTI Annotation: This clone was engineered to express the complete ORF with an expression tag. Expression varies depending on the nature of the gene.

Components: The ORF clone is ion-exchange column purified and shipped in a 2D barcoded Matrix tube containing 10ug of transfection-ready, dried plasmid DNA (reconstitute with 100 ul of water).

Reconstitution Method:

1. Centrifuge at 5,000xg for 5min.
2. Carefully open the tube and add 100ul of sterile water to dissolve the DNA.
3. Close the tube and incubate for 10 minutes at room temperature.
4. Briefly vortex the tube and then do a quick spin (less than 5000xg) to concentrate the liquid at the bottom.
5. Store the suspended plasmid at -20°C. The DNA is stable for at least one year from date of shipping when stored at -20°C.

Note: Plasmids are not sterile. For experiments where strict sterility is required, filtration with 0.22um filter is required.

RefSeq: [NM_033452.3](#)

RefSeq Size: 2268 bp

RefSeq ORF: 1917 bp

Locus ID: 91107

UniProt ID: [Q96LD4](#)

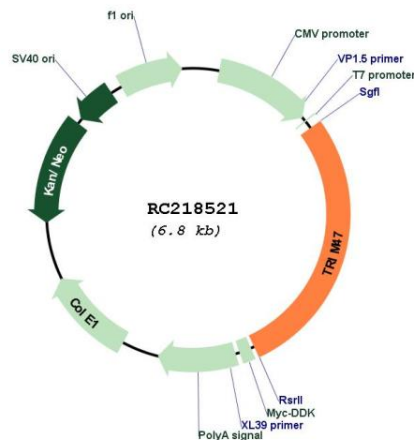
Cytogenetics: 17q25.1

Protein Families: Druggable Genome

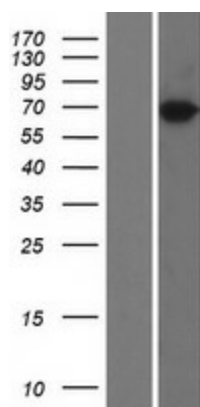
MW: 69.4 kDa

Gene Summary: E3 ubiquitin-protein ligase that mediates the ubiquitination and proteasomal degradation of CYLD.[UniProtKB/Swiss-Prot Function]

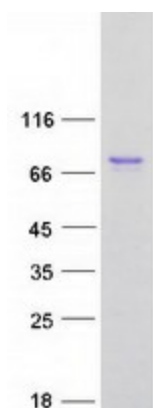
Product images:



Circular map for RC218521



Western blot validation of overexpression lysate (Cat# [LY409515]) using anti-DDK antibody (Cat# [TA50011-100]). Left: Cell lysates from untransfected HEK293T cells; Right: Cell lysates from HEK293T cells transfected with RC218521 using transfection reagent MegaTran 2.0 (Cat# [TT210002]).



Coomassie blue staining of purified TRIM47 protein (Cat# [TP318521]). The protein was produced from HEK293T cells transfected with TRIM47 cDNA clone (Cat# RC218521) using MegaTran 2.0 (Cat# [TT210002]).