

Product datasheet for RC218516

LAMC2 (NM_018891) Human Tagged ORF Clone

Product data:

Product Type:	Expression Plasmids
Product Name:	LAMC2 (NM_018891) Human Tagged ORF Clone
Tag:	Myc-DDK
Symbol:	LAMC2
Synonyms:	B2T; BM600; CSF; EBR2; EBR2A; LAMB2T; LAMNB2
Mammalian Cell Selection:	Neomycin
Vector:	pCMV6-Entry (PS100001)
E. coli Selection:	Kanamycin (25 ug/mL)
ORF Nucleotide Sequence:	>RC218516 ORF sequence Red=Cloning site Blue=ORF Green=Tags(s)

TTTTGTAATACGACTCACTATAGGGCGGCCGGAATTCGTCGACTGGATCCGGTACCGAGGAGATCTGCC
GCC**CGATCGCC**

ATGCTGCGCTCTGGCTGGGCTGCTGCCTCTGCTTCTCGCTCCTGCCCCGAGCCCGGGCCACCTCCA
GGAGGGAAGTCTGTGATTGCAATGGGAAGTCCAGGCAGTGTATCTTTGATCGGAACTTCACAGACAAAC
TGGTAATGGATCCGCTGCCTCACTGCAATGACAACACTGATGGCATTCACTGCGAGAAGTCAAGAAT
GGCTTTTACCGGCACAGAGAAAGGGACCGCTGTTGCCCTGCAATTGTAACCTCAAAGGTTCTCTTAGTG
CTCGATGTGACAACCTCCGACGGTGCAGCTGTAACCAGGTGTGACAGGAGCCAGATGCGACCGATGCT
GCCAGGCTTCCACATGCTCATGGATGCGGGGTGCACCCAAGACCAGAGACTGCTAGACTCCAAGTGTGAC
TGTGACCCAGCTGGCATCGCAGGGCCCTGTGACGCGGGCCGCTGTGTCTGCAAGCCAGCTGTCACTGGAG
AACGCTGTGATAGGTGTGATCAGGTTACTATAATCTGGATGGGGGAACCCCTGAGGGCTGTACCCAGTG
TTTCTGCTATGGGCATTAGCCAGCTGCCGAGCTCTGCAGAATACAGTGTCCATAAGATCACTCTACC
TTTCATCAAGATGTTGATGGCTGGAAGGCTGTCCAACGAAATGGGTCTCTGCAAAGCTCCAATGGTCAC
AGCGCCATCAAGATGTGTTAGCTCAGCCCAACGACTAGACCTGTCTATTTTGTGGCTCCTGCCAATT
TCTTGGGAATCAACAGGTGAGCTATGGTCAAAGCTGTCTTTGACTACCGTGTGGACAGAGGAGGCAGA
CACCCATCTGCCCATGATGTGATTTGGAAGGTGCTGGTCTACGGATCACAGCTCCCTTGATGCCACTTG
GCAAGACACTGCCTTGTGGGCTCACCAAGACTTACACATTCAGGTTAAATGAGCATCCAAGCAATAATTG
GAGCCCCAGCTGAGTTACTTTGAGTATCGAAGGTTACTGCGGAATCTCACAGCCCTCCGCATCCGAGCT
ACATATGGAGAATACAGTACTGGGTACATTGACAATGTGACCCTGATTTAGCCCCCCTGTCTCTGGAG
CCCCAGCACCCCTGGGTTGAACAGTGTATATGTCCTGTTGGGTACAAGGGGCAATTCTGCCAGGATTGTGC
TTCTGGCTACAAGAGAGATTGAGGAGACTGGGGCCTTTTGGCACCTGTATTCTTGTAACTGTCAAGGG
GGAGGGGCTGTGATCCAGACACAGGAGATTGTTATTCAGGGGATGAGAATCCTGACATTGAGTGTGCTG
ACTGCCAATTGGTTTCTACAACGATCCGACGACCCCGCAGCTGCAAGCCATGTCCTGTGATAACGG
GTTGAGCTGCTCAGTGTGCCGAGACGGAGGAGTGGTGTGCAATAACTGCCCTCCCGGGTACCAGG



GCCCCGTGTGAGCTCTGTGCTGATGGCTACTTTGGGGACCCCTTTGGTGAACATGGCCCAGTGAGGCCTT
 GTCAGCCCTGTCAATGCAACAACAAATGTGGACCCAGTGCCTCTGGGAATTGTGACCCGGCTGACAGGCAG
 GTGTTTGAAGTGTATCCACAACACAGCCGGCATCTACTGCGACCAGTGCAAAGCAGGCTACTTCGGGGAC
 CCATTGGCTCCCAACCCAGCAGACAAGTGTGAGCTTGAACCTGTAAACCCATGGGCTCAGAGCCTGTAG
 GATGTCGAAGTGTGGCACCTGTGTTTGAAGCCAGGATTTGGTGGCCCCAACTGTGAGCATGGAGCATT
 CAGCTGTCCAGCTTGTATAATCAAGTGAAGATTTCAGATGGATCAGTTTATGCAGCAGCTTCAGAGAATG
 GAGGCCCTGATTTCAAAGGCTCAGGGTGGTGTGAGTGTGAGTACCTGATACAGAGCTGGAAGGCAGGATGC
 AGCAGGCTGAGCAGGCCCTTCAGGACATTCTGAGAGATGCCAGATTTTCAGAAAGGTGCTAGCAGATCCCT
 TGGTCTCCAGTTGGCCAAGGTGAGGAGCCAAGAGAACAGCTACCAGAGCCGCCTGGATGACCTCAAGATG
 ACTGTGAAAAGAGTTTCGGGCTCTGGGAAGTCAGTACCAGAACCGAGTTTCGGGATACTCACAGGCTCATCA
 CTCAGATGCAGCTGAGCCTGGCAGAAAGTGAAGCTTCTTGGGAAACACTAACATTCCTGCCTCAGACCA
 CTACGTGGGGCCAAATGGCTTTAAAAGTCTGGCTCAGGAGGCCACAAGATTAGCAGAAAGCCACGTTGAG
 TCAGCCAGTAACATGGAGCAACTGACAAGGAAACTGAGGACTATTCAAACAAGCCCTCTACTGGTGC
 GCAAGGCCCTGCATGAAGGAGTCGGAAGCGGAAGCGGTAGCCCGACGGTGTGTGGTCAAGGGCTTGT
 GGAAAAATTTGGAGAAAACCAAGTCCCTGGCCAGCAGTTGACAAGGGAGGCCACTCAAGCGGAAATTGAA
 GCAGATAGGTCTTATCAGCACAGTCTCCGCCTCTGGATTTCAGTGTCTCGGCTTCAGGGAGTCAGTGATC
 AGTCTTTTCAGGTGGAAGAAGCAAGAGGATCAAAACAAAAGCGGATTCCTCTCAAGCCTGGTAACCAG
 GCATATGGATGAGTTCAAGCGTACACAGAAGAATCTGGGAAACTGGAAAGAAGAAGCACAGCAGCTCTTA
 CAGAATGGAAAAAGTGGGAGAGAGAAAATCAGATCAGCTGCTTTCCTGCAATCTTGTAAAAGCAGAG
 CACAAGAAGCACTGAGTATGGGCAATGCCACTTTTTATGAAGTTGAGAGCATCCTTAAAACTCAGAGA
 GTTTGACCTGCAGGTGGACAACAGAAAAGCAGAAGCTGAAGAAGCCATGAAGAGACTCTCTACATCAGC
 CAGAAGGTTTCAGATGCCAGTGAACAAGCCAGCAAGCAGAAAGAGCCCTGGGGAGCGCTGCTGTGATG
 CACAGAGGGCAAAGAATGGGGCCGGGAGGCCCTGGAAATCTCCAGTGAAGTGAACAGGAGATTTGGGAG
 TCTGAACCTTGGAAAGCAATGTGACAGCAGATGGAGCCTTGGCCATGGAAAAGGGACTGGCCTCTCTGAAG
 AGTGAGATGAGGGAAGTGAAGGAGAGCTGGAAGGAAGGAGCTGGAGTTTACACGAATATGGATGCAG
 TACAGATGGTATTACAGAAGCCAGAAGTTGATACCAGAGCCAAGAAGCTGGGGTTACAATCCAAGA
 CACACTCAACACATTAGACGGCCTCTGCATCTGATGGGTATG

ACGCGTACGCGGCCGCTCGAGCAGAAACTCATCTCAGAAGAGGATCTGGCAGCAATGATATCCTGGATT
 ACAAGGATGACGACGATAAGGTTTAA

Protein Sequence:

>RC218516 protein sequence
 Red=Cloning site Green=Tags(s)

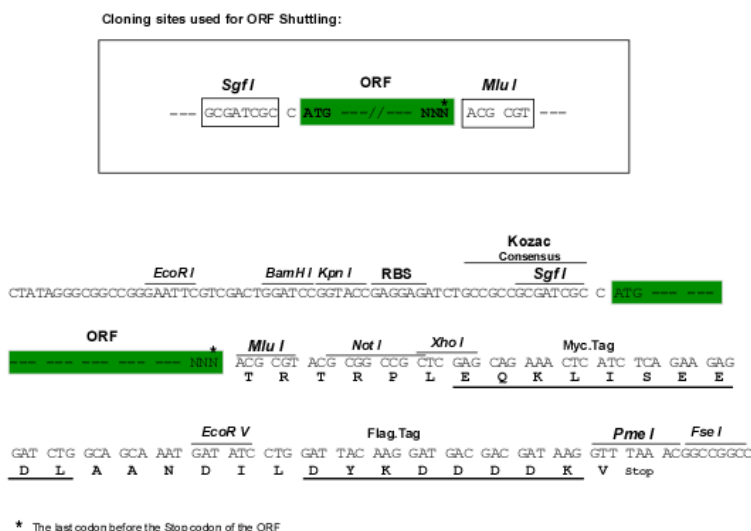
MPALWLGCCLCFSLLLPAARATSRREVDCNKGSRQCFDRELHRQTGNGFRCLNCNDNTDGIHCEKCKN
 GFYRHRERDRCLPCNCNSKGSLSARCDNSGRCSCKPGVTGARCDRCLPGFHMLMDAGCTQDQRLDLSKCD
 CDPAGIAGPCDAGRCVCKPAVTGERCDRCRSGYNNLDGGNPEGCTQCFCYGHSASCRSSAEYSVHKITST
 FHQDVGWKAQVRNGSPAKLQWSQRHQDVFSSAQRLDPVYFVAPAKFLGNQQVSYGQSLSFYDVRDRGGR
 HPSAHDVILEGALRITAPLMPLGKTLPCGLTKTYTFRLNEHPSNNWSPQLSYFEYRRLRLNLTALRIRA
 TYGEYSTGYIDNVTLISARPVSGAPAPWVEQCICPVGYKQFCQDCASGYKRDSARLGPFGTICPCNCQG
 GGACDPDPTGDCYSGDENPDIECADCPIGFYNDPHDPRSCPCPCHNGFSCSVMPEEVEVNCNPPGVTG
 ARCELCADGYFGDPFGEHGPVPRPCQPCQNNVDPASAGNCDRLTGRCLKCIHNTAGIYCDQCKAGYFGD
 PLAPNPADKCRACNCNPMGSEVPVGRSDGTVCCKPGFGGPNCEHGAFSCPACYNQVKIQMDQFMQQLQRM
 EALISKAQGGDGVVPDTELEGRMQQAEQALQDILRDAQISEGASRSLGLQLAKVRSQENSYSRLDDLKM
 TVERVRALGSQYQNRVDRDTHRLITQMQLSLAESEASLGNTNIPASDHVYVGPNGFKSLAQEATRLAESHVE
 SASNMEQLTRETEDYSKQALSLVRKALHEGVSGSGSPDGAUVVQGLVEKLEKTKSLAQQLTREATQAEIE
 ADRSYQHSRLRLDSVSRLQGVSDQSFQVEEAKRIKQKADLSSLVTRHMDEFKRTQKNLGNWKEEAQQLL
 QNGKSGREKSDQLL SRANLAKSRAQEALSMGNATFYEVE SILKNLREFDLQVDNRKAEAEAMKRLSYIS
 QKVSDASDKTQQAERALGSAADAQRAKNGAGEALEISSEIEQEIGSLNLEANVTADGALAMEKGLASLK
 SEMREVEGELERKELEFDNMDAVQMVITEAQKVDTRAKNAGVTIQDTLNTLDGLLHLMGM

TRTRPLEQKLISEEDLAANDILDYKDDDDKV

Chromatograms: https://cdn.origene.com/chromatograms/mk6609_e08.zip

Restriction Sites: SgfI-MluI

Cloning Scheme:



ACCN: NM_018891

ORF Size: 3333 bp

OTI Disclaimer: The molecular sequence of this clone aligns with the gene accession number as a point of reference only. However, individual transcript sequences of the same gene can differ through naturally occurring variations (e.g. polymorphisms), each with its own valid existence. This clone is substantially in agreement with the reference, but a complete review of all prevailing variants is recommended prior to use. [More info](#)

OTI Annotation: This clone was engineered to express the complete ORF with an expression tag. Expression varies depending on the nature of the gene.

Components: The ORF clone is ion-exchange column purified and shipped in a 2D barcoded Matrix tube containing 10ug of transfection-ready, dried plasmid DNA (reconstitute with 100 ul of water).

Reconstitution Method:

1. Centrifuge at 5,000xg for 5min.
2. Carefully open the tube and add 100ul of sterile water to dissolve the DNA.
3. Close the tube and incubate for 10 minutes at room temperature.
4. Briefly vortex the tube and then do a quick spin (less than 5000xg) to concentrate the liquid at the bottom.
5. Store the suspended plasmid at -20°C. The DNA is stable for at least one year from date of shipping when stored at -20°C.

RefSeq: [NM_018891.3](#)

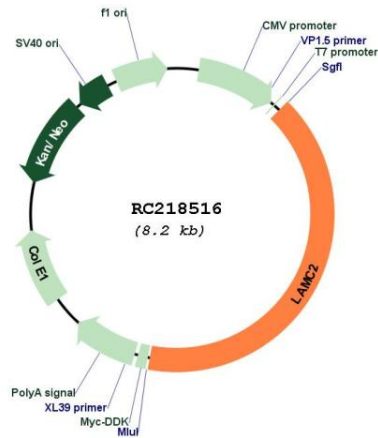
RefSeq Size: 4522 bp

RefSeq ORF: 3336 bp

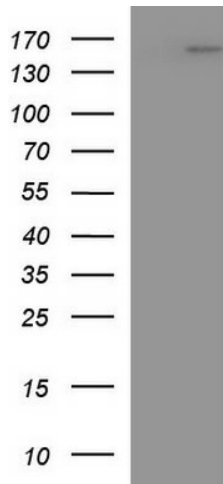
Locus ID: 3918

UniProt ID:	Q13753
Cytogenetics:	1q25.3
Domains:	LamB, EGF_Lam
Protein Families:	Druggable Genome, Secreted Protein
Protein Pathways:	ECM-receptor interaction, Focal adhesion, Pathways in cancer, Small cell lung cancer
MW:	121.6 kDa
Gene Summary:	<p>Laminins, a family of extracellular matrix glycoproteins, are the major noncollagenous constituent of basement membranes. They have been implicated in a wide variety of biological processes including cell adhesion, differentiation, migration, signaling, neurite outgrowth and metastasis. Laminins, composed of 3 non identical chains: laminin alpha, beta and gamma (formerly A, B1, and B2, respectively), have a cruciform structure consisting of 3 short arms, each formed by a different chain, and a long arm composed of all 3 chains. Each laminin chain is a multidomain protein encoded by a distinct gene. Several isoforms of each chain have been described. Different alpha, beta and gamma chain isomers combine to give rise to different heterotrimeric laminin isoforms which are designated by Arabic numerals in the order of their discovery, i.e. alpha1beta1gamma1 heterotrimer is laminin 1. The biological functions of the different chains and trimer molecules are largely unknown, but some of the chains have been shown to differ with respect to their tissue distribution, presumably reflecting diverse functions in vivo. This gene encodes the gamma chain isoform laminin, gamma 2. The gamma 2 chain, formerly thought to be a truncated version of beta chain (B2t), is highly homologous to the gamma 1 chain; however, it lacks domain VI, and domains V, IV and III are shorter. It is expressed in several fetal tissues but differently from gamma 1, and is specifically localized to epithelial cells in skin, lung and kidney. The gamma 2 chain together with alpha 3 and beta 3 chains constitute laminin 5 (earlier known as kalinin), which is an integral part of the anchoring filaments that connect epithelial cells to the underlying basement membrane. The epithelium-specific expression of the gamma 2 chain implied its role as an epithelium attachment molecule, and mutations in this gene have been associated with junctional epidermolysis bullosa, a skin disease characterized by blisters due to disruption of the epidermal-dermal junction. Two transcript variants resulting from alternative splicing of the 3' terminal exon, and encoding different isoforms of gamma 2 chain, have been described. The two variants are differentially expressed in embryonic tissues, however, the biological significance of the two forms is not known. Transcript variants utilizing alternative polyA_signal have also been noted in literature. [provided by RefSeq, Aug 2011]</p>

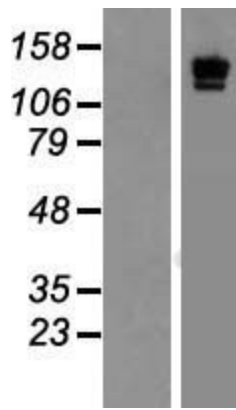
Product images:



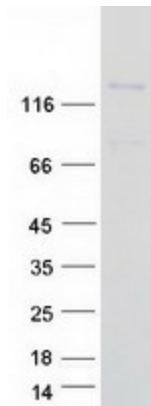
Circular map for RC218516



HEK293T cells were transfected with the pCMV6-ENTRY control (Cat# [PS100001], Left lane) or pCMV6-ENTRY LAMC2 (Cat# RC218516, Right lane) cDNA for 48 hrs and lysed. Equivalent amounts of cell lysates (5 ug per lane) were separated by SDS-PAGE and immunoblotted with anti-LAMC2(Cat# [TA590484]). Positive lysates [LY412907] (100ug) and [LC412907] (20ug) can be purchased separately from OriGene.



Western blot validation of overexpression lysate (Cat# [LY412907]) using anti-DDK antibody (Cat# [TA50011-100]). Left: Cell lysates from untransfected HEK293T cells; Right: Cell lysates from HEK293T cells transfected with RC218516 using transfection reagent MegaTran 2.0 (Cat# [TT210002]).



Coomassie blue staining of purified LAMC2 protein (Cat# [TP318516]). The protein was produced from HEK293T cells transfected with LAMC2 cDNA clone (Cat# RC218516) using MegaTran 2.0 (Cat# [TT210002]).