

Product datasheet for RC218501

QRFP (NM_198180) Human Tagged ORF Clone

Product data:

Product Type: Expression Plasmids
Product Name: QRFP (NM_198180) Human Tagged ORF Clone
Tag: Myc-DDK
Symbol: QRFP
Synonyms: 26RFa; P518
Mammalian Cell Selection: Neomycin
Vector: pCMV6-Entry (PS100001)
E. coli Selection: Kanamycin (25 ug/mL)
ORF Nucleotide Sequence: >RC218501 ORF sequence
 Red=Cloning site Blue=ORF Green=Tags(s)

TTTTGTAATACGACTCACTATAGGGCGGCCGGAATTCGTCGACTGGATCCGGTACCGAGGAGATCTGCC
 GCC**CGGATCGCC**

ATGGTAAGGCCTTACCCCTGATCTACTTCTCTCTGCGCCTGGGCGCCTGCTTCCCTCTACTGGACA
 GAAGAGAGCCCACAGACGCCATGGGTGGCTCGGAGCTGGAGAACGCTGGGCCGACCTGGCCATGGGGCC
 CCGACCCACTCCGTGTGGGTTCTCTCGGTGGCTGAGAGCTTACAGCCACAGGCCCTGCTTGTGATA
 GCCAGGGGCTGCAGACATCGGGCAGAGAGCATGCTGGCTGCAGATTCCGCTTCGGGAGGCAGGACGAAG
 GCAGTGAGGCCACCGGTTCTCCCTGCTGCGGGGAGAAGACCAGCGGCCCGTTAGGGAACCTGGCTGA
 GGAGCTCAATGGCTACAGCAGGAAGAAAGCGGCTTCAGCTTCCGCTTCGGTTCGGCGG

ACGCGTACGCGGCCGCTCGAGCAGAACTCATCTCAGAAGAGGATCTGGCAGCAAATGATATCCTGGATT
 ACAAGGATGACGACGATAAGGTTTAA

Protein Sequence: >RC218501 protein sequence
 Red=Cloning site Green=Tags(s)

MVRPYPLIYFLFLPLGACFLLDRREPTDAMGGLGAGERWADLAMGPRPHSVWSSRWLRASQPQALLVI
 ARGLQTSREHAGCRFRFRQDEGSEATGFLPAAGEKTSGPLGNLAEELNGYSRKKGGFSFRFRGR

TRTRPLEQKLISEEDLAANDILDYKDDDDKV

Chromatograms: https://cdn.origene.com/chromatograms/mk6722_f05.zip

Restriction Sites: SgfI-MluI



[View online »](#)

Cloning Scheme:


ACCN: NM_198180

ORF Size: 408 bp

OTI Disclaimer: The molecular sequence of this clone aligns with the gene accession number as a point of reference only. However, individual transcript sequences of the same gene can differ through naturally occurring variations (e.g. polymorphisms), each with its own valid existence. This clone is substantially in agreement with the reference, but a complete review of all prevailing variants is recommended prior to use. [More info](#)

OTI Annotation: This clone was engineered to express the complete ORF with an expression tag. Expression varies depending on the nature of the gene.

Components: The ORF clone is ion-exchange column purified and shipped in a 2D barcoded Matrix tube containing 10ug of transfection-ready, dried plasmid DNA (reconstitute with 100 ul of water).

- Reconstitution Method:**
1. Centrifuge at 5,000xg for 5min.
 2. Carefully open the tube and add 100ul of sterile water to dissolve the DNA.
 3. Close the tube and incubate for 10 minutes at room temperature.
 4. Briefly vortex the tube and then do a quick spin (less than 5000xg) to concentrate the liquid at the bottom.
 5. Store the suspended plasmid at -20°C. The DNA is stable for at least one year from date of shipping when stored at -20°C.

RefSeq: [NM_198180.3](#)

RefSeq Size: 411 bp

RefSeq ORF: 411 bp

Locus ID: 347148

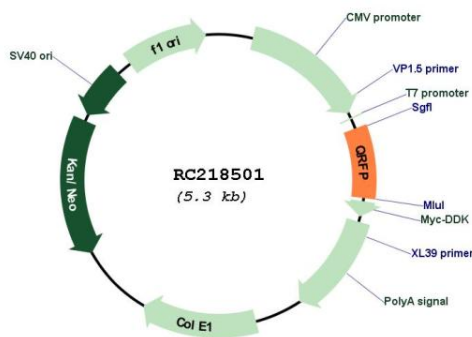
UniProt ID: [P83859](#)

Cytogenetics: 9q34.12

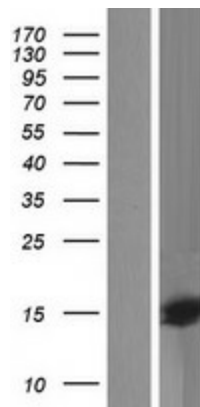
MW: 14.9 kDa

Gene Summary: This gene encodes a preproprotein that is proteolytically processed to generate multiple protein products. The encoded products are members of the RFamide family of neuropeptides, characterized by their common protein C-terminus consisting of an arginine (R) and an amidated phenylalanine (F). These products include the neuropeptides 26RFa and the N-terminally extended form, 43RFa. Both of these neuropeptides bind to the pyroglutamylated RFamide peptide receptor (QRFP) and may regulate blood pressure, reproduction and food intake in rodents. [provided by RefSeq, Jul 2015]

Product images:



Circular map for RC218501



Western blot validation of overexpression lysate (Cat# [LY404880]) using anti-DDK antibody (Cat# [TA50011-100]). Left: Cell lysates from untransfected HEK293T cells; Right: Cell lysates from HEK293T cells transfected with RC218501 using transfection reagent MegaTran 2.0 (Cat# [TT210002]).