

Product datasheet for **RC218498**

Syntabulin (SYBU) (NM_001099756) Human Tagged ORF Clone

Product data:

Product Type:	Expression Plasmids
Product Name:	Syntabulin (SYBU) (NM_001099756) Human Tagged ORF Clone
Tag:	Myc-DDK
Symbol:	Syntabulin
Synonyms:	GOLSYN; OCSYN; SNPHL
Mammalian Cell Selection:	Neomycin
Vector:	pCMV6-Entry (PS100001)
E. coli Selection:	Kanamycin (25 ug/mL)



[View online »](#)

ORF Nucleotide
Sequence:

>RC218498 representing NM_001099756
Red=Cloning site Blue=ORF Green=Tags(s)

TTTTGTAATACGACTCACTATAGGGCGGCCGGAATTCGTCGACTGGATCCGGTACCGAGGAGATCTGCC
GCCCGCATCGCC

ATGTCCAATTTGAGAAGGAGCAGAGTGCAGCATCATGACAAGGAGATTTCTCGAAGCCGAATCCCC
GGTTGATTCTTCGGCCCATATGCCCAACAACAGCACAAAGTGTCCCCAGCCTCTGAGTCTCCTTTCTC
TGAGGAAGAGAGCAGAGAGTTCAACCCAGCAGCTCTGGGCGCTCAGCGAGGACCGTTAGCAGCAACAGC
TTCTGCTCAGATGACACAGGCTGTCTAGCAGCCAGTCACTGTCTCTGTGAAGACACCCTCAGATGCTG
GAAACAGCCCCATTGGCTTTTGCCTGGAAGTGTGAAGGCTTACCAGAAAGAAATGCACGATTGGAAT
GGTTGGTGAAGGAAGCATTCACTCCTCTCGATATAAGAAGGAATCAAAGTCAGGCCTTGTAAACCAGGT
AGTGAAGTGAATTTAGTCTCTGAGCAGCACAGGCAGCATTCCGCTCTGAGGTCCATATGTCGACTG
CGGAAGCAAGCGGTCTTCTTTCACGCAATCGAGGTCTCATGGGCGGAGTAATGGAGCTTCGCACA
CAAGCCTGGCAGCAGCCATCATCCCCGGGAAAAGGACCTTCTGTCCATGCTGTGCAGGAATCAGCTG
AGCCCTGTCAATATCCATCCCAGTTATGCACCTTCTTCCCAAGCAGTAGCAACTCAGGCTCTACAAAG
GAAGCGACTGTAGCCCCATCATGAGCGTCTGGAAGGTACATGTCTTGGGTGAAAATCATGGTGTGAG
ACCCCAAACCCAGAGCAGTATTTGACTCCACTGCAGCAGAAAGAGGTGACAGTGAGACACCTCAAACCC
AAGCTGAAGGAATCTGAGCGCCGACTCCATGAAAGGGAAAGTAAATCGTGGAGCTTAAAGTCCCAGCTGG
CCCGCATGCGAGAGGACTGGATTGAGGAGGAGTGTACCGGGTAGAGGCCAGTTGGCACTCAAAGAAGC
CAGGAAAGAGATTAACAGCTCAAACAGGTCATCGAAACCATGCGGAGCAGCTTGGCTGATAAAGATAAA
GGCATTGAGAAATATTTGTGGACATAAACATCCAAAACAAGAAGCTGGAGTCTCTCCTCAGAGCATGG
AGATGGCACACAGTGGCTCTCTGAGGGACGAACGTGCCTAGACTTCCATGTGATTTCCAGAGAAGAG
CTTAACCCCTCAACCCCTCTTGACACAATGGCAGATGGGTTATCTCTGGAAGAGCAGGTACAGGGGAA
GGGCTGACAGGGAGCTACTGGTAGGAGATAGCATAGCCAACAGCACAGATTTGTTGATGAGATAGTGA
CAGCCACCACCAGAAATCTGGTACCTGGAGCTTGTGCATTCCACCCCTGGGGTAAAGTCTGGAGCT
GCTGCCCATAGTCATGGGTGAGGAGGGCAGTGTGGTGGTGGAGCGAGCCGTTAGACCCGACGTGGTG
CCCTACAGCCAGCCATCTCAGAGCTCATTAGAGTGTGCTGCAGAAGCTCCAGGACCCCTGTCCCTCGA
GCTTGGCGTCCCCTGATGAGTCTGAACCAGACTCGATGGAGAGCTTCCAGAGTCCCTCTGCCTTAGT
GGTTGATTTAACTCCAAGAAATCAAACCTCAGCCATCCTTTTGTCTCCCCTGGAGACCCCTACGCCAAT
GTGGATGCAGAAGTTCATGCAAACCGCCTCATGAGAGAGCTGGATTTTGCAGCCTGCGTGAAGAGAGGT
TGGATGGTGTATCCCACTGGCTCGCGGGGGCGTCTGAGGCAGTACTGGAGCAGCAGCTTCTGGTGGG
TCTCCTGGCTGTGGCTGCCCCGTGGTCCCCACGGTCTGTGGGCATTAGTACTCAGAGAGGGGAAAGC
GATCCTGTGATAACATCGGGGCTTGGCTCAGGGGCTGTTGCGTGGTTCCTGCATTGCTCCGCCGCA
CCGCTTCCGTATCAAACCC

ACGCGTACGCGGCCGCTCGAGCAGAACTCATCTCAGAAGAGGATCTGGCAGCAATGATATCCTGGATT
ACAAGGATGACGACGATAAGGTTTAA

Protein Sequence: >RC218498 representing NM_001099756
Red=Cloning site Green=Tags(s)

```

MSNFEKEHRVQHHDKEISRSRIPRLILRPHMPQQQHKVSPASESPFSEESREFNPSSSGRSARTVSSNS
FCSDDTGCPSSQSVSPVKTPSDAGNSPIGF CPGSDEGFTRKKCTIGMVGEGSIQSSRYKKEKSKGLVKPG
SEADFSSSSSTGSI SAPEVHMSTAGSKRSSSRNRGPHGRSNGASSHKPGSSPSSPREKDLLSMLCRNQL
SPVNIHPSYAPSSPSSNSGSYKGSDCSPIMRRSGRYMSCGENHGVRPPNPEQYL TPLQQKEVTVRHLKT
KLKESERRLHERESEI VELKSQLARMREDWIEEECHRVEAQLALKEARKEIKQLKQVIETMRSSLADKDK
GIQKYFVDINI QNKLESL LQSMEMAHSGSLRDELCLDFPCDSPEKSLTLNPPLDTMADGLSLEEQVTGE
GADRELLVGDSIANSTDLFDEIVTATTTESGDLELVHSTPGANVLELLPIVMGQEEGSSVVERAVQTDVV
PYSPAISELIQSVLQKLQDPCPSSLASPDESEPDMSMFPELSALVVDLTPRNPNSAILLSPVETPYAN
VDAEVHANRLMRELDFAACVEERLDGVIPLARGGVVRQYWSSFLVDLLAVAAPVVPTVLWAFSTQRGGT
DPVYINIGALLRGCCVVALHSLRRTAFRIKT
    
```

TRTRPLEQKLISEEDLAANDILDYKDDDDKV

Chromatograms: https://cdn.origene.com/chromatograms/mk8071_h05.zip

Restriction Sites: SgfI-MluI

Cloning Scheme:



ACCN: NM_001099756

ORF Size: 1980 bp

OTI Disclaimer: The molecular sequence of this clone aligns with the gene accession number as a point of reference only. However, individual transcript sequences of the same gene can differ through naturally occurring variations (e.g. polymorphisms), each with its own valid existence. This clone is substantially in agreement with the reference, but a complete review of all prevailing variants is recommended prior to use. [More info](#)

OTI Annotation: This clone was engineered to express the complete ORF with an expression tag. Expression varies depending on the nature of the gene.

Components: The ORF clone is ion-exchange column purified and shipped in a 2D barcoded Matrix tube containing 10ug of transfection-ready, dried plasmid DNA (reconstitute with 100 ul of water).

Reconstitution Method:

1. Centrifuge at 5,000xg for 5min.
2. Carefully open the tube and add 100ul of sterile water to dissolve the DNA.
3. Close the tube and incubate for 10 minutes at room temperature.
4. Briefly vortex the tube and then do a quick spin (less than 5000xg) to concentrate the liquid at the bottom.
5. Store the suspended plasmid at -20°C. The DNA is stable for at least one year from date of shipping when stored at -20°C.

RefSeq: [NM_001099756.1](#), [NP_001093226.1](#)

RefSeq Size: 2969 bp

RefSeq ORF: 1983 bp

Locus ID: 55638

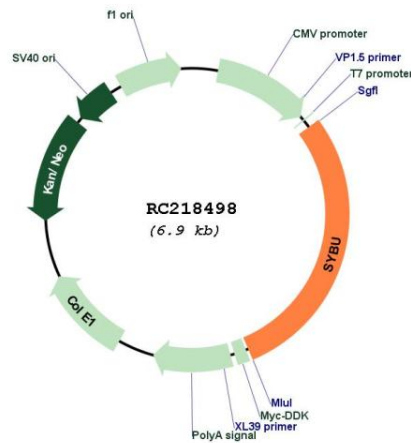
UniProt ID: [Q9NX95](#)

Cytogenetics: 8q23.2

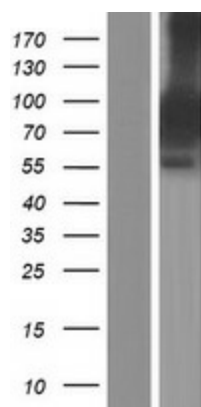
MW: 71.9 kDa

Gene Summary: Syntabulin/GOLSYN is part of a kinesin motor-adaptor complex that is critical for the anterograde axonal transport of active zone components and contributes to activity-dependent presynaptic assembly during neuronal development (Cai et al., 2007 [PubMed 17611281]).[supplied by OMIM, Mar 2008]

Product images:



Circular map for RC218498



Western blot validation of overexpression lysate (Cat# [LY420524]) using anti-DDK antibody (Cat# [TA50011-100]). Left: Cell lysates from untransfected HEK293T cells; Right: Cell lysates from HEK293T cells transfected with RC218498 using transfection reagent MegaTran 2.0 (Cat# [TT210002]).