

Product datasheet for RC218493

TOR2A (NM_130459) Human Tagged ORF Clone

Product data:

Product Type:	Expression Plasmids
Product Name:	TOR2A (NM_130459) Human Tagged ORF Clone
Tag:	Myc-DDK
Symbol:	TOR2A
Synonyms:	TORP1
Mammalian Cell Selection:	Neomycin
Vector:	pCMV6-Entry (PS100001)
E. coli Selection:	Kanamycin (25 ug/mL)
ORF Nucleotide Sequence:	>RC218493 representing NM_130459 Red=Cloning site Blue=ORF Green=Tags(s)

TTTTGTAATACGACTCACTATAGGGCGGCCGGAATTCGTCGACTGGATCCGGTACCGAGGAGATCTGCCGCC**CGGATCGCC**

ATGGCGGCTGCGACGCGCGGCTGCCGGCCCTGGGGCTCGCTCCTCGGGCTGCTCGGGCTGGTCTCGGCCGCGGCCGCGCCTGGGACCTGGCTTCCCTGCGCTGCACCTGGGCGCCTTTTGGCAATGCGACTTCCGGCCGACTTGGCGGGTCTGGAGTGTGACCTGGCTCAGCACCTGGCCGGCCAGCATCTGGCCAAGGCGCTGGTGTGAAGGCGCTGAAGGCCTTTGTGCGGGACCCAGCCCCACCAAGCCGCTGGTCTCCTGCACGGCTGGACCGCACCGCAAATCCTATGTCAGCTCCCTGCTGGCGCACTACCTTCCAGGGCGGCTCCGCAGCCCCCGGTGCACCACTTTCTCCCGTCTCCACTTCCCCACCCAGCCACATCGAGCGCTACAAGAAGGATCTGAAGAGCTGGGTCCAAGGGAACCTCACTGCCTGTGGCCGCTCCCTCTTCCGATGAGATGGACAAGATGCCCCAGGCCTGATGGAAGTCTGCGGCCTTTCTGGGCTCCTCCTGGGTGGTATACGGGACCAATTACCGCAAAGCCATCTTCACTTTCATCAGGTGGGGCCCGCTTTCAGTGGGCACAGTGGGGGGCCACTTCTCAGAGGTTAGCTCTACAGCCTTAGCCTGTGCTCCCAGCAGAATCCAGTTCCCATGGGCTTAGCTGGGCTTTCCAGTGCCCTCCGCCACTCTCAGAGATGACATTGTCATTCCGCCTGGT

ACGCGTACGCGGCCGCTCGAGCAGAACTCATCTCAGAAGAGGATCTGGCAGCAAATGATATCCTGGATTACAAGGATGACGACGATAAGGTTTAA



[View online »](#)

Protein Sequence: >RC218493 representing NM_130459
Red=Cloning site Green=Tags(s)

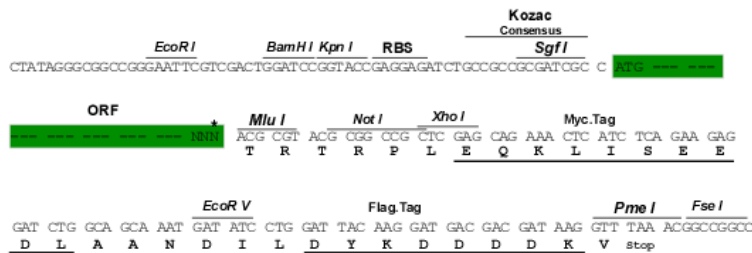
MAAATRGCRPWGSLGLGLVSAAAAWDLASLRCTLGAFCECFRDLPGLECDLAQHLAQHLAKALV
 VKALKAFVRDPAPTKPLVLSLHGWTGTGKSYVSSLLAHYLFQGLRSPRVHHFSPVLHFPHPSHIERYKK
 DLKSWVQGNLTACGRSLFLFDEMCKMPPGLMEVLRPFLGSSWVVYGTNYRKAIFIFIRWGPALQWAQWGG
 HFSEVQLYSLSLCSQNPVPHGLSWAFPVPSATLRDDIVIPPG

TRTRPLEQKLISEEDLAANDILDYKDDDDKV

Restriction Sites: SgfI-MluI

Cloning Scheme:

Cloning sites used for ORF Shuttling:



* The last codon before the Stop codon of the ORF

ACCN: NM_130459

ORF Size: 759 bp

OTI Disclaimer: The molecular sequence of this clone aligns with the gene accession number as a point of reference only. However, individual transcript sequences of the same gene can differ through naturally occurring variations (e.g. polymorphisms), each with its own valid existence. This clone is substantially in agreement with the reference, but a complete review of all prevailing variants is recommended prior to use. [More info](#)

OTI Annotation: This clone was engineered to express the complete ORF with an expression tag. Expression varies depending on the nature of the gene.

Components: The ORF clone is ion-exchange column purified and shipped in a 2D barcoded Matrix tube containing 10ug of transfection-ready, dried plasmid DNA (reconstitute with 100 ul of water).

Reconstitution Method:

1. Centrifuge at 5,000xg for 5min.
2. Carefully open the tube and add 100ul of sterile water to dissolve the DNA.
3. Close the tube and incubate for 10 minutes at room temperature.
4. Briefly vortex the tube and then do a quick spin (less than 5000xg) to concentrate the liquid at the bottom.
5. Store the suspended plasmid at -20°C. The DNA is stable for at least one year from date of shipping when stored at -20°C.

RefSeq: [NM_130459.4](#)

RefSeq Size: 2566 bp

RefSeq ORF: 762 bp

Locus ID: 27433

UniProt ID: [Q5JU69](#)

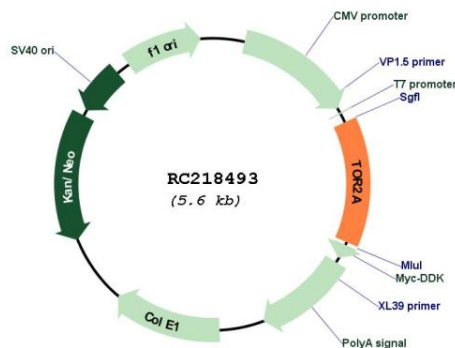
Cytogenetics: 9q34.11

Protein Families: Secreted Protein, Transmembrane

MW: 27.9 kDa

Gene Summary: This gene encodes a member of the AAA family of adenosine triphosphatases with similarity to Clp proteases and heat shock proteins. Alternative splicing at this locus results in the translation of multiple isoforms of the encoded protein, some of which contain salusin peptides in the C-terminal region. These peptides may play roles in hypotension, myocardial growth and the induction of mitogenesis, and may also be involved in the pathogenesis of atherosclerosis. The antimicrobial peptide salusin-beta has antibacterial activity. [provided by RefSeq, Nov 2014]

Product images:



Circular map for RC218493