

Product datasheet for RC218490

CD1C (NM_001765) Human Tagged ORF Clone

Product data:

Product Type:	Expression Plasmids
Product Name:	CD1C (NM_001765) Human Tagged ORF Clone
Tag:	Myc-DDK
Symbol:	CD1C
Synonyms:	BDCA1; CD1; CD1A; R7
Mammalian Cell Selection:	Neomycin
Vector:	pCMV6-Entry (PS100001)
E. coli Selection:	Kanamycin (25 ug/mL)
ORF Nucleotide Sequence:	>RC218490 ORF sequence Red=Cloning site Blue=ORF Green=Tags(s)

TTTTGTAATACGACTCACTATAGGGCGGCCGGAATTCGTCGACTGGATCCGGTACCGAGGAGATCTGCC
GCC**CGATCGCC**

ATGCTGTTTTCTGCAGTTTCTGCTGCTAGCTCTTCTTCTCCAGGTGGTGACAATGCAGACGCATCCCAGG
AACACGCTCCTTCCATGTCATCCAGATCTTCTCATTGTCAACCAATCCTGGGCACGAGGTCAGGGCTC
AGGATGGCTGGACGAGTGCAGACTCATGGCTGGGACAGTGAATCAGGCACAATAATTTCTGCATAAC
TGGTCCAAGGGCAACTTCAGCAATGAAGAGTTGTCAGACCTAGAGTTGTTATTTCTGTTTCTACCTCTTTG
GATTAACCTCGGGAGATTCAGACCATGCAAGTCAAGTACTCGAAATATCCCTTTGAAGTACAGGTGAA
AGCGGGCTGTGAGCTGCATTCTGGAAAGAGCCAGAAAGGCTTCTTTCAGGTAGCTTTCAACGGATTAGAT
TACTGAGTTTCCAGAATACAACATGGGTGCCATCTCCAGGCTGTGGAAGTTTGGCCAAAGTGTCTGTC
ATCTACTCAATCATCAGTATGAAGGCGTCACAGAAACAGTGTATAATCTCATAAGAAGCACTTGCCCCCG
ATTTCTCTTGGGTCTCCTGGATGCAGGGAAGATGTATGTACACAGGCAAGTGAGGCCAGAAAGCCTGGCTG
TCCAGTCGCCCCAGCCTTGGGTCTGGCCAGCTGTTGCTGGTTTGTATGCCTCCGGCTTCTACCCAAAGC
CTGTTTGGGTGACATGGATGCGGAATGAACAGGAGCAACTGGGCACTAAACATGGTGATATTTCTCTAA
TGCTGATGGGACATGGTATCTTCAGGTGATCCTGGAGTGGCATCTGAGGAGCCTGCTGGCCTGTCTTGT
CGAGTGAGACACAGCAGTCTAGGAGGCCAGGACATCATCTACTGGGGACACCACTTTTCCATGAATT
GGATTGCCTTGGTAGTGATAGTCCCTTGGTGATTCTAATAGTCTTGTGTTATGGTTAAGAAGCACTG
CTCATATCAGGACATCCTG

ACGCGTACGCGGCCGCTCGAGCAGAAACTCATCTCAGAAGAGGATCTGGCAGCAATGATATCCTGGATT
ACAAGGATGACGACGATAAGGTTTAA



[View online »](#)

Protein Sequence: >RC218490 protein sequence
Red=Cloning site Green=Tags(s)

MLFLQFLLLALLLPGGDNADASQEHVSFHVIQIFSFVNQSWARGQGGWLDELQTHGWDSSEGTIIFLHN
 WSKGNFSNEELSDLELLFRFYLFGLTREIQDHASQDYSKYPFEVQVKAGCELHSGKSPGFFQVAFNGLD
 LLSFQNTTWVPSPGCGSLAQSVCHLLNHQYEGVTETVYNLIRSTCPRFLLGLLDAGKMYVHRQVRPEAWL
 SSRPSLGSQQLLVCHASGFYPKPVVWVWVRNEQEQLGKTKHGDILPNADGTWYLQVILEVASEEPAGLSC
 RVRHSSLGGQDIILYWGHHF SMNWIALVVIVPLVILIVLVLWFKKHCSYQDIL

TRTRPLEQKLISEEDLAANDILDYKDDDDKV

Chromatograms: https://cdn.origene.com/chromatograms/mk6467_d11.zip

Restriction Sites: SgfI-MluI

Cloning Scheme:



ACCN: NM_001765

ORF Size: 999 bp

OTI Disclaimer: The molecular sequence of this clone aligns with the gene accession number as a point of reference only. However, individual transcript sequences of the same gene can differ through naturally occurring variations (e.g. polymorphisms), each with its own valid existence. This clone is substantially in agreement with the reference, but a complete review of all prevailing variants is recommended prior to use. [More info](#)

OTI Annotation: This clone was engineered to express the complete ORF with an expression tag. Expression varies depending on the nature of the gene.

Components: The ORF clone is ion-exchange column purified and shipped in a 2D barcoded Matrix tube containing 10ug of transfection-ready, dried plasmid DNA (reconstitute with 100 ul of water).

Reconstitution Method:

1. Centrifuge at 5,000xg for 5min.
2. Carefully open the tube and add 100ul of sterile water to dissolve the DNA.
3. Close the tube and incubate for 10 minutes at room temperature.
4. Briefly vortex the tube and then do a quick spin (less than 5000xg) to concentrate the liquid at the bottom.
5. Store the suspended plasmid at -20°C. The DNA is stable for at least one year from date of shipping when stored at -20°C.

RefSeq: [NM_001765.3](#)

RefSeq Size: 2592 bp

RefSeq ORF: 1002 bp

Locus ID: 911

UniProt ID: [P29017](#)

Cytogenetics: 1q23.1

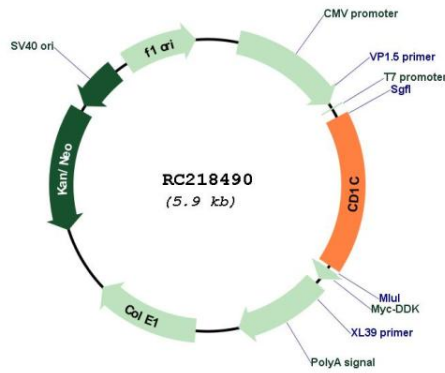
Protein Families: Druggable Genome, Transmembrane

Protein Pathways: Hematopoietic cell lineage

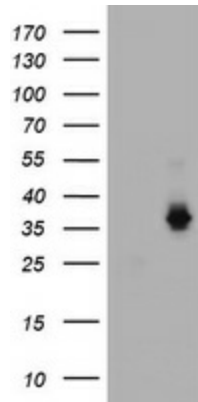
MW: 37.7 kDa

Gene Summary: This gene encodes a member of the CD1 family of transmembrane glycoproteins, which are structurally related to the major histocompatibility complex (MHC) proteins and form heterodimers with beta-2-microglobulin. The CD1 proteins mediate the presentation of primarily lipid and glycolipid antigens of self or microbial origin to T cells. The human genome contains five CD1 family genes organized in a cluster on chromosome 1. The CD1 family members are thought to differ in their cellular localization and specificity for particular lipid ligands. The protein encoded by this gene is broadly distributed throughout the endocytic system via a tyrosine-based motif in the cytoplasmic tail. Alternatively spliced transcript variants of this gene have been observed, but their full-length nature is not known. [provided by RefSeq, Jul 2008]

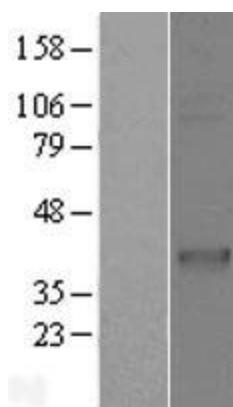
Product images:



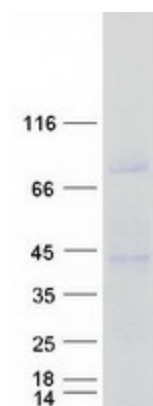
Circular map for RC218490



HEK293T cells were transfected with the pCMV6-ENTRY control (Cat# [PS100001], Left lane) or pCMV6-ENTRY CD1C (Cat# RC218490, Right lane) cDNA for 48 hrs and lysed. Equivalent amounts of cell lysates (5 ug per lane) were separated by SDS-PAGE and immunoblotted with anti-CD1C (Cat# [TA505411]). Positive lysates [LY419762] (100ug) and [LC419762] (20ug) can be purchased separately from OriGene.



Western blot validation of overexpression lysate (Cat# [LY419762]) using anti-DDK antibody (Cat# [TA50011-100]). Left: Cell lysates from untransfected HEK293T cells; Right: Cell lysates from HEK293T cells transfected with RC218490 using transfection reagent MegaTran 2.0 (Cat# [TT210002]).



Coomassie blue staining of purified CD1C protein (Cat# [TP318490]). The protein was produced from HEK293T cells transfected with CD1C cDNA clone (Cat# RC218490) using MegaTran 2.0 (Cat# [TT210002]).