

Product datasheet for **RC218485**

DALRD3 (NM_018114) Human Tagged ORF Clone

Product data:

Product Type:	Expression Plasmids
Product Name:	DALRD3 (NM_018114) Human Tagged ORF Clone
Tag:	Myc-DDK
Symbol:	DALRD3
Synonyms:	EIEE86
Mammalian Cell Selection:	Neomycin
Vector:	pCMV6-Entry (PS100001)
E. coli Selection:	Kanamycin (25 ug/mL)



[View online »](#)

ORF Nucleotide Sequence:

>RC218485 ORF sequence
 Red=Cloning site Blue=ORF Green=Tags(s)

TTTTGTAATACGACTCACTATAGGGCGGCCGGAATTCGTCGACTGGATCCGGTACCGAGGAGATCTGCC
 GCC**GCGATCGCC**

ATGGCGACCAGGCGCCTTGGGGTCGGGGAGACGCTGGGGGCCCTCAACGCGGCCCTGGGGCCAGGCGGTC
 CGGTGTGGATCAAGGAGACGCGCACCCGCCACCTGCGTTCGCCGAGACTTCTGGCACCGCACCGCGCT
 GCAGGCGCGCTTCGATGACGGCCAGGTTCCGGAGCATTGCTCCATGCCCTCGCCTGCCTGCAGGGCCCC
 GGTGTGGCCCCGGTGTGCGCTGCGCGCCGACCCCGCGGGTCTGTCTCTCCAACGCAGCGGTCCGCCG
 TCTTCGAGCGCTCCTCAGCGCCGTGGCCGCTATGCCACGCCCGCCTCGCTGCCTCGCTGGGCCAGCG
 CGTCTTACTACACTGCCAGCACTGCGCAGCTCCCCCTGCGCACTCCGCTTGAGCCAGCTGCGTACGGTG
 CTGTTGGCGATCACCTGGCGGAGCCCTGCGCGCTCACGGGTGTGCGTGCCTAGTGCCAGCTGTGC
 GGGATCCGCACATGCTGACCTTCTGCAGCAACTCCGGGTGACTGGCCCGCTGCCTCGGAGAGAGCTTC
 CCCCCACCCCTGAGGAGCCAGCCCTTGAAGAACTTACCTCTGTAATGACGGGAGGACTGTCCCT
 GGATCCTAGGCAGACTGTGCTGAAGGAGCTGGTGAAGAAGAGGGCCGACAGCTGGCTATGACCCCA
 ACCTGGACAACCTGTCTGGTACTGAGGATCTCCTCTCTGTGCTGGCTGAGCTGCAAGAGGCTCTATGGCA
 TTGGCCCGAGGACAGCCACCCAGGCCTGGCTGGGGCCTCAGATACTGGTACAGGCGGCTGCCTGGTTGTA
 CATGTTGTTAGCTGTGAGGAGGAGTTCAGCAACAGAAGTTGGACCTGCTTTGGCGGAAGTTGGTTGACA
 AGGCTCCACTCAGACAGAAGCACCTCATCTGTGGCCCTGTGAAAGTAGCTGGTGCACCTGGCACTCTGAT
 GACTGCCCTGAGTACTACGAGTCCGGCATACCCAGGTGTGCAAGGCCTCAGCACTGAAGCATGGTGGG
 GATCTGGCACAAGACCCAGCCTGGACAGAGATCTTTGGTGTCTCTCTGTGGCCACCATCAAGTTGAGA
 TGCTGAGCACAGCCCCACAGAGTCACTCTTCCCTGGCTGAGCTGACAGCAGTATCTCCACGAAGGGCAG
 AAAGAGTGGCACCTTTGTCATGTATAATTGTGCCCGTCTTGCCACACTCTTTGAGAGTTACAAGTGTAGT
 ATGGAACAAGGTCTGTACCCCACTTTTCTCTCTGTGAGCAGTCTGGACTTCTCACTGCTACATGATGAGG
 GTGAGTGGTTGTTGCTCTTCAACAGTATCCTCCCTTTCCGGATCTGCTGAGCCGGACAGCAGTGTGGA
 CTGCACAGCCCCGGGCTCCACATTGCTGTACGCACAGAGATGATATGCAAGTTCCTGGTACAGCTCAGC
 ATGGATTTAGCTCCTACTACAACCGGGTACACATCCTGGGGGAGCCTCGACCACACCTCTTTGGTCAGA
 TGTTCTGTCGGCTGCAGCTTCTGAGAGCTGTGCGTGGGTGCTCCATACTGGCTGGCTATGCTGGGTCT
 CCCTCCACTGAGCCACATT

ACGCGTACGCGGCCGCTCGAGCAGAAACTCATCTCAGAAGAGGATCTGGCAGCAAATGATATCCTGGATT
 ACAAGGATGACGACGATAAGGTTTAA

Protein Sequence:

>RC218485 protein sequence
 Red=Cloning site Green=Tags(s)

MATRRRLGVGETL GALNAALGPGGPVWIKETRTRHLRSRDFLAPHRALQARFDDGQVPEHLLHALACLQGP
 GVAPVLRCAPTPAGLSLQLQRSVAVFERVLSAVAAYATPASPASLGQRVLLHCPALRSSPCALRLSQLRTV
 LVADHLARALRAHGVCVRLVPAVRDPHMLTFLQQLRVDWPAASERASSHTLRSHALEELTSANDGRTLSP
 GILGRLCLKELVEEQGRTAGYDPNLDNCLVTEDLLSVLAELQEALWHWPEDSHPGLAGASDTGTGGCLVV
 HVVSCEEEFQQQKLDLLWRKLVKAPLRQKHLICGPVKVAGAPGTLMTAPEYYEFRHTQVCKASALKHGG
 DLAQDPAWTEIFGVL SVATIKFEMLSTAPQSQLFLALADSSI STKGTSGTFVMYNCARLATLFESYKCS
 MEQGLYPTFPPVSSLDL SLLHDEGEWLLL FNSILPFPDLLSRTAVLDCTAPGLHIAVRTEMICKFLVQLS
 MDFSSYNRVHILGEPRPHLFGQMFVRLQLLRVREVLHTGLAMLGLPPLSHI

TRTRPLEQKLI SEEDLAANDILDYKDDDDKV

Chromatograms:

https://cdn.origene.com/chromatograms/mk6379_a05.zip

Restriction Sites:

Sgfl-Mlul

Cloning Scheme:


ACCN: NM_018114

ORF Size: 1632 bp

OTI Disclaimer: The molecular sequence of this clone aligns with the gene accession number as a point of reference only. However, individual transcript sequences of the same gene can differ through naturally occurring variations (e.g. polymorphisms), each with its own valid existence. This clone is substantially in agreement with the reference, but a complete review of all prevailing variants is recommended prior to use. [More info](#)

OTI Annotation: This clone was engineered to express the complete ORF with an expression tag. Expression varies depending on the nature of the gene.

Components: The ORF clone is ion-exchange column purified and shipped in a 2D barcoded Matrix tube containing 10ug of transfection-ready, dried plasmid DNA (reconstitute with 100 ul of water).

Reconstitution Method:

1. Centrifuge at 5,000xg for 5min.
2. Carefully open the tube and add 100ul of sterile water to dissolve the DNA.
3. Close the tube and incubate for 10 minutes at room temperature.
4. Briefly vortex the tube and then do a quick spin (less than 5000xg) to concentrate the liquid at the bottom.
5. Store the suspended plasmid at -20°C. The DNA is stable for at least one year from date of shipping when stored at -20°C.

RefSeq: [NM_018114.3](#), [NM_018114.4](#), [NM_018114.5](#), [NP_060584.3](#)

RefSeq Size: 1816 bp

RefSeq ORF: 1131 bp

Locus ID: 55152

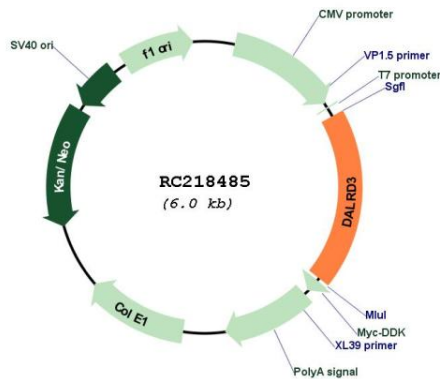
UniProt ID: [Q5D0E6](#)

Cytogenetics: 3p21.31

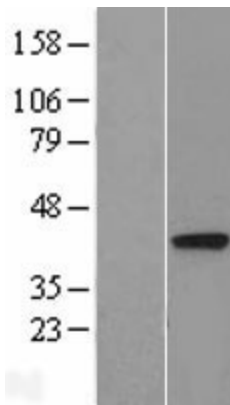
MW: 59.4 kDa

Gene Summary: The exact function of this gene is not known. It encodes a protein with a DALR anticodon binding domain similar to that of class Ia aminoacyl tRNA synthetases. This gene is located in a cluster of genes (with a complex sense-anti-sense genome architecture) on chromosome 3, and contains two micro RNA (miRNA) precursors (mir-425 and mir-191) in one of its introns. Preferential expression of this gene (the miRNAs and other genes in the cluster) in testis suggests a role of this gene in spermatogenesis (PMID:19906709). [provided by RefSeq, Feb 2013]

Product images:



Circular map for RC218485



Western blot validation of overexpression lysate (Cat# [LY413301]) using anti-DDK antibody (Cat# [TA50011-100]). Left: Cell lysates from untransfected HEK293T cells; Right: Cell lysates from HEK293T cells transfected with RC218485 using transfection reagent MegaTran 2.0 (Cat# [TT210002]).