

Product datasheet for **RC218480**

ZWINT (NM_032997) Human Tagged ORF Clone

Product data:

Product Type:	Expression Plasmids
Product Name:	ZWINT (NM_032997) Human Tagged ORF Clone
Tag:	Myc-DDK
Symbol:	ZWINT
Synonyms:	HZwint-1; KNTC2AP; SIP30; ZWINT1
Mammalian Cell Selection:	Neomycin
Vector:	pCMV6-Entry (PS100001)
E. coli Selection:	Kanamycin (25 ug/mL)
ORF Nucleotide Sequence:	>RC218480 ORF sequence Red=Cloning site Blue=ORF Green=Tags(s)

TTTTGTAATACGACTCACTATAGGGCGCCGGGAATTCGTCGACTGGATCCGGTACCGAGGAGATCTGCC
GCC**CGATCGC**C

ATGGAGGCAGCGGAGACAGAGGCCGAAGCTGCAGCCCTAGAGGTCTGGCTGAGGTGGCAGGCATCTTGG
AACCTGTAGGCCCTGCAGGAGGAGGCAGAAGCTGCCAGCCAAGATCCTGGTTGAGTTTGTGGTGGACTCTCA
GAAGAAAGACAAGCTGCTCTGCAGCCAGCTTCAGGTAGCGGATTCCTGCAGAACATCCTGGCTCAGGAG
GACTGCTAAGGGTCTCGACCCCTTGGCTTCTGAAGACAGGAGCCGACAGAAGGCAATTGCAGCTAAGG
ACAATGGAAAGAGCTGAAGGCCACCTACAGGGAGCACGTAGAGGCCATCAAAATTGGCCTACCAAGGC
CCTGACTCAGATGGAGGAAGCCCAGAGGAAACGGACACAACCTCCGGAAGCCTTTGAGCAGCTCCAGGCC
AAGAAACAAATGGCCATGGAGAAACGCAGAGCAGTCCAGAACCAGTGGCAGCTACAACAGGAGAAGCATC
TGCAGCATCTGGCGGAGGTTTCTGCAGAGGTGAGGGAGCGTAAGACAGGGACTCAGCAGGAGCTTACGG
GGTGTTCAGAAACTTGGAAACCTGAAGCAGCAGGCAGAACAGGAGCGGGACAAGCTGCAGAGGTATCAG
ACCTTCTCCAGCTTCTGTATACCCTGCAGGGTAAGCTGTTGTTCCCTGAGGCTGAGGCTGAGGCAGAGA
ATCTTCCAGATGATAAACCCAGCAGCCGACTCGACCCAGGAGCAGAGTACAGGAGACACCATGGGGAG
AGACCTGGTGTGTCCTCAAGGCTGTTGGTCTACAACCTGCTGGAGATGTAATTTGCCA

ACGCGTACGCGGCCGCTCGAGCAGAAACTCATCTCAGAAGAGGATCTGGCAGCAAATGATATCCTGGATT
ACAAGGATGACGACGATAAGGTTTAA



[View online »](#)

Protein Sequence: >RC218480 protein sequence
 Red=Cloning site Green=Tags(s)

```
MEAAETEAAAALEVLAEVAGILEPVGLQEEAELPAKILVEFVVDSSQKDKLLCSQLQVADFLQNILAQE
DTAKGLDPLASEDTSRQKATAAKEQWKELKATYREHVEAIKIGLTKALTQMEEAQRKRTLREAFEQLQA
KKQMAMEKRRRAVQNQWQLQOEKHLQHLAEVSAEVRERKTGTQQLDGVFQKLGNLKQQAQERDKLQRYQ
TFLQLLYTLQGKLLFPEAEAEENLPDDKPPQPTRPQEQTGDTMGRDPGVSFKAVGLQPAGDVNLP
```

TRTRPLEQKLISEEDLAANDILDYKDDDDKV

Chromatograms: https://cdn.origene.com/chromatograms/mk6544_e06.zip

Restriction Sites: SgfI-MluI

Cloning Scheme:

Cloning sites used for ORF Shuttling:



* The last codon before the Stop codon of the ORF

ACCN: NM_032997

ORF Size: 831 bp

OTI Disclaimer: The molecular sequence of this clone aligns with the gene accession number as a point of reference only. However, individual transcript sequences of the same gene can differ through naturally occurring variations (e.g. polymorphisms), each with its own valid existence. This clone is substantially in agreement with the reference, but a complete review of all prevailing variants is recommended prior to use. [More info](#)

OTI Annotation: This clone was engineered to express the complete ORF with an expression tag. Expression varies depending on the nature of the gene.

Components: The ORF clone is ion-exchange column purified and shipped in a 2D barcoded Matrix tube containing 10ug of transfection-ready, dried plasmid DNA (reconstitute with 100 ul of water).

Reconstitution Method:

1. Centrifuge at 5,000xg for 5min.
2. Carefully open the tube and add 100ul of sterile water to dissolve the DNA.
3. Close the tube and incubate for 10 minutes at room temperature.
4. Briefly vortex the tube and then do a quick spin (less than 5000xg) to concentrate the liquid at the bottom.
5. Store the suspended plasmid at -20°C. The DNA is stable for at least one year from date of shipping when stored at -20°C.

RefSeq: [NM_032997.2](#), [NP_127490.1](#)

RefSeq Size: 1878 bp

RefSeq ORF: 834 bp

Locus ID: 11130

UniProt ID: [O95229](#)

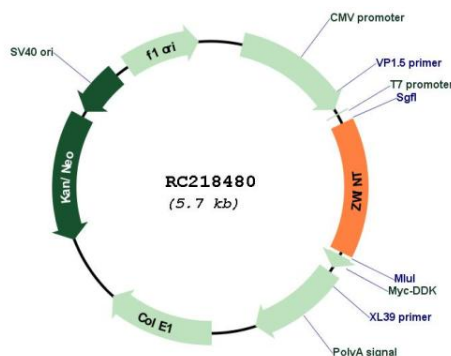
Cytogenetics: 10q21.1

Protein Families: Druggable Genome

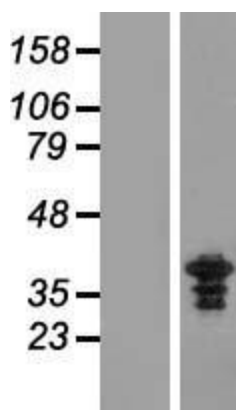
MW: 31.2 kDa

Gene Summary: This gene encodes a protein that is clearly involved in kinetochore function although an exact role is not known. It interacts with ZW10, another kinetochore protein, possibly regulating the association between ZW10 and kinetochores. The encoded protein localizes to prophase kinetochores before ZW10 does and it remains detectable on the kinetochore until late anaphase. It has a uniform distribution in the cytoplasm of interphase cells. Alternatively spliced transcript variants encoding different isoforms have been found for this gene. [provided by RefSeq, Jul 2008]

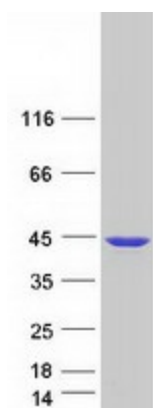
Product images:



Circular map for RC218480



Western blot validation of overexpression lysate (Cat# [LY409797]) using anti-DDK antibody (Cat# [TA50011-100]). Left: Cell lysates from untransfected HEK293T cells; Right: Cell lysates from HEK293T cells transfected with RC218480 using transfection reagent MegaTran 2.0 (Cat# [TT210002]).



Coomassie blue staining of purified ZWINT protein (Cat# [TP318480]). The protein was produced from HEK293T cells transfected with ZWINT cDNA clone (Cat# RC218480) using MegaTran 2.0 (Cat# [TT210002]).