

Product datasheet for RC218473

TEM8 (ANTXR1) (NM_053034) Human Tagged ORF Clone

Product data:

Product Type:	Expression Plasmids
Product Name:	TEM8 (ANTXR1) (NM_053034) Human Tagged ORF Clone
Tag:	Myc-DDK
Symbol:	TEM8
Synonyms:	ATR; GAPO; TEM8
Mammalian Cell Selection:	Neomycin
Vector:	pCMV6-Entry (PS100001)
E. coli Selection:	Kanamycin (25 ug/mL)
ORF Nucleotide Sequence:	>RC218473 representing NM_053034 Red=Cloning site Blue=ORF Green=Tags(s)

TTTTGTAATACGACTCACTATAGGGCGGCCGGAATTCGTCGACTGGATCCGGTACCGAGGAGATCTGCC
GCC**CGATCGCC**

ATGGCCACGGCGGAGCGGAGAGCCCTCGGCATCGGCTTCCAGTGGCTCTCTTTGGCCACTCTGGTGTCTCA
TCTGCGCCGGCAAGGGGACGCAGGGAGGATGGGGTCCAGCCTGTACGGCGGATTTGACCTGTACTT
CATTTTGGACAAATCAGGAAGTGTGCTGCACCACTGGAATGAAATCTATTACTTTGTGGAACAGTTGGCT
CACAAATTCATCAGCCACAGTTGAGAATGTCCTTTATTGTTTTCTCACCCGAGGAACAACCTTAATGA
AACTGACAGAAGACAGAGAACAATCCGTCAAGGCCTAGAAGAACTCCAGAAAGTTCTGCCAGGAGGAGA
CACTTACATGCATGAAGGATTTGAAAGGCCAGTGAGCAGATTTATTATGAAAACAGACAAGGGTACAGG
ACAGCCAGCGTCATCATTGCTTTGACTGATGGAGAACTCCATGAAGATCTCTTTTCTATTTCAGAGAGGG
AGGCTAATAGGTCTCGAGATCTTGGTGCAATTGTTTACTGTGTTGGTGTGAAAGATTTCAATGAGACACA
GCTGGCCCGGATTGCGGACAGTAAGGATCATGTGTTTCCCGTGAATGACGGCTTTCAGGCTCTGCAAGGC
ATCATCCACTCAATTTGAAGAAGTCTGCATCGAAATTTAGCAGCTGAACCATCCACCATATGTGCAG
GAGAGTCAATTTCAAGTTGTCGTGAGAGGAAACGGCTTCCGACATGCCCGCAACGTGGACAGGGTCCCTCTG
CAGCTTCAAGATCAATGACTCGGTCACTCAATGAGAAGCCCTTTTCTGTGGAAGATACTTATTTACTG
TGTCAGCGCCTATCTTAAAAGAAGTTGGCATGAAAGCTGCATCCAGGTCAGCATGAACGATGGCCTCT
CTTTTATCTCCAGTTCTGTCATCATCACCACCACACTGTTCTGACGGTCCATCCTGGCCATCGCCCT
GCTGATCTGTTCTGCTCCTAGCCCTGGCTCTCTCTGGTGGTTCTGGCCCTCTGCTGCACTGTGATT
ATCAAGGAGGTCCTCCACCCCTGCCAGGAGAGTGAGGAAAATAAAATAAAA

ACGCGTACGCGGCCGCTCGAGCAGAACTCATCTCAGAAGAGGATCTGGCAGCAATGATATCCTGGATT
ACAAGGATGACGACGATAAGGTTAA



[View online »](#)

Protein Sequence: >RC218473 representing NM_053034
Red=Cloning site Green=Tags(s)

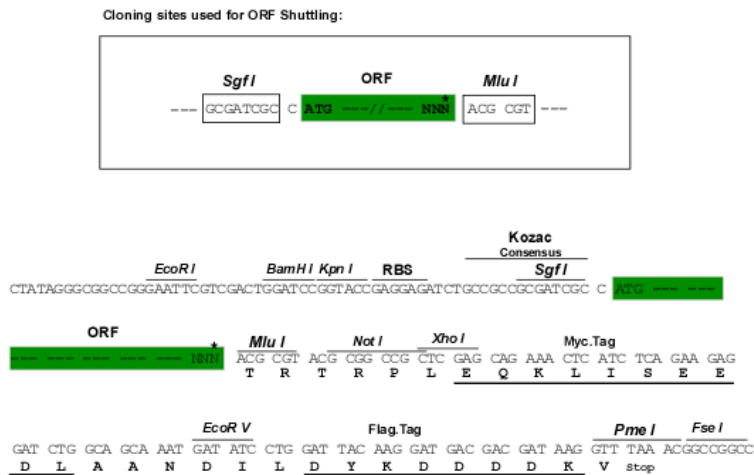
MATAERRALGIGFQWLSLATLVLICAGQGGREDGGPACYGGFDLYFILDKSGSVLHHWNEIYYFVEQLA
 HKFISPQLRMSFIVFSTRGTTLMKLTEDREQIRQGLEELQKVLPGGDTYMHEGFERASEQIYYENRQGYR
 TASVIIALTDGELHEDLFFYSEREANRSRDLGAIYYCVGVKDFNETQLARIADSKDHVFPVNDGFQALQG
 IIHSILKKSCIEILAAEPSTICAGESFQVVVRNGFRHARNVDRVLCFSKINDSVTLNEKPFVSVEDTYLL
 CPAPILKEVGMKAALQVSMNDGLSFISSEVIITTHCSDGSILAIALLILFLLLALALLWWFWPLCCTVI
 IKEVPPPPAAESEEENKIK

TRTRPLEQKLISEEDLAANDILDYKDDDDKV

Chromatograms: https://cdn.origene.com/chromatograms/mk6502_c11.zip

Restriction Sites: SgfI-MluI

Cloning Scheme:



* The last codon before the Stop codon of the ORF

ACCN: NM_053034

ORF Size: 1104 bp

OTI Disclaimer: The molecular sequence of this clone aligns with the gene accession number as a point of reference only. However, individual transcript sequences of the same gene can differ through naturally occurring variations (e.g. polymorphisms), each with its own valid existence. This clone is substantially in agreement with the reference, but a complete review of all prevailing variants is recommended prior to use. [More info](#)

OTI Annotation: This clone was engineered to express the complete ORF with an expression tag. Expression varies depending on the nature of the gene.

Components: The ORF clone is ion-exchange column purified and shipped in a 2D barcoded Matrix tube containing 10ug of transfection-ready, dried plasmid DNA (reconstitute with 100 ul of water).

Reconstitution Method:

1. Centrifuge at 5,000xg for 5min.
2. Carefully open the tube and add 100ul of sterile water to dissolve the DNA.
3. Close the tube and incubate for 10 minutes at room temperature.
4. Briefly vortex the tube and then do a quick spin (less than 5000xg) to concentrate the liquid at the bottom.
5. Store the suspended plasmid at -20°C. The DNA is stable for at least one year from date of shipping when stored at -20°C.

RefSeq: [NM_053034.2](#)

RefSeq Size: 1454 bp

RefSeq ORF: 1107 bp

Locus ID: 84168

UniProt ID: [Q9H6X2](#)

Cytogenetics: 2p13.3

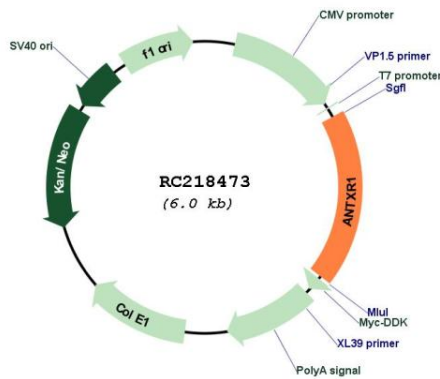
Domains: VWA

Protein Families: Druggable Genome, Transmembrane

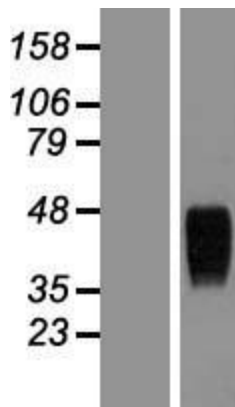
MW: 38.3 kDa

Gene Summary: This gene encodes a type I transmembrane protein and is a tumor-specific endothelial marker that has been implicated in colorectal cancer. The encoded protein has been shown to also be a docking protein or receptor for Bacillus anthracis toxin, the causative agent of the disease, anthrax. The binding of the protective antigen (PA) component, of the tripartite anthrax toxin, to this receptor protein mediates delivery of toxin components to the cytosol of cells. Once inside the cell, the other two components of anthrax toxin, edema factor (EF) and lethal factor (LF) disrupt normal cellular processes. Three alternatively spliced variants that encode different protein isoforms have been described. [provided by RefSeq, Oct 2008]

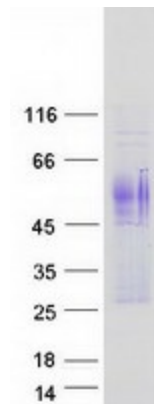
Product images:



Circular map for RC218473



Western blot validation of overexpression lysate (Cat# [LY409333]) using anti-DDK antibody (Cat# [TA50011-100]). Left: Cell lysates from untransfected HEK293T cells; Right: Cell lysates from HEK293T cells transfected with RC218473 using transfection reagent MegaTran 2.0 (Cat# [TT210002]).



Coomassie blue staining of purified ANTXR1 protein (Cat# [TP318473]). The protein was produced from HEK293T cells transfected with ANTXR1 cDNA clone (Cat# RC218473) using MegaTran 2.0 (Cat# [TT210002]).