

Product datasheet for **RC218471**

Munc18 1 (STXBP1) (NM_003165) Human Tagged ORF Clone

Product data:

Product Type:	Expression Plasmids
Product Name:	Munc18 1 (STXBP1) (NM_003165) Human Tagged ORF Clone
Tag:	Myc-DDK
Symbol:	Munc18 1
Synonyms:	DEE4; MUNC18-1; N-Sec1; NSEC1; P67; RBSEC1; unc-18A; UNC18; unc18-1
Mammalian Cell Selection:	Neomycin
Vector:	pCMV6-Entry (PS100001)
E. coli Selection:	Kanamycin (25 ug/mL)



[View online »](#)

ORF Nucleotide Sequence:

>RC218471 representing NM_003165.
 Blue=ORF Red=Cloning site Green=Tag(s)

```
GCTCGTTAGTGAACCGTCAGAATTTTGTAAACGACTCACTATAGGGCGGCCGGGAATTCGTGACTG
GATCCGGTACCGAGGAGATCTGCCGCCCGGATCGCC
ATGGCCCCATTGGCCTCAAAGCTGTTGTCCGAGAGAAGATTATGCATGATGTGATAAAGAAGTCAAG
AAGAAGGGGAATGGAAGGTGCTGGTGGTGGATCAGTTAAGCATGAGGATGCTGTCTCCTGCTGCAAG
ATGACAGACATCATGACCGAGGGCATAACGATTGTGGAAGATATCAATAAGCGCAGAGAGCCGCTCCCC
AGCCTGGAGGCTGTGTATCTCATCACTCCATCCGAGAAGTCCGTCCACTCTCTCATCAGTACTTTAAG
GACCCGCCGACTGCTAAATACCGGGCTGCACACGTCTTCTTCACTGACTCTTGTCCAGATGCCCTGTTT
AATGAACTGGTAAAAATCCCGAGCAGCCAAAGTCATCAAACTCTGACGGAATCAATATTGCATTCTC
CCGTATGAATCCAGGTCTATTCCTTGGACTCTGCTGACTCTTCCAAAGCTTCTACAGTCCCCACAAG
GCTCAGATGAAGAATCCTATACTGGAGCGCTGGCAGAGCAGATCGGACCCTTTGTGCCACCCTGAAG
GAGTACCCGGCTGTGCGGTATCGGGGGAATACAAGACAATGCCCTGCTGGCTCAGCTAATCCAGGAC
AAGCTCGATGCCTATAAAGCTGATGATCCAACAATGGGGGAGGGCCAGACAAAGCAGCTCCCAGCTC
TGATCCTGGATCGAGGCTTTGACCCAGCTCCCTGTGCTCCATGAATTGACTTTTCAGGCTATGAGT
TATGATCTGCTGCCTATCGAAAATGATGTATACAAGTATGAGACCAGCGCATCGGGGAGGCACGGGTG
AAGGAGGTGCTCCTGGACGAGGACGACGACCTGTGGATAGCACTGCGCCACAAGCACATCGCAGAGGTG
TCCCAGGAAGTACCCGGTCTCTGAAAGATTTTCTTCTAGCAAGAGAATGAATACTGGAGAGAAGACC
ACCATGCGGGACCTGTCCAGATGCTGAAGAAGATGCCTCAGTACCAGAAAAGAGCTCAGCAAAGTACTCC
ACCCACCTGCACCTTGTGAGGACTGTATGAAGCATTACCAAGGCACCGTAGACAAACTTGCCGAGTG
GAGCAGGACCTGGCCATGGGCACAGATGCTGAGGGAGAGAAGATCAAGGACCCTATGCGAGCCATCGTC
CCCAATCTGCTGGATGCCAATGTCAGCATTATGACAAAATCCGCATCATCCTTCTACATCTTTTGG
AAGATTGGCATCACGGAGGAAAACCTGAACAAACTGATCCAGCACGCCCCAGATACCCCGGAGGATAGT
GAGATCATCACCAACATGGCTCACCTCGGCGTGCCCATCGTCACCGATTCCACGCTGCGTGCAGGAGC
AAGCCGGAGCGGAAGGAACGCATCAGCGAGCAGACCTACCAGCTCTCACGGTGGACTCCGATTATCAAG
GACATCATGGAGGACACTATTGAGGACAAACTTGACACCAACATTACCCTTATATCTCTACCCGTTC
TCTGCCTCCTCAGCACCCGCGCTCAGCGCCCGCTATGGGCACTGGCATAAGAACAAGCCCCAGGC
GAGTACCCGAGTGGCCCCGCTCATCTTTTTCATCCTTGGGGGTGTGAGCCTGAATGAGATGCGCTGC
GCCTACGAGGTGACCCAGGCCAACGAAAGTGGGAGGTGCTGATAGGTTCTACTCACATTCTACTCCC
ACCAAATTTCTCATGGACCTGAGACACCCCGACTTCAGGGAGTCTCTAGGGTATCTTTGAGGATCAG
GCTCCAACAATGGAG
ACGCGTACGCGGCCGCTCGAGCAGAACTCATCTCAGAAGAGGATCTGGCAGCAAATGATATCCTGGAT
TACAAGGATGACGACGATAAGGTTAAACGGCCGGC
```

Protein Sequence:

>Peptide sequence encoded by RC218471
 Blue=ORF Red=Cloning site Green=Tag(s)

```
MAPIGLKAVVGEKIMHDVIKKVKKKGEWKVLVVDQLSMRMLSSCCKMTDIMTEGITIVEDINKRREPLP
SLEAVYLITPSEKSVHSLISDFKDPPTAKYRAAHVFFTDSCPDLFNLVKSRAAKVIKLTLEINIAFL
PYESQVYSLDSADSFQSFYSPHKAQMKNPILERLAEQIATLCATLKEYPAVRYRGEYKDNALLAQLIQD
KLDAYKADDPMTGEGPDKARSQLLILDRGFDPPSPVLHELTFQAMSVDLLPIENDVYKYETSIGEARV
KEVLLDEDDLWIALRHKHIAEVSQEVTRSLKDFSSSKRMNTGEKTTMRDLSQMLKKMPQYQKELSKYS
THLHLAEDCMKHYQGTVDKLCRVEQDLAMGTDAEGEKIKDPMRAIVPILLDANVSTYDKIRIILLYIFL
KNGITEENLNKLIQHAQIPPEDSEIITNMAHLGVPIVTDSTLRRRSKPERKERISEQTYQLSRWTPIIK
DIMEDTIEDKLDTKHYPYISTRSSASFSTAVSARYGHWKHKAPGEYRSGPRLIIFILGGVSLNEMRC
AYEVTQANGKWEVLIGSTHILTPTKFLMDLRHPDFRESSRVSFEDQAPTME
TRTRPLEQKLISEEDLAANDILDYKDDDDKV
```

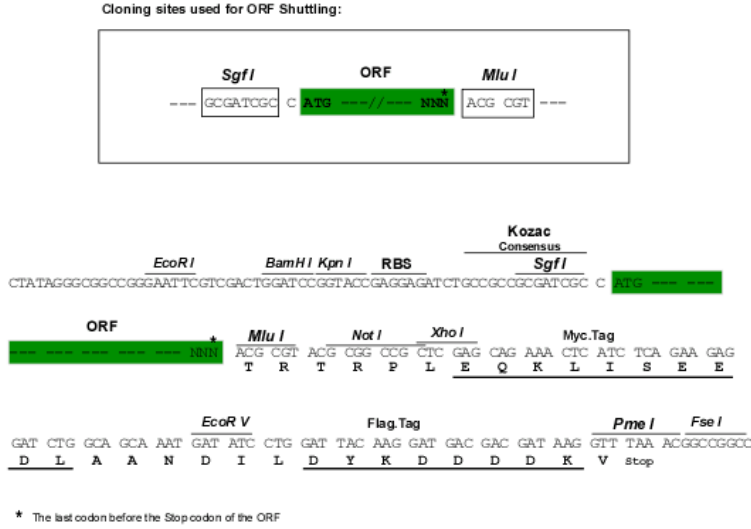
Recombinant protein using RC218471 also available, [TP318471](#)

Chromatograms:

https://cdn.origene.com/chromatograms/mg4212_d04.zip

Restriction Sites: SgfI-MluI

Cloning Scheme:



ACCN: NM_003165

ORF Size: 1809 bp

OTI Disclaimer: Due to the inherent nature of this plasmid, standard methods to replicate additional amounts of DNA in E. coli are highly likely to result in mutations and/or rearrangements. Therefore, OriGene does not guarantee the capability to replicate this plasmid DNA. Additional amounts of DNA can be purchased from OriGene with batch-specific, full-sequence verification at a reduced cost. Please contact our customer care team at custsupport@origene.com or by calling 301.340.3188 option 3 for pricing and delivery.

The molecular sequence of this clone aligns with the gene accession number as a point of reference only. However, individual transcript sequences of the same gene can differ through naturally occurring variations (e.g. polymorphisms), each with its own valid existence. This clone is substantially in agreement with the reference, but a complete review of all prevailing variants is recommended prior to use. [More info](#)

OTI Annotation: This clone was engineered to express the complete ORF with an expression tag. Expression varies depending on the nature of the gene.

Components: The ORF clone is ion-exchange column purified and shipped in a 2D barcoded Matrix tube containing 10ug of transfection-ready, dried plasmid DNA (reconstitute with 100 ul of water).

Reconstitution Method:

1. Centrifuge at 5,000xg for 5min.
2. Carefully open the tube and add 100ul of sterile water to dissolve the DNA.
3. Close the tube and incubate for 10 minutes at room temperature.
4. Briefly vortex the tube and then do a quick spin (less than 5000xg) to concentrate the liquid at the bottom.
5. Store the suspended plasmid at -20°C. The DNA is stable for at least one year from date of shipping when stored at -20°C.

Note: Plasmids are not sterile. For experiments where strict sterility is required, filtration with 0.22um filter is required.

RefSeq Size: 3899 bp

RefSeq ORF: 1812 bp

Locus ID: 6812

UniProt ID: [P61764](#)

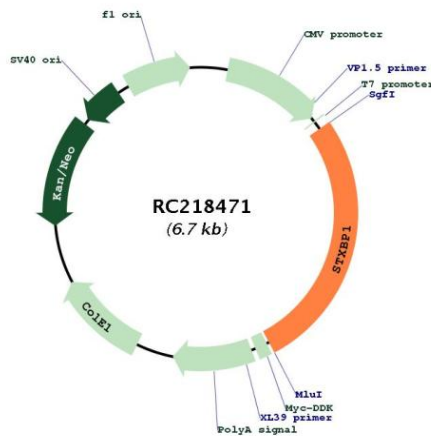
Cytogenetics: 9q34.11

Domains: Sec1

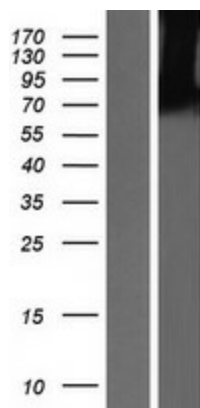
MW: 68.7 kDa

Gene Summary: This gene encodes a syntaxin-binding protein. The encoded protein appears to play a role in release of neurotransmitters via regulation of syntaxin, a transmembrane attachment protein receptor. Mutations in this gene have been associated with infantile epileptic encephalopathy-4. Alternatively spliced transcript variants have been described. [provided by RefSeq, Feb 2010]

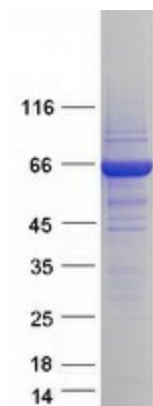
Product images:



Circular map for RC218471



Western blot validation of overexpression lysate (Cat# [LY418854]) using anti-DDK antibody (Cat# [TA50011-100]). Left: Cell lysates from untransfected HEK293T cells; Right: Cell lysates from HEK293T cells transfected with RC218471 using transfection reagent MegaTran 2.0 (Cat# [TT210002]).



Coomassie blue staining of purified STXBP1 protein (Cat# [TP318471]). The protein was produced from HEK293T cells transfected with STXBP1 cDNA clone (Cat# RC218471) using MegaTran 2.0 (Cat# [TT210002]).