

Product datasheet for RC218465

TEX14 (NM_031272) Human Tagged ORF Clone

Product data:

Product Type:	Expression Plasmids
Product Name:	TEX14 (NM_031272) Human Tagged ORF Clone
Tag:	Myc-DDK
Symbol:	TEX14
Synonyms:	CT113; SPGF23
Mammalian Cell Selection:	Neomycin
Vector:	pCMV6-Entry (PS100001)
E. coli Selection:	Kanamycin (25 ug/mL)
ORF Nucleotide Sequence:	>RC218465 representing NM_031272 Red=Cloning site Blue=ORF Green=Tags(s)

TTTTGTAATACGACTCACTATAGGGCGGCCGGAATTCGTCGACTGGATCCGGTACCGAGGAGATCTGCC
GCC**CGATCGCC**

ATGTCCTCGGGCTGTTTCGCTTCCAGTCCCCTGTCTGTTCAACTTGGTACCTTAAGAAATGACTCCCTGG
AAGCTCAGCTTCATGAGTATGTCAAACAAGGGAATATGTGAAAGTGAAGAAAATCTTAAGAAAGGAAT
TTATGTTGATGCAGTAACTCCTTGGGCCAAACAGCACATTTTGTTCGGCGTATTGGGCCTTAGGAAA
TTCGTTGATGTTCTGGTGGATTATGGATCAGATCAAATCACCCTGCTTTGATGGGAGCACCCCTGTCC
ATGCAGCAGCATTTTCGGCAATCAGTGGATCCTTAGCAAATGCTGGATGCAGGAGGTGACCTGCGACT
CCACGATGAGAGGGGTCAAACCCGAAGACTTGGGCTTTGACAGCAGGAAAGGAGCGTAGCACCCAGATA
GTGGAGTTCATGCAGCGCTGTGCCTCACACATGCAGGCCATCATCCAGGGCTTCTTTACGACCTCCTGA
AGAAGATAGACTCCCCGAGCGGCTTGTCTACAGCCCGTCTGGTGTGGGGGCTCGTGCAGGAAACCC
TAATGGCTCTCCTAACCGACTGCTTAAAGCTGGAGTCAATTTCTGCTCAAAATATCTACAGCTTTGGTTTT
GGGAAGTTTTATCTTACTGGGGGACACAGATGGCCTATCTAGGATCTCTCCGGTCATTGGAGAAAAGG
AAGTGATTCAAGCTGATGATGAGCCACCTTCTTTCTCAGCGGCCCTACATGGTCATGACCAACCT
AGTGTGGAATGGGAGCAGGGTACAGTGAAGAGCTGAATCTCCCAACCCACCCACTGCAGCAGGCTG
CGGCTGGCCGACTTGTTAATTGCCGAGCAGGAACACAGCAGCAAGCTGCGGCACCCCTACTTGTACAGT
TGATGGCTGTGTCTCTCCAGGACCTAGAGAAAACCCGCTTGTGTACGAGCGCATCACTATCGGCAC
ATTGTTCAAGTGTCTTCAAGACGAGTCCCAGTCCCAGTGTGCACATGGAGGTGATTGTGCACCTG
CTGCTCCAGATATCTGATGCCCTGAGATACCTGCATTTCCAGGGGTTTATCCACCCTCCCTCAGCTCCT
ATGCTGTCCATATCATCTCCCAAGTGAAGCGAGGCTGACCAACCTGGAGTACATGTTGGAAAGCGAGGA
CAGAGGTGTACAGAGGGACTGACTCGAGTCCCCTTCTACGCAGTATACAAGTGGGCCGACCAGAA
GTGATCTTACAGAAGGCAGCCACAGTGAATCAGACATCTACAGCTTTTCTATGATCATGCAGGAGATTT
TAACAGATGACATACCCTGGAAGGGCTTAGATGGCTCAGTTGTTAAAAAGCCGAGTCTCGGGGAATTA
TTAGAAGCTGATGTCAGGCTTCCGAAACCTTACTATGATATTGTTAAGTCAGGCATCCAGTCAAGCAG



[View online »](#)

AAAGACCGAACTATGAACCTTCAAGATATCCGGTATATTCTGAAGAATGACTTAAAGGATTTACTGGAG
CCCAGAGAACTCAACCAACCGAGAGCCCCAGAGTGCAGAGATACGGACTCCATCCCGATGTCAATGTCTA
TCTAGGACTGACTTCAGAACACCCAGAGAGACACCTGACATGGAATCATAGAATAAAGGAAATGGGC
AGTCAACCTCATTACCAAGGGTTCACTCTTTATCTACTGAGGGGACACTAGATCCTCAGGCCCCAGATC
CATGTCTGATGGCCAGGGAGACTCAGAATCAAGATGCTCCTTGCCTGCTCCATTTATGGCAGAAGAGGC
CAGCAGCCCCAGCACAGTTCAGCAAGCCTCTGCAGTTTCGAAATCAACGAGATCTACTCAGGCTGCTTG
ATTTTGGAAAGATGACATAGAAGAGCCTCCAGGAGCTGCTTCATCTTTGGAGGCAGACGGACCTAACCAGG
TAGATGAACTGAAATCCATGGAAGAAGAGCTGGATAAGATGGAGAGAGAGGCGTGTGTGTTTGGCAGTGA
GGATGAGAGCTCTTCAAAGCTGAGACAGAGTACTCTTTTGATGACTGGGACTGGCAAAACGGTTCACTC
AGTTCACTCAGCCTTCTGAGTCAACCAGAGAAGCCAAGAGCAATTTGAACAACATGTCCACGACTGAGG
AGTATCTCATCAGTAAGTGTGTGCTGGATCTAAAGATTATGCAGACAATAATGCACGAGAATGATGATAG
GCTGAGGAATATCGAGCAGATATTAGATGAAGTCGAGATGAAACAGAAGGAACAGGAAGAGCGCATGTCT
TTATGGGCCACTTCAAGAGAGTTTACAATGCCTACAAGTTACCTCTGGCCGTGGGCCCTCCATCTTTAA
ACTATATCTCTCCTGCTCCTACAGCTTTCAGGGGGT CAGAAGCCAGACACCAGTGGCAACTACCAACCT
ACCAAGATTTCCAAGAATGCTGCCGACTCTTTGTACCCTGGAAAACAGAACACAGATGAACAATTCAG
TGCACTCAAGGAGCCAAGGACAGTTTGGAAACAAGCAGGATCCAAAATACCAAGTACCCAGGGAAGACCTA
GAGAGTCCACTGCCAAAGCCAAGCCACACAGTTTAAATAGTGCACCTTCACTCTGTCAAGCCACCGGCA
GGGACCTTCTGCATCACCCAGCTGTCACTGGGACTCTACCAGGATGAGTGTGGAACCTGTTTCTTCTGAA
ATCTATAATGCAGAGTCCAGAAATAAGATGATGGAAAGGTACACTTAAAATGGAAAATGGAGGTGAAAAG
AAATGGCAAAGAAAGCAGCTACTGGACAGCTCACAGTACCTCCTTGGCATCCTCAGAGTAGTCTGACTTT
AGAGAGCGAGGCTGAAAATGAGCCCGACGCCCTGCTGCAGCCCCCATTAGGAGCCAGAAAACACGGAT
TGGCAGCGAGTTATTGAGTATCATAGGGAAAATGATGAGCCAGAGGAAATGGCAAGTTTGACAAGACGG
GCAACAATGACTGTGACAGTGACCAGCATGGCAGACAGCCAGGCTTGGAAAGTTTACCAGTATCAGGCA
CCATCTCCAGACAAAAGGAGCAACCAGAGCATAGTGAAGCCTTCCAAGCAAGTTCTGACACATTGGTG
GCTGTAGAGAAATCTTACAGTACCTCGAGTCCCATAGAAGAGGACTTTGAAGGAATAACAAGTGCATTTG
CCCAACCTCAAGTCTCTGGTGAGGAAAAGTTCCAATGAGAAAAATCTTGGAAAGAATGCTGAGATTTT
GCCCAGGTCTCAATTTCAACCTGTACGAAGTACTGAAGATGAACAAGAAGAGACATCAAAGGAGTACCA
AAGGAAGTGAAGAGAAAAGACATATCATTGACGGATATCAAGACCTGTCTAGTATCTCCTATGAACCAG
ACAGCTCTTTAAGGAAGCTTCATGCAAAAACCCAAAATAAACCATGCACCTACCAGTGCAGCACTCC
ACTCAGCCAGGGTCCGTTTCTCAGCTGCCAGTCAAGTAAAGACTGCCTTGAAGATATCACATTTAG
GTTAAGACAGAGTTTGCCTCTTGTGGAACAGTCAAGAATTTATCAAACCTTGTCTGATGACTTTATAA
GTGTCGAGAGAGAGCAAGAAACTGGATTCTCTCCTTACTTCTCTGAAACTCCCCCTCAAGACTGAC
TGGTCTTAAAAGATTGTCTTCATTTATTGGGGCTGGATCCCCAGCCTTGTAAAGCATGTGACTCATCA
CCACCCATGCCACCCAGAGAAGGAGCCTGCCTAAAGTAGAAGCCTTCTCACAGCATCACATTGATGAGC
TGCCACCACCATCTCAGGAGCTACTTGATGACATTGAGCTCTTGAACAGCAGCAGGGCTCATCCACGGT
GTTGCATGAGAACACAGCAAGTATGAGGAGGACTGCAAAATGATCAAAGGCACCTAGAAGAACAAGAA
ACTGACAGTAAAAAGAAGATAGTAGTAGTGTCTTTGTCCAAGAAACTGAAGATCTTGGAGAGGACACAG
AGAGAGCTCACTCTACTCTGGATGAGGACCTGGAAAGATGGCTGCAGCCACCTGAGGAGAGCGTGGAGCT
ACAAGACCTTCCAAGGGCTCTGAAAGGGAGACAAATATCAAAGATCAAAAAGTTGGTGAAGAGAAAAGA
AAAAGGGAAAGATAGCATTACACCAGAAAAGAAATCAGAGGGTGTCTAGGGACTTCTGAAGAAGATG
AACTAAAATCCTGTTTTTGAAGCGACTAGGTTGGTCCGAATCATCCAGGATAATCGTGCTGGATCAGAG
TGACTTGTGACAC

ACGCGTACGCGGCCGCTCGAGCAGAACTCATCTCAGAAGAGGATCTGGCAGCAATGATATCCTGGATT
ACAAGGATGACGACGATAAGGTTTAA

Protein Sequence: >RC218465 representing NM_031272
 Red=Cloning site Green=Tags(s)

```
MSRAVRLPVPCPVQLGTLRNDLSLEAQLHEYVKQGNVYKVKKILKKGIYVDAVNSLGQTALFVAALLGLRK
FVDVLVDYGSDPNHRCFDGSTPVHAAAFSGNQWILSKLLDAGDLRLHDERGQNPKTWALTAGKERSTQI
VEFMQRCASHMQAIIQGF SYDLLKKIDSPQRLVYSPSWCGGLVQGNPNPNSPNRLKAGVISAQNIYSFGF
GKFYLTGATQMAYL GSLPVIGEKEVIQADDEPTFSFFSGPYMVTNLVWNGSRVTVKELNLPHPHCSRL
RLADLLIAEQEHSSKLRHPYLLQLMAVCLSQDLEKTRLVYERITIGTLF SVLHERRSQFPVLHMEVIVHL
LLQISDALRYLHFQGF IHRSLSSYAVHII SPGEARL TNLEYMLESERDGVQRDL TRVPLPTQLYNWAAPE
VILQKAATVKSDIYSFSMIMQEIL TDDIPWKGLDGSVVKKAVVSGNYLEADVRLPKPYDVKSGIHVKQ
KDRTMNLQDIRYILKNDLKDF TGAQRTQPTESPRVQRYGLHPDVNVYLG LTSEHPRETPDMEI IELKEMG
SQPHSPRVHSLFTEGTLDPQAPDPCLMARETQNQDAPCPAPFMAEEASSPSTGQPSLCSFEINEIYSGCL
ILEDIEEPPGAASSLEADGPNQVDELKSMEEELDKMEREACCFGSEDESSKAETEYSFDDWDWQNGSL
SSL SLPESTREAKSNLNMSTTEEY LISKCVLDL KIMQT IMHENDRLRNIEQ IILDEVEMKQKEQEERMS
LWATSREFTNAYKLPLAVGPPSLNYIPPV LQLSGGQKPD TSGNYPTL PRFPRMLPTL CDPGKQNTDEQFQ
CTQGAKDSLET SRIQNTSSQGRPRE STAQAKATQFN SALFTLSSHRQGPSASPSCHWDSTRMSVEPV SSE
IYNAESRNKDDGKVHLKWKMEVKEMAKKAATGQL TVPPWHPQSSLTLESEAENEPDALLQPPIRSPENTD
WQRVIEYHRENDEPRNGKFDK TGNND CSDQHGRQ PRLGSFTSIRHPSPRQKEQPEHSEAFQASD TLV
AVEKSYSTSSPI EEDFEGIQGAF AQPQVSGEEKFQMRK ILGKNAEIL PRSQFQPVRSTED EQEETSKE SP
KELKEKDISLTDIQD LSSISYEPDSS FKEASCKTPKINHAPT SVSTPLSPGVS SVAASQYKDCLESITFQ
VKTEFASCWNSQEF IQTLSDDF ISVRERAKKLD SLLTSSETPPSRL TGLKRLSSF IGAGSPSLVKACDSS
PPHATQRRSLPKVEAF SQHHIDELPPPSQEL LDDIELLKQQQGSSTV LHENTASDGGGTANDQRHLEEQE
TDSKKEDSSMLLSKETEDLGEDTERAHSTL DEDLERWLQPPEE SVELQDL PKGSERETNIKDQKV GEEKR
KREDSITPERRKSEGLGTSEEDELKSCFWKRLGWSESSRIIVLDQSDLS D
```

TRTRPLEQKLISEEDLAANDILDYKDDDDKV

Restriction Sites:

SgfI-MluI

Cloning Scheme:

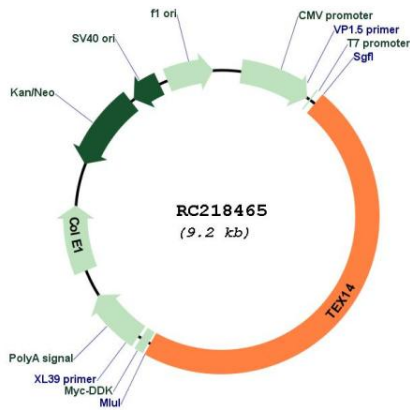


ACCN: NM_031272

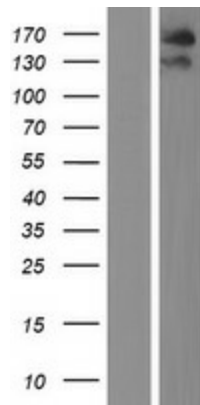
ORF Size: 4353 bp

OTI Disclaimer:	The molecular sequence of this clone aligns with the gene accession number as a point of reference only. However, individual transcript sequences of the same gene can differ through naturally occurring variations (e.g. polymorphisms), each with its own valid existence. This clone is substantially in agreement with the reference, but a complete review of all prevailing variants is recommended prior to use. More info
OTI Annotation:	This clone was engineered to express the complete ORF with an expression tag. Expression varies depending on the nature of the gene.
Components:	The ORF clone is ion-exchange column purified and shipped in a 2D barcoded Matrix tube containing 10ug of transfection-ready, dried plasmid DNA (reconstitute with 100 ul of water).
Reconstitution Method:	<ol style="list-style-type: none">1. Centrifuge at 5,000xg for 5min.2. Carefully open the tube and add 100ul of sterile water to dissolve the DNA.3. Close the tube and incubate for 10 minutes at room temperature.4. Briefly vortex the tube and then do a quick spin (less than 5000xg) to concentrate the liquid at the bottom.5. Store the suspended plasmid at -20°C. The DNA is stable for at least one year from date of shipping when stored at -20°C.
RefSeq:	NM_031272.5
RefSeq Size:	4825 bp
RefSeq ORF:	4356 bp
Locus ID:	56155
UniProt ID:	Q8IWB6
Cytogenetics:	17q22
Protein Families:	Protein Kinase
MW:	162.5 kDa
Gene Summary:	The protein encoded by this gene is necessary for intercellular bridges in germ cells, which are required for spermatogenesis. Three transcript variants encoding different isoforms have been found for this gene.[provided by RefSeq, Jan 2011]

Product images:



Circular map for RC218465



Western blot validation of overexpression lysate (Cat# [LY410609]) using anti-DDK antibody (Cat# [TA50011-100]). Left: Cell lysates from untransfected HEK293T cells; Right: Cell lysates from HEK293T cells transfected with RC218465 using transfection reagent MegaTran 2.0 (Cat# [TT210002]).