

Product datasheet for **RC218464**

CaMKI (CAMK1) (NM_003656) Human Tagged ORF Clone

Product data:

Product Type:	Expression Plasmids
Product Name:	CaMKI (CAMK1) (NM_003656) Human Tagged ORF Clone
Tag:	Myc-DDK
Symbol:	CaMKI
Synonyms:	CAMKI
Mammalian Cell Selection:	Neomycin
Vector:	pCMV6-Entry (PS100001)
E. coli Selection:	Kanamycin (25 ug/mL)
ORF Nucleotide Sequence:	>RC218464 representing NM_003656 Red=Cloning site Blue=ORF Green=Tags(s)

TTTTGTAATACGACTCACTATAGGGCGCCGGGAATTCGTCGACTGGATCCGGTACCGAGGAGATCTGCC
GCC**CGATCGC**C

ATGCTGGGGCAGTGAAGGCCCCAGGTGGAAGCAGGCGGAGGACATTAGAGACATCTACGACTCCGAG
ATGTTCTGGGCACGGGGCCTTCTCGGAGGTGATCCTGGCAGAAGATAAGAGGACGCAGAAGCTGGTGGC
CATCAAATGCATTGCCAAGGAGGCCCTGGAGGGCAAGGAAGGCAGCATGGAGAATGAGATTGCTGCCTG
CACAAGATCAAGCACCCCAACATTGTAGCCCTGGATGACATCTATGAGAGTGGGGCCACCTCTACCTCA
TCATGCAGCTGGTGTGGGTGGGAGCTCTTTGACCGTATTGTGAAAAAGGCTTCTACACGGAGCGGGA
CGCCAGCCGCCTCATCTCCAGGTGCTGGATGCTGTGAAATACCTGCATGACCTGGGCATTGTACACCGG
GATCTCAAGCCAGAGAATCTGCTGTACTACAGCCTGGATGAAGACTCCAAAATCATGATCTCCGACTTTG
GCCTCTCCAAGATGGAGGACCCGGGCAGTGTGCTCTCCACCGCCTGTGGAACCTCCGGGATACGTGGCCCC
TGAAGTCTGGCCAGAAAGCCCTACAGCAAGGCTGTGGATTGCTGGTCCATAGGTGTATCGCCTACATC
TTGCTCTGCGGTTACCCTCCCTTCTATGACGAGAATGATGCCAAACTCTTTGAACAGATTTTGAAGGCCG
AGTACGAGTTTACTCTCCTTACTGGGACGACATCTCTGACTCTGCCAAGATTTTATCCGGCATTGAT
GGAGAAGGACCCAGAGAAAAGATTACCTGTGAGCAGGCCTTGCAGCACCCATGGATTGCAGGAGATACA
GCTCTAGATAAGAATATCCACCAGTCGGTGAGTGAGCAGATCAAGAAGAACTTTGCCAAGAGCAAGTGGA
AGCAAGCCTTCAATGCCACGGCTGTGGTGGCAGCATGAGGAAACTGCAGCTGGGCACCAGCCAGGAGGG
GCAGGGGCAGACGGCAGCCATGGGAGCTGCTGACACCAAGTGGCTGGGGGGCCGGCAGCTGGCTGTTGC
TGTCGAGACTGCTGCGTGGAGCCGGGCACAGAAGTGTCCCCACACTGCCCCACCAGCTC

ACGCGTACGCGGCCGCTCGAGCAGAAACTCATCTCAGAAGAGGATCTGGCAGCAAATGATATCCTGGATT
ACAAGGATGACGACGATAAGGTTAA



[View online »](#)

Reconstitution Method:

1. Centrifuge at 5,000xg for 5min.
2. Carefully open the tube and add 100ul of sterile water to dissolve the DNA.
3. Close the tube and incubate for 10 minutes at room temperature.
4. Briefly vortex the tube and then do a quick spin (less than 5000xg) to concentrate the liquid at the bottom.
5. Store the suspended plasmid at -20°C. The DNA is stable for at least one year from date of shipping when stored at -20°C.

RefSeq: [NM_003656.5](#)

RefSeq Size: 1501 bp

RefSeq ORF: 1113 bp

Locus ID: 8536

UniProt ID: [Q14012](#)

Cytogenetics: 3p25.3

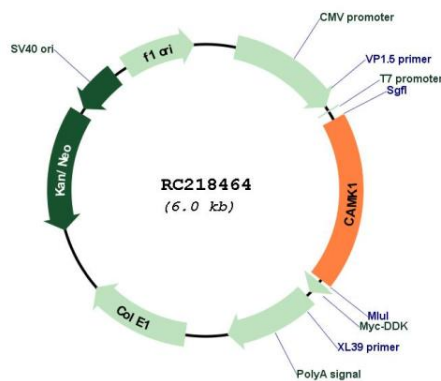
Domains: pkinase, TyrKc, S_TKc

Protein Families: Druggable Genome, Protein Kinase

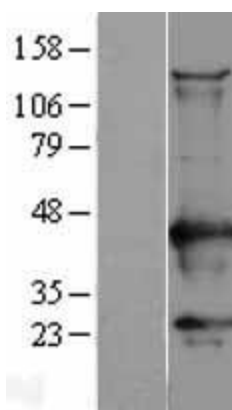
MW: 41.2 kDa

Gene Summary: Calcium/calmodulin-dependent protein kinase I is expressed in many tissues and is a component of a calmodulin-dependent protein kinase cascade. Calcium/calmodulin directly activates calcium/calmodulin-dependent protein kinase I by binding to the enzyme and indirectly promotes the phosphorylation and synergistic activation of the enzyme by calcium/calmodulin-dependent protein kinase I kinase. [provided by RefSeq, Jul 2008]

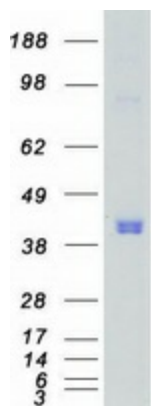
Product images:



Circular map for RC218464



Western blot validation of overexpression lysate (Cat# [LY401210]) using anti-DDK antibody (Cat# [TA50011-100]). Left: Cell lysates from untransfected HEK293T cells; Right: Cell lysates from HEK293T cells transfected with RC218464 using transfection reagent MegaTran 2.0 (Cat# [TT210002]).



Coomassie blue staining of purified CAMK1 protein (Cat# [TP318464]). The protein was produced from HEK293T cells transfected with CAMK1 cDNA clone (Cat# RC218464) using MegaTran 2.0 (Cat# [TT210002]).