

## Product datasheet for **RC218447**

### RELL1 (NM\_001085400) Human Tagged ORF Clone

#### Product data:

Product Type:	Expression Plasmids
Product Name:	RELL1 (NM_001085400) Human Tagged ORF Clone
Tag:	Myc-DDK
Symbol:	RELL1
Mammalian Cell Selection:	Neomycin
Vector:	pCMV6-Entry (PS100001)
E. coli Selection:	Kanamycin (25 ug/mL)
ORF Nucleotide Sequence:	>RC218447 representing NM_001085400 Red=Cloning site Blue=ORF Green=Tags(s)

TTTTGTAATACGACTCACTATAGGGCGGCCGGAATTCGTCGACTGGATCCGGTACCGAGGAGATCTGCC  
GCC**CGATCGCC**

ATGGCTCCGCGGGCACTCCCGGGTCCGCCGCTCTAGCCGCTGTGTCTTCGTGGGAGGCGCCGTGAGTT  
CGCCGCTGGTGGCTCCGGACAATGGGAGCAGCCGCACATTGCACTCCAGAACAGAGACGACCCCGTCGCC  
CAGCAACGATACTGGGAATGGACACCCAGAATATATTGCATACGCGCTTGTCCCTGTGTTCTTTATCATG  
GGTCTCTTTGGCGTCCTCATTGGCCACCTGCTTAAGAAGAAAGGCTATCGTTGTACAACAGAAGCAGAGC  
AAGATATCGAAGAGGAAAAGGTTGAAAAGATAGAATTGAATGACAGTGTGAATGAAAACAGTGACACTGT  
TGGGCAAATCGTCCACTACATCATGAAAAATGAAGCGAATGCTGATGTCTTAAAGGCGATGGTAGCAGAT  
AACAGCCTGTATGATCCTGAAAGCCCCGTGACCCCGCAGCACACCAGGGAGCCCGCAGTGTGCTGCGGC  
CTTTGTACCAGGGGGACGCCAGGGAAGCACGTCTGTGGCCATCATCTGCATACGGTGGCGGTGTTGT  
CGAGAGGGATGTGTGTCATCGGTGTAGGCACAAGCGGTGGCACTTTATAAGCCCACTAACAAGTCCAGA  
GAGAGCAGACCACGGCGCAAGGCGAGGTACGGTCTTTCTGTTGGCAGATTTAGAGTTACAAAAGTGG  
AGCACAAGTCAAACCAGAAGGAACGGAGAAGCCTGATGTCTGTTAGTGGGCTGAAACCGTCAATGGGA  
GGTGCCGGCAACCTGTGAAGAGAGAACGCAGTGGCACAGAG

**ACGCGT**ACGCGGCCGCTCGAGCAGAAACTCATCTCAGAAGAGGATCTGGCAGCAAATGATATCCTGGATT  
ACAAGGATGACGACGATAAGGTTTAA



[View online »](#)

**Protein Sequence:** >RC218447 representing NM\_001085400  
Red=Cloning site Green=Tags(s)

MAPRALPGSAVLAAAVFVGGAVSSPLVAPDNGSSRTLHSRTETTPSPSNDTGNGHPEYIAYALVPVFFIM  
 GLFGVLICHLLKKKGYRCTTEAEQDIEEEKVEKIELNDSVNENS DTVGQIVHYIMKNEANADV LKAMVAD  
 NSLYDPESPVTPSTPGSPVSPGPLSPGGTPGKHVCGHHLHTVGGVVERDVCHRCHRWHFIKPTNKS  
 ESRPRRQGEVTVLSVGRFRVTKVEHKSQKERRSLMSVSGAETVNGEVPATPVKRERSGTE

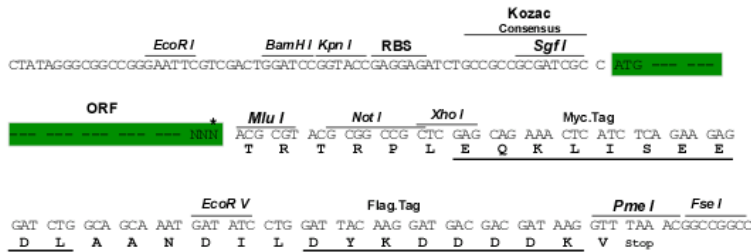
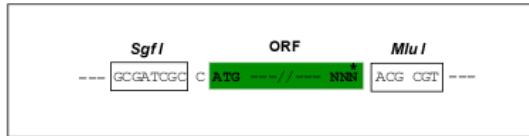
TRTRPLEQKLISEEDLAANDILDYKDDDDKV

**Chromatograms:** [https://cdn.origene.com/chromatograms/mk8005\\_f08.zip](https://cdn.origene.com/chromatograms/mk8005_f08.zip)

**Restriction Sites:** SgfI-MluI

**Cloning Scheme:**

Cloning sites used for ORF Shuttling:



\* The last codon before the Stop codon of the ORF

**ACCN:** NM\_001085400

**ORF Size:** 813 bp

**OTI Disclaimer:** The molecular sequence of this clone aligns with the gene accession number as a point of reference only. However, individual transcript sequences of the same gene can differ through naturally occurring variations (e.g. polymorphisms), each with its own valid existence. This clone is substantially in agreement with the reference, but a complete review of all prevailing variants is recommended prior to use. [More info](#)

**OTI Annotation:** This clone was engineered to express the complete ORF with an expression tag. Expression varies depending on the nature of the gene.

**Components:** The ORF clone is ion-exchange column purified and shipped in a 2D barcoded Matrix tube containing 10ug of transfection-ready, dried plasmid DNA (reconstitute with 100 ul of water).

**Reconstitution Method:**

1. Centrifuge at 5,000xg for 5min.
2. Carefully open the tube and add 100ul of sterile water to dissolve the DNA.
3. Close the tube and incubate for 10 minutes at room temperature.
4. Briefly vortex the tube and then do a quick spin (less than 5000xg) to concentrate the liquid at the bottom.
5. Store the suspended plasmid at -20°C. The DNA is stable for at least one year from date of shipping when stored at -20°C.

**RefSeq:** [NM\\_001085400.2](#)

**RefSeq Size:** 3622 bp

**RefSeq ORF:** 816 bp

**Locus ID:** 768211

**UniProt ID:** [Q8IUW5](#)

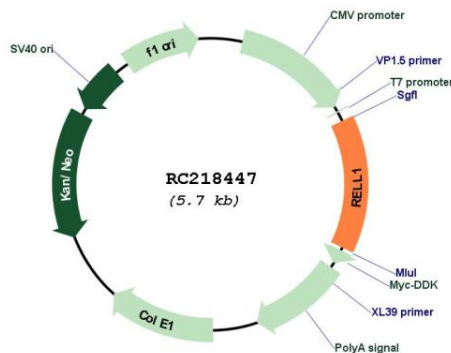
**Cytogenetics:** 4p14

**Protein Families:** Transmembrane

**MW:** 29.2 kDa

**Gene Summary:** Induces activation of MAPK14/p38 cascade, when overexpressed (PubMed:28688764). Induces apoptosis, when overexpressed (PubMed:19969290).[UniProtKB/Swiss-Prot Function]

**Product images:**



Circular map for RC218447