

Product datasheet for **RC218433**

CDKL5 (NM_001037343) Human Tagged ORF Clone

Product data:

Product Type:	Expression Plasmids
Product Name:	CDKL5 (NM_001037343) Human Tagged ORF Clone
Tag:	Myc-DDK
Symbol:	CDKL5
Synonyms:	CFAP247; DEE2; EIEE2; ISSX; STK9
Mammalian Cell Selection:	Neomycin
Vector:	pCMV6-Entry (PS100001)
E. coli Selection:	Kanamycin (25 ug/mL)
ORF Nucleotide Sequence:	>RC218433 representing NM_001037343 Red=Cloning site Blue=ORF Green=Tags(s)

TTTTGTAATACGACTCACTATAGGGCGGCCGGAATTCGTCGACTGGATCCGGTACCGAGGAGATCTGCC
GCC**CGATCGCC**

ATGAAGATTCTAACATTGGTAATGTGATGAATAAATTTGAGATCCTTGGGGTTGTAGGTGAAGGAGCCT
ATGGAGTTGACTTAAATGCAGACACAAGGAAACACATGAAATTTGGCGATCAAGAAATCAAGGACAG
TGAAGAAAATGAAGAAGTCAAAGAAACGACTTTACGAGAGCTTAAATGCTTCGGACTCTCAAGCAGGAA
AACATTGTGGAGTTGAAGGAAGCATTTCGTCGGAGGGGAAAGTTGACTTGGTGTGGATGTTGAA
AAAATATGCTCGAATTGCTGGAAGAAATGCCAAATGGAGTTCACCTGAGAAAGTAAAAAGCTACATCTA
TCAGCTAATCAAGGCTATTCAGTGGTCCATAAGAATGATATTGTCCATCGAGATATAAAACCAGAAAAT
CTCTTAATCAGCCACAATGATGTCTAAACTGTGTGACTTTGGTTTTGCTCGTAATCTGTCAAGGCA
ATAATGCTAATTACAGAGTACGTTGCCACCAGATGGTATCGGTCCCCAGAACTCTTACTTGGCGCTCC
CTATGGAAAGTCCGTGGACATGTGGTCGGTGGGCTGTATTCTTGGGGAGCTTAGCGATGGACAGCCTTTA
TTTCTGGAGAAAGTGAATGACCAACTTTTTACTATTGAGAAGGTGCTAGGACCACTTCCATCTGAGC
AGATGAAGCTTTTCTACAGTAATCCTCGCTTCCATGGGCTCCGGTTTCCAGCTGTTAACCATCCTCAGTC
CTTGGAAAAGATACCTTGAATTTGAATAGTGTCTACTTGCCTAATGAAGAATTTACTGAAGTTG
GACCCAGCTGACAGATACTTGACAGAACAGTGTGTTGAATCACCTACATTTCAAACCCAGAGACTCTGG
ATCGTTCTCCTCAAGGTCAGCAAAAAGAAAACCTTACCATGTGGAAGCAGCAGCATTGTCTAATAGAAA
CCAAGCCGGCAAAAGTACTGCTTTGCACTCACCACAGATCTAACAGCAAGGACATCCAGAACCTGAGT
GTAGGCCCTGCCCGGGCTGACGAAGGTCTCCCTGCCAATGAAAGCTTCTAAATGGAAACCTTGCTGGAG
CTAGTCTTAGTCCACTGCACACCAAAACCTACCAAGCAAGCAGCCAGCCTGGGTCTACCAGCAAAGATCT
CACCAACAACAACATACCACACCTTCTTAGCCAAAAGAAGCCAAGTCAAAAACAGAGTTTGATTTTAAT
ATTGACCCAAAGCCTTCAAGAGGCCAGGGACAAAGTACCTCAAGTCAAACAGCAGATCTCAGCAGAACC
GCCACTCATTGGAAGCTCTCAAAGCAAAGCTGGGACTGCAGCCCAATGAAAAGCAGAGTCGGCA
TAGCTATATTGACACAATCCCCAGTCTCTAGGAGTCCCTCCTACAGGACCAAGCCAAAAGCCATGGG



[View online »](#)

GCACTGAGTGAAGTCTGTGAGCAACCTTTCTGAAGCCAGGGCCAAATTCGCGGAGCCAGTACCA
 GTAGGTAAGTCTCCATCTAGCTGCTTAGACTTGAATTTCTCCACCAGCCCAACCCACCAGACACAGTGA
 CACGAGAACTTTGCTCAGCCCTTCTGGAAGAAATTAACCGAAATGAGGGAAACGCTGGACTCACGTGCAACC
 ACAACCAGACATTCTAAGACGATGGAGGAATTAAGACTGCCGGAGCACATGGACAGTAGCCATCCATT
 CACTGTCTGCACCTCACGAATCTTTTTCTATGGACTGGGCTACACCAGCCCTTTCTTCCAGCAACG
 TCCTCATAGGCATTCTATGTATGTGACCCGTGACAAAGTGAGAGCCAAGGGCTGGATGGAAGCTTGAGC
 ATAGGGCAAGGGATGGCAGCTAGAGCCAACAGCCTGCAACTCTTGTACCCAGCCTGGAGAACAGCTCC
 CTCCAGAGATGACTGTGGCAAGATCTTCGGTCAAAGAGACCTCCAGAGAAGGCACCTCTTCTTCCATAC
 ACGCCAGAAGTCTGAGGGTGGAGTGTATCATGACCCACACTCTGATGATGGCACAGCCCCAAAGAAAAT
 AGACACCTATAACAATGATCCTGTGCCAAGGAGAGTTGGTAGCTTTTACAGAGTGCCATCTCCAGTCCAG
 ACAATTCTTCCATGAAAATAATGTGTCAACTAGAGTTTCTTCTTACCATCAGAGAGCAGTTCTGGAAC
 CAACCACTCAAAAAGACAACCAGCATTGATCCATGGAAAAGTCTGAAAATATTAGTCATTAGAGCAA
 CTCAAGGAAAAAGAGAAGCAAGGATTTTTAGGTCAATGAAAAGAAAAAGAAAATCTCAAACAGTAC
 CCAATTCGACAGCCCTGATCTTCTGACGTTGCAGAAATCCATTATTCTGCTAGCACTCCAAGCAGCAG
 ACCAAAGGAGTGGCGCCCGAGAAGATCTCAGATCTGCAGACCCAAAGCCAGCCATTAATACTACTGCGC
 AAGTTGTTACATCTCTTTCGGCTCAAATCACCCGGCTTCTCAGATCCCGCTTCCAGCCCTAACAG
 CTCAACAAACCAAAAATTCCTTCTCAGAAATTCGGATTACCCCTGAGCCAGGCCTCTGGCGGGAGCAG
 CAACATCCGGCAGGAACCCGACCGAAGGGCAGGCCAGCCCTCCAGTGCAGACGGTGGATGTGATGGC
 AGAAGACAGAGACACCAATTCGGACCCCAAGATAGACGCTTATGTTAAGGACGACAGAACAACAAGGAG
 AATACTTCTGCTGTGGTGACCCAAAGAAGCCTCACACTCCGTGCGTCCAAACCGAGCCCTTATCGTCC
 AATCTCCAGTCTGCTCCCTATCCAGTACTCCAGTCCGAGGCACTTCCATGTGCCGACACTCCAGGTC
 CGAGGCACTGATGCTTTCAGTGCACCAACCCAGCAATCCGGGTTCTTTCTTCTGAGACAGTTATGA
 GGAAGCCCTGATTCACAGGGCCAGGTAACCAAGCTGCGCTCCTGACATACCATGAGAATGCGGCACT
 GACGGGCAAG

ACGCGTACGCGGCCGCTCGAGCAGAACTCATCTCAGAAGAGGATCTGGCAGCAATGATATCCTGGATT
 ACAAGGATGACGACGATAAGGTTTAA

Protein Sequence:

>RC218433 representing NM_001037343
Red=Cloning site Green=Tags(s)

MKIPNIGNVMNKFEILGVVGEYGVVVKCRHKETHEIVAIAIKFKDSEENEEVKETTLRELKMLRTLKQE
 NIVELKEAFRRRGLYLVEYVEKNMLELLEEMPNGVPEKVKSYIYQLIKAIHWCHKNDIVHRDIKPEN
 LLISHNDVLKLCDFGFARNLSEGNANYEYVATRWYRSPPELLLGAPYGKSVDMWSVGCILGELSDGQPL
 FPGESEIDQLFTIQKVLGPLPSEQMKLFYSNPRFHGLRFPVAVNHPQSLERRYLGILNSVLLDLMKNLLKL
 DPADRYL TEQCLNHPTFQTQRLDRSPRSRKRKPYHVESSTLSNRNQAGKSTALQSHHRSNSKDIQNL
 VGLPRADEGLPANESFLNGNLAGASL SPLHTKYQASSQPGSTSKDL TNNNIPHLL SPKEAKSKTEFDN
 IDPKPSEGPGTKYLKSNRSRQNRHSFMESSQSKAGTLQPNKQSRHSYIDTIPQSSRSPSYRTKAKSHG
 ALSDSKSVSNLSEARAQIAEPSTSRYPSSCLDLNSPTSPTRHSDTRTLLSPSGRNNRNEGTLDSRRT
 TTRHKTMEELKLEPHMDSHSHSL SAPHESFSYGLGYTSPFSSQQRPHRHSMYVTRDKVRAKGLDGLS
 IGQGMARANSLQLLSPQPEQLPPEMTVARSSVKETSREGTSSFHTRQKSEGGVYHDPHSDGTAPKEN
 RHLVNDPVPVRRVGSFYRVPSRPDNSFHENNVSTRVSSLPSESSSGTNHRSKRQPAFDPWKPENISHSEQ
 LKEKEKQGFRRSMKMKKKSQTVPNSDSPDLL TLQKSIHASTPSSRPKEWRPEKISDLQTSQPLKSLR
 KLLHLSSASNHPASSDPRFQPLTAQQTNSFSEIRIHPLSQASGGSSNIRQEPAPKGRPALQLPDGGCDG
 RRQRHHSQPDRRFMLRTTEQQGEYFCGDPKPKPHTPCVFNALHRPISSPAPYVQLVQVGTSMCPTLQV
 RGTDAFSCPTQSGSFFVRHVMREAL IHRAQVNQAALLTYHENAALTKG

TRTRPLEQKLISEEDLAANDILDYKDDDDKV

Chromatograms:

https://cdn.origene.com/chromatograms/mk8004_h04.zip

Restriction Sites:

Sgfl-Mlul

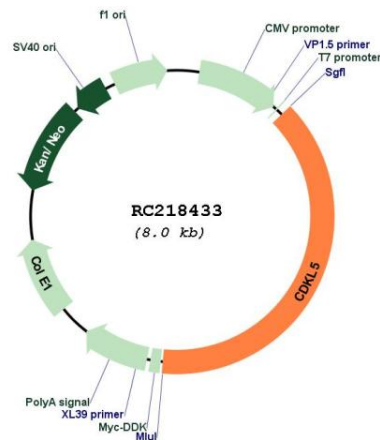
Cytogenetics: Xp22.13

Protein Families: Druggable Genome, Protein Kinase

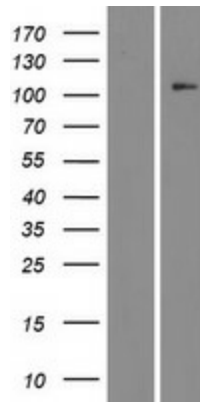
MW: 115.4 kDa

Gene Summary: This gene is a member of Ser/Thr protein kinase family and encodes a phosphorylated protein with protein kinase activity. Mutations in this gene have been associated with X-linked infantile spasm syndrome (ISSX), also known as X-linked West syndrome, and Rett syndrome (RTT). Alternate transcriptional splice variants have been characterized. [provided by RefSeq, Jul 2008]

Product images:



Circular map for RC218433



Western blot validation of overexpression lysate (Cat# [LY421909]) using anti-DDK antibody (Cat# [TA50011-100]). Left: Cell lysates from untransfected HEK293T cells; Right: Cell lysates from HEK293T cells transfected with RC218433 using transfection reagent MegaTran 2.0 (Cat# [TT210002]).