

## Product datasheet for **RC218432**

### RSF1 (NM\_016578) Human Tagged ORF Clone

#### Product data:

Product Type:	Expression Plasmids
Product Name:	RSF1 (NM_016578) Human Tagged ORF Clone
Tag:	Myc-DDK
Symbol:	RSF1
Synonyms:	HBXAP; p325; RSF-1; XAP8
Mammalian Cell Selection:	Neomycin
Vector:	pCMV6-Entry (PS100001)
E. coli Selection:	Kanamycin (25 ug/mL)
ORF Nucleotide Sequence:	>RC218432 representing NM_016578 Red=Cloning site Blue=ORF Green=Tags(s)

TTTTGTAATACGACTCACTATAGGGCGGCCGGAATTCGTCGACTGGATCCGGTACCGAGGAGATCTGCC  
GCC**CGATCGCC**

ATGGCGACGGCGCGGCAGCGCGCGGTGATGGCTCCTCCGGGCTGCCGGGTTCTGCCCCAACTTCG  
CCGTAGTCTGCTCCTTCTGGAGCGCTACGGGCCGCTGCTAGACCTGCCTGAGTTGCCGTTCCCTGAGCT  
GGAGCGGTGCTGCAGGCGCCGCCCGGACGTCGGCAACGGAGAAGTACCAAAGAATTGGTGGAGCTC  
CATTTGAAGCTGATGAGGAAAATTGGCAAATCTGTTACTGCAGACAGATGGGAAAAATTTGATCAAGA  
TATGCCAAGAGTTAACAGTACCTGGGCATGGGAGATGGAGAAGAAGGGCTATCTTGAAATGAGTGTGA  
ATGCAAATAGCACTCTTAAAGTACCTCTGTGAGTGTGAGTTGATGACAATCTCAAATCAAGAATATT  
ATTAATGAGGAGGATGCCGATACTATGCGTCTCCAGCCAATTGGTCGAGACAAAGATGGCCTCATGTACT  
GGTACCAATTGGATCAAGATCACAATGTGAGAATGTACATAGAAGAACAAAGATGATCAAGATGGCTCTTC  
ATGGAAATGCATTGTCAGAAATCGAAACGAGTTGGCTGAGACTCTTGCACTCCTGAAAGCACAAATTGAT  
CCTGTACTATTGAAAACTCTAGCCAACAAGACAACCTTCTCGGGAAAGTCCCAGCTTAGAGGATGAGG  
AGACTAAAAAGAGGAAGAAACACCTAAACAAGAGGAACAGAAAGAAAGTAAAAAGATGAAAAGTGAGGA  
GCAGCCTATGGATTTAGAAAACCGTTCTACAGCCAATGTTCTAGAAGAGACTACTGTGAAAAAGAAAA  
GAAGATGAAAAGAACTTGTGAACTGCCAGTCATAGTGAAGCTAGAAAAACCTTTGCCAGAAAATGAAG  
AAAAAAGATTATCAAAGAAGAAAGTATTCTTCAAGGAAAATGTCAAACCCATTAAAGTTGAGGTGAA  
GGAATGTAGAGCAGATCCTAAAGATACCAAAAGTAGCATGGAGAAGCCAGTGGCACAGGAGCCTGAAAGG  
ATCGAATTTGGTGGCAATATTAATCTTCTCACGAAATTAAGTGAAGAACTACTGAAGAACTGAGAAAC  
TTAAAAATGACCAGCAGGCCAAGATACCACTAAAAAACGAGAAATTAAGTGAAGTATGATTTTGACAG  
TCCAGTCAAGGGACCTTTGTGTAATCAGTTACTCCAACAAAAGAGTTTTTGAAGATGAAATAAAACAA  
GAGGAAGAGACTTGTAAGGATCTCTACAATCACTGCTTTGGGTCATGAAGGAAAACAGCTGGTAAATG  
GAGAAGTTAGTGATGAAAGGGTAGCTCAAATTTAAGACAGAACCAATAGAGACAAAGTTTTATGAGAC  
AAAGGAAGAGAGCTATAGCCCCCTAAGGACAGAAATATCATCACGGAGGAAATGGAACAGAGTCTTA



[View online »](#)

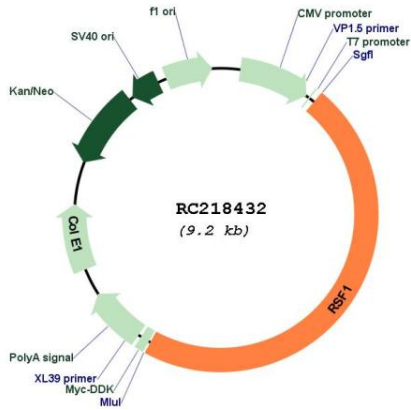
AATTCTGTCATAACAAGTATGAAAAAGGTGAGCTTGAGAAAGAAACAGCCCCTTTGAGGAAAGATGCAG  
ATAGTTCAATATCAGTCTTAGAGATCCATAGTCAAAAAGCACAAATAGAGGAACCCGATCCTCCAGAAAT  
GGAAACTTCTCTTGATTCTTCTGAGATGGCAAAAGATCTCTTCAAAAAGTCTTTATCTTCCACCGAG  
TCGTGTACCATGAAAGGTGAAGAGAAGTCTCCAAAAGTAAAGAAGGATAAGCGCCCAACCTCTAGAAAT  
GTCTTGAAAAGTTAGAGAAGTCCAAAAGACTTTTCTTGATAAGGACGCACAAAGATTGAGTCCAATACC  
AGAAGAAGTTCCAAAGAGTACTCTAGAGTCAGAAAAGCCTGGCTCTCCTGAGGCAGCTGAAAATTCTCCA  
CCATCTAATATCATTGACCACTGTGAGAAAAGTGCCTCAGAAAAGAAAGTGGTAGAATGCCAGAGTACAA  
GTAAGTGTGGTGGCCAGTCTGTGAAAAAGTAGACCTAGAAACCTTAAAAGAGGATTCTGAGTTCACAAA  
GGTAGAAATGGATAATCTGGACAATGCCAGACCTCTGGCATAGAGGAGCCTTCTGAGACAAAGGTTCT  
ATGCAAAAAGCAAATTCAAATATAAGTTGGTCTGAAGAAGAAACCACTGCCTCAGAAAATACAGAGA  
TAACCTCTGAAAGGCAGAAAAGGGCATCAAAATTAACAATCAGGATATCAAGTCGAAAAAGAACCCGA  
TTCTCCCCCAAAGTTCTAGAACCAGAAAACAAGCAAGAGAAGACAGAAAAGGAAGAGGAGAAAACAAT  
GTGGGTCGTACTTAAGAAGATCTCAAGAATATCTAGACCCACTGCAAAAGTGGCTGAGATCAGAGATC  
AGAAAGCTGATAAAAAAGAGGGGAAGGAGAAGATGAGGTGGAAGAAGAGTCAACAGCTTTGCAAAAAC  
TGCAAAAAGGAAATTTGAAAAATCAGAGAAAGATACAAATCTAAAGTAAGCAAGGTAAAACCCAAA  
GGCAAAGTTCGATGGACTGGTTCTCGGACACGTGGCAGATGGAATATTCAGCAATGATGAAAGTGAAG  
GGTCTGGCAGTGA AAAATCATCTGCAGTTCAGAAAGGAGGAAGAAAAGGAAAGTGAAGAGCCATCCT  
AGCAGATGATGATGAACCATGCAAAAATGTGGCCTTCCAAACCATCCTGAGCTAATCTTCTGTGTGAC  
TCTTGGCATAGTGGATACCATACTGCCTGCCTTCGCCCTCCTCTGATGATCATCCAGATGGAGAATGGT  
TCTGCCACCTTGCCAACATAAACTGCTCTGTGAAAAATAGAGGAACAGTTGCAGGATTTGGATGTTGC  
CTTAAAGAAGAAAGAGCGTGCAGAACGAAGAAAAGAACGCTTGGTGTATGTTGGTATCAGTATTGAAAC  
ATCATTCTCCACAAGACCAGACTTTTCTGAAGATCAAGAAGAAAAGAAAAGATTCAAAAAATCCA  
AAGCAAACCTTGCTTGAAAGGAGTCAACAAGAACAAGGAAATGTATAAGCTACAGATTTGATGATTTGA  
TGAAGCAATTGATGAAGCTATTGAAGATGACATCAAGAAGCCGATGGAGGAGGATTGGCCGAGGAAAA  
GATATCTCCACCATCACAGGTATCGTGGGAAAGACATCTCTACTATTTTGGATGAAGAAAGAAAAGAAA  
ATAAACGACCCAGAGGGCAGCTGCTGCTCGAAGGAAGAAACGCCGCGATTAAATGATCTGGACAGTGA  
TAGCAACCTGGATGAAGAAGAGAGCGAGGATGAATCAAGATCAGTATGATGATGATGATGATGATGATG  
GTGTCTGATGAAAACCCAGATGAAAGTGAAGAAGATCCGCCATCTAATGATGACAGTGCAGTACTTTT  
GTAGCCGTAGACTGAGGCGACACCCCTCTCGGCAATGAGGCAGAGCAGGCGTTTGGCAAGAAAGACCC  
AAAGAAAAATATTCGATGATGATGAAGAGGAGGAATCTGAGGAGAATAGTAGACTCTGAAAGTGC  
TTCAGTATGATTTTATGATGATTTTGTAGAACTCGGCGAAGCGGTCAAGGAGAAATCAGAAAAGAC  
AAATTAAC TACAAGAAGACTCAGAAAAGTACGGTTCCAGAAAGATTGCGACGTGGTAAAGAAATAAG  
GCGAGTACACAAGCGAAGACTTTCCAGCTCAGAGAGTGAAGAGAGCTATTTGTCCAAGAACTCTGAAGT  
GATGAGCTAGCTAAAGAATCAAAGCGGTGAGTTCGAAAGCGGGCCGAAGCACAGACGATTCAGAAAG  
CAGATGAGGAGGAGGAGGAAAGAGGAAAGGCAAAACATCCCGCAAACGGCTACACCGGATTGAGACGGATG  
GGAGGAGAGTTGTGACAATGCTCATGGAGATGCAAAATCAGCCTGCCCGTACAGCCAGCCTAGGGTCTG  
CCCTCAGAACAAGAGAGCACCAAGAAGCCCTACCGGATAGAAAGTATGATGAGGAAGAGGACTTTGAAAATG  
TAGGCAAAGTGGGAGCCATTGGACTATAGCTTAGTGGACTTACCTTCAACCAATGGACAGAGCCCTGG  
CAAAGCCATTGAGAACTTGATTGGCAAGCCTACTGAGAAGTCTCAGACCCCAAGGACAACAGCACAGCC  
AGTGCAAGCCTAGCCTCCAATGGGACAAGTGGTGGCAGGAGGAGGAGCACCAGAAGAGGAGGAAGATG  
AGCTTTT GAGAGT GACTGACCTTGTGATTATGTCTGTAAACAGTGAACAGTTA

ACGCGTACGCGGCCGCTCGAGCAGAACTCATCTCAGAAGAGGATCTGGCAGCAATGATATCCTGGATT  
ACAAGGATGACGACGATAAGGTTTAA

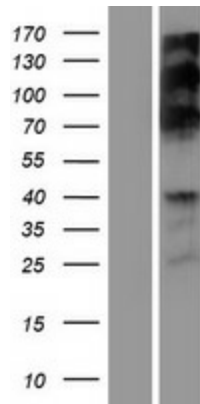


<b>OTI Disclaimer:</b>	The molecular sequence of this clone aligns with the gene accession number as a point of reference only. However, individual transcript sequences of the same gene can differ through naturally occurring variations (e.g. polymorphisms), each with its own valid existence. This clone is substantially in agreement with the reference, but a complete review of all prevailing variants is recommended prior to use. <a href="#">More info</a>
<b>OTI Annotation:</b>	This clone was engineered to express the complete ORF with an expression tag. Expression varies depending on the nature of the gene.
<b>Components:</b>	The ORF clone is ion-exchange column purified and shipped in a 2D barcoded Matrix tube containing 10ug of transfection-ready, dried plasmid DNA (reconstitute with 100 ul of water).
<b>Reconstitution Method:</b>	<ol style="list-style-type: none"><li>1. Centrifuge at 5,000xg for 5min.</li><li>2. Carefully open the tube and add 100ul of sterile water to dissolve the DNA.</li><li>3. Close the tube and incubate for 10 minutes at room temperature.</li><li>4. Briefly vortex the tube and then do a quick spin (less than 5000xg) to concentrate the liquid at the bottom.</li><li>5. Store the suspended plasmid at -20°C. The DNA is stable for at least one year from date of shipping when stored at -20°C.</li></ol>
<b>RefSeq:</b>	<a href="#">NM_016578.3</a> , <a href="#">NP_057662.3</a>
<b>RefSeq Size:</b>	5138 bp
<b>RefSeq ORF:</b>	4326 bp
<b>Locus ID:</b>	51773
<b>UniProt ID:</b>	<a href="#">Q96T23</a>
<b>Cytogenetics:</b>	11q14.1
<b>Domains:</b>	PHD
<b>Protein Families:</b>	Druggable Genome
<b>MW:</b>	163.6 kDa
<b>Gene Summary:</b>	This gene encodes a nuclear protein that interacts with hepatitis B virus X protein (HBX) and facilitates transcription of hepatitis B virus genes by the HBX transcription activator, suggesting a role for this interaction in the virus life cycle. This protein also interacts with SNF2H protein to form the RSF chromatin-remodeling complex, where the SNF2H subunit functions as the nucleosome-dependent ATPase, and this protein as the histone chaperone. [provided by RefSeq, Sep 2011]

Product images:



Circular map for RC218432



Western blot validation of overexpression lysate (Cat# [LY413900]) using anti-DDK antibody (Cat# [TA50011-100]). Left: Cell lysates from untransfected HEK293T cells; Right: Cell lysates from HEK293T cells transfected with RC218432 using transfection reagent MegaTran 2.0 (Cat# [TT210002]).