

Product datasheet for **RC218430**

Regucalcin (RGN) (NM_004683) Human Tagged ORF Clone

Product data:

Product Type:	Expression Plasmids
Product Name:	Regucalcin (RGN) (NM_004683) Human Tagged ORF Clone
Tag:	Myc-DDK
Symbol:	Regucalcin
Synonyms:	GNL; HEL-S-41; RC; SMP30
Mammalian Cell Selection:	Neomycin
Vector:	pCMV6-Entry (PS100001)
E. coli Selection:	Kanamycin (25 ug/mL)
ORF Nucleotide Sequence:	>RC218430 representing NM_004683 Red=Cloning site Blue=ORF Green=Tags(s)

TTTTGTAATACGACTCACTATAGGGCGGCCGGAATTCGTCGACTGGATCCGGTACCGAGGAGATCTGCC
GCC**CGGATCGCC**

ATGTCTTCATTAAGATTGAGTGTGTTTTGCCAGAGAAGTCCGGTGTGGTGAAGTCTCCAGTATGGGAGG
AAGTGCCAACCTCTGCTCTTTGTAGACATTCCTGCAAAAAAGTTTGCCGGTGGGATTCATTACCAA
GCAAGTACAGCGAGTGACCATGGATGCCCCAGTCAGCTCCGTGGCTCTTCGCCAGTCGGGAGGCTATGTT
GCCACCATTGGAACAAAGTTCTGTGCTTTGAACTGGAAAGAACAATCAGCAGTTGTCTTGCCACCGGTGG
ATAACGACAAGAAAAACAATCGCTTCAATGATGGGAAGGTGGATCCCGCCGGGAGGTACTTTGCTGGCAC
CATGGCTGAGGAAACAGCTCCAGCAGTTCTTGAGCGGCACCAGGGGGCCCTGTACTCCCTCTTCCCTGAT
CACCACGTGAAAAAGTACTTTGACCAGGTGGACATTTCCAATGGTTTGGATTGGTTCGCTAGACCACAAAA
TCTTCTATTACATTGACAGCCTGTCTACTCCGTGGATGCCTTTGACTATGACCTGCAGACAGGACAGAT
CTCCAACCGCAGAAGTGTTTACAAGCTAGAAAAGGAAGAACAATCCCAGATGGAATGTGTATTGATGCT
GAGGGGAAGCTCTGGGTGGCCTGTTACAATGGAGGAAGAGTGATTCGTTTAGATCCTGTGACAGGGAAAA
GACTTCAAAGTGAAGTTGCCTGTTGATAAAACAACCTCATGCTGCTTTGGAGGGAAGAATTACTCTGA
AATGTATGTGACCTGCGCCCGGATGGGATGGACCCCGAGGGTCTTTTGGGCAACCTGAAGCTGGTGGA
ATTTTCAAGATAACTGGTCTGGGGTCAAAGGAATTGCTCCCTACTCCTATGCGGGA

ACGCGTACGCGGCCGCTCGAGCAGAAACTCATCTCAGAAGAGGATCTGGCAGCAAATGATATCCTGGATT
ACAAGGATGACGACGATAAGGTTTAA



[View online »](#)

Protein Sequence: >RC218430 representing NM_004683
Red=Cloning site Green=Tags(s)

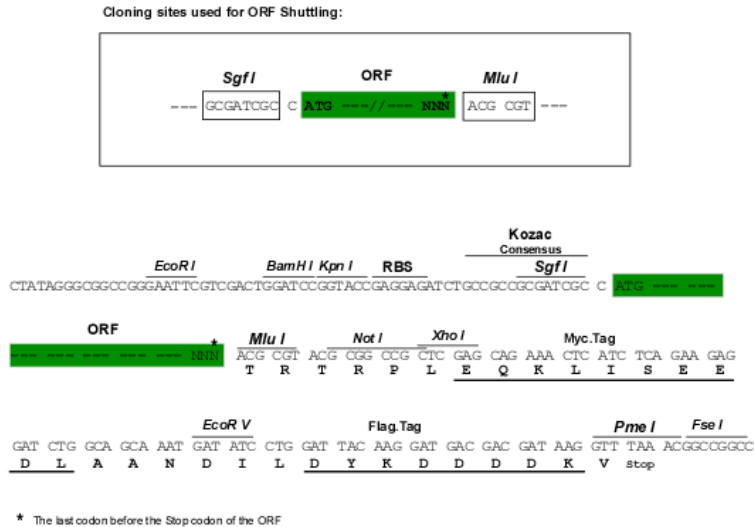
MSSIKIECVLPENCRGESPVWEEVSNLLFVDIPAKKVCRWDSFTKQVQRVTMDAPVSSVALRQSGGYV
 ATIGTKFCALNWKEQSAVVLATVDNDKKNRNFNDGKVDPAGRYFAGTMAEETAPAVLERHQGALYSLFPD
 HHVKKYFDQVDISNGLDWSLDHKIFYIDLSYSVDAFDYDLQTGQISNRRSVYKLEKEEQIPDGMCIDA
 EGKLWVACYNGGRVIRLDPVTGKRLQTVKLPVDKTTSCCFGGKNYSEMYVTCARDGMDPEGLLRQPEAGG
 IFKITGLGVKGIAPYSYAG

TRTRPLEQKLISEEDLAANDILDYKDDDDKV

Chromatograms: https://cdn.origene.com/chromatograms/mk6172_h12.zip

Restriction Sites: SgfI-MluI

Cloning Scheme:



ACCN: NM_004683

ORF Size: 897 bp

OTI Disclaimer: The molecular sequence of this clone aligns with the gene accession number as a point of reference only. However, individual transcript sequences of the same gene can differ through naturally occurring variations (e.g. polymorphisms), each with its own valid existence. This clone is substantially in agreement with the reference, but a complete review of all prevailing variants is recommended prior to use. [More info](#)

OTI Annotation: This clone was engineered to express the complete ORF with an expression tag. Expression varies depending on the nature of the gene.

Components: The ORF clone is ion-exchange column purified and shipped in a 2D barcoded Matrix tube containing 10ug of transfection-ready, dried plasmid DNA (reconstitute with 100 ul of water).

Reconstitution Method:

1. Centrifuge at 5,000xg for 5min.
2. Carefully open the tube and add 100ul of sterile water to dissolve the DNA.
3. Close the tube and incubate for 10 minutes at room temperature.
4. Briefly vortex the tube and then do a quick spin (less than 5000xg) to concentrate the liquid at the bottom.
5. Store the suspended plasmid at -20°C. The DNA is stable for at least one year from date of shipping when stored at -20°C.

RefSeq: [NM_004683.5](#)

RefSeq Size: 1635 bp

RefSeq ORF: 900 bp

Locus ID: 9104

UniProt ID: [Q15493](#)

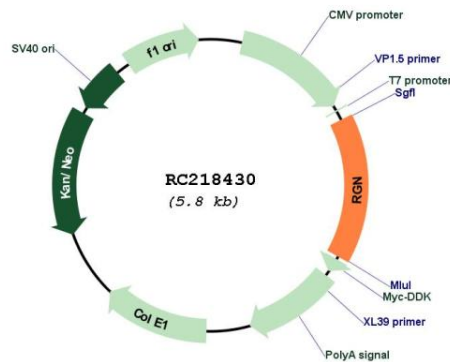
Cytogenetics: Xp11.3

Domains: SMP-30

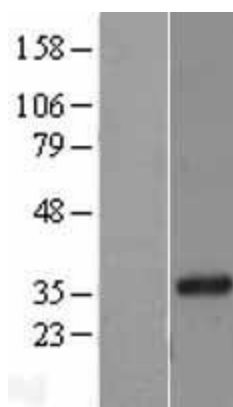
MW: 33.1 kDa

Gene Summary: The protein encoded by this gene is a highly conserved, calcium-binding protein, that is preferentially expressed in the liver and kidney. It may have an important role in calcium homeostasis. Studies in rat indicate that this protein may also play a role in aging, as it shows age-associated down-regulation. This gene is part of a gene cluster on chromosome Xp11.3-Xp11.23. Alternative splicing results in multiple transcript variants. [provided by RefSeq, Sep 2013]

Product images:



Circular map for RC218430



Western blot validation of overexpression lysate (Cat# [LY401485]) using anti-DDK antibody (Cat# [TA50011-100]). Left: Cell lysates from untransfected HEK293T cells; Right: Cell lysates from HEK293T cells transfected with RC218430 using transfection reagent MegaTran 2.0 (Cat# [TT210002]).