

Product datasheet for RC218428

Myosin 1G (MYO1G) (NM_033054) Human Tagged ORF Clone

Product data:

Product Type:	Expression Plasmids
Product Name:	Myosin 1G (MYO1G) (NM_033054) Human Tagged ORF Clone
Tag:	Myc-DDK
Symbol:	Myosin 1G
Synonyms:	HA2; HLA-HA2; MHAG
Mammalian Cell Selection:	Neomycin
Vector:	pCMV6-Entry (PS100001)
E. coli Selection:	Kanamycin (25 ug/mL)
ORF Nucleotide Sequence:	>RC218428 ORF sequence Red=Cloning site Blue=ORF Green=Tags(s)

TTTTGTAATACGACTCACTATAGGGCGGCCGGAATTCGTCGACTGGATCCGGTACCGAGGAGATCTGCC
GCC**CGATCGCC**

ATGGAGGACGAGGAAGGCCCTGAGTATGGCAAACCTGACTTTGTGCTTTTGGACCAAGTGACCATGGAGG
ACTTCATGAGGAACCTGCAGCTCAGGTTGAGAAGGGCCGCATCTACACCTACATCGGTGAGGTGCTGGT
GTCCGTGAACCCCTACCAGGAGCTGCCCTGTATGGGCCTGAGGCCATCGCCAGGTACCAGGGCCGTGAG
CTCTATGAGCGGCCACCCATCTCTATGCTGTGGCCAACGCCCTACAAGGCAATGAAGCACCGGTCCA
GGGACACCTGCATCGTCATCTCAGGGGAGAGTGGGGCAGGAAGACAGAAGCCAGTAAGCACATCATGCA
GTACATCGCTGCTGTACCAATCCAAGCCAGAGGGCTGAGGTGGAGAGGGTCAAGGACGTGCTGCTCAAG
TCCACCTGTGTGCTGGAGGCCTTTGGCAATGCCCGCACCAACCGCAATCACAACCTCCAGCCGCTTTGGCA
AGTACATGGACATCAACTTTGACTTCAAGGGGGACCCGATCGGAGGACACATCCACAGCTACCTACTGGA
GAAGTCTCGGGTCTCAAGCAGCACGTGGGTGAAAGAACTTCCACGCCTTCTACCAATTGCTGAGAGGC
AGTGAGGACAAGCAGCTGCATGAACTGCACTTGGAGAGAAACCTGCTGTATAACAATTCACACACCAGG
GAGCAGGACTCAACATGACTGTGCACAGTGCCTTGGACAGTGTGAGCAGAGCCACCAGGCAGTGACCGA
GGCCATGAGGGTTCATCGGCTTCAGTCTGAAGAGGTGGAGTCTGTGCATCGCATCCTGGCTGCCATATTG
CACCTGGGAAACATCGAGTTTGTGGAGACGGAGGAGGGTGGCTGCAGAAGGAGGGCTGGCAGTGGCCG
AGGAGGCACTGGTGGACCATGTGGCTGAGCTGACGGCCACACCCGGGACCTCGTGTCCGCTCCCTGCT
GGCTCGCACAGTTGCCTCGGGAGGCAGGGAACCTATAGAGAAGGGCCACACTGCAGCTGAGGCCAGCTAT
GCCCGGGATGCCTGTGCCAAGGCAGTGTACCAGCGGCTGTTTGTGAGTGGTGGTGAACAGGATCAACAGTG
TCATGGAACCCCGGGCCGGATCCTCGGCGTGATGGCAAGGACACAGTCATTGGCGTGTGGACATCTA
TGGCTTCGAGGTGTTCCCGTCAACAGTTTTCGAGCAGTTCTGCATCAACTACTGCAATGAGAAGCTGCAG
CAGCTATTCATCCAGCTCATCCTGAAGCAGGAACAGGAAGGTACGAGCGCGAGGGCATCACCTGGCAGA
GCGTTGAGTATTTCAACAACGCCACCATTGTGGATCTGGTGGAGCGGCCCCACCGTGGCATCCTGGCCGT
GCTGGACGAGGCCTGCAGCTCTGCTGGCACCATCACTGACCGAATCTTCTGCGAGACCCTGGACACGCAC



[View online »](#)

CACCGCCATCATCTACACTACACCAGCCGCCAGCTCTGCCCCACAGACAAGACCATGGAGTTTGGCCGAG
 ACTTCCGGATCAAGCACTATGCAGGGGACGTCAGTACTCCGTGGAAGGCTTCATCGACAAGAACAGAGA
 TTTCTCTTCCAGGACTTCAAGCGGCTGCTGTACAACAGCACGGACCCCACTCTACGGGCCATGTGGCCG
 GACGGGCAGCAGGACATCACAGAGGTGACCAAGCGCCCTGACGGCTGGCACACTCTTCAAGAACTCCA
 TGGTGGCCCTGGTGGAGAACCTTGCTCCAAGGAGCCCTTCTACGTCCGCTGCATCAAGCCCAATGAGGA
 CAAGGTAGTGGGAAGCTGGATGAGAACCCTGTGCCACCAGGTGCGATACCTGGGGCTGCTGGAGAAT
 GTAGGGTCCGCAGGGCTGGCTTCGCTTCCCGCCAGCCCTACTCTCGATTCTGCTCAGGTACAAGATGA
 CCTGTGAATACACATGGCCCAACCACCTGCTGGGCTCCGACAAGGCAGCGGTGAGCGCTCTCCTGGAGCA
 GCATGGGCTGCAGGGGGACGTGGCCTTTGGCCACAGCAAGCTGTTTCATCCGCTCACCCCGGACACTGGTC
 ACACTGGAGCAGAGCCGAGCCCGCCTCATCCCCATCATTGTGCTGCTATTGCAGAAGGCATGGCGGGCA
 CCTTGGCAGGTGGCGTGCAGGAGGCTGAGGGCTATCTACACCATCATGCGCTGGTTCGGGAGACAAA
 GGTGCGGGCTCACCTGGCTGAGCTGCAGCGCGATTCCAGGCTGCAAGGCAGCCGCCACTCTACGGGCGT
 GACCTTGTGTGGCCGCTGCCCTGCTGTGCTGCAGCCCTCCAGGACACCTGCCACGCACTTCTTGTCA
 GGTGGCGGGCCCGCAGCTGGTGAAGAATCCCCCTTCAGACATGCCCAAGTCAAGGCCAAGGTGGC
 CGCATGGGGCCCTGCAAGGGCTTCGTCAGGACTGGGGTGGCCAGGGCTGGGCCGAGACTACCTG
 TCCTCTGCCACTGACAATCCACAGCATCAAGCCTGTTTGTCTCAGCGACTAAAGACACTTCGGGACAAA
 ATGGCTTCGGGGCTGTGCTCTTTTCAAGCCATGTCGCAAGGTGAACCGCTTCCACAAGTCCGGAAACCG
 GGCCCTCTGCTCACAGACCAGCACCTCTACAAGCTGGACCTGACCGGCAGTACCGGGTATGCGGGCC
 GTGCCCTTGGAGCGGTGACGGGGCTGAGCGTGACAGCGGAGGAGACCAGTGGTGGTGTGCACGCCC
 GCGGCCAGGACACCTCGTGGTGTGCTGCACCGCTCCCGGCCGCAATTGGACAACCGGTTGGGGAGCT
 GGTGGGCGTGTGGCCGACACTGCCAGGGGGAGGGCCGACCCCTGGAGGTTCCGCTCTCCGACTGCATC
 CCACTAAGCCATCGCGGGTCCGGCCCTCATCTCCGTGGAGCCAGGCCGGAGCAGCCAGAGCCCGATT
 TCCGCTGCGCTCGCGGCTCCTTACCCTGCTCTGGCCAGCCG

ACGCGTACGCGGGCCTCGAGCAGAACTCATCTCAGAAGAGGATCTGGCAGCAAATGATATCCTGGATT
 ACAAGGATGACGACGATAAGGTTTAA

Protein Sequence:

>RC218428 protein sequence
 Red=Cloning site Green=Tags(s)

MEDEEGPEYKPDFVLLDQVTMEDFMRLQLRFEKGRITYIYIGEVLSVSNPYQELPLYGPEAIARYQGRE
 LYERPPHLYAVANAAYKAMKHSRDTCTIVISGSGAGKTEASKHIMQYIAAVTNPQSRAEVERVKDVLK
 STCVLEAFGNARTNRNHSSRFKGYMDINDFKGDPIGGHIHSYLLEKSRVLKQHVGERNFHAFYQLLRG
 SEDKQLHELHLERNPAVYNFTHQGAGLNMVHSALDSDEQSHQAVTEAMRVIGFSPEEVESVHRILAAIL
 HLGNIIEFVETEEGGLQKEGLAVAEALVDHVAELTATPRDLVLRSLARTVASGGRELIEKGHTAAEASY
 ARDACAKAVYQRLFVWVNRINSVMEPRGRDPRRDGKDTVIGVLDIYGFVFPVNSFEQFCINYCNEKLQ
 QLFIQILKQEQEYEREGITWQSVEYFNATIVDLVERPHRGILAVLDEACSSAGTITDRIFLQTLTDTH
 HRHHLHYTSRQLCPTDKTMEFGRDFRIKHYAGDVTYSVEGFIDKNRDLFQDFKRLLYNSTDPTLRAMWP
 DGQQDITEVTKRPLTAGTLFKNSMVALVENLASKEPFYVRCIKPNEDKVAGKLDENHCRHQVAYLGLLEN
 VRVRRAGFASRQPYRFLRLRYKMTCEYTPNHLLGSDKAAVSALLEQHGLQGDDVAFGHSKLFIKSPRTL
 TLEQSRARLIPILVLLQKAWRGTARWRRLRAIYIMRWFRRHKVRHLAELQRRFQAARQPPLYGR
 DLVWPLPPAVLQPFQDTCHALFCRWRARQLVKNIPSPDMPQIKAKVAAMGALQGLRQDWGCRRAWARDYL
 SSATDNPTASSLFAQRLKTLRDKDGFVAVLSSHVRKVNRFHKIRNRALLTDQHLKLDPDRQYRVMRA
 VPLEAVTGLSVTSGGDQLVVLHARGQDDLVVCLHRSRPPLDNRVGEVGVLAHHCQGEGRTEVVRVSDCI
 PLSHRGVRRLLISVEPRPEQPEPDFRCARGSFLLWPSR

TRTRPLEQKLISEEDLAANDILDYKDDDDKV

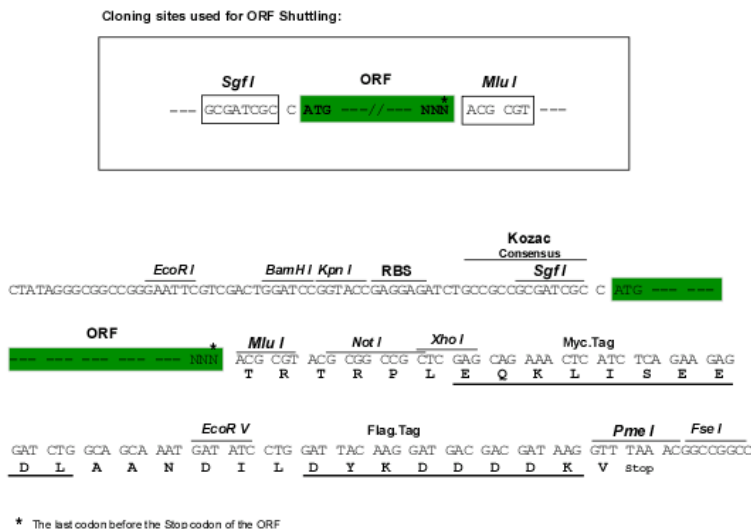
Chromatograms:

https://cdn.origene.com/chromatograms/mk6680_h01.zip

Restriction Sites:

Sgfl-Mlul

Cloning Scheme:



ACCN: NM_033054

ORF Size: 3054 bp

OTI Disclaimer: The molecular sequence of this clone aligns with the gene accession number as a point of reference only. However, individual transcript sequences of the same gene can differ through naturally occurring variations (e.g. polymorphisms), each with its own valid existence. This clone is substantially in agreement with the reference, but a complete review of all prevailing variants is recommended prior to use. [More info](#)

OTI Annotation: This clone was engineered to express the complete ORF with an expression tag. Expression varies depending on the nature of the gene.

Components: The ORF clone is ion-exchange column purified and shipped in a 2D barcoded Matrix tube containing 10ug of transfection-ready, dried plasmid DNA (reconstitute with 100 ul of water).

Reconstitution Method:

1. Centrifuge at 5,000xg for 5min.
2. Carefully open the tube and add 100ul of sterile water to dissolve the DNA.
3. Close the tube and incubate for 10 minutes at room temperature.
4. Briefly vortex the tube and then do a quick spin (less than 5000xg) to concentrate the liquid at the bottom.
5. Store the suspended plasmid at -20°C. The DNA is stable for at least one year from date of shipping when stored at -20°C.

RefSeq: [NM_033054.3](#)

RefSeq Size: 3313 bp

RefSeq ORF: 3057 bp

Locus ID: 64005

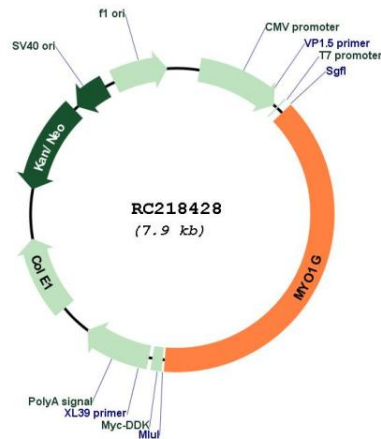
UniProt ID: [B0I1T2](#)

Cytogenetics: 7p13

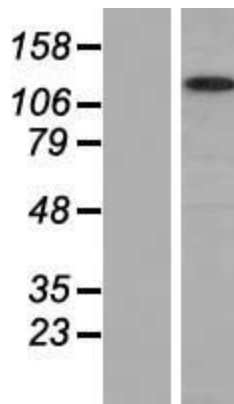
MW: 116.4 kDa

Gene Summary: MYO1G is a plasma membrane-associated class I myosin (see MIM 601478) that is abundant in T and B lymphocytes and mast cells (Pierce et al., 2001 [PubMed 11544309]; Patino-Lopez et al., 2010 [PubMed 20071333]).[supplied by OMIM, Jun 2010]

Product images:



Circular map for RC218428



Western blot validation of overexpression lysate (Cat# [LY409764]) using anti-DDK antibody (Cat# [TA50011-100]). Left: Cell lysates from untransfected HEK293T cells; Right: Cell lysates from HEK293T cells transfected with RC218428 using transfection reagent MegaTran 2.0 (Cat# [TT210002]).