

Product datasheet for **RC218422**

RNF20 (NM_019592) Human Tagged ORF Clone

Product data:

Product Type:	Expression Plasmids
Product Name:	RNF20 (NM_019592) Human Tagged ORF Clone
Tag:	Myc-DDK
Symbol:	RNF20
Synonyms:	BRE1; BRE1A; hBRE1
Mammalian Cell Selection:	Neomycin
Vector:	pCMV6-Entry (PS100001)
E. coli Selection:	Kanamycin (25 ug/mL)



[View online »](#)

ORF Nucleotide Sequence:

>RC218422 ORF sequence
 Red=Cloning site Blue=ORF Green=Tags(s)

TTTTGTAATACGACTCACTATAGGGCGGCCGGAATTCGTCGACTGGATCCGGTACCGAGGAGATCTGCC
 GCC**CGCATCGCC**

ATGTCAGGAATTGAAATAAAAGAGCAGCTGGAGAACCTGGCACCTCCATGCCTCTGAGAAGAAGGCAG
 CTGTTGAAGATTCAGGGACCACAGTGGAAACAATTAAGCTAGGAGGTGTCTCTTCAACGGAGGAAC TAGA
 CATTAGAACACTGCAAACCAAAAATCGCAAGCTGGCAGAAATGTTGGATCAGCGGACGGCCATTGAAGAT
 GAACCTCGTGAGCACATTGAAAACTGGAACGACGACAGGCCACTGATGATGCCTCACTATTGATTGTCA
 ACCGATACTGGAGTCAGTTTGTGAAAACATCCGTATCATCCTTAAACGTTATGATCTGGAGCAGGGCTT
 GGGAGACCTACTCACAGAACGAAAAGCCCTTGTGTGCCTGAACCAGAACCAGACTCTGATAGCAATCAG
 GAGCGTAAAGATACCGAGAGAGAGGGGAAGGGCAAGAGCCAGCTTCTCTTCTTCTGCTACTTTGGCCA
 GCAGTTCCAGTGAAGAGATGGAGTCTCAGCTGCAGGAACGTGTGGAGTCTTCCCGCCGAGCCGTGTCCCA
 GATTGTGACTGTTTATGATAAATGCAAGAAAAAGTGGAGCTTATCCCGGAAGCTAAACAGTGGAGAT
 AATCTGATAGTGGAGGAAGCAGTGCAGGAGCTGAACTCTTTCCTCGCACAGGAGAATATGAGGCTACAGG
 AATTGACAGATCTTCTCAGGAAAAGCATCGCACCATGTCTCAGGAGTCTCCAAGTTGCAGAGTAAAGT
 GGAGACAGCCGAATCACGAGTGTCTGTCTGGAGTCCATGATTGATGACCTGCAGTGGGATATTGACAAA
 ATTCGAAAGAGGGAAACAGCGACTCAACCACACTTAGCAGAAGTCTAGAACGGGTGAATTCCAAAGGTT
 ATAAGGTGATGGAGCGGGGAGCAGTCTGTATGGCGGCACAATCACTATCAATGCTCGGAAGTTTGAGGA
 AATGAATGCAGAGCTTGAGGAGAACAAGAGTTGGCTCAGAACCCTCTCTGTGAGCTGGAGAACTTCGG
 CAAGACTTTGAGGAGTCACTACAAAAATGAAAAGCTGAAGGTGAATTGCGGAGTGCAGTGGAGCAAG
 TCGTTAAGGAACTCCAGAATATCGCTGCATGCAGTACAGTTCTCCGTCTTGTATAATGAGAGCCATA
 GTTGAAGCACACTTGGATGAGGCTCGGACCCTGCTTCATGGCACAGAGGAACCCACCAGCACCGGTT
 GAGCTTATTGAGCGAGATGAGGTTAGTCTTCATAAGAAGCTGAGGACTGAAGTAATTCAGCTAGAAGATA
 CATTGGCCAGGTCCGCAAGGAGTATGAAATGCTGAGGATAGAATTTGAGCAGACCCTTGCTGCCAATGA
 ACAAGCAGGCCCTATAAACAGGGAGATGCGCCACCTCATCAGTAGCCTCCAGAATCACAATCACCAGCTG
 AAAGGGGAGGTCCTGAGATATAAGCGGAAATTGAGAGAAGCCAGTCTGACCTGAACAAGACACGCCCTGC
 GTAGTGGTAGTCCCTCCTGCAGTCCCAGTCTAGTACTGAGGACCCGAAGGATGAGCCTGCGGAGCTAAA
 ACCAGATTCTGAGGACTTATCCTCCCAGTCTCAGCTTCAAAGGCATCTCAGGAGGATGCCAATGAAATC
 AAGTCTAAACGGGATGAAGAAGAACGAGAACGAGAAAGGAGGGAGAAGGAGAGGGAAACGAGAAGAGAAC
 GGGAGAAGGAGAAGGAGAGAGAACGAGAGAAGCAGAAGCTAAAAGAGTCAGAAAAAGAGAGAGATTCTGC
 TAAGGATAAAGAGAAAGGCAAACATGATGATGGACGAAAAAGGAAGCAGAAATTATCAAACAATTGAAG
 ATTGAACCAAGAAGGCACAGGAGAGCCAAAAGGAGATGAAACTATTGCTGGATATGACCGTTCTGCC
 CAAAGGAACAGAGAGACAAAGTTCAGCTGATGGCAGCTGAGAAGAAGTCTAAGGCAGAGTTGGAAGATCT
 AAGGCAAAGACTCAAGGATCTGGAAGATAAAGAGAAGAAAGAGAACAAGAAAATGGCTGATGAGGATGCC
 TTGAGGAAGATCCGGGCAGTGGAGGAGCAGATAGAATACCTACAGAAGAAGCTAGCCATGGCCAAGCAGG
 AAGAAGAAGCACTCCTCTCTGAAATGGATGTACAGGCCAGGCCCTTTGAAGACATGCAGGAGCAAAATAT
 CCGTTTGTGTCAGCAATTGCGGGAGAAGGATGATGCAAAATTTCAAGCTCATGTGAGAGCGTATCAAGTCC
 AATCAGATCCATAAGTTGCTTAAAGAAGAAAGGAGGAGCTGGCAGACCAGGTGTTGACTCTGAAGACTC
 AGGTTGATGCCAGCTACAGGTAGTAAGGAAAAGTGAAGAGAAGGAGCATCTGTTACAGAGCAACATTGG
 CACAGGGGAGAAAGAGCTGGGTCTTAGGACCCAAGCCTTAGAGATGAATAAACGCAAGGCAATGGAGGCA
 GCCCAGCTTGAGATGACCTCAAAGCACAACCTGGAGTTGGCTCAGAAGAAGCTACATGATTTTCAGGATG
 AGATCGTGGAGAACAGTGTACCAAAGAAAAGGACATGTTCAATTTCAAACGAGCCAGGAGGACATCTC
 TAGACTTCGAGGAAGCTGGAGACCACAAAGAAACCAGACAATGTACCCAAGTGTGATGAGATTCTGATG
 GAAGAGATTAAGGATTACAAGGCAGCTTGACCTGTCCGTGCTGAACATGCGTAAAAAGGATGCTGTTT
 TACTAAGTGTTTTCATGTCTTCTGCTTTGAGTGTGTGAAGACACGCTATGACACCCGCCAGCGCAAATG
 TCCAAGTGTAATGCTGCTTTTGGTGCCAAATGATTTTCATCGCATCTACATTGGT

ACGCGTACGCGGCCGCTCGAGCAGAACTCATCTCAGAAGAGGATCTGGCAGCAAATGATATCCTGGATT
 ACAAGGATGACGACGATAAGGTTTAA

Protein Sequence: >RC218422 protein sequence
Red=Cloning site Green=Tags(s)

```

MSGIGNKRAAGEPGTSMPEKKAAVEDSGTTVETIKLGGVSSTEELDIRTLQTKNRKLAEMLDQRQAIED
ELREHIEKLERRQATDDASLLIVNRYWSQFDENIRIILKRYDLEQGLGDLLTERKALVPEPEPDSNSQ
ERKDDREREGEQEPAFSFLATLASSSSEEMESQLQERVESRRRAVSQIVTVYDKLQEKVELLSRKLNSGD
NLIVEEAVQELNSFLAQENMRLQELTDLLQEKHRTMSQEF SKLQSKVETAESRVSVLES MIDDLEQWDIDK
IRKREQRLNRHLAEVLERVNSKGKVKYAGGSSLYGGTITINARKFEEMNAELEENKELAQNRLCELEKLR
QDFEEVTTQNEKLVELRSAVEQVVKETPEYRCMQSQFSVLYNESLQLKAHLDEARTLLHGRTRGTHQHV
ELIERDEVSLHKKLRTEVIQLEDTLAQRKEYEMLRIEFEQTLAANEQAGPINREMRHLISSLQNHNHQL
KGEVLYRKRKLEAQSDLNKTRLRSGSALLQSQSSTEDPKDEPAELKPDSEDLSSQSSASKASQEDANEI
KSKRDEEEREREREREKEREREREKEREREREKQKLESEKERDSAKDKEKGKHDGRRKKEAEIKQLK
IELKKAQESQKEMKLLLDMYRSAPKEQRDKVQLMAAEKSKAELEDLRQLKDLEDKEKKENKMADEDA
LRKIRAVEEQIEYLQKKLAMAKQEEEALLSEMDVTGQAFEDMQEONIRLMQQLREKDDANFKLMSERIKS
NQIHKLLKEEKEELADQVLTCLKQVDAQLVVRKLEEKELLLQSNIGTGEKELGLRTQALEMNRKAMEA
AQLADDLKAQLELAQKKLHDFQDEIVENSVTKEKDMFNFKRAQEDISRLRRKLETTKKPDNVPKCDEILM
EEIKDYKARLTCPCCNMRKKDAVLTCKCFHVFCFECVKTRYDTRQRKCPKNAAFGANDFHRIYIG
    
```

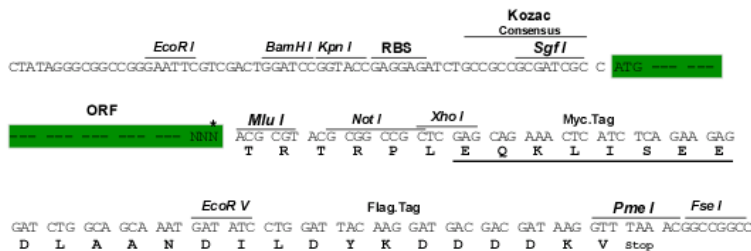
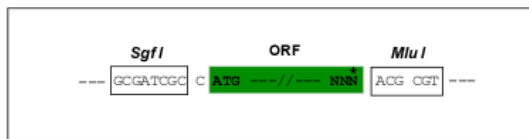
TRTRPLEQKLISEEDLAANDILDYKDDDDKV

Chromatograms: https://cdn.origene.com/chromatograms/mk6689_f04.zip

Restriction Sites: SgfI-MluI

Cloning Scheme:

Cloning sites used for ORF Shuttling:



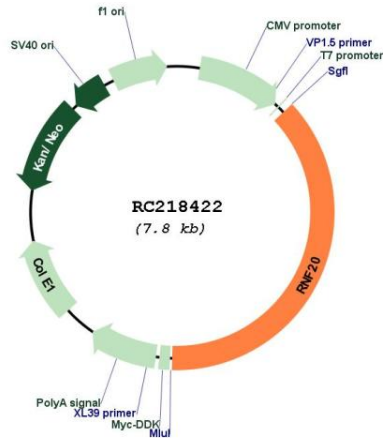
* The last codon before the Stop codon of the ORF

ACCN: NM_019592

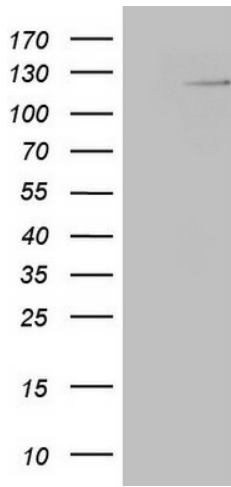
ORF Size: 2925 bp

OTI Disclaimer:	The molecular sequence of this clone aligns with the gene accession number as a point of reference only. However, individual transcript sequences of the same gene can differ through naturally occurring variations (e.g. polymorphisms), each with its own valid existence. This clone is substantially in agreement with the reference, but a complete review of all prevailing variants is recommended prior to use. More info
OTI Annotation:	This clone was engineered to express the complete ORF with an expression tag. Expression varies depending on the nature of the gene.
Components:	The ORF clone is ion-exchange column purified and shipped in a 2D barcoded Matrix tube containing 10ug of transfection-ready, dried plasmid DNA (reconstitute with 100 ul of water).
Reconstitution Method:	<ol style="list-style-type: none">1. Centrifuge at 5,000xg for 5min.2. Carefully open the tube and add 100ul of sterile water to dissolve the DNA.3. Close the tube and incubate for 10 minutes at room temperature.4. Briefly vortex the tube and then do a quick spin (less than 5000xg) to concentrate the liquid at the bottom.5. Store the suspended plasmid at -20°C. The DNA is stable for at least one year from date of shipping when stored at -20°C.
Note:	Plasmids are not sterile. For experiments where strict sterility is required, filtration with 0.22um filter is required.
RefSeq:	NM_019592.7
RefSeq Size:	3972 bp
RefSeq ORF:	2928 bp
Locus ID:	56254
UniProt ID:	Q5VTR2
Cytogenetics:	9q31.1
Domains:	RING
Protein Families:	Druggable Genome
MW:	113.7 kDa
Gene Summary:	The protein encoded by this gene shares similarity with BRE1 of <i>S. cerevisiae</i> . The protein encoded by this human gene is an E3 ubiquitin ligase that regulates chromosome structure by monoubiquitinating histone H2B. This protein acts as a putative tumor suppressor and positively regulates the p53 tumor suppressor as well as numerous histone H2A and H2B genes. In contrast, this protein also suppresses the expression of several protooncogenes and growth-related genes, including many genes that are induced by epidermal growth factor. This gene selectively suppresses the expression of some genes by interfering with chromatin recruitment of transcription elongation factor SII (TFIIS). [provided by RefSeq, Feb 2012]

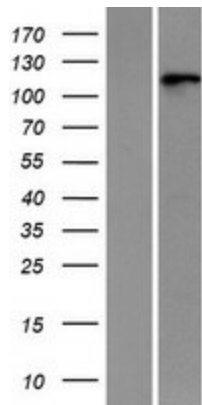
Product images:



Circular map for RC218422



HEK293T cells were transfected with the pCMV6-ENTRY control (Cat# [PS100001], Left lane) or pCMV6-ENTRY RNF20 (Cat# RC218422, Right lane) cDNA for 48 hrs and lysed. Equivalent amounts of cell lysates (5 ug per lane) were separated by SDS-PAGE and immunoblotted with anti-RNF20 (Cat# [TA807610])(1:500). Positive lysates [LY412703] (100ug) and [LC412703] (20ug) can be purchased separately from OriGene.



Western blot validation of overexpression lysate (Cat# [LY412703]) using anti-DDK antibody (Cat# [TA50011-100]). Left: Cell lysates from untransfected HEK293T cells; Right: Cell lysates from HEK293T cells transfected with RC218422 using transfection reagent MegaTran 2.0 (Cat# [TT210002]).