

## Product datasheet for **RC218420**

### **HSP90AA1 (NM\_001017963) Human Tagged ORF Clone**

#### **Product data:**

Product Type:	Expression Plasmids
Product Name:	HSP90AA1 (NM_001017963) Human Tagged ORF Clone
Tag:	Myc-DDK
Symbol:	HSP90AA1
Synonyms:	EL52; HEL-S-65p; HSP86; Hsp89; HSP89A; Hsp90; HSP90A; HSP90N; Hsp103; HSPC1; HSPCA; HSPCAL1; HSPCAL4; HSPN; LAP-2; LAP2
Mammalian Cell Selection:	Neomycin
Vector:	pCMV6-Entry (PS100001)
E. coli Selection:	Kanamycin (25 ug/mL)



[View online »](#)

**ORF Nucleotide  
Sequence:**

>RC218420 representing NM\_001017963  
 Red=Cloning site Blue=ORF Green=Tags(s)

TTTTGTAATACGACTCACTATAGGGCGGCCGGGAATTCGTGACTGGATCCGGTACCGAGGAGATCTGCC  
 GCC**CGCATCGCC**

ATGCCCCGTGTTCTGGGCGGGACGGCTCCACCCCTCCTGGGCCCTCCCTTCGGGACAGGGACTGTCCCG  
 CCCAGAGTGTGAATACCGCGCGACCGTCTGGATCCCCGCCAGGAAGCCCTCTGAAGCCTCCTCGCC  
 GCCGTTTCTGAGAAGGGCACCTGTTAACTGGTACCAAGAAAAGGCCCAAGTGTCTCTGGCATCTGTTG  
 GTGTCTGGATCCACCACTCTACTCTGTCTCTGGAAACAGCCCTTCCACGTCTCTGCATTCCCTGTCACTG  
 CGTCACTGGCCTTCAGACAGAGCCAAGGTGCAGGGCAACACCTCTACAAGGATCTGCAGCCATTTATATT  
 GCTTAGGCTACTGATGCCTGAGGAAACCCAGACCAAGACCAACCGATGGAGGAGGAGGAGTTGAGACG  
 TTCGCTTTCAGGCAGAAATTGCCAGTTGATGTCATTGATCATCAATACTTTCTACTCGAACAAAGAGA  
 TCTTTCTGAGAGAGCTCATTCAAATTCATCAGATGCATTGGACAAAATCCGGTATGAAAGCTTGACAGA  
 TCCAGTAAATTAGACTCTGGGAAAGAGCTGCATATTAACCTTATACCGAACAAACAAGATCGAAGTCTC  
 ACTATTGTGGATACTGGAATTGGAATGACCAAGGCTGACTTGATCAATAACCTTGGTACTATCGCCAAGT  
 CTGGGACCAAAGCGTTCATGGAAGCTTTCAGGCTGGTGAGATATCTCTATGATTGGCCAGTTCGGTGT  
 TGGTTTTTATTCTGCTTATTGGTTGCTGAGAAAGTAACTGTGATCACCAAAACATAACGATGATGAGCAG  
 TACGCTTGGGAGTCTCAGCAGGGGGATCATTACAGTGAGGACAGACACAGGTGAACCTATGGTTCGTG  
 GAACAAAAGTTATCCTACACCTGAAAGAAGACCAAACTGAGTACTTGGAGGAACGAAGAATAAAGGAGAT  
 TGTGAAGAAACATTCTCAGTTTATTGGATATCCATTACTCTTTTGTGGAGAAGGAACGTGATAAAGAA  
 GTAAGCGATGATGAGGCTGAAGAAAAGGAAGACAAAGAAGAAGAAAAGAAAAGAGAGAAAGAGTCCG  
 AAGACAAAACCTGAAATTGAAGATGTTGGTCTGATGAGGAAGAAGAAAAGAAAGGATGGTGACAAGAA  
 GAAGAAGAAGATTAAAGGAAAAGTACATCGATCAAGAAGAGCTCAACAAAACAAAGCCCATCTGGACCAGA  
 AATCCCGACGATATTACTAATGAGGAGTACGGAGAATTCTATAAGAGCTTGACCAATGACTGGGAAGATC  
 ACTTGGCAGTGAAGCATTTTTTCAGTTGAAGGACAGTTGGAATTCAGAGCCCTTCTATTTGTCCCACGACG  
 TGCTCCTTTTGTCTGTTTGAACAGAAAAGAAAAGAACAATATCAAATGTATGTACGCAGAGTTTTT  
 ATCATGGATAACTGTGAGGAGCTAATCCCTGAATATCTGAACTTCATTAGAGGGTGGTAGACTCGGAGG  
 ATCTCCCTCTAAACATATCCCGTGAAGTGTGCAACAAAGCAAAATTTTGAAGTTATCAGGAAGAATTT  
 GGTCAAAAATGCTTAGAACTCTTACTGAACTGGCGGAAGATAAAGAGAACTACAAGAAATTTCTATGAG  
 CAGTTCTCTAAAACATAAAGCTTGAATACACGAAGACTCTCAAAATCGGAAGAAGCTTTCAGAGCTGT  
 TAAGGTAATACACATCTGCCTCTGGTGTGAGATGGTTTTCTCTCAAGGACTACTGCACCAGAATGAAGGA  
 GAACCAGAAACATATCTATTATATCACAGGTGAGACCAAGGACCAGGTAGCTAACTCAGCCTTTGTGGAA  
 CGTCTTCGGAAACATGGCTTAGAAGTGTATATGATTGAGCCCATGATGAGTACTGTGTCCAACAGC  
 TGAAGGAATTTGAGGGGAAGACTTTAGTGTGAGTACCAAAAGAAGGCCTGGAACCTCCAGAGGATGAAGA  
 AGAGAAAAGAAGCAGGAAGAGAAAAAACAAGTTTGAAGACCTCTGCAAAATCATGAAAGACATATTG  
 GAGAAAAAGTTGAAAAGGTGGTTGTGTCAAACCGATTGGTGACATCTCCATGCTGTATTGTCACAAGCA  
 CATATGGCTGGACAGCAAACATGGAGAGAATCATGAAAGCTCAAGCCCTAAGAGACAACCAACAATGGG  
 TTACATGGCAGCAAAGAAACACCTGGAGATAAACCCCTGACCATTCCATTATTGAGACCTTAAAGCAAAAG  
 GCAGAGGCTGATAAGAACGACAAGTCTGTGAAGGATCTGGTTCATCTTGCTTTATGAAAACCTGCGCTCCTGT  
 CTCTGGCTTTCAGTCTGGAAGATCCCCAGACACATGCTAACAGGATCTACAGGATGATCAAACCTGGTCT  
 GGGTATTGATGAAGATGACCCTACTGCTGATGATACCAGTCTGCTGTAAGTGAAGAAATGCCACCCCTT  
 GAAGGAGATGACGACACATCACGCATGGAAGAAGTAGAC

**ACGCGT**ACGCGGCCGCTCGAGCAGAACTCATCTCAGAAGAGGATCTGGCAGCAATGATATCCTGGATT  
 ACAAGGATGACGACGATAAGGTTTAA

**Protein Sequence:** >RC218420 representing NM\_001017963  
 Red=Cloning site Green=Tags(s)

MPPCSGGDSTPPGSLRDRDCPAQSAEYPRDLDRPGSPSEASSPPFLRRAPVNWYQEKAQVFLWHLL  
 VSGSTLLCLWKQPFHVSAFPVTASLAFRQSQGAGQHL YKDLQPFILLRLLMPEETQTQDQPMEEEEVET  
 FAFQAEIAQLMSLIINTFYSNKEIFLRELISNSSDALDKIRYESLTDPSKLDSGKELHINLIPNKQDRTL  
 TIVDTGIGMTKADLINNLTIAKSGTKAFMEALQAGADISMIGQFVGFYSAYLVAEKVTVITKHNDDEQ  
 YAWESSAGGSFTVRTDTGEPMGRGTKVILHLKEDQTEYLEERRIKEIVKKHSQFIGYPITL FVEKERDKE  
 VSDDEAEKEKEDKEEEKEKEEKESEDKPEIEDVGSDEEEKKDGDKDKKKKKIKEYIDQEELNKTPIWTR  
 NPDDITNEEYGEFYKSLTNDWEDHLAVKHFVSEGQLEFRALLFVPRRAPFDL FENRKKNNIKLYVRRVF  
 IMDNCEELIPEYLNFI RGVVDEDLPLNISREMLQQSKILKVIKKNLVKKCLELFT ELAEDKENYKFFYE  
 QFSKNIKLGIHEDSQNRKKLSELLRYYSASGDEMVS LKDYCTRMKENQKHIYYITGETKDQVANS AFVE  
 RLRKHGLEVIYMI EPIDEYCVQQLKEFEGKTLVSVTKEGLELPEDEEEKKQEEKTKFENLCKIMKDIL  
 EKKVEKVVVSNRLVTS PCCIVTSTYGTANMERIMKAQALRDNSTMGYMAAKKHLEINPDHSIIETLRQK  
 AEADKNDKSVKDLVILL YETALLSSGFSLEDPQTHANRIYRMIKLGLGIDEDDPTADDTSAAVTEEM PPL  
 EGDDDTSRMEEVD

TRTRPLEQKLISEEDLAANDILDYKDDDDKV

**Chromatograms:** [https://cdn.origene.com/chromatograms/mk6167\\_b12.zip](https://cdn.origene.com/chromatograms/mk6167_b12.zip)

**Restriction Sites:** SgfI-MluI

**Cloning Scheme:**

Cloning sites used for ORF Shuttling:

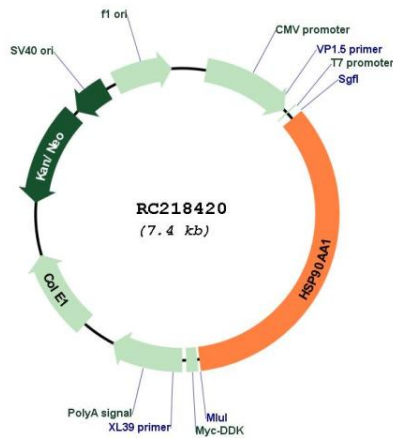


\* The last codon before the Stop codon of the ORF

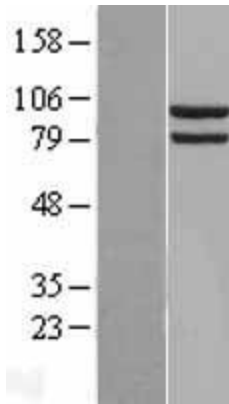
**ACCN:** NM\_001017963

<b>ORF Size:</b>	2565 bp
<b>OTI Disclaimer:</b>	<p>Due to the inherent nature of this plasmid, standard methods to replicate additional amounts of DNA in E. coli are highly likely to result in mutations and/or rearrangements. Therefore, OriGene does not guarantee the capability to replicate this plasmid DNA. Additional amounts of DNA can be purchased from OriGene with batch-specific, full-sequence verification at a reduced cost. Please contact our customer care team at <a href="mailto:custsupport@origene.com">custsupport@origene.com</a> or by calling 301.340.3188 option 3 for pricing and delivery.</p> <p>The molecular sequence of this clone aligns with the gene accession number as a point of reference only. However, individual transcript sequences of the same gene can differ through naturally occurring variations (e.g. polymorphisms), each with its own valid existence. This clone is substantially in agreement with the reference, but a complete review of all prevailing variants is recommended prior to use. <a href="#">More info</a></p>
<b>OTI Annotation:</b>	This clone was engineered to express the complete ORF with an expression tag. Expression varies depending on the nature of the gene.
<b>Components:</b>	The ORF clone is ion-exchange column purified and shipped in a 2D barcoded Matrix tube containing 10ug of transfection-ready, dried plasmid DNA (reconstitute with 100 ul of water).
<b>Reconstitution Method:</b>	<ol style="list-style-type: none"><li>1. Centrifuge at 5,000xg for 5min.</li><li>2. Carefully open the tube and add 100ul of sterile water to dissolve the DNA.</li><li>3. Close the tube and incubate for 10 minutes at room temperature.</li><li>4. Briefly vortex the tube and then do a quick spin (less than 5000xg) to concentrate the liquid at the bottom.</li><li>5. Store the suspended plasmid at -20°C. The DNA is stable for at least one year from date of shipping when stored at -20°C.</li></ol>
<b>RefSeq:</b>	<a href="#">NM_001017963.3</a>
<b>RefSeq Size:</b>	3880 bp
<b>RefSeq ORF:</b>	2565 bp
<b>Locus ID:</b>	3320
<b>UniProt ID:</b>	<a href="#">P07900</a>
<b>Cytogenetics:</b>	14q32.31
<b>Protein Families:</b>	Druggable Genome
<b>Protein Pathways:</b>	Antigen processing and presentation, NOD-like receptor signaling pathway, Pathways in cancer, Progesterone-mediated oocyte maturation, Prostate cancer
<b>MW:</b>	98 kDa
<b>Gene Summary:</b>	The protein encoded by this gene is an inducible molecular chaperone that functions as a homodimer. The encoded protein aids in the proper folding of specific target proteins by use of an ATPase activity that is modulated by co-chaperones. Two transcript variants encoding different isoforms have been found for this gene. [provided by RefSeq, Jan 2012]

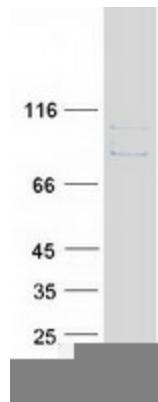
Product images:



Circular map for RC218420



Western blot validation of overexpression lysate (Cat# [LY400399]) using anti-DDK antibody (Cat# [TA50011-100]). Left: Cell lysates from untransfected HEK293T cells; Right: Cell lysates from HEK293T cells transfected with RC218420 using transfection reagent MegaTran 2.0 (Cat# [TT210002]).



Coomassie blue staining of purified HSP90AA1 protein (Cat# [TP318420]). The protein was produced from HEK293T cells transfected with HSP90AA1 cDNA clone (Cat# RC218420) using MegaTran 2.0 (Cat# [TT210002]).