

Product datasheet for RC218395

CMTM7 (NM_181472) Human Tagged ORF Clone

Product data:

Product Type: Expression Plasmids
Product Name: CMTM7 (NM_181472) Human Tagged ORF Clone
Tag: Myc-DDK
Symbol: CMTM7
Synonyms: CKLFSF7
Mammalian Cell Selection: Neomycin
Vector: pCMV6-Entry (PS100001)
E. coli Selection: Kanamycin (25 ug/mL)
ORF Nucleotide Sequence: >RC218395 representing NM_181472
Red=Cloning site Blue=ORF Green=Tags(s)

TTTTGTAATACGACTCACTATAGGGCGGCCGGAATTCGTCGACTGGATCCGGTACCGAGGAGATCTGCC
GCC**CGATCGCC**

ATGTCGCACGGAGCCGGGCTCGTCCGCACCACGTGCAGCAGCGGCAGCGCTCGGACCCGGGGCCGGCG
CGGCCAGCCAGCGCGAGCCCTTGGAGGGGCTGCTGGACCTCAGTACCCCGCACCCACGGGCCCT
GCTGAAAGTGGCGAAATGGTACCCTGCTGATTGCCTTCATCTGTGTGCGGAGCTCCCTGTGGACCAAC
TACAGCGCTACAGCTACTTTGAAGTGGTACCATTTGCGACTTGATAATGATCCTCGCCTTTTACCTGG
TCCACCTCTCCGCTTCTACCGGTGCTCACCTGTATCAGCTGGCCCTGTCGATCTTTGGTTTCATGGC
CACCTTCTCTGCATGGCAAGCATATGGCTGTCCTATAAGATCTCGTGTGTAACCCAGTCCACAGATGCA
GCCGTC

ACGCGTACGCGGCCGCTCGAGCAGAACTCATCTCAGAAGAGGATCTGGCAGCAAATGATATCCTGGATT
ACAAGGATGACGACGATAAGGTTTAA

Protein Sequence: >RC218395 representing NM_181472
Red=Cloning site Green=Tags(s)
MSHGAGLVRTTCSGSALGPGAGAAQPSASPLEGLLDLSYPRTHAALLKVAQMVTLIIAFICVRSLLWTN
YSAYSFEVVTICDLIMILAFYLVHLFRFRVRLTCISWPLSIFGFMATFLCMASIWLSYKISCVTQSTDA
AV

TRTRPLEQKLISEEDLAANDILDYKDDDDKV

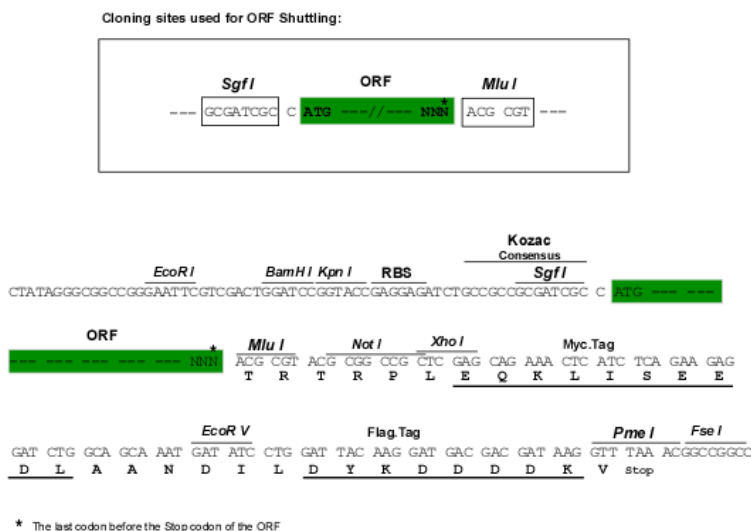
Chromatograms: https://cdn.origene.com/chromatograms/ja1431_g04.zip



[View online »](#)

Restriction Sites: SgfI-MluI

Cloning Scheme:



ACCN: NM_181472

ORF Size: 426 bp

OTI Disclaimer: The molecular sequence of this clone aligns with the gene accession number as a point of reference only. However, individual transcript sequences of the same gene can differ through naturally occurring variations (e.g. polymorphisms), each with its own valid existence. This clone is substantially in agreement with the reference, but a complete review of all prevailing variants is recommended prior to use. [More info](#)

OTI Annotation: This clone was engineered to express the complete ORF with an expression tag. Expression varies depending on the nature of the gene.

Components: The ORF clone is ion-exchange column purified and shipped in a 2D barcoded Matrix tube containing 10ug of transfection-ready, dried plasmid DNA (reconstitute with 100 ul of water).

Reconstitution Method:

1. Centrifuge at 5,000xg for 5min.
2. Carefully open the tube and add 100ul of sterile water to dissolve the DNA.
3. Close the tube and incubate for 10 minutes at room temperature.
4. Briefly vortex the tube and then do a quick spin (less than 5000xg) to concentrate the liquid at the bottom.
5. Store the suspended plasmid at -20°C. The DNA is stable for at least one year from date of shipping when stored at -20°C.

RefSeq: [NM_181472.3](#)

RefSeq Size: 1270 bp

RefSeq ORF: 429 bp

Locus ID: 112616

UniProt ID: [Q96FZ5](#)

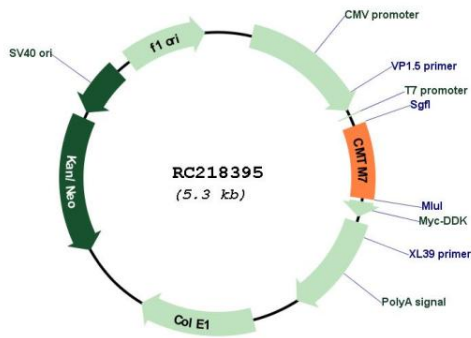
Cytogenetics: 3p22.3

Protein Families: Transmembrane

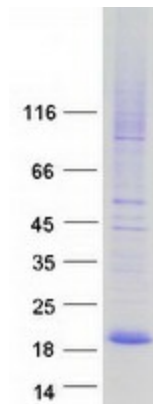
MW: 15.3 kDa

Gene Summary: This gene belongs to the chemokine-like factor gene superfamily, a novel family that is similar to the chemokine and transmembrane 4 superfamilies. This gene is one of several chemokine-like factor genes located in a cluster on chromosome 3. This gene acts as a tumor suppressor that regulates G1/S transition in the cell cycle, and epidermal growth factor receptor/protein kinase B signaling during tumor pathogenesis. Alternative splicing results in multiple transcript variants encoding different isoforms. [provided by RefSeq, Feb 2016]

Product images:



Circular map for RC218395



Coomassie blue staining of purified CMTM7 protein (Cat# [TP318395]). The protein was produced from HEK293T cells transfected with CMTM7 cDNA clone (Cat# RC218395) using MegaTran 2.0 (Cat# [TT210002]).