

## Product datasheet for **RC218394**

### CCDC78 (NM\_173476) Human Tagged ORF Clone

#### Product data:

Product Type:	Expression Plasmids
Product Name:	CCDC78 (NM_173476) Human Tagged ORF Clone
Tag:	Myc-DDK
Symbol:	CCDC78
Synonyms:	C16orf25; coiled-coil domain containing 78; FLJ34512; JFP10; JFP10, C16orf25, FLJ34512, LA16c-444G9.2
Mammalian Cell Selection:	Neomycin
Vector:	pCMV6-Entry (PS100001)
E. coli Selection:	Kanamycin (25 ug/mL)
ORF Nucleotide Sequence:	>RC218394 representing NM_173476 Red=Cloning site Blue=ORF Green=Tags(s)

TTTTGTAATACGACTCACTATAGGGCGGCCGGAATTCGTCGACTGGATCCGGTACCGAGGAGATCTGCC  
GCC**CGATCGCC**

ATGGAGCAGCAGCCACCACAGGCCCCAGGCCTGGACCTCCCTCTCGGCGGTGGAGAATGTGAGTCCTC  
TGGGACTTGCCGCTCCTGCCATGGGGTTGAAGTCTGCCGTTCCCCAAAGGCCAGGAAGGTGCAGGTTCT  
CTGCACCCTGGGCCTAATTTAGCCAGGAGAGGGACTTTTACAGCTCAGCCAGGCAGGGAGGCGGGACTG  
GTGACTGCATGGGAGTGGGGCCACAGCCAGCCTGGGACCCACCTGGGGAATGGTGGCGGTACCTCCCC  
AGGTTGTGCTACGAGCCAAGGACTGGCTGCCAGGAGCTCCTGGGGCACCAGTGTGGGCCACCAGCTT  
GGAAGCAGAGGTCCCACCAGATCTAGCGCTCAATAAGGAGCAGCAGCTGCAGATCTCAAGGAGCTGGTC  
GACATTCAGATCACAAACCACCCTACATGAGCAGCATGAGGCTGAAATCTTCCAGCTGAAGAGTGAGA  
TCCTTCGGCTGGAGAGCCGGTACTGGAGCTGGAGCTGCGAGGAGATGGCACCAGCCAGGCTGTGCACT  
CCCAGTGGAGTCTGACCCAGGCATCCCCGGGCAGCAGCCAAAGAGCTCAGACACAAAGCCAGGTGCC  
GGACACTCTGATGACCACAGATTCAGGTGCAGCCAAAGAACCATGGACCCCGAGAATGAGCAGCACA  
GGCTGGGGAGCGCGTGTGAGTGTGACGCCACCTAGCTCAGGGGAGAGGGCAGCACCAGAGACCCCAAGCCT  
AGGGTCTCATCCAGCCAGCCCTGTGTGCCCCACAGCTGCAGGGGGAAGTGAAGTGGGCGCTGGAGCATCA  
GGAGGCCCGGCAGCAGGCACTGGTGACGCGTGTGTGAGTGGCCATCTCACCTGGGGCCCCATCCTGGAGC  
AGAGAGAACCCCTGATCGTGGCCCTGCTGAGCCTACCCCCGTGTCTTACAGGCAACCCCTGGGCCGCGAG  
CTGCAGGGAGCCCGAGAGGAGGCCAGGGCAGCCGGCAGCGACTGGCCACACAGGCTGTGG

AG**CGGACCG**ACGCGTACGCGGCCGCTCGAGCAGAACTCATCTCAGAAGAGGATCTGGCAGCAAATGATATCC  
TGGATTACAAGGATGACGACGATAAGGTTTAA



[View online »](#)

**Protein Sequence:** >RC218394 representing NM\_173476  
Red=Cloning site Green=Tags(s)

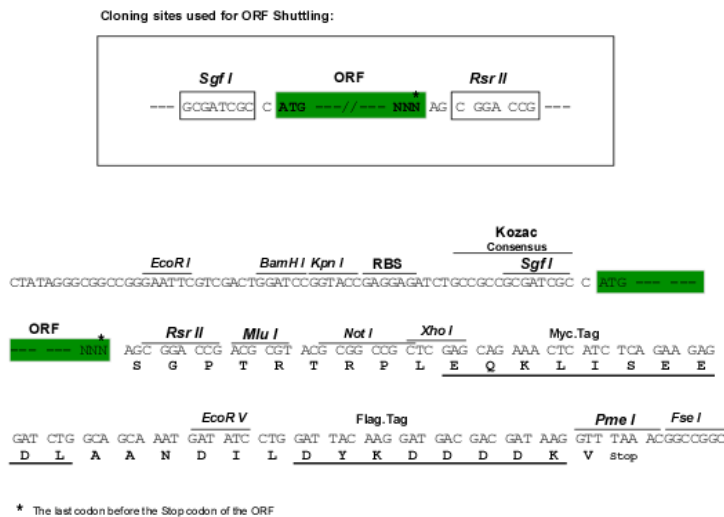
MEHAATTGPRPGPPSRRVENVSPLGLAAPAMGLKSARSPKGQEGAGSCTLGLISARRGFTTAQPGREAGL  
 VTAWEWGHSPAWDPPGEWVAVPPQVVLRAKDWLPGAPGGTAVWATSLEAEVPPDLALNKEQQLQISKELV  
 DIQITTHHLHEQHEAEIFQLKSEILRLESRVLELELRGDGTSQGCAPVVEDPRHPRAAAQELRHKAQVP  
 GHSDDRHFQVQPKNTMDPENEQHRLGSGVSVQPPSSGERAAPETPSLGSHPASPVCPTAAGGSEVGAGAS  
 GGPAAGTDACVSGHLTWGPPILEQREPLIVGLLSLTPVSSGQPWAGSCREPERRRPGQPGSDWPHRLW

SGPTRTRRLEQKLI SEEDLAANDILDYKDDDDKV

**Chromatograms:** [https://cdn.origene.com/chromatograms/mk8053\\_g07.zip](https://cdn.origene.com/chromatograms/mk8053_g07.zip)

**Restriction Sites:** SgfI-RsrII

**Cloning Scheme:**



**ACCN:** NM\_173476

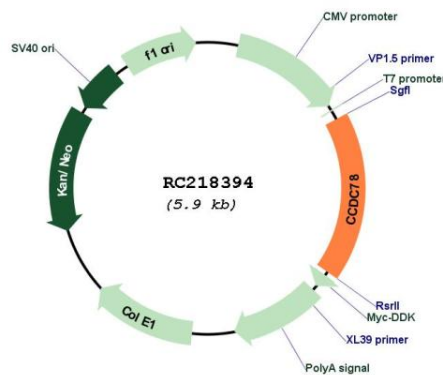
**ORF Size:** 1041 bp

**OTI Disclaimer:** Due to the inherent nature of this plasmid, standard methods to replicate additional amounts of DNA in E. coli are highly likely to result in mutations and/or rearrangements. Therefore, OriGene does not guarantee the capability to replicate this plasmid DNA. Additional amounts of DNA can be purchased from OriGene with batch-specific, full-sequence verification at a reduced cost. Please contact our customer care team at [custsupport@origene.com](mailto:custsupport@origene.com) or by calling 301.340.3188 option 3 for pricing and delivery.

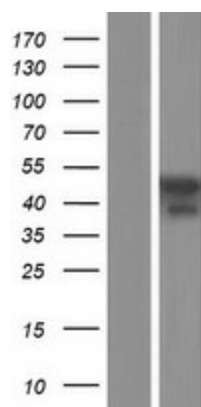
The molecular sequence of this clone aligns with the gene accession number as a point of reference only. However, individual transcript sequences of the same gene can differ through naturally occurring variations (e.g. polymorphisms), each with its own valid existence. This clone is substantially in agreement with the reference, but a complete review of all prevailing variants is recommended prior to use. [More info](#)

- OTI Annotation:** This clone was engineered to express the complete ORF with an expression tag. Expression varies depending on the nature of the gene.
- Components:** The ORF clone is ion-exchange column purified and shipped in a 2D barcoded Matrix tube containing 10ug of transfection-ready, dried plasmid DNA (reconstitute with 100 ul of water).
- Reconstitution Method:**
1. Centrifuge at 5,000xg for 5min.
  2. Carefully open the tube and add 100ul of sterile water to dissolve the DNA.
  3. Close the tube and incubate for 10 minutes at room temperature.
  4. Briefly vortex the tube and then do a quick spin (less than 5000xg) to concentrate the liquid at the bottom.
  5. Store the suspended plasmid at -20°C. The DNA is stable for at least one year from date of shipping when stored at -20°C.
- RefSeq:** [NM\\_173476.2](#), [NP\\_775747.2](#)
- RefSeq Size:** 3454 bp
- RefSeq ORF:** 1043 bp
- Locus ID:** 124093
- Cytogenetics:** 16p13.3
- MW:** 37.1 kDa
- Gene Summary:** The product of this gene contains two coiled-coil domains. The function of this gene is currently unknown. [provided by RefSeq, Sep 2012]

**Product images:**



Circular map for RC218394



Western blot validation of overexpression lysate (Cat# [LY406609]) using anti-DDK antibody (Cat# [TA50011-100]). Left: Cell lysates from untransfected HEK293T cells; Right: Cell lysates from HEK293T cells transfected with RC218394 using transfection reagent MegaTran 2.0 (Cat# [TT210002]).