

Product datasheet for **RC218389**

Glypican 6 (GPC6) (NM_005708) Human Tagged ORF Clone

Product data:

Product Type:	Expression Plasmids
Product Name:	Glypican 6 (GPC6) (NM_005708) Human Tagged ORF Clone
Tag:	Myc-DDK
Symbol:	Glypican 6
Synonyms:	OMIMD1
Mammalian Cell Selection:	Neomycin
Vector:	pCMV6-Entry (PS100001)
E. coli Selection:	Kanamycin (25 ug/mL)



[View online »](#)

ORF Nucleotide Sequence:

>RC218389 representing NM_005708
 Red=Cloning site Blue=ORF Green=Tags(s)

TTTTGTAATACGACTCACTATAGGGCGGCCGGGAATTCGTCGACTGGATCCGGTACCGAGGAGATCTGCC
 GCC**CGGATCGCC**

ATGCCTTCTTGGATCGGGCTGTGATTCTTCCCCTCTTGGGGCTGCTGCTCTCCCTCCCCGCCGGGGCGG
 ATGTGAAGGCTCGGAGCTGCGGAGAGGTCGCCAGGCGTACGGTGCCAAGGGATTAGCCTGGCGGACAT
 CCCCTACCAGGAGATCGCAGGGGAACACTTAAGAATCTGTCTCAGGAATATACATGCTGCACCACAGAA
 ATGGAAGACAAGTTAAGCCAACAAGCAAACTCGAATTTGAAAACCTTGTGAAGAGACAAGCCATTTTG
 TGCGCACCACTTTTGTGTCCAGGCATAAGAAAATTTGACGAATTTTCCGAGAGCTCTGGAGAATGCAGA
 AAAGTCACTAAATGATATGTTTGTACGGACCTATGGCATGCTGTACATGCAGAATTCAGAAGTCTCCAG
 GACCTCTCACAGAGCTGAAAAGGTAACACTGGGGTAAATGTGAATCTGGAGGAAATGCTCAATGACT
 TTTGGGCTCGGCTCCTGGAACGGATGTTTCAGCTGATAAACCCCTCAGTATCACTTCAGTGAAGACTACCT
 GGATGTGTGAGCAAATACACTGACCAGCTCAAGCCATTTGGAGACGTGCCCCGAAAACCTGAAGATTCAG
 GTTACCCGCGCCTTCATTGCTGCCAGGACCTTTGTCCAGGGGCTGACTGTGGGCAGAGAAGTTGCAAAAC
 GAGTTTCCAAGGTCAGCCCAACCCAGGGTGTATCCGTGCCCTCATGAAGATGCTGTACTGCCCATACTG
 TCGGGGGCTTCCCACTGTGAGGCCCTGCAACAACACTACTGTCTCAACGTCATGAAGGGCTGCTTGGCAAA
 CAGGCTGACCTCGACACAGAGTGGAAATCTGTTTATAGATGCAATGCTCTTGGTGGCAGAGCGACTGGAGG
 GGCCATTCAACATTGAGTCGGTCATGGACCCGATAGATGTCAAGATTTCTGAAGCCATTATGAACATGCA
 AGAAAACAGCATGCAAGTGTCTGCAAAGGCTTTTCAGGGATGTGGTCAGCCCAACCTGCTCCAGCCCTC
 AGATCTGCCCGCTCAGCTCCTGAAAATTTAATACACGTTTCAGGCCCTACAATCCTGAGGAAAGACCAA
 CAACCTGTCAGGCACAAGCTTGGACCGGCTGGTCACAGACATAAAAGAGAAATGAAGCTCTCTAAAAA
 GGTCTGGTCAGCATTACCCCTACACTATCTGCAAGGACGAGAGCGTGACAGCGGGCACATCCAACGAGGAG
 GAATGCTGGAACGGGCACAGCAAAGCCAGATACTTGCCTGAGATCATGAATGATGGGCTACCAACCAGA
 TCAACAATCCCGAGGTGGATGTGGACATCACTCGGCCTGACACTTTCATCAGACAGCAGATTATGGCTCT
 CCGTGTGATGACCAACAACTAAAAACGCCTACAATGGCAATGATGTCAATTTCCAGGACACAAGTGTAT
 GAATCCAGTGGCTCAGGGAGTGGCAGTGGTGCATGGATGACGTGTGCCACGGAGTTTGGATTTGTCA
 CCACAGAGGCCCGCAGTGGATCCCGACCGGAGAGAGGTGGACTCTTCTGCAGCCAGCGTGGCCACTC
 CCTGCTCTCTGGTCTCTCACCTGCATTGCTCTGGCACTGCAGAGACTGTGCAGA

ACGCGTACGCGGCCGCTCGAGCAGAAACTCATCTCAGAAGAGGATCTGGCAGCAAATGATATCCTGGATT
 ACAAGGATGACGACGATAAGGTTTAA

Protein Sequence:

>RC218389 representing NM_005708
 Red=Cloning site Green=Tags(s)

MPSWIGAVILPLLGLLLSLPAGADVKARSCGEVQRQAYGAKGFLADIPYQEIAGEHLRIPCQEYTCCTTE
 MEDKLSQQSKLEFENLVEETSHFVRTTFVSRHKKFDEFFRELLENAEKSLNDFVRYTGMLYMQNSEVFQ
 DLFTELKRYTGGNVNLEEMLNDFWARLLERMFQLINPQYHFSELYECVSKYTDQLKPFQDVPRLKLIQ
 VTRAFIAARTFVQGLTVGREVANRVSKVSPTPGCIRALMKMLYCPYCRGLPTVRPCNNYCLNVMKGLAN
 QADLDTEWNLFDAMLLVAERLEGPFNIESVMDPIDVKISEAIMNMQENSMQVSAKVFQCGQPKPAPAL
 RSARSAPENFNRFRPNPEERPTTAAGTSLDRLVTDIKEKLLSKKVWSALPYTICKDESVTAGTSNEE
 ECWNGHSKARYLPEIMNDGLTNQINNPEVDVDITRPDTFIRQQIMALRVMTNKLKNAYNNGNDVNFQDTS
 ESSGSGSGSGCMDVCPTEFEFVTTEAPAVDPDRREVDSSAAQRGHSLLSWSLTCIVLALQRLCR

TRTRPLEQKLISEEDLAANDILDYKDDDDKV

Chromatograms:

https://cdn.origene.com/chromatograms/mk6157_f07.zip

Restriction Sites:

SgfI-MluI

Cloning Scheme:



ACCN: NM_005708

ORF Size: 1665 bp

OTI Disclaimer: The molecular sequence of this clone aligns with the gene accession number as a point of reference only. However, individual transcript sequences of the same gene can differ through naturally occurring variations (e.g. polymorphisms), each with its own valid existence. This clone is substantially in agreement with the reference, but a complete review of all prevailing variants is recommended prior to use. [More info](#)

OTI Annotation: This clone was engineered to express the complete ORF with an expression tag. Expression varies depending on the nature of the gene.

Components: The ORF clone is ion-exchange column purified and shipped in a 2D barcoded Matrix tube containing 10ug of transfection-ready, dried plasmid DNA (reconstitute with 100 ul of water).

Reconstitution Method:

1. Centrifuge at 5,000xg for 5min.
2. Carefully open the tube and add 100ul of sterile water to dissolve the DNA.
3. Close the tube and incubate for 10 minutes at room temperature.
4. Briefly vortex the tube and then do a quick spin (less than 5000xg) to concentrate the liquid at the bottom.
5. Store the suspended plasmid at -20°C. The DNA is stable for at least one year from date of shipping when stored at -20°C.

RefSeq: [NM_005708.5](#)

RefSeq Size: 2760 bp

RefSeq ORF: 1668 bp

Locus ID: 10082

UniProt ID: [Q9Y625](#)

Cytogenetics: 13q31.3-q32.1

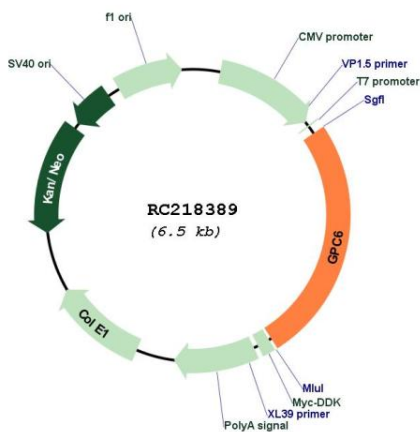
Domains: Glypican

Protein Families: Druggable Genome

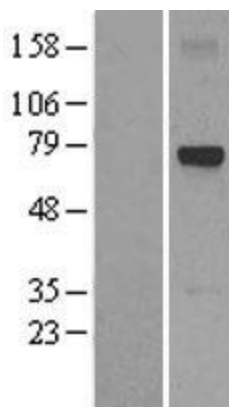
MW: 62.74 kDa

Gene Summary: The glypicans comprise a family of glycosylphosphatidylinositol-anchored heparan sulfate proteoglycans, and they have been implicated in the control of cell growth and cell division. The glypican encoded by this gene is a putative cell surface coreceptor for growth factors, extracellular matrix proteins, proteases and anti-proteases. Mutations in this gene are associated with omodysplasia 1. [provided by RefSeq, Nov 2016]

Product images:



Circular map for RC218389



Western blot validation of overexpression lysate (Cat# [LY401741]) using anti-DDK antibody (Cat# [TA50011-100]). Left: Cell lysates from untransfected HEK293T cells; Right: Cell lysates from HEK293T cells transfected with RC218389 using transfection reagent MegaTran 2.0 (Cat# [TT210002]).