

Product datasheet for **RC218384**

SCYL1 (NM_001048218) Human Tagged ORF Clone

Product data:

Product Type:	Expression Plasmids
Product Name:	SCYL1 (NM_001048218) Human Tagged ORF Clone
Tag:	Myc-DDK
Symbol:	SCYL1
Synonyms:	GKLP; HT019; NKTL; NTKL; P105; SCAR21; TAPK; TEIF; TRAP
Mammalian Cell Selection:	Neomycin
Vector:	pCMV6-Entry (PS100001)
E. coli Selection:	Kanamycin (25 ug/mL)



[View online »](#)

ORF Nucleotide Sequence:

>RC218384 representing NM_001048218
 Red=Cloning site Blue=ORF Green=Tags(s)

TTTTGTAATACGACTCACTATAGGGCGGCCGGGAATTCGTCGACTGGATCCGGTACCGAGGAGATCTGCC
 GCC**CGGATCGCC**

ATGTGGTTCTTTGCCCGGACCCGGTCCGGGACTTTCCGTTTCGAGCTCATCCCGAGCCCCAGAGGGCC
 GCCTGCCCGGGCCCTGGGCCCTGCACCGCGGCCCAAGAAGGCCACAGGCAGCCCGTGTCCATCTTCGT
 CTATGATGTGAAGCCTGGCGCGGAAGAGCAGACCCAGGTGGCCAAAGCTGCCTTCAAGCGTTCAA
 CTACGGCACCCCAACATCCTGGCTTACATCGATGGACTGGAGACAGAAAAATGCCTCCACGTCGTGACAG
 AGGCTGTGACCCCGTTGGGAATATACCTCAAGCGAGAGTGGAGGCTGGTGGCCTGAAGGAGCTGGAGAT
 CTCCTGGGGGCTACACCAGATCGTGAAGCCCTCAGCTTCTGGTCAACGACTGCAGCCTCATCCACAAC
 AATGTCTGCATGGCCGCGTGTTCGTGGACCGAGCTGGCGAGTGAAGCTTGGGGCCTGGACTACATGT
 ATTCGGCCAGGGCAACGGTGGGGGACCTCCCGCAAGGGGATCCCGAGCTTGAGCAGTATGACCCCC
 GGAGTTGGCTGACAGCAGTGGCAGAGTGGTCAGAGAGAAGTGGTCAGCAGACATGTGGCGCTGGGCTGC
 CTATTTGGGAAGTCTTCAATGGGCCCTACCTCGGGCAGCAGCCCTACGCAACCCTGGGAAGATCCCCA
 AAACGCTGGTGGCCCACTTACTGTGAGCTGGTGGGAGCAAACCCCAAGGTGCGTCCCAACCAGCCCGCTT
 CCTGCAGAACTGCCGGGCACCTGGTGGCTTCATGAGCAACCGCTTGTAGAAACCAACCTCTTCTGGAG
 GAGATTGAGATCAAAGAGCCAGCCGAGAAGCAAAAATTCTTCCAGGAGCTGAGCAAGAGCCTGGACGCAT
 TCCCTGAGGATTTCTGTCCGACAAGGTGCTGCCCCAGCTGTGACCGCCTTCGAGTTCCGCAATGCTGG
 GGCCGTTGCTCACGCCCTCTTCAAGGTGGCAAGTTCCTGAGCGCTGAGGAGTATCAGCAGAAGATC
 ATCCCTGTGGTGGTCAAGATGTTCTCATCCACTGACCGGGCCATGCGCATCCGCCTCTGCAGCAGATGG
 AGCAGTTTACCCAGTACCTTGACGAGCCAACAGTCAACACCCAGATCTTCCCCACGTCGTACATGGCTT
 CCTGGACACCAACCCTGCCATCCGGGAGCAGACGGTCAAGTCCATGCTGCTCCTGGCCCCAAGCTGAAC
 GAGGCCAACCTCAATGTGGAGCTGATGAAGCACTTTGCACGGCTACAGGCCAAGGATGAACAGGGCCCCA
 TCCGCTGCAACACCACAGTCTGCCTGGGCAAAATCGGCTCCTACCTCAGTGTAGCACCAGACACAGGGT
 CCTTACCTCTGCCTTCAGCCGAGCCACTAGGGACCCGTTTGCACCGTCCCGGGTTGCGGGTGTCTGGGC
 TTTGCTGCCACCCACAACCTCTACTCAATGAACGACTGTGCCAGAAGATCCTGCCTGTGCTCTGCGGTC
 TCACTGTAGATCCTGAGAAATCCGTGCGAGACCAGGCCTTCAAGGCCATTCGAGCTTCTGTCCAAATT
 GGAGTCTGTGTCGGAGGACCCGACCCAGCTGGAGGAAGTGGAGAAGGATGTCATGCAGCCTCCAGCCCT
 GGCATGGGAGGAGCCGACGCTAGCTGGGCAGGCTGGGCCGTGACCGGGTCTCCTCACTCACCTCCAAGC
 TGATCCGTTGCAACCAACCACTGCCCAACAGAAACCAACATTCCTCCAAAGACCCACGCTGAAGGCCA
 CTGGGAGACGCAGGAGGAGGACAAGGACACAGCAGAGGACAGCAGCACTGCTGACAGATGGGACGACGAA
 GACTGGGGCAGCCTGGAGCAGGAGGCGGAGTCTGTGCTGGCCAGCAGGACGACTGGAGCACCGGGGCC
 AAGTGAGCCGTGCTAGTCAGGTCAGCAACTCCGACCACAAATCCTCCAAATCCCCAGAGTCCGACTGGAG
 CAGCTGGGAAGCTGAGGGCTCCTGGGAACAGGGCTGGCAGGAGCCAAGCTCCCAGGAGCCACCTCCTGAC
 GGTACACGGCTGGCCAGCGAGTAACTGGGGTGGCCAGAGTCCAGCGACAAGGGCGACCCCTTCGCTA
 CCCTGTCTGCACGTCCCAGCACCAGCCGAGGCCAGACTCTTGGGGTGAAGCAACTGGGAGGGCCTCGA
 GACTGACAGTCGACAGGTCAAGGCTGAGCTGGCCGGAAGAAGCGGAGGAGCGGGCGGGAGATGGAG
 GCCAAACGCGCCGAGAGGAAGGTGGCCAAGGGCCCCATGAAGCTGGGAGCCCGGAAGCTGGAC

ACGCGTACGCGGCCGCTCGAGCAGAACTCATCTCAGAAGAGGATCTGGCAGCAATGATATCCTGGATT
 ACAAGGATGACGACGATAAGGTTAA

Protein Sequence: >RC218384 representing NM_001048218
Red=Cloning site Green=Tags(s)

MWFFARDPVRDFPFELIPEPPEGGLPGPWALHRGRKKATGSPVSI FVYDVKPGAEETQVAKAAFKRFKT
LRHPNILAYIDGLETEKCLHVVTEAVTPLGIYLKARVEAGGLKELEISWGLHQIVKALSFLVNDCSLIHN
NVCMAAVFVDRAGEWKLGGLDYMYSAQNGGGPPRKGIPPELEQYDPELADSSGRVVREKWSADMWRLGC
LIWEVFNGPLPRAAALRNPGKIPKTLVPHYCEL VGANPKVRPNPARFLQNCRAPGGFMSNRFVETNLFLE
EIQIKEPAEKQKFFQELSKSLDAFPEDFCRHKVL PQLLTAF EFGNAGAVVLTPLFKVGFLSAE EYQQKI
IPVVVKMFSSTDRAMRIRLLQQMEQFIQYLDEPTVNTQIFPHVVHGFLDTNP AIREQTVKSMLLLAPKLN
EANLNVELMKHFARLQAKDEQGP IRCNTTVCLGKIGSYLSASTRHRVLTSAFSRATRDPFAPSRVAGVLG
FAATHNLYSMNDCAQKILPVL CGLTVDPEKSVRDQAFKAI RSFLSKLESVSEDPTQLEEEKDVHAASSP
GMGGAASWAGWAVTGVSSLT SKLIRSHPTTAPTETNIPQRPTPEGHWETQEEDKDTAEDSSTADRWDDE
DWGSLEQEAE SVLAQQDDWSTGGQVSRASQVSNSDHKSSKSPESDWSSWEAEGSWEQGWQEPSSQEPSPD
GTRLASEYNWGGPESSDKGDPFATLSARPSTQPRPDSWGEDNWEGLETD SRQVKAELARKKREERRREME
AKRAERKVAKGPMKLGARKLD

TRTRPLEQKLISEEDLAANDILDYKDDDDKV

Chromatograms: https://cdn.origene.com/chromatograms/mk8005_c10.zip

Restriction Sites: Sgfl-Mlul

Cloning Scheme:


ACCN: NM_001048218

ORF Size: 2373 bp

OTI Disclaimer: The molecular sequence of this clone aligns with the gene accession number as a point of reference only. However, individual transcript sequences of the same gene can differ through naturally occurring variations (e.g. polymorphisms), each with its own valid existence. This clone is substantially in agreement with the reference, but a complete review of all prevailing variants is recommended prior to use. [More info](#)

OTI Annotation: This clone was engineered to express the complete ORF with an expression tag. Expression varies depending on the nature of the gene.

Components: The ORF clone is ion-exchange column purified and shipped in a 2D barcoded Matrix tube containing 10ug of transfection-ready, dried plasmid DNA (reconstitute with 100 ul of water).

Reconstitution Method:

1. Centrifuge at 5,000xg for 5min.
2. Carefully open the tube and add 100ul of sterile water to dissolve the DNA.
3. Close the tube and incubate for 10 minutes at room temperature.
4. Briefly vortex the tube and then do a quick spin (less than 5000xg) to concentrate the liquid at the bottom.
5. Store the suspended plasmid at -20°C. The DNA is stable for at least one year from date of shipping when stored at -20°C.

RefSeq: [NM_001048218.2](#)

RefSeq Size: 2616 bp

RefSeq ORF: 2376 bp

Locus ID: 57410

UniProt ID: [Q96KG9](#)

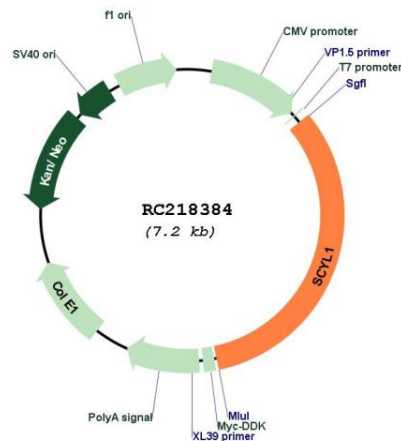
Cytogenetics: 11q13.1

Protein Families: Druggable Genome, Protein Kinase

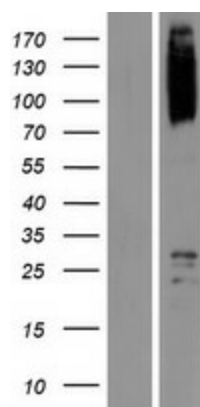
MW: 87.9 kDa

Gene Summary: This gene encodes a transcriptional regulator belonging to the SCYL1-like family of kinase-like proteins. The protein has a divergent N-terminal kinase domain that is thought to be catalytically inactive, and can bind specific DNA sequences through its C-terminal domain. It activates transcription of the telomerase reverse transcriptase and DNA polymerase beta genes. The protein has been localized to the nucleus, and also to the cytoplasm and centrosomes during mitosis. Multiple transcript variants encoding different isoforms have been found for this gene. [provided by RefSeq, Jul 2008]

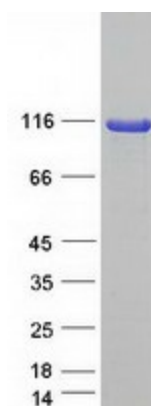
Product images:



Circular map for RC218384



Western blot validation of overexpression lysate (Cat# [LY420785]) using anti-DDK antibody (Cat# [TA50011-100]). Left: Cell lysates from untransfected HEK293T cells; Right: Cell lysates from HEK293T cells transfected with RC218384 using transfection reagent MegaTran 2.0 (Cat# [TT210002]).



Coomassie blue staining of purified SCYL1 protein (Cat# [TP318384]). The protein was produced from HEK293T cells transfected with SCYL1 cDNA clone (Cat# RC218384) using MegaTran 2.0 (Cat# [TT210002]).