

## Product datasheet for RC218379

### C16orf86 (NM\_001012984) Human Tagged ORF Clone

#### Product data:

Product Type:	Expression Plasmids
Product Name:	C16orf86 (NM_001012984) Human Tagged ORF Clone
Tag:	Myc-DDK
Symbol:	C16orf86
Mammalian Cell Selection:	Neomycin
Vector:	pCMV6-Entry (PS100001)
E. coli Selection:	Kanamycin (25 ug/mL)
ORF Nucleotide Sequence:	>RC218379 representing NM_001012984 Red=Cloning site Blue=ORF Green=Tags(s)

TTTTGTAATACGACTCACTATAGGGCGGCCGGGAATTCGTCGACTGGATCCGGTACCGAGGAGATCTGCC  
GCC**CGATCGCC**

ATGGCCTCGGCAGGGGCGGAGAGGCGGCCGGGGTCCAGGAGGCGACGGTTCGTGGGGCAGGGACAGCTCA  
CGGAGGAGCCCGGCAGCGCTCAGACCTCCGAGTGTCCAGTGGCGGGAGACCAGTTCCTGGTGCCTGCCCA  
TGAGGCCCGCGGAACCCAGAGTGAAGACCAGCGCCAGCAGGCGCAGCTTCGGAGTCGGAGCTCCAGGAG  
GAAGGACCCAAGCTGGGGGAGGAGCGGCCAAGCCGATGCCGGGGCGCTAGAGGAGAGAGGCCCCAGGG  
CCGTGGTCTCCATTGTGAGGCCCGTCAATGGTCCAAAGAGAAAGCCTGTCAAGTCTCTCAGCCTCCCGGG  
CCTTCGTGCCATCTTAAGGCTGAAGCTGAGCTGCCACCCAAGCTGCCGCTGCAGGAGGAGGAGCCAGAG  
GACAGCCAGAGTGAAGCTCACCCTCAGCAACAGCACAAGGCAAGGCAAGGCAAGGCAAGGCAAGGCAAGG  
CTCCCGTGTCCACGCTGTGGCCAGCATGGTGTCTGCACCCTTAGAGACATTGAGGCTGGAGCGAAAGGC  
CCAGCGCCTGCGGCCGCTGTACCAGTACGTCAACTATTGCAACCCTGAGCTGAACCAGGCAGGGAAGGGG  
GACGGGGAGGCTGAGGTGGAGGCAGAGGAGCTGGCCCGGTTCCCGAGGAGGAGGTGTGGAGCAAC  
TGCAGGCCTTGTGCCCTTGGCAGGTGAGCTGGGCCAGGCCTCGCTTTGCCCTGTCCAGTCCACTAGT  
GACCCCAACCATGCCCTGGCTCCCTCGGAGAGGAGGCTGGAGAGGAGCCTGGGGGCTTCCAGCTTGT  
GGGTGAGTGACCACAAGGCCGAGGTGGATAAGTCAACCAGGTGGACATCGACAAGATGCTGAGTGTCT  
GCACTGCTCCACTGTCCCGGCTCTCTCCTCAGTACAAG

**ACGCGT**ACGCGGCCGCTCGAGCAGAACTCATCTCAGAAGAGGATCTGGCAGCAAATGATATCCTGGATT  
ACAAGGATGACGACGATAAGGTTTAA



[View online »](#)

**Protein Sequence:** >RC218379 representing NM\_001012984  
Red=Cloning site Green=Tags(s)

MASAGAERRPGVQEATVVGQQLTEEPGSAQTSECPVAGDQFLVPAHEARGTQSEDQRPAGAASESELQE  
 EGPKLGEERPKPHAGALEERGRPVVSIVRPRHGPKRKPVKSLPLGLRAHLKAEALPPKLPLQEEPE  
 DSQSESPSAKQHKKAKRKS LGAPVLHAVASMSAPLET LRLERKAQRLRPL YQVYNYCNPELNQAGKG  
 DGEAEVEAEALAPVPEEGGVEQLQALLPLAGELGPG LALPCPSPLVTP THALAPLGEEAGEEPGGLPSL  
 GVSDHKA EVDKSTQVDIDKMLS VCTAPLVPPLSPQYK

TRTRPLEQKLISEEDLAANDILDYKDDDDKV

**Chromatograms:** [https://cdn.origene.com/chromatograms/mk8021\\_c06.zip](https://cdn.origene.com/chromatograms/mk8021_c06.zip)

**Restriction Sites:** Sgfl-MluI

**Cloning Scheme:**

Cloning sites used for ORF Shuttling:



\* The last codon before the Stop codon of the ORF

**ACCN:** NM\_001012984

**ORF Size:** 951 bp

**OTI Disclaimer:** The molecular sequence of this clone aligns with the gene accession number as a point of reference only. However, individual transcript sequences of the same gene can differ through naturally occurring variations (e.g. polymorphisms), each with its own valid existence. This clone is substantially in agreement with the reference, but a complete review of all prevailing variants is recommended prior to use. [More info](#)

**OTI Annotation:** This clone was engineered to express the complete ORF with an expression tag. Expression varies depending on the nature of the gene.

**Components:** The ORF clone is ion-exchange column purified and shipped in a 2D barcoded Matrix tube containing 10ug of transfection-ready, dried plasmid DNA (reconstitute with 100 ul of water).

**Reconstitution Method:**

1. Centrifuge at 5,000xg for 5min.
2. Carefully open the tube and add 100ul of sterile water to dissolve the DNA.
3. Close the tube and incubate for 10 minutes at room temperature.
4. Briefly vortex the tube and then do a quick spin (less than 5000xg) to concentrate the liquid at the bottom.
5. Store the suspended plasmid at -20°C. The DNA is stable for at least one year from date of shipping when stored at -20°C.

**RefSeq:** [NM\\_001012984.3](#)

**RefSeq Size:** 1287 bp

**RefSeq ORF:** 954 bp

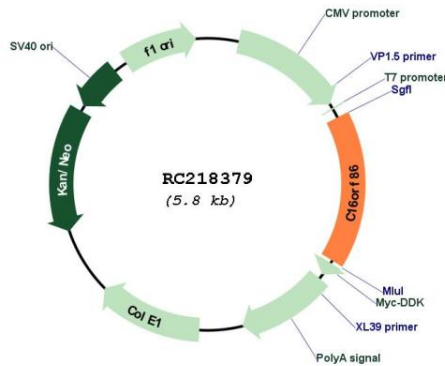
**Locus ID:** 388284

**UniProt ID:** [Q6ZW13](#)

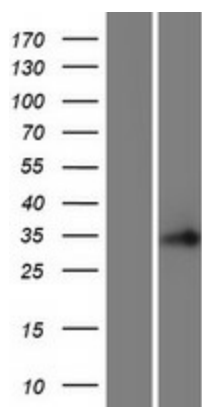
**Cytogenetics:** 16q22.1

**MW:** 33.3 kDa

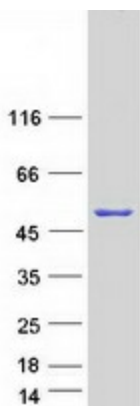
**Product images:**



Circular map for RC218379



Western blot validation of overexpression lysate (Cat# [LY422945]) using anti-DDK antibody (Cat# [TA50011-100]). Left: Cell lysates from untransfected HEK293T cells; Right: Cell lysates from HEK293T cells transfected with RC218379 using transfection reagent MegaTran 2.0 (Cat# [TT210002]).



Coomassie blue staining of purified C16orf86 protein (Cat# [TP318379]). The protein was produced from HEK293T cells transfected with C16orf86 cDNA clone (Cat# RC218379) using MegaTran 2.0 (Cat# [TT210002]).