

Product datasheet for RC218377

Kallikrein 10 (KLK10) (NM_145888) Human Tagged ORF Clone

Product data:

Product Type:	Expression Plasmids
Product Name:	Kallikrein 10 (KLK10) (NM_145888) Human Tagged ORF Clone
Tag:	Myc-DDK
Symbol:	Kallikrein 10
Synonyms:	NES1; PRSSL1
Mammalian Cell Selection:	Neomycin
Vector:	pCMV6-Entry (PS100001)
E. coli Selection:	Kanamycin (25 ug/mL)
ORF Nucleotide Sequence:	>RC218377 ORF sequence Red=Cloning site Blue=ORF Green=Tags(s)

TTTTGTAATACGACTCACTATAGGGCGGCCGGAATTCGTCGACTGGATCCGGTACCGAGGAGATCTGCC
GCC**CGATCGCC**

ATGAGAGCTCCGCACCTCCACCTCTCCGCCCTCTGGCGCCGGGCTCTGGCGAAGCTGCTGCCGCTGC
TGATGGCGCAACTCTGGGCCGAGAGGGCGGCTGCTCCCCAAAACGACACGCGCTTGGACCCGAAGC
CTATGGCGCCCGTGCAGCGCGGCTCGCAGCCCTGGCAGGTCTCGCTTCAACGGCTCTCGTCCAC
TGCGGGGTGCTCTGGTGGACCAGAGTTGGTGTGACGGCCGCGCACTGCGAAACAAGCCACTGTGG
CTCGAGTAGGGGATGACCACCTGCTGCTTCTTCAGGGCGAGCAGCTCCGCCGACGACTCGCTCTGTGT
CCATCCCAAGTACCACAGGGCTCAGGCCCATCTGCCAAGGCGAACGGATGAGCACGATCTCATGTTG
CTAAAGCTGGCCAGGCCGAGTGTGCCGGGGCCCGCTCCGGGCCCTGCAGCTTCCCTACCGCTGTGCTC
AGCCCGGAGACCAGTGCCAGGTTGCTGGCTGGGGCACCACGGCCGCCGAGAGTGAAGTACAACAAGGG
CCTGACCTGCTCCAGCATCACTATCCTGAGCCCTAAAGAGTGTGAGGTCTTACCCTGGCGTGGTCACC
ACAACATGATATGTGCTGGACTGGACCGGGCCAGGACCCTTGCAGAGTACTCTGGAGGCCCTGG
TCTGTGACGAGACCCTCAAGGCATCTCTCGTGGGTGTTTACCCTGTGGCTTGCCAGCATCCAGC
TGCTACACCCAGATCTGCAATACATGTCTGGATCAATAAAGTCATACGCTCCAAC

ACGCGTACGCGGCCGCTCGAGCAGAACTCATCTCAGAAGAGGATCTGGCAGCAAATGATATCCTGGATT
ACAAGGATGACGACGATAAGGTTTAA



[View online »](#)

Protein Sequence: >RC218377 protein sequence
Red=Cloning site Green=Tags(s)

MRAPHLHL SAASGARALAKLLPLLMAQLWAAEAALLPQNDTRL DPEAYGAPCARGSQPWQVSLFNGLSFH
 CAGVLVDQSWVL TAAHCNKPLWARVGDHLLLLQGEQLRRTTRSVVHPKYHQSGPILPRRTDEHDLML
 LKLARPVYPGPRVRLQLPYRCAQPGDQCQVAGWGTTAARRVKYNKGLTCSSITILSPKECFYFPGVVT
 NNMICAGLDRGQDPCQSDSGGPLVCDLTLQGILSWGVPYPCGSAQHPAVYTQICKYMSWINKVIRSN

TRTRPLEQKLISEEDLAANDILDYKDDDDKV

Chromatograms: https://cdn.origene.com/chromatograms/mk6390_f01.zip

Restriction Sites: SgfI-MluI

Cloning Scheme:



ACCN: NM_145888

ORF Size: 828 bp

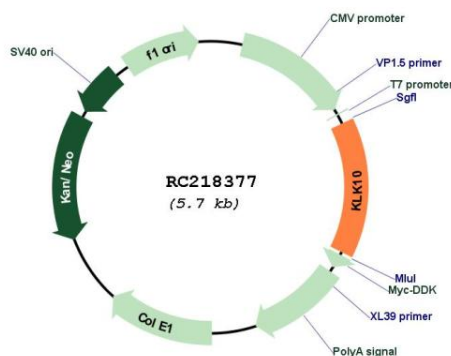
OTI Disclaimer: The molecular sequence of this clone aligns with the gene accession number as a point of reference only. However, individual transcript sequences of the same gene can differ through naturally occurring variations (e.g. polymorphisms), each with its own valid existence. This clone is substantially in agreement with the reference, but a complete review of all prevailing variants is recommended prior to use. [More info](#)

OTI Annotation: This clone was engineered to express the complete ORF with an expression tag. Expression varies depending on the nature of the gene.

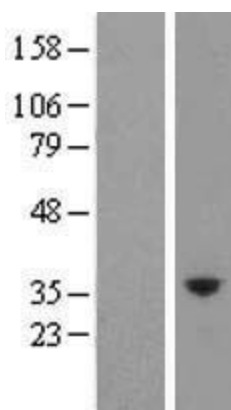
Components: The ORF clone is ion-exchange column purified and shipped in a 2D barcoded Matrix tube containing 10ug of transfection-ready, dried plasmid DNA (reconstitute with 100 ul of water).

Reconstitution Method:	<ol style="list-style-type: none">1. Centrifuge at 5,000xg for 5min.2. Carefully open the tube and add 100ul of sterile water to dissolve the DNA.3. Close the tube and incubate for 10 minutes at room temperature.4. Briefly vortex the tube and then do a quick spin (less than 5000xg) to concentrate the liquid at the bottom.5. Store the suspended plasmid at -20°C. The DNA is stable for at least one year from date of shipping when stored at -20°C.
RefSeq:	NM_145888.3
RefSeq Size:	2985 bp
RefSeq ORF:	831 bp
Locus ID:	5655
UniProt ID:	O43240
Cytogenetics:	19q13.41
Protein Families:	Druggable Genome, Protease, Secreted Protein
MW:	30.1 kDa
Gene Summary:	<p>Kallikreins are a subgroup of serine proteases having diverse physiological functions. Growing evidence suggests that many kallikreins are implicated in carcinogenesis and some have potential as novel cancer and other disease biomarkers. This gene is one of the fifteen kallikrein subfamily members located in a cluster on chromosome 19. Its encoded protein is secreted and may play a role in suppression of tumorigenesis in breast and prostate cancers. Alternate splicing of this gene results in multiple transcript variants encoding the same protein. [provided by RefSeq, Jul 2008]</p>

Product images:



Circular map for RC218377



Western blot validation of overexpression lysate (Cat# [LY407828]) using anti-DDK antibody (Cat# [TA50011-100]). Left: Cell lysates from untransfected HEK293T cells; Right: Cell lysates from HEK293T cells transfected with RC218377 using transfection reagent MegaTran 2.0 (Cat# [TT210002]).