

## Product datasheet for RC218374

### EPHA10 (NM\_001099439) Human Tagged ORF Clone

#### Product data:

Product Type:	Expression Plasmids
Product Name:	EPHA10 (NM_001099439) Human Tagged ORF Clone
Tag:	Myc-DDK
Symbol:	EPHA10
Mammalian Cell Selection:	Neomycin
Vector:	pCMV6-Entry (PS100001)
E. coli Selection:	Kanamycin (25 ug/mL)
ORF Nucleotide Sequence:	>RC218374 representing NM_001099439 Red=Cloning site Blue=ORF Green=Tags(s)

TTTTGTAATACGACTCACTATAGGGCGGCCGGAATTCGTCGACTGGATCCGGTACCGAGGAGATCTGCC  
GCCCGATCGCC

ATGGAGACCTGCGCCGGTCCACACCCGCTGCGCCTCTTCTCTGCCGGATGCAGCTCTGTCTCGCGCTGC  
TTTTGGGACCCTGGCGCCTGGGACCGCCGAGGAAGTTATCCTCTGGATTCCAAAGCCTCCCAGGCCGA  
GCTGGGCTGGACTGCACTGCCAAGTAATGGGTGGGAGGAGATCAGCGCGTGATGAACACGACCGTCCC  
ATCCGCACGTACCAAGTGTGCAATGTGCTGGAGCCCAACCAGACAACCTGGTGCAGACTGGTGGATAA  
CCCGTGGCCGCGGGCAGCGCATCTTCGTGGAACAGCAGTTCACACTCCGTGACTGCAGCAGCATCCCTGG  
CGCCGCGGGTACCTGCAAGGAGACCTTCAACGTCTACTACCTGGAACCTGAGGCCGACTGGGCCGTGGG  
CGTCCCGCCTAGCGCGCAGCCGCCCCGAAAATCGACACGATCGCGGGGACGAGAGCTTCACGCAGG  
GCGACTGGGTGAGCGCAAGATGAAGCTGAACACAGAGGTGCGCGAGATCGGACCGCTCAGCCGGCGGGG  
TTTCCACCTGGCCTTTCAGGACGTGGGCGCATGCGTGGCGCTTGTCTCGGTGCGCGTCTACTACAAGCAG  
TGCCGCGCCACCGTGGGGGCTGGCCACGTTCCAGCCACCGCAGCCGAGAGCGCCTTCTCCACTGG  
TGGAGTGGCCGAACGTGCGTGGCGCACTCGGAAGGGGAGCCTGGCAGCCCCCACGCATGCATGCGG  
CGCCGACGGCAGTGGTGGTGCCTGTGGGCCGCTGCAGCTGCAGCGGGATTCCAGGAGCGTGGTGAC  
TTCTGCGAAGCCTGTCCCCAGGGTTTTACAAGGTGTCCCGCGCGGCCCTCTGCTCACCGTGGCCAG  
AGCACAGCCGGGCCCTGGAACGCCTCCACTTCTGCGTGTGCCAGGACAGCTATGCGCGCTCACCCAC  
CGACCCGCCCTCGGCTTCTGCACCCGGCCGCGTGGCGCCGCGGGACCTGCAGTACAGCTGAGCCG  
TCGCCGCTGGTGTGCGACTGCGCTGGCTGCCCGCGCGACTCGGGAGGCCGCTCGGACGTCACTACT  
CGCTGTGTGCTGCGTGCAGCCGCGAGGGCCCGCGGGGCGCCTGCGAGCCGTGCGGGCCGCGCGTGGC  
CTTCTACCGCGCCAGGCAGGGCTGCGGGAGCGAGCCGCCACGCTGTGCACCTGCGGCCCGCGCGCGC  
TACACCGTGCAGTGGCCGCGCTCAACGGCGTCTCGGGCCGCGCGCCGCGGGAAACCACTACGCGC  
AGGTACCGTCTCACCGGGCCCGGGGCGCCCTGGGAGGAGATGAGATCCGAGGACCGAGTGGAAAC  
CCAGATCGGTGTCCCTGTGCTGGCGGGAGCCATCCCTGCCGAGCCCTGGGGCCATGACACGGAGTAC  
GAGATCCGATACTACGAGAAGGGTCAGAGTGAGCAGACTTACTCATGGTGAAGACAGGGGCGCCACAG  
TCACCGTACCAACCTGAAGCCGCTACCGCTACGTTTTCAGATCCGGGCCGCTTCCCGGGGCCATC



[View online >](#)

CTGGGAGGCCAGAGTTTTAACCCAGCATTGAAGTACAGACCCTGGGGGAGGCTGCCTCAGGGTCCAGG  
 GACCAGAGCCCCGCCATTGTCGTACCCTAGTGACCATCTCGGCCCTCCTCGTCCTGGGCTCCGTGATGA  
 GTGTGCTGGCCATTTGGAGGAGGCCCTGCAGCTATGGCAAAGGAGGAGGGGATGCCCATGATGAAGAGGA  
 GCTGTATTTCCACTTCAAAGTCCAACACGTGCGACATTCCTGGACCCCCAGAGCTGTGGGGACCTGCTG  
 CAGGCTGTGCATCTGTTCCGCAAGGAACCTGGATGCGAAAAGCGTCACGCTGGAGAGGAGCCTTGGAGGAG  
 GGCGGTTTGGGGAGCTGTGCTGTGGCTGCTTGCAGCTCCCCGGTCGCCAGGAGCTGCTCGTAGCCGTGCA  
 TATGCTGAGGGACAGCGCCTCCGACTCACAGAGCTCGGCTTCCCTGGCCGAGGCCCTCACGCTGGGCCAG  
 TTTGACCATAGCCACATCGTGCGGCTGGAGGGCTTGTACCCGAGGAAGCACCTTGATGATTGTACCCG  
 AGTACATGAGCCATGGGGCCCTGGACGGCTTCCCTCAGGCGGCACGAGGGGAGCTGGTGGCTGGGCAACT  
 GATGGGGTTGCTGCCTGGGCTGGCATCAGCCATGAAGTATCTGTGAGAGATGGGCTACGTTACCCGGGGC  
 CTGGCAGCTCGCCATGTGCTGGTGCAGCAGCAGCCTTGTCTGCAAGATCTGCTGGCTTGGGGCGGGCCCC  
 GGGACCGATCAGAGGCTGTCTACACCCTATGAGTGGCCGAGGCCAGCGCTATGGGCCGCTCCCGAGAC  
 ACTTCAGTTTGGCCACTCAGCTCTGCCAGTGACGTGTGGAGCTTCGGCATCATCATGTGGGAGGTGATG  
 GCCTTTGGGGAGCGCCCTACTGGGACATGTCTGGCCAAGACGTGATCAAGGCTGTGGAGGATGGCTTCC  
 GGCTGCCACCCCCAGGAAGTGTCTAACCTTCTGCACCGACTAATGCTCGACTGCTGGCAGAAGGACCC  
 AGGTGAGCGGCCAGGTTCTCCAGATCCACAGCATCCTGAGCAAGATGGTGCAGGACCCAGAGCCCCC  
 AAGTGTGCCCTGACTACCTGTCCAGGCCCTCCACCCCACTAGCGGACCGTGCCTTCTCCACCTTCCCT  
 CCTTTGGCTCTGTGGGCGGTGGCTGGAGGCCCTGGACCTGTGCCGCTACAAGGACAGCTTCGCGGCTGC  
 TGGCTATGGGAGCCTGGAGGCCGTGGCCGAGATGACTGCCAGGACCTGGTGAAGCTAGGCATCTTTTG  
 GCTGAACATCGAGAGGCCCTCCTCAGCGGGATCAGCGCCTGCAGGCACGAGTGTCCAGCTGCAGGGCC  
 AGGGGTGCAGGTG

ACGCGTACGCGGCCGCTCGAGCAGAACTCATCTCAGAAGAGGATCTGGCAGCAAATGATATCCTGGATT  
 ACAAGGATGACGACGATAAGTTTAA

**Protein Sequence:**

>RC218374 representing NM\_001099439  
 Red=Cloning site Green=Tags(s)

METCAGPHPLRFLCRMQLCLALLLPWRPGTAEVILLDSKASQAEWGWTALPSNGWEEISGVDEHDRP  
 IRTYQVCNVLEPNQDNWLQGWISRRGRQIFVELQFTLRDCSSIPGAAGTCKETFNVVYLETEDLGRG  
 RPRLGGSRRPKIDTIAADESFTQDGLGERKMKLNTEVREIGPLSRRGFHLAFQDVGACVALVSVRVYKQ  
 CRATVRGLATFPATAEAFSTLVEVAGTCVAHSEGEPEGSPRPMHCGADGEWLVPVGRSCSAGFQERGD  
 FCEACPPGFYKVSRRPLCSPCPEHSRALENASTFCVCQDSYARSPTDPPSASCTRPPSAPRDLQYSLSR  
 SPLVLRRLRPLPADSGGRSDVTYSLLCLRCGREGPAGACEPCGPRVAFPRQAGLRERAATLLHLRPGAR  
 YTVRVAALNGVSGPAAAAGTTAQTIVSTGPGAPWEDEIRRDRVEPQSVSLSWREPIPAGAPGANDTEY  
 EIRYYEKQSEQTYSMVKTGAPTIVTNLKPATRYVFQIRAASPGPSWEAQSFNPSIEVQTLGEAASGR  
 DQSPAIVVTVTISALLVLGSVMSVLAIWRRPCS YGKGGDAHDEEELYHFVKVPTRRFTLDPQSCGDL  
 QAVHLFAKELDAKSVTLERSLGGGRFGELCCGCLQLPGRQELLVAVHMLRDSASDSQRLGFLAEALTLGQ  
 FDHSHIVRLEGVVTRGSTMIVTEYMSHGALDGLRRHEGQLVAGQLMGLLPGLASAMKYLSEMGYVHRG  
 LAARHVLVSSDLVCKISGFGRGPRDRSEAVYTTMSGRSPALWAAPETLQFGHFSASDVWSFGIIMWEVM  
 AFGERP YWMSGQDVIKAVEDGFRLPPPRNCPNLLHRLMLDCWQKDPGERPRFSQIHSILSKMVQDPEPP  
 KCALTTCPRPPTPLADRAFSTFPSFGSVGAWLEALDLCRYKDSFAAAGYGSLEAVAEMTAQDLVSLGISL  
 AEHREALSGISALQARVLQLQGQGVQV

TRTRPLEQKLISEEDLAANDILDYKDDDDKV

**Chromatograms:**

[https://cdn.origene.com/chromatograms/mk8005\\_h04.zip](https://cdn.origene.com/chromatograms/mk8005_h04.zip)

**Restriction Sites:**

Sgfl-Mlul

**Cloning Scheme:**


**ACCN:** NM\_001099439

**ORF Size:** 3024 bp

**OTI Disclaimer:** The molecular sequence of this clone aligns with the gene accession number as a point of reference only. However, individual transcript sequences of the same gene can differ through naturally occurring variations (e.g. polymorphisms), each with its own valid existence. This clone is substantially in agreement with the reference, but a complete review of all prevailing variants is recommended prior to use. [More info](#)

**OTI Annotation:** This clone was engineered to express the complete ORF with an expression tag. Expression varies depending on the nature of the gene.

**Components:** The ORF clone is ion-exchange column purified and shipped in a 2D barcoded Matrix tube containing 10ug of transfection-ready, dried plasmid DNA (reconstitute with 100 ul of water).

**Reconstitution Method:**

1. Centrifuge at 5,000xg for 5min.
2. Carefully open the tube and add 100ul of sterile water to dissolve the DNA.
3. Close the tube and incubate for 10 minutes at room temperature.
4. Briefly vortex the tube and then do a quick spin (less than 5000xg) to concentrate the liquid at the bottom.
5. Store the suspended plasmid at -20°C. The DNA is stable for at least one year from date of shipping when stored at -20°C.

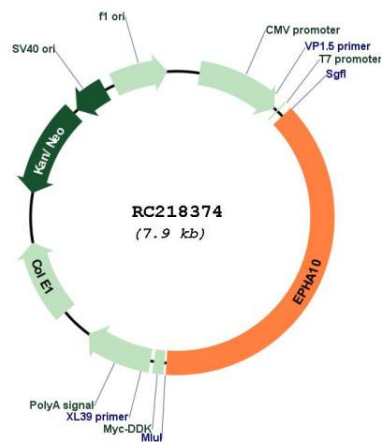
**RefSeq:** [NM\\_001099439.2](#)

**RefSeq Size:** 5526 bp

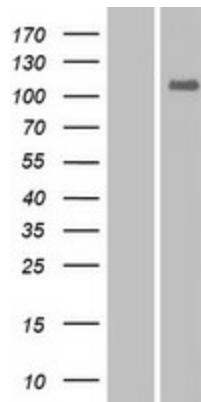
**RefSeq ORF:** 3027 bp

**Locus ID:** 284656  
**UniProt ID:** [Q5JZY3](#)  
**Cytogenetics:** 1p34.3  
**Protein Families:** Druggable Genome, Protein Kinase  
**MW:** 109.5 kDa  
**Gene Summary:** Ephrin receptors, the largest subfamily of receptor tyrosine kinases (RTKs), and their ephrin ligands are important mediators of cell-cell communication regulating cell attachment, shape, and mobility in neuronal and epithelial cells (Aasheim et al., 2005 [PubMed 15777695]). See MIM 179610 for additional background on Eph receptors and ephrins.[supplied by OMIM, Mar 2008]

### Product images:



Circular map for RC218374



Western blot validation of overexpression lysate (Cat# [LY420461]) using anti-DDK antibody (Cat# [TA50011-100]). Left: Cell lysates from untransfected HEK293T cells; Right: Cell lysates from HEK293T cells transfected with RC218374 using transfection reagent MegaTran 2.0 (Cat# [TT210002]).