

Product datasheet for RC218373

DUSP13 (NM_001007273) Human Tagged ORF Clone

Product data:

Product Type:	Expression Plasmids
Product Name:	DUSP13 (NM_001007273) Human Tagged ORF Clone
Tag:	Myc-DDK
Symbol:	DUSP13
Synonyms:	BEDP; DUSP13A; DUSP13B; MDSP; SKRP4; TMDP
Mammalian Cell Selection:	Neomycin
Vector:	pCMV6-Entry (PS100001)
E. coli Selection:	Kanamycin (25 ug/mL)
ORF Nucleotide Sequence:	>RC218373 representing NM_001007273 Red=Cloning site Blue=ORF Green=Tags(s)

TTTTGTAATACGACTCACTATAGGGCGCCGGGAATTCGTCGACTGGATCCGGTACCGAGGAGATCTGCC
GCC**CGATCGCC**

ATGGGGCTCTGCCACTTTGCCACCCTGGCACTGATCCTGCTGGTGTCTGGAGGCTCTGGCCCAGGCGG
ACACACAGAAGATGGTGAAGCCAGCGTGGGGTCGGCCCTAGAGCCTGCTACTCCATCTGGCTCCTCT
GGCGCTACACCCCTCTCAGCCACTGTCTTCAGTCTCCACAGAAACAGCATCAAGTGTGGGAGACAGG
CGGCTGAAAGCCAGCAGCAGCAACTGCCCGTCAGAGAAGTGCACAGCCTGGCCAGATACTCCACAGGA
TGGACTACTGCAGAAGCAGGACCTCCGGAGGCCAAGATCCATGGGGCAGTCCAGGCATCTCCCTACCA
GCCGCCACATTGGCTTCGCTGCAGCGCTTGTGTGGGTCCGTCAGGCTGCCACACTGAACCATATCGAT
GAGGTCTGGCCCAGCCTTCTCTGGGAGATGCGTACGCAGCCCGGACAAGAGCAAGCTGATCCAGCTGG
GAATCACCCACGTTGTGAATGCCGCTGCAGGCAAGTCCAGGTGGACACAGGTGCCAAATCTACCGTGG
AATGTCCCTGGAGTACTATGGCATCGAGGCGGACGACAACCCCTTCTTCGACCTCAGTGTCTACTTTCTG
CCTGTTGCTCGATACATCCGAGCTGCCCTCAGTGTTCCTCAAGGCCGCGTGTGGTACACTGTGCCATGG
GGTAAGCCGCTCTGCCACACTTGCTCTGGCCTTCTCATGATCTGTGAGAACATGACGCTGGTAGAGGC
CATCCAGACGGTGCAGGCCACCGCAATATCTGCCCTAACTCAGGCTTCTCCGGCAGCTCCAGGTTCTG
GACAACCGACTGGGGCGGAGACGGGGCGTTTC

ACGCGTACGCGGCCGCTCGAGCAGAAACTCATCTCAGAAGAGGATCTGGCAGCAAATGATATCCTGGATT
ACAAGGATGACGACGATAAGGTTTAA



[View online »](#)

Protein Sequence: >RC218373 representing NM_001007273
 Red=Cloning site Green=Tags(s)

MGLCHFATLALILLVLEALAQADTQKMVEAQRGVGPRACYSIWLLLAPTPLSHCLQSPQKQHVCGDR
 RLKASSTNCPSEKCTAWARYSHRMDLQKQDLRRPKIHGAVQASPYQPPTLASLQRLWVRQAATLNHID
 EVWPSLFLGDAYAARDKSKLIQLGITHVNAAGKFQVDTGAKFYRMSLEYGIEADNPFDFLSVYFL
 PVARYIRAALSVPQGRVLVHCAMGVSRATLVLAFMLICENMTLVEAIQTVAHRNICPNSGFLRQLQVL
 DNRLGRETGRF

TRTRPLEQKLISEEDLAANDILDYKDDDDKV

Chromatograms: https://cdn.origene.com/chromatograms/mk8049_h10.zip

Restriction Sites: SgfI-MluI

Cloning Scheme:



ACCN: NM_001007273

ORF Size: 873 bp

OTI Disclaimer: The molecular sequence of this clone aligns with the gene accession number as a point of reference only. However, individual transcript sequences of the same gene can differ through naturally occurring variations (e.g. polymorphisms), each with its own valid existence. This clone is substantially in agreement with the reference, but a complete review of all prevailing variants is recommended prior to use. [More info](#)

OTI Annotation: This clone was engineered to express the complete ORF with an expression tag. Expression varies depending on the nature of the gene.

Components: The ORF clone is ion-exchange column purified and shipped in a 2D barcoded Matrix tube containing 10ug of transfection-ready, dried plasmid DNA (reconstitute with 100 ul of water).

Reconstitution Method:

1. Centrifuge at 5,000xg for 5min.
2. Carefully open the tube and add 100ul of sterile water to dissolve the DNA.
3. Close the tube and incubate for 10 minutes at room temperature.
4. Briefly vortex the tube and then do a quick spin (less than 5000xg) to concentrate the liquid at the bottom.
5. Store the suspended plasmid at -20°C. The DNA is stable for at least one year from date of shipping when stored at -20°C.

RefSeq: [NM_001007273.2](#)

RefSeq Size: 1362 bp

RefSeq ORF: 876 bp

Locus ID: 51207

UniProt ID: [Q6B811](#)

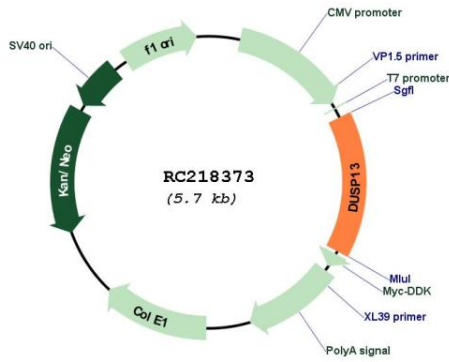
Cytogenetics: 10q22.2

Protein Families: Druggable Genome, Phosphatase

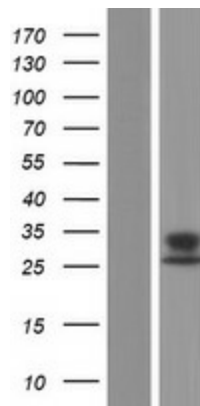
MW: 32.2 kDa

Gene Summary: Members of the protein-tyrosine phosphatase superfamily cooperate with protein kinases to regulate cell proliferation and differentiation. This superfamily is separated into two families based on the substrate that is dephosphorylated. One family, the dual specificity phosphatases (DSPs) acts on both phosphotyrosine and phosphoserine/threonine residues. This gene encodes different but related DSP proteins through the use of non-overlapping open reading frames, alternate splicing, and presumed different transcription promoters. Expression of the distinct proteins from this gene has been found to be tissue specific and the proteins may be involved in postnatal development of specific tissues. A protein encoded by the upstream ORF was found in skeletal muscle, whereas the encoded protein from the downstream ORF was found only in testis. In mouse, a similar pattern of expression was found. Multiple alternatively spliced transcript variants were described, but the full-length sequence of only some were determined. [provided by RefSeq, Jul 2008]

Product images:



Circular map for RC218373



Western blot validation of overexpression lysate (Cat# [LY423482]) using anti-DDK antibody (Cat# [TA50011-100]). Left: Cell lysates from untransfected HEK293T cells; Right: Cell lysates from HEK293T cells transfected with RC218373 using transfection reagent MegaTran 2.0 (Cat# [TT210002]).