

## Product datasheet for **RC218361**

### EXOSC3 (NM\_001002269) Human Tagged ORF Clone

#### Product data:

**Product Type:** Expression Plasmids  
**Product Name:** EXOSC3 (NM\_001002269) Human Tagged ORF Clone  
**Tag:** Myc-DDK  
**Symbol:** EXOSC3  
**Synonyms:** bA3J10.7; CGI-102; hRrp-40; p10; PCH1B; RRP40; Rrp40p  
**Mammalian Cell Selection:** Neomycin  
**Vector:** pCMV6-Entry (PS100001)  
**E. coli Selection:** Kanamycin (25 ug/mL)  
**ORF Nucleotide Sequence:** >RC218361 representing NM\_001002269  
Red=Cloning site Blue=ORF Green=Tags(s)

TTTTGTAATACGACTCACTATAGGGCGGCCGGAATTCGTCGACTGGATCCGGTACCGAGGAGATCTGCC  
GCC**CGATCGCC**

ATGGCCGAACCTGCGTCTGTGCGGGTGAATCTCTCGGGGCAGCAGGGCGCGCTGCACGCACAGTAC  
TAGGTCAGGTGGTCTCCGGGTGAGGAGCTGCTCCTGCCGAACAGGAGGACGCGGAAGGCCCTGGGG  
TGCAGTGGAGCGACCGTTGAGCCTGAATGCTAGAGCGTCTCGGGTGCAGTGTATGCGGTCCGGC  
CTTCGGCGCTGTGGGACCGCTGCTGGTACCAAGTGCAGCGCCCTCCGTCACAAGGAGCCCGCAGTG  
GCAGCGCGCGGTGTTTACTGGTGGACTCTCAGCAGAAGCGGTATGTTCCAGTAAAAGGAGACCATGT  
GATTGGCATAGTGACAGCTAAATCTGGAGATATATTCAAAGTTGATGTTGGAGGGAGTGAGCCAGCTTCT  
TTGCTTACTTGTCAATTTGAAGGTGCAACTAAAAGAAACAGACCAATGTGCAGGCTATTAGCTCCAGAT  
TG

**ACGCGT**ACGCGGCCGCTCGAGCAGAACTCATCTCAGAAGAGGATCTGGCAGCAAATGATATCCTGGATT  
ACAAGGATGACGACGATAAGGTTTAA

**Protein Sequence:** >RC218361 representing NM\_001002269  
Red=Cloning site Green=Tags(s)

MAEPASVAAESLAGSRARAARTVLGQVVLPGEELLLPEQEDAEGPGGAVRPLSLNARACSRVRVCGPG  
LRRCGDRLLVTKCGRRLRHKEPGSGSGGVVWVDSQQKRYVPVKGHDHIVTAKSGDIFKVDVGGSEPAS  
LSYLSFEGATKRNRPNVQAISSRL

**TRTRPLEQKLISEEDLAANDILDYKDDDDKV**

**Chromatograms:** [https://cdn.origene.com/chromatograms/ja1434\\_h07.zip](https://cdn.origene.com/chromatograms/ja1434_h07.zip)



Restriction Sites: SgfI-MluI

Cloning Scheme:



ACCN: NM\_001002269

ORF Size: 492 bp

OTI Disclaimer: The molecular sequence of this clone aligns with the gene accession number as a point of reference only. However, individual transcript sequences of the same gene can differ through naturally occurring variations (e.g. polymorphisms), each with its own valid existence. This clone is substantially in agreement with the reference, but a complete review of all prevailing variants is recommended prior to use. [More info](#)

OTI Annotation: This clone was engineered to express the complete ORF with an expression tag. Expression varies depending on the nature of the gene.

Components: The ORF clone is ion-exchange column purified and shipped in a 2D barcoded Matrix tube containing 10ug of transfection-ready, dried plasmid DNA (reconstitute with 100 ul of water).

Reconstitution Method:

1. Centrifuge at 5,000xg for 5min.
2. Carefully open the tube and add 100ul of sterile water to dissolve the DNA.
3. Close the tube and incubate for 10 minutes at room temperature.
4. Briefly vortex the tube and then do a quick spin (less than 5000xg) to concentrate the liquid at the bottom.
5. Store the suspended plasmid at -20°C. The DNA is stable for at least one year from date of shipping when stored at -20°C.

RefSeq: [NM\\_001002269.2](#), [NP\\_001002269.1](#)

RefSeq Size: 1070 bp

RefSeq ORF: 495 bp

Locus ID: 51010

UniProt ID: [Q9NQ75](#)

**Cytogenetics:** 9p13.2

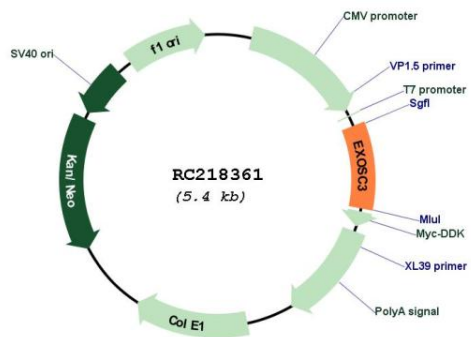
**Protein Families:** Stem cell - Pluripotency

**Protein Pathways:** RNA degradation

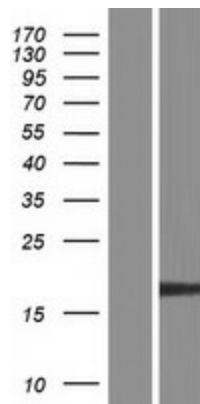
**MW:** 17.1 kDa

**Gene Summary:** This gene encodes a non-catalytic component of the human exosome, a complex with 3'-5' exoribonuclease activity that plays a role in numerous RNA processing and degradation activities. Related pseudogenes of this gene are found on chromosome 19 and 21. Alternatively spliced transcript variants encoding different isoforms have been described. [provided by RefSeq, Jun 2012]

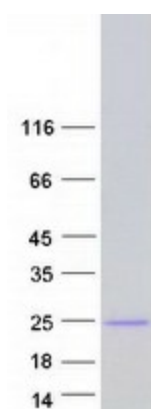
**Product images:**



Circular map for RC218361



Western blot validation of overexpression lysate (Cat# [LY424199]) using anti-DDK antibody (Cat# [TA50011-100]). Left: Cell lysates from untransfected HEK293T cells; Right: Cell lysates from HEK293T cells transfected with RC218361 using transfection reagent MegaTran 2.0 (Cat# [TT210002]).



Coomassie blue staining of purified EXOSC3 protein (Cat# [TP318361]). The protein was produced from HEK293T cells transfected with EXOSC3 cDNA clone (Cat# RC218361) using MegaTran 2.0 (Cat# [TT210002]).