

## Product datasheet for RC218357

### TEX261 (NM\_144582) Human Tagged ORF Clone

#### Product data:

**Product Type:** Expression Plasmids  
**Product Name:** TEX261 (NM\_144582) Human Tagged ORF Clone  
**Tag:** Myc-DDK  
**Symbol:** TEX261  
**Synonyms:** TEG-261  
**Mammalian Cell Selection:** Neomycin  
**Vector:** pCMV6-Entry (PS100001)  
**E. coli Selection:** Kanamycin (25 ug/mL)  
**ORF Nucleotide Sequence:** >RC218357 ORF sequence  
 Red=Cloning site Blue=ORF Green=Tags(s)

TTTTGTAATACGACTCACTATAGGGCGGCCGGAATTCGTCGACTGGATCCGGTACCGAGGAGATCTGCC  
 GCCCGATCGCC

ATGTGGTTCATGTACCTGCTGAGCTGGCTGTCGCTCTTCATCCAGGTGGCCTTCATCAGCTGGCTGTCG  
 CGGCTGGACTCTATTACCTGGCAGAAGTATAGAAGAATACACAGTGGCCACCAGCAGGATCATAAAATA  
 CATGATCTGGTCTCCACCGCTGACTGATTGGCCTCTACGTCTTTGAGCGCTTCCCCACCAGCATGATT  
 GGAGTGGCCTATTCACCAACCTCGTCTACTTTGGCCTCCTCCAGACCTTCCCCTTCATCATGCTGACCT  
 CGCCTAACTTCATCCTGTCGTGGACTAGTGGTGGTGAATCATTACCTAGCATTTCAGTTTTTGCAGA  
 AGAATATTATCCCTTCTCAGAGGTCTGGCCTATTTCACTTTCTGCCTGTGGATAATTCCGTTTGGGTTT  
 TTTGTGCACTTTTCGGCCGGGAGAACGCTGCTGCCCTCTACCATGCAGCCAGGAGATGATGTCGTCTCCA  
 ATTATTTACCAAAGCAAGCGGGGAAACGCTTAGGGATCCTGGTTGTCTTCTCCTTCATCAAAGAGGC  
 CATTCTACCCAGTCGTCAGAAGATATAC

ACGCGTACGCGGCCGCTCGAGCAGAACTCATCTCAGAAGAGGATCTGGCAGCAATGATATCCTGGATT  
 ACAAGGATGACGACGATAAGGTTTAA

**Protein Sequence:** >RC218357 protein sequence  
 Red=Cloning site Green=Tags(s)

MWFMYLLSWLSLFIQVAFITLVAAGLYLAELIEEYTVATSRIIKYMIWFSTAVLIGLYVFERFPTSMI  
 GVGLFTNLVYFGLLQTFPFIMLTSPNFILSCGLVVVNHYLAFQFFAEYYPFSEVLAYFTFCLWIIPFAF  
 FVSLSAGENVLPSTMQPGDDVVSNYFTKGRKRGRLGILVVFSEFIKEAILPSRQKIY

TRTRPLEQKLISEEDLAANDILDYKDDDDKV



[View online »](#)

**Chromatograms:** [https://cdn.origene.com/chromatograms/mk6440\\_h03.zip](https://cdn.origene.com/chromatograms/mk6440_h03.zip)

**Restriction Sites:** SgfI-MluI

**Cloning Scheme:**



**ACCN:** NM\_144582

**ORF Size:** 588 bp

**OTI Disclaimer:** The molecular sequence of this clone aligns with the gene accession number as a point of reference only. However, individual transcript sequences of the same gene can differ through naturally occurring variations (e.g. polymorphisms), each with its own valid existence. This clone is substantially in agreement with the reference, but a complete review of all prevailing variants is recommended prior to use. [More info](#)

**OTI Annotation:** This clone was engineered to express the complete ORF with an expression tag. Expression varies depending on the nature of the gene.

**Components:** The ORF clone is ion-exchange column purified and shipped in a 2D barcoded Matrix tube containing 10ug of transfection-ready, dried plasmid DNA (reconstitute with 100 ul of water).

**Reconstitution Method:**

1. Centrifuge at 5,000xg for 5min.
2. Carefully open the tube and add 100ul of sterile water to dissolve the DNA.
3. Close the tube and incubate for 10 minutes at room temperature.
4. Briefly vortex the tube and then do a quick spin (less than 5000xg) to concentrate the liquid at the bottom.
5. Store the suspended plasmid at -20°C. The DNA is stable for at least one year from date of shipping when stored at -20°C.

**RefSeq:** [NM\\_144582.3](#)

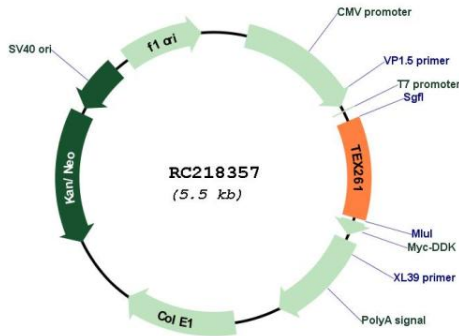
**RefSeq Size:** 3381 bp

**RefSeq ORF:** 591 bp

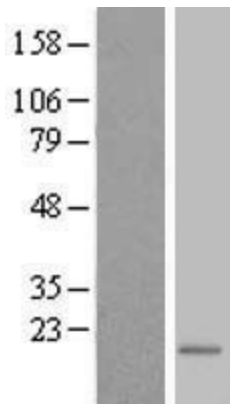
**Locus ID:** 113419

UniProt ID: [Q6UWH6](#)  
 Cytogenetics: 2p13.3  
 Domains: DUF396  
 Protein Families: Transmembrane  
 MW: 22.5 kDa

**Product images:**



Circular map for RC218357



Western blot validation of overexpression lysate (Cat# [LY408290]) using anti-DDK antibody (Cat# [TA50011-100]). Left: Cell lysates from untransfected HEK293T cells; Right: Cell lysates from HEK293T cells transfected with RC218357 using transfection reagent MegaTran 2.0 (Cat# [TT210002]).