

Product datasheet for **RC218356**

ZNF750 (NM_024702) Human Tagged ORF Clone

Product data:

Product Type:	Expression Plasmids
Product Name:	ZNF750 (NM_024702) Human Tagged ORF Clone
Tag:	Myc-DDK
Symbol:	ZNF750
Synonyms:	ZFP750
Mammalian Cell Selection:	Neomycin
Vector:	pCMV6-Entry (PS100001)
E. coli Selection:	Kanamycin (25 ug/mL)



[View online »](#)

ORF Nucleotide Sequence:

>RC218356 ORF sequence
 Red=Cloning site Blue=ORF Green=Tags(s)

TTTTGTAATACGACTCACTATAGGGCGGCCGGAATTCGTCGACTGGATCCGGTACCGAGGAGATCTGCC
 GCC**CGGATCGCC**

ATGAGTCTCTCAAAGAGCGGAAGCCAAAAAGCCACATTACATCCCAGGCCTCCAGGAAAGCCCTTCA
 AGTATAAATGTTTCCAATGTCCCTTTACTTGAATGAGAAGTCACATCTTTTTAATCACATGAAGTATGG
 TCTTTGTA AAAACTCGATTACTTTAGTATCAGAGCAGGATCGAGTTCCTCAAGTGCCTAAATCTAACTCA
 CTAGACCCCAAGCAAACCAACCAGCCCGATGCCACGGCGAAGCCAGCCTCTTCCAAGTCTGTGCAAATG
 GACTCTCTGCCTTCGACTCGAAGCTTCAGCACAGCTCTGCCAGGGAAGACATCAAGGAAAACCTGGAGCT
 GCAAGCCCGGGAAACCCACAGGTGCCTGGGACAGAAGCCAGCCCTCCACAGGGCATCACCTGCAAGAGC
 CCAGCTCCGGAAGCCGCCCTCGGTGCCAGCCTGCTCTGGAAGGCGCAGCTCGGCCTTCTGCATTTGTT
 CAGTCGGCGAGCACAGACTCAAGGGGCCAGACAACGCCGAGGCGCCGAGACACTGGCTTTACACAACCC
 CACTGCCAAGGCCGTGTCTTTCCACACCAAGTCGGCTTCCACACTCCTGGCTACCCCTGGAAAGCCGGC
 TCACCTTTCTCCACCAGAGTTCCACATAAAATCTCATCTACAAAGGGGCTTGGGGCCATTTCCCTT
 ACATGCACCCCAATCCAGAGTACCCGCCTCACTTTTACACAGAGCACGGGCTGGCCACCATCTACTC
 GCCTTACTGTGGTGGGAGCTCGCCTGAGTGTGACGCACCCCTGCTGTGAGTCTACGGAACCCAAAGC
 CCGAGACTTCTCGCTCACCCGGGGCCGATCCCTAAGCACCTGGCTCCATCTCCAGCCACATACGATC
 ACTACAGGTTTTTCCAGCAATATCCCTCTAACCTGCCGATTCTTACGGATTTTACAGGCCAGAGTCTGC
 ATTTTCTCTATGGTCTCAGACTCCCACCTGTACTGGCCTCACCCGAGATCAGAGCTCTCACCTGCTT
 GAAGAAGCCACCTGGTCTATCCAGCCTCGAGTCTTCCAGGTTAAACCTTTCGGACCCCAACAGAAAAC
 AGTCCGAGTTCGAAAGTCCAATTCTGAGGCTAAAGACTCTCCAAGGCTGGGCAGAGACACGGAAGG
 GTCCAAAATGAGCCCCCGCAGGGAGTGCAGCCACGGGCTCCCCAGGGAGGCCGAGCCCCACCGACTTC
 ATGCAGACGAGCCAGACCTGCGAAGGCCTGTACGACCTCTCCAACAAGGCAGCCTCCAGGCCACTGGGAA
 GACTCTACCCGCCAGAGCAAAGCCTCACAGCCTTCAGGCCTGTTAAGAAAAGCACAGAATGCCTACTCTGC
 CCAGGCTGCTGAGACCACAGCAGAGTCTCCAGTAAGCCTCAATGTTGTGAACGGAGACCCTCCTGCTCCG
 ACCGGAAGCGCTCTCTCGTCTCGGAGGCCGCGCCTTCCAGTCCGGACGACAGCTCCGGGATGGGCCCC
 TCAACCTCTCAAGAAATCAGAGATAAACCTGGCAGCCACCCACGAACCCACGTACCAAGGCAGCCCCCA
 GCGGAAACCGCCAGCTTCTCAGAGCTGCAGGACCTTCCACTCAATCTCTCGGTGAAGGACCCTGTAAC
 ACCCAGGCTCCGAGGCCCGCCTTCCCCGGTCGACCACGAGCTGCGGAACCTGCTGCTGCTGTTCCACAGA
 AGACTGGGACAGAAGTTCTGAGGATGGGCCACGCCACCTGAGACCAAGCCAGGCAGCCTCGACGGTGA
 CGGGGCCCCACCCACAGGCCCGGCGAGGAGGCTCCAGACGCATGCGCGGTGGACAGCAGCAGGAGCAG
 AAGCAGACGGCAGCCGTGGCCCTGTGCCAGCTGGCGGCCACAGCCCCAGGAACATCCGGGTGGGCGATG
 GGGATGCTGCGGCCCGGAACCTGCCTGCCGGCAAGACACACCCACACTGAGCTCCATGGAGAGCCAAGA
 GGCCAGTGTGACCTCAGACCCAAAGGACAAAAGAGGACAAGTCTAAGGGATGCTGGAAAATCCCAGCAA
 GGAGCTAAGAAGGCGAAGCTGCAGGACACGGCCAGAGTGTTCACACTACGAAGGAGGGCCCGGTGTCC

ACGCGTACGCGGCCGCTCGAGCAGAACTCATCTCAGAAGAGGATCTGGCAGCAAATGATATCCTGGATT
 ACAAGGATGACGACGATAAGGTTTAA

Protein Sequence: >RC218356 protein sequence
Red=Cloning site Green=Tags(s)

```
MSLLKERKPKPHYIPRPPGKPFKYKCFQCPFTCNEKSHLFNHMKYGLCKNSITLVSEQDRVPKCPKSNS
LDPKQTNQPDATAKPASSKSVANGLSAFDSKLQHSSAREDIKENLELQARGTHRCLGQKPALHRASPCKS
PAPEAALGAQPALEGAARPSAFVVPVGEHRLKGPDNAEAPETLALHNPTAKAVSFHTKSAFHTPGYPWKAG
SPFLPPEFPHKISSTKGLGAI SPYMHPTIPEYPPHFYTEHGLATIYSPYLLAGSSPECDAPLLSVYGTQD
PRHFLPHPGPIPKHLAPSPATYDHYRFFQYPSNLPYGYFYPESAFSSYGLRLLPPVTGLTRDQSSHLL
EEATLVYPASSPSRLNPSDPNRKHVEFESPIPEAKDSSKAGQRDTEGSKMSPRAGSAATGSPGRPSPTDF
MQTSQTCEGLYDL SNKAASSALGRLYPPEQSLTAFRPVKKSTECLPAQAAETTAESPVSLNVVNGDPPAP
TGSASLVSEAAPSSPDDSSGMGPLNLSKKSEINLAATHEPTYQGSPAETASFSELQDLPLNLSVKDPCN
TQAPRPAFPGRPRAAEPAAAVPQKTGTEGSEDGSPHPETKPGSLDGDGAPPTGPGEAAPDACAVDSSEEQ
KQTAVALCQLAAYS PRNIRVGDGDAAPACRQDTPTLSSMESQEAQCDLRPKGQKRTSLRDAGKSQQ
GAKKAKLQD TARVFTLRRRARVS
```

TRTRPLEQKLI SEEDLAANDILDYKDDDDKV

Chromatograms: https://cdn.origene.com/chromatograms/mk6560_b12.zip

Restriction Sites: Sgfl-MluI

Cloning Scheme:

Cloning sites used for ORF Shuttling:



* The last codon before the Stop codon of the ORF

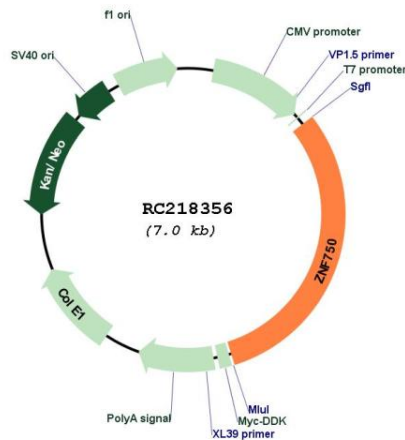
ACCN: NM_024702

ORF Size: 2169 bp

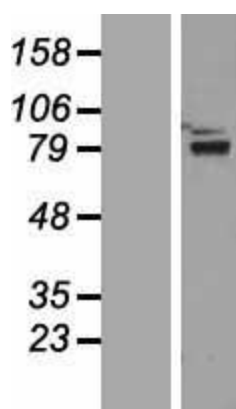
OTI Disclaimer: The molecular sequence of this clone aligns with the gene accession number as a point of reference only. However, individual transcript sequences of the same gene can differ through naturally occurring variations (e.g. polymorphisms), each with its own valid existence. This clone is substantially in agreement with the reference, but a complete review of all prevailing variants is recommended prior to use. [More info](#)

OTI Annotation: This clone was engineered to express the complete ORF with an expression tag. Expression varies depending on the nature of the gene.

Components:	The ORF clone is ion-exchange column purified and shipped in a 2D barcoded Matrix tube containing 10ug of transfection-ready, dried plasmid DNA (reconstitute with 100 ul of water).
Reconstitution Method:	<ol style="list-style-type: none"> 1. Centrifuge at 5,000xg for 5min. 2. Carefully open the tube and add 100ul of sterile water to dissolve the DNA. 3. Close the tube and incubate for 10 minutes at room temperature. 4. Briefly vortex the tube and then do a quick spin (less than 5000xg) to concentrate the liquid at the bottom. 5. Store the suspended plasmid at -20°C. The DNA is stable for at least one year from date of shipping when stored at -20°C.
RefSeq:	<u>NM_024702.3</u>
RefSeq Size:	3218 bp
RefSeq ORF:	2172 bp
Locus ID:	79755
UniProt ID:	<u>Q32MQ0</u>
Cytogenetics:	17q25.3
Domains:	zf-C2H2
MW:	77.4 kDa
Gene Summary:	This gene encodes a protein with a nuclear localization site and a C2H2 zinc finger domain. Mutations in this gene have been associated with seborrhea-like dermatitis with psoriasiform elements. [provided by RefSeq, Jul 2008]

Product images:


Circular map for RC218356



Western blot validation of overexpression lysate (Cat# [LY411159]) using anti-DDK antibody (Cat# [TA50011-100]). Left: Cell lysates from untransfected HEK293T cells; Right: Cell lysates from HEK293T cells transfected with RC218356 using transfection reagent MegaTran 2.0 (Cat# [TT210002]).