

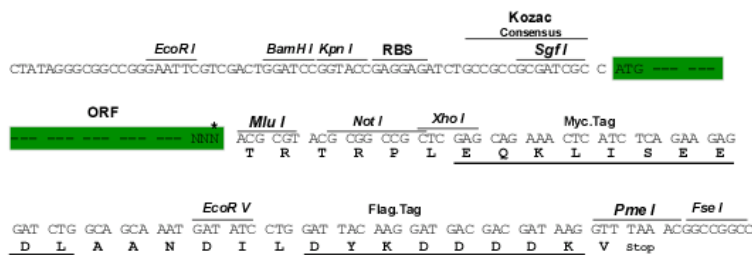
Product datasheet for RC218355

Nucleostemin (GNL3) (NM_206825) Human Tagged ORF Clone

Product data:

Product Type:	Expression Plasmids
Product Name:	Nucleostemin (GNL3) (NM_206825) Human Tagged ORF Clone
Tag:	Myc-DDK
Symbol:	Nucleostemin
Synonyms:	C77032; E2IG3; NNP47; NS
Mammalian Cell Selection:	Neomycin
Vector:	pCMV6-Entry (PS100001)
E. coli Selection:	Kanamycin (25 ug/mL)
Chromatograms:	https://cdn.origene.com/chromatograms/mk6276_f06.zip
Restriction Sites:	SgfI-MluI
Cloning Scheme:	

Cloning sites used for ORF Shuttling:



* The last codon before the Stop codon of the ORF

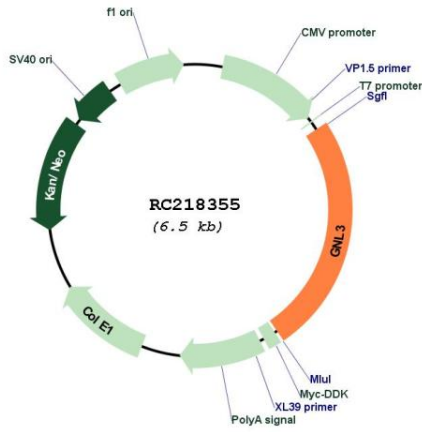
ACCN:	NM_206825
ORF Size:	1611 bp



[View online >](#)

OTI Disclaimer:	The molecular sequence of this clone aligns with the gene accession number as a point of reference only. However, individual transcript sequences of the same gene can differ through naturally occurring variations (e.g. polymorphisms), each with its own valid existence. This clone is substantially in agreement with the reference, but a complete review of all prevailing variants is recommended prior to use. More info
OTI Annotation:	This clone was engineered to express the complete ORF with an expression tag. Expression varies depending on the nature of the gene.
Components:	The ORF clone is ion-exchange column purified and shipped in a 2D barcoded Matrix tube containing 10ug of transfection-ready, dried plasmid DNA (reconstitute with 100 ul of water).
Reconstitution Method:	<ol style="list-style-type: none">1. Centrifuge at 5,000xg for 5min.2. Carefully open the tube and add 100ul of sterile water to dissolve the DNA.3. Close the tube and incubate for 10 minutes at room temperature.4. Briefly vortex the tube and then do a quick spin (less than 5000xg) to concentrate the liquid at the bottom.5. Store the suspended plasmid at -20°C. The DNA is stable for at least one year from date of shipping when stored at -20°C.
RefSeq:	NM_206825.1 , NP_996561.1
RefSeq Size:	2159 bp
RefSeq ORF:	1614 bp
Locus ID:	26354
UniProt ID:	Q9BVP2
Cytogenetics:	3p21.1
Protein Families:	ES Cell Differentiation/IPS, Stem cell - Pluripotency
MW:	60.4 kDa
Gene Summary:	The protein encoded by this gene may interact with p53 and may be involved in tumorigenesis. The encoded protein also appears to be important for stem cell proliferation. This protein is found in both the nucleus and nucleolus. Three transcript variants encoding two different isoforms have been found for this gene. [provided by RefSeq, Nov 2010]

Product images:



Circular map for RC218355