

Product datasheet for **RC218335**

USH1C (NM_153676) Human Tagged ORF Clone

Product data:

Product Type:	Expression Plasmids
Product Name:	USH1C (NM_153676) Human Tagged ORF Clone
Tag:	Myc-DDK
Symbol:	USH1C
Synonyms:	AIE-75; DFNB18; DFNB18A; NY-CO-37; NY-CO-38; PDZ-45; PDZ-73; PDZ-73/NY-CO-38; PDZ73; PDZD7C; ush1cpst
Mammalian Cell Selection:	Neomycin
Vector:	pCMV6-Entry (PS100001)
E. coli Selection:	Kanamycin (25 ug/mL)



[View online »](#)

ORF Nucleotide Sequence:

>RC218335 representing NM_153676
 Red=Cloning site Blue=ORF Green=Tags(s)

TTTTGTAATACGACTCACTATAGGGCGGCCGGAATTCGTCGACTGGATCCGGTACCGAGGAGATCTGCC
 GCC**CGGATCGCC**

ATGGACCGAAAAGTGGCCCGAGAATTCGGCATAAAGTGGATTTTCTGATTGAAAATGATGCAGAGAAGG
 ACTATCTCTATGATGTGCTGCGAATGTACCACCAGACCATGGACGTGGCCGTGCTCGTGGGAGACCTGAA
 GCTGGTCATCAATGAACCCAGCCGCTCTGCCTCTGTTTGTATGCCATTTCGGCCGCTGATCCCACTGAAGCAC
 CAGGTGGAATATGATCAGCTGACCCCCGGCGCTCCAGGAAGCTGAAGGAGGTGCGTCTGGACCGTCTGC
 ACCCCGAAGCCCTCGGCCTGAGTGTGCGTGGTGGCCTGGAGTTTGGCTGTGGGCTCTTCACTCCCACCT
 CATCAAAGGGCGTCAGGCAGACAGCGTCGGGCTCCAGGTAGGGGACGAGATCGTCCGGATCAATGGATAT
 TCCATCTCCTCTGTACCCATGAGGAGGTCAACCTCATTGAAACCAAGAAAAGTGTGTCCATCAAAG
 TGAGACACATCGCCTGATCCCCGTGAAAAGCTCTCTGTATGAGCCCTCACTTGGCAGTATGTGGATCA
 GTTTGTGTCGGAATCTGGGGCGTGCAGGCGAGCTGGGCTCCCCTGAAAATCGGGAAAACAAGGAGAAG
 AAGGTCTTCATCAGCCTGGTAGGCTCCCGAGGCCCTGGCTGCAGCATTCAGCGGCCCCATCCAGAAGC
 CTGGCATCTTTATCAGCCATGTGAAACCTGGCTCCCTGTCTGCTGAGGTGGGATTGGAGATAGGGGACCA
 GATTGTGGAAGTCAATGGCGTCGACTTCTTAACCTGGATCACAAGGAGGCTGTAATGTGCTGAAGAGT
 AGCCCGACGCTGACCATCTCATTGTAGCTGCAGCTGGCCGGGAGCTGTTTATGACAGACCCGGGAGCGGC
 TGGCAGAGGCGCGGCAGCGTGCAGCTGCAGCGCAGGAGCTTCTCATGCAGAAGCGGCTGGCGATGGAGTC
 CAACAAGATCTCCAGGAGCAGCAGGAGATGGAGCGGCAAGGAGAAAAGAAATTGCCAGAAGGCAGCA
 GAGGAAAATGAGAGATACCGGAAGGAGATGGAACAGATTGTAGAGGAGGAAGAGAAGTTTAAAGAAGCAAT
 GGGAAGAAGACTGGGGCTCAAAGGAACAGCTACTTTCCTAAAACCATCACTGCTGAGGTACCCAGT
 ACCCCTTCGCAAGCCAAAGTCTTTTGGATGGTTTTATCGTTACGATGGCAAATTCCTCAACCATCCGGAAG
 AAAGGAAAAGATAAGAAGAAAGCCAAGTATGGCAGCCTGCAGGACTTGAGAAAAGAATAAGAAAGAACTGG
 AGTTTGTAGCAAAAGCTTTACAAAGAGAAAAGAGAAATGCTGGAGAAGGAAAAGCAGCTAAAGATCAACCG
 GCTGGCCAGGAGGTGTCTGAGACAGAGCGGGAAGACCTTGAAGAATCGGAAAAGATTCAATATTGGGTG
 GAGAGGCTCTGTCAAACGCGCCTCGAGCAGATTTCTCTGCTGATAATGAGATTTAGAGATGACCACAG
 GGCCCCCGCTCCCCGCTTCTGTGTCTCCCCTGGCCCCACCCTTGAGACGCTTCGAGCGGACTGCA
 CCTGCACACCACTGACCTGGACGACATCCCTTTGGACATGTTCTACTATCCCCCAAGACTCCCTCTGCC
 TTGCCTGTGATGCCCCACCTCCACCCTCCAACCCACCCACAAGTCCCAGCGCCCCCTGTCTTCCCT
 TATCTGGCCATGTGAGCGCCTCATCTCTCCATGGGTGCAGCGCACTCCACCCCCATTCATCCCTCC
 CCCGCCATCCGTTCCACCCAAGACCTCACTCCCACCCGCCCCTGCCCCTCGGCGCTGGAAGAAGCACTG
 AGCAACCATCCCTTCCGCACTGGGGACACAGGCAATCCAGTGGAGGACTGGGAGGCAAAGAACCACAGTG
 GGAAGCCCACTAACTCCCTGTCCCTGAACAGAGCTTCCACCCACCCCAAGACATTTTGCCCAAGCCC
 ACAGCCTCCACGAGGCCCTGGCGTGTCCACCATCTCAAACCTGTGATGGTCCACCAGGAGCCCAATTTT
 ATCTACAGGCCAGCTGTGAAATCTGAAGTTCTGCCACAGGAGATGTTGAAGAGGATGGTGGTTTATCAGA
 CAGCATTGAGCAAGATTTCCGGAATATGAGGAAGGCTTTGACCCCTACTCTATGTTACCCCCAGAGCA
 GATCATGGGGAAGGATGTCCGGCTCCTACGCATCAAGAAGGAGGGATCCTTAGACCTGGCCCTGGAAGGC
 GGTGTGGACTCCCCATTGGGAAGGTGGTCTTTCTGCTGTGTATGAGCGGGGAGCTGCTGAGCGGCAATG
 GTGGCATTGTGAAAGGGGACGAGATCATGGCAATCAACGCAAGATTGTGACAGACTACACCCTGGCTGA
 GGCTGAGGCTGCCTGCAGAAGGCTGGAATCAGGGCGGGGACTGGATCGACCTTGTGGTTGCCGTCTGC
 CCCCCAAGGAGTATGACGATGAGCTAGCTTCTTCCCTCCTCCGTAGCTGAAAGCCCCCAACCGTCC
 GAAAGCTCCTTGAAGACCGTGTGCCGTGCACAGACAGGTTTCTCCTGAGCTGGAGCCACGGACCT
 TCTTCTGAAGTCCAAAAGGGGAAACCAATTACCGT

ACGCGTACGCGGCCGCTCGAGCAGAAAACCTCATCTCAGAAGAGGATCTGGCAGCAAATGATATCCTGGATT
 ACAAGGATGACGACGATAAGGTTTAA

Protein Sequence: >RC218335 representing NM_153676
 Red=Cloning site Green=Tags(s)

MDRKVAREFRHKVDFLIENDAEKDYLYDVL RMYHQ TMDVAVLVGDLKLVINEPSRLPLFDAIRPLIPLKH
 QVEYDQLTPRRSRKLKEVRLDRLHPEGLGLSVRGGLEFGCGLFISHLIKGGQADSVGLQVGD EIVRINGY
 SISSCTHEEVINLIRTKKTVSIKVRHIGLIPVKSSPDEPLTWQYVDQFVSESGGVRGSLGSPGNRENKEK
 KVFI SLVGSRGLGCSISSGPIQKPGIFISHVKPGSLSAEVGLEIGDQIVEVNGVDFSNLDHKEAVNVLKS
 SRSLTISIVAAAGREL FMTDRERLAEARQRELQRQELLMQKRLAMESNKILQEQQEMERQRKEIAQKAA
 EENERYRKEMEQIVEEEEKFKKQWEEDWGSKEQLLLPKTITA EVHPVPLRKP KSF GWFYRYDGKFP TIRK
 KGKDKKKAKYGS LQDLRKNKKELEFEQKLYKEKEEMLEKEKQLKINRLAQEVSETEREDLEESEKIQYWV
 ERLCQTRLEQISSADNEISEMTTGPPPPPSVSPLAPPLRRFAGGLHLHTTDLDDIPLDMFYPPKTPSA
 LPVMPHPPPSNPPHKVPAPPVPLPSGHVSASSSPWVQRTPPPPIPPPPSVPTQDLTPTRPLPSALEEAL
 SNHPFRTGDTGNPVEDWEAKNHSGKPTNSPVPEQSFPTPKTF CSPQP PRPGVSTISKPMVMHQEPNF
 IYRPAVKSEVLPQEMLRM VVYQTAFRQDFRKYEEGFDPYSMFTPEQIMGKDVRLLRIKKEGSLDLALEG
 GVDSPIGKVVVS AVYERGAERHGGIVK GDEIMAIN GKIVTDYTLAEAEALQKAWNQG GDWIDL VVAVC
 PPKEYDDELASLPSSVAESPQPV RKLLEDRAAVHRHGFL LQLEPTD LLLSKRGNQIHR

TRTRPLEQKLISEEDLAANDILDYKDDDDKV

Chromatograms: https://cdn.origene.com/chromatograms/mk6676_c11.zip

Restriction Sites: SgfI-MluI

Cloning Scheme:

Cloning sites used for ORF Shuttling:



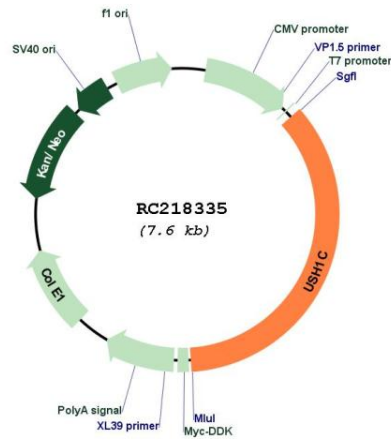
* The last codon before the Stop codon of the ORF

ACCN: NM_153676

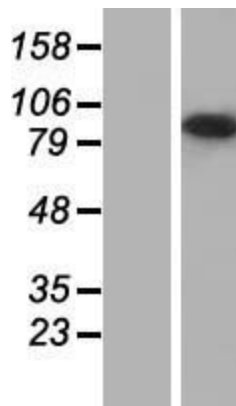
ORF Size: 2697 bp

OTI Disclaimer:	The molecular sequence of this clone aligns with the gene accession number as a point of reference only. However, individual transcript sequences of the same gene can differ through naturally occurring variations (e.g. polymorphisms), each with its own valid existence. This clone is substantially in agreement with the reference, but a complete review of all prevailing variants is recommended prior to use. More info
OTI Annotation:	This clone was engineered to express the complete ORF with an expression tag. Expression varies depending on the nature of the gene.
Components:	The ORF clone is ion-exchange column purified and shipped in a 2D barcoded Matrix tube containing 10ug of transfection-ready, dried plasmid DNA (reconstitute with 100 ul of water).
Reconstitution Method:	<ol style="list-style-type: none">1. Centrifuge at 5,000xg for 5min.2. Carefully open the tube and add 100ul of sterile water to dissolve the DNA.3. Close the tube and incubate for 10 minutes at room temperature.4. Briefly vortex the tube and then do a quick spin (less than 5000xg) to concentrate the liquid at the bottom.5. Store the suspended plasmid at -20°C. The DNA is stable for at least one year from date of shipping when stored at -20°C.
Note:	Plasmids are not sterile. For experiments where strict sterility is required, filtration with 0.22um filter is required.
RefSeq:	NM_153676.4
RefSeq Size:	3250 bp
RefSeq ORF:	2700 bp
Locus ID:	10083
UniProt ID:	Q9Y6N9
Cytogenetics:	11p15.1
MW:	101.2 kDa
Gene Summary:	This gene encodes a scaffold protein that functions in the assembly of Usher protein complexes. The protein contains PDZ domains, a coiled-coil region with a bipartite nuclear localization signal and a PEST degradation sequence. Defects in this gene are the cause of Usher syndrome type 1C and non-syndromic sensorineural deafness autosomal recessive type 18. Multiple transcript variants encoding different isoforms have been found for this gene. [provided by RefSeq, Mar 2009]

Product images:



Circular map for RC218335



Western blot validation of overexpression lysate (Cat# [LY407006]) using anti-DDK antibody (Cat# [TA50011-100]). Left: Cell lysates from untransfected HEK293T cells; Right: Cell lysates from HEK293T cells transfected with RC218335 using transfection reagent MegaTran 2.0 (Cat# [TT210002]).