

Product datasheet for **RC218329**

KRT74 (NM_175053) Human Tagged ORF Clone

Product data:

Product Type:	Expression Plasmids
Product Name:	KRT74 (NM_175053) Human Tagged ORF Clone
Tag:	Myc-DDK
Symbol:	KRT74
Synonyms:	ADWH; HTSS2; HYPT3; K6IRS4; KRT5C; KRT6IRS4
Mammalian Cell Selection:	Neomycin
Vector:	pCMV6-Entry (PS100001)
E. coli Selection:	Kanamycin (25 ug/mL)



[View online »](#)

ORF Nucleotide Sequence:

>RC218329 representing NM_175053
 Red=Cloning site Blue=ORF Green=Tags(s)

TTTTGTAATACGACTCACTATAGGGCGGCCGGAATTCGTCGACTGGATCCGGTACCGAGGAGATCTGCC
 GCC**CGCATCGCC**

ATGAGTCGGCACTGAACATCAAGTCCAGTGGTGACAAGGGCACTTCAGTGTGCATTTCGGCAGTGGTGC
 CAAGGAAGGCTGTGGGTAGCCTGGCTTCTACTGTGCAGCTGGCAGAGGGGCTGGCGCTGGCTTTGGCAG
 TCGGAGCCTCTATAGCCTTGGAGGGAATCGGCGTATTTCTTTCAATGTGGCTGGTGGCGCGCTTCGGCT
 GGAGGTTACGGCTTCAGGCCTGGCTCTGGGTATGGAGGGGGCCGGGCCAGTGGCTTTGCTGGCAGTATGT
 TTGGCAGTGTGGCCCTGGGGCTGCATGTTGTCTGTGTGCCACCTGGGGGCATCCACCAGTCACTGT
 CAACAAGAGCCTTTGGCCCCCTCAACGTGGAGCTGGACCTGAGATCCAGAAGGTGCGCGCCAGGAG
 CGGAACAGATCAAGGTGCTGAACGACAAGTTCGCCTCCTTCATTGACAAGGTACGCTTCTAGAGCAGC
 AGAACCAGTTCTAGAAACCAAGTGGGAGCTGCTGCAGCAGCTGGACCTGAACAAGTGAAGAAGAACT
 GGAGCCATCCTTGAAGGCTACATCAGCAACCTGCGGAAGCAGCTGGAGACTGTCTGGGGACAGGGTG
 AGGCTGGACTCGGAGCTGAGAAGCATGAGGGATCTGGTGGAGGACTATAAGAAGAGATATGAAGTGGAGA
 TTAACCGGCGCACGACAGCAGAGAATGAGTTTGTGGTGTAAAGAAGGATGCAGATGCAGCTACCGAGT
 CAAGGTGGAGCTTCAGGCCAAAGTGGACTCACTGGACAAAGAAATCAAGTTCTCAAGTGTCTGTATGAT
 GCAGAGATCGCTCAGATCCAGACTCACGCCAGTGAACCTCTGTCCATCCTGTCCATGGACAACAACCGGG
 ACCTGGACCTTGACAGCATCATCGCTGAGGTCCGCATGCATTATGAGGAGATCGCCCTGAAGAGCAAGGC
 CGAGGCCGAGGCCCTGTACCAGACCAAGATCCAGGAGCTGCAGCTGGCAGCCAGTCCGGATGGTGAACG
 CTGAAACACACCAGGAGCGAGATGGTGGAGCTGAACCGGCTCATCCAGAGGATCCGGTGTGAGATCGGGA
 ATGTGAAGAAGCAGCGTGCCAGCTGGAGACGGCCATCGCTGACGCTGAGCAGCGGGGAGACAATGCCCT
 GAAGGATGCCAGGCCAAGCTGGATGAGCTGGAGGGCGCCCTGCACCAGGCCAAGGAGGAGCTGGCGCGG
 ATGCTGCGCAGTACCAGGAGCTCATGAGCCTGAAACTGGCCCTGGACATGGAGATTGCCACCTACCGCA
 AGCTGCTGGAGGGCGAGGAGTGCAGGATGTCTGGTGAAGATCCATCCTCTGTGAGCATCTGTGCATCAG
 CAGTAGCAGTACAGCTACCACCACCCAGCTCTGCGGGTGTGACCTTGGGGCCAGCGCTGTGGCAGGC
 AGCTCTGGCAGCACCCAGAGCGGGCAGACCAAGACCACAGAGGCGGAGGGGGAGACCTCAAGGACACCC
 AGGGCAAGAGCACCCAGCCAGCATCCCAGCAAGGAAAGCCACCCGC

ACGCGTACGCGGCCGCTCGAGCAGAACTCATCTCAGAAGAGGATCTGGCAGCAAATGATATCCTGGATT
 ACAAGGATGACGACGATAAGGTTTAA

Protein Sequence:

>RC218329 representing NM_175053
 Red=Cloning site Green=Tags(s)

MSRQLNIKSSGDKGNFSVHSAVVRKAVGSLASYCAAGRAGAGFGSRSLYSLGGNRRISFNVAGGGVRA
 GGYGFRPGSGYGGGRASGFAGSMFGSVALGPACLSVCPPGGIHQVTVNKSLAPLNVELDPEIQKVRQEQ
 REQIKVLNDFASFIDKVRFLQEQNVLETKWELLQQLDLNNCKKNLEPILEGYISNLRKQLETLSGDRV
 RLDSELRSMRDLVEDYKKRYEVEINRRTTAENEFVVLKDDADAAYAVKVELQAKVDSLDEIKFLKCLYD
 AEIAQIQTHASETSVILSMDNRRDLDSIIAEVRMHYEEIALKSKAEAEALYQTKIQELQAASRHGDD
 LKHTRSEMVELNRLIQRIRCEIGNVKKQRASLETAIADAEQRGDNALKDAQAKLDELEGALHQAKEELAR
 MLREYQELMSLKLALDMEIATYRKLLEGEECRMSGENPSSVSISVISSSSYSHHPSSAGVDLGASAVAG
 SSGSTQSGQTKTTEARGGDLKDTQGKSTPASIPARKATR

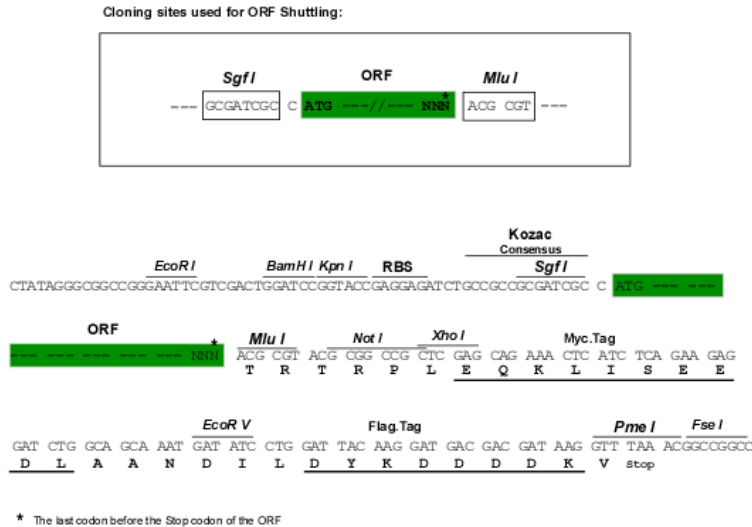
TRTRPLEQKLISEEDLAANDILDYKDDDDKV

Chromatograms:

https://cdn.origene.com/chromatograms/mk8021_d11.zip

Restriction Sites:

Sgfl-Mlul

Cloning Scheme:


ACCN: NM_175053

ORF Size: 1587 bp

OTI Disclaimer: The molecular sequence of this clone aligns with the gene accession number as a point of reference only. However, individual transcript sequences of the same gene can differ through naturally occurring variations (e.g. polymorphisms), each with its own valid existence. This clone is substantially in agreement with the reference, but a complete review of all prevailing variants is recommended prior to use. [More info](#)

OTI Annotation: This clone was engineered to express the complete ORF with an expression tag. Expression varies depending on the nature of the gene.

Components: The ORF clone is ion-exchange column purified and shipped in a 2D barcoded Matrix tube containing 10ug of transfection-ready, dried plasmid DNA (reconstitute with 100 ul of water).

Reconstitution Method:

1. Centrifuge at 5,000xg for 5min.
2. Carefully open the tube and add 100ul of sterile water to dissolve the DNA.
3. Close the tube and incubate for 10 minutes at room temperature.
4. Briefly vortex the tube and then do a quick spin (less than 5000xg) to concentrate the liquid at the bottom.
5. Store the suspended plasmid at -20°C. The DNA is stable for at least one year from date of shipping when stored at -20°C.

Note: Plasmids are not sterile. For experiments where strict sterility is required, filtration with 0.22um filter is required.

RefSeq: [NM_175053.4](#)

RefSeq Size: 2856 bp

RefSeq ORF: 1590 bp

Locus ID: 121391

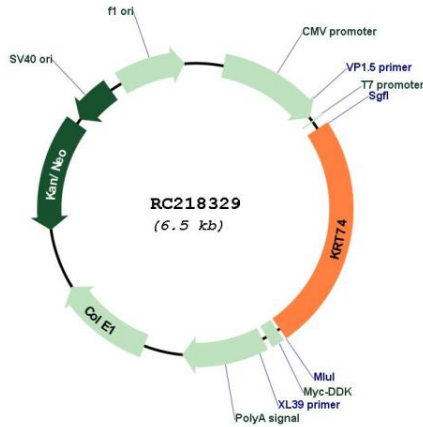
UniProt ID: [Q7RTS7](#)

Cytogenetics: 12q13.13

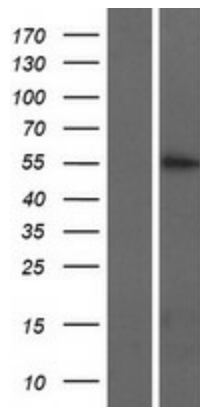
MW: 57.7 kDa

Gene Summary: Keratins are intermediate filament proteins responsible for the structural integrity of epithelial cells and are subdivided into epithelial keratins and hair keratins. This protein belongs to a family of keratins that are specifically expressed in the inner root sheath of hair follicles.[provided by RefSeq, Jun 2009]

Product images:



Circular map for RC218329



Western blot validation of overexpression lysate (Cat# [LY406377]) using anti-DDK antibody (Cat# [TA50011-100]). Left: Cell lysates from untransfected HEK293T cells; Right: Cell lysates from HEK293T cells transfected with RC218329 using transfection reagent MegaTran 2.0 (Cat# [TT210002]).