

Product datasheet for RC218328L4

RAET1G (NM_001001788) Human Tagged Lenti ORF Clone

Product data:

Product Type:	Expression Plasmids
Product Name:	RAET1G (NM_001001788) Human Tagged Lenti ORF Clone
Tag:	mGFP
Symbol:	RAET1G
Synonyms:	ULBP5
Mammalian Cell Selection:	Puromycin
Vector:	pLenti-C-mGFP-P2A-Puro (PS100093)
E. coli Selection:	Chloramphenicol (34 ug/mL)
ORF Nucleotide Sequence:	The ORF insert of this clone is exactly the same as(RC218328).
Restriction Sites:	SgfI-MluI
Cloning Scheme:	

Cloning sites used for ORF Shuttling:



* The last codon before the Stop codon of the ORF.

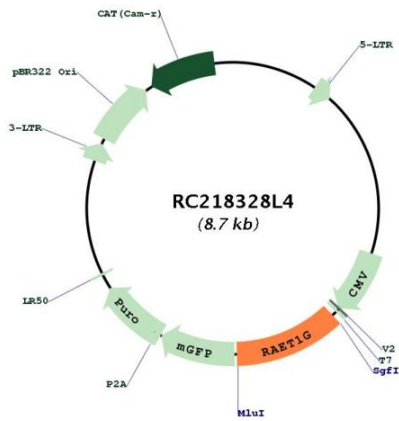
ACCN:	NM_001001788
ORF Size:	1002 bp



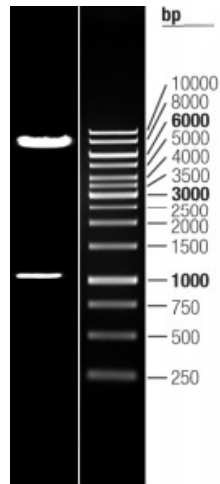
[View online »](#)

OTI Disclaimer:	The molecular sequence of this clone aligns with the gene accession number as a point of reference only. However, individual transcript sequences of the same gene can differ through naturally occurring variations (e.g. polymorphisms), each with its own valid existence. This clone is substantially in agreement with the reference, but a complete review of all prevailing variants is recommended prior to use. More info
OTI Annotation:	This clone was engineered to express the complete ORF with an expression tag. Expression varies depending on the nature of the gene.
Components:	The ORF clone is ion-exchange column purified and shipped in a 2D barcoded Matrix tube containing 10ug of transfection-ready, dried plasmid DNA (reconstitute with 100 ul of water).
Reconstitution Method:	<ol style="list-style-type: none">1. Centrifuge at 5,000xg for 5min.2. Carefully open the tube and add 100ul of sterile water to dissolve the DNA.3. Close the tube and incubate for 10 minutes at room temperature.4. Briefly vortex the tube and then do a quick spin (less than 5000xg) to concentrate the liquid at the bottom.5. Store the suspended plasmid at -20°C. The DNA is stable for at least one year from date of shipping when stored at -20°C.
RefSeq:	NM_001001788.2 , NP_001001788.2
RefSeq Size:	1144 bp
RefSeq ORF:	1005 bp
Locus ID:	353091
UniProt ID:	Q6H3X3
Cytogenetics:	6q25.1
Protein Families:	Druggable Genome
Protein Pathways:	Natural killer cell mediated cytotoxicity
MW:	36.9 kDa
Gene Summary:	This gene encodes a member of the major histocompatibility complex (MHC) class I family of proteins. Although the encoded protein includes C-terminal transmembrane and cytoplasmic domains, proteolytic processing results in the removal of these domains and subsequent tethering to the plasma membrane by a glycosylphosphatidylinositol (GPI)-anchor. The encoded protein is one of several related ligands of the natural killer group 2, member D (NKG2D) receptor, which functions as an activating receptor in innate and adaptive immunity. This gene is present in a gene cluster on chromosome 6. [provided by RefSeq, Jul 2015]

Product images:



Circular map for RC218328L4



Double digestion of RC218328L4 using SgfI and MluI