

Product datasheet for RC218327

Kallikrein 10 (KLK10) (NM_002776) Human Tagged ORF Clone

Product data:

Product Type:	Expression Plasmids
Product Name:	Kallikrein 10 (KLK10) (NM_002776) Human Tagged ORF Clone
Tag:	Myc-DDK
Symbol:	Kallikrein 10
Synonyms:	NES1; PRSSL1
Mammalian Cell Selection:	Neomycin
Vector:	pCMV6-Entry (PS100001)
E. coli Selection:	Kanamycin (25 ug/mL)
ORF Nucleotide Sequence:	>RC218327 representing NM_002776 Red=Cloning site Blue=ORF Green=Tags(s)

TTTTGTAATACGACTCACTATAGGGCGGCCGGAATTCGTCGACTGGATCCGGTACCGAGGAGATCTGCC
GCC**CGGATCGCC**

ATGAGAGCTCCGCACCTCCACCTCTCCGCCGCTCTGGCGCCGGGCTCTGGCGAAGCTGCTGCCGCTGC
TGATGGCGCAACTCTGGGCCGAGAGGGCGGCTGCTCCCCAAAACGACACGCGCTTGGACCCGAAGC
CTATGGCGCCCCGTGCGCGCGGCTCGCAGCCCTGGCAGGTCTCGCTTCAACGGCTCTCGTCCAC
TGCGGGGTGCTCTGGTGGACCAGAGTTGGGTGCTGACGGCCGCGCACTGCGAAACAAGCCACTGTGG
CTCGAGTAGGGGATGACCACCTGCTGCTTCTTCAGGGCGAGCAGCTCCGCCGGACGACTCGCTCTGTGT
CCATCCCAAGTACCACAGGGCTCAGGCCCATCTGCCAAGGCGAACGGATGAGCACGATCTCATGTTG
CTAAAGCTGGCCAGGCCGTAGTGCCGGGGCCCCGCTCCGGGCCCTGCAGCTTCCCTACCGCTGTGCTC
AGCCCGGAGACCAGTGCCAGTTGCTGGCTGGGGCACCACGGCCGCCGGAGAGTGAAGTACAACAAGGG
CCTGACCTGCTCCAGCATCACTATCCTGAGCCCTAAAGAGTGTGAGGTCTTACCCTGGCGTGGTCAAC
ACAACATGATATGTGCTGGACTGGACCGGGCCAGGACCCTTCCAGAGTGACTCTGGAGGCCCTGG
TCTGTGACGAGACCCTCAAGGCATCTCTCGTGGGTGTTTACCCTGTGGCTTGCCAGCATCCAGC
TGCTACACCCAGATCTGCAAAATACATGTCCTGGATCAATAAAGTCATACGCTCCAAC

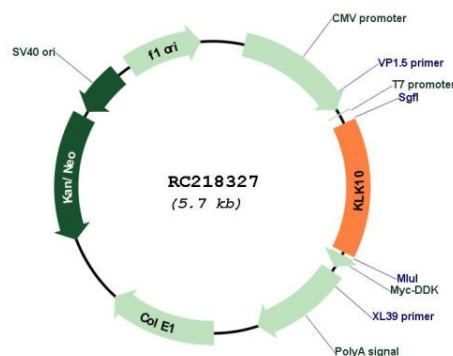
ACGCGTACGCGGCCGCTCGAGCAGAAACTCATCTCAGAAGAGGATCTGGCAGCAAATGATATCCTGGATT
ACAAGGATGACGACGATAAGGTTTAA



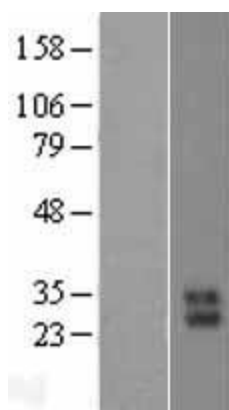
[View online »](#)

Reconstitution Method:	<ol style="list-style-type: none">1. Centrifuge at 5,000xg for 5min.2. Carefully open the tube and add 100ul of sterile water to dissolve the DNA.3. Close the tube and incubate for 10 minutes at room temperature.4. Briefly vortex the tube and then do a quick spin (less than 5000xg) to concentrate the liquid at the bottom.5. Store the suspended plasmid at -20°C. The DNA is stable for at least one year from date of shipping when stored at -20°C.
RefSeq:	NM_002776.2
RefSeq Size:	1580 bp
RefSeq ORF:	831 bp
Locus ID:	5655
UniProt ID:	O43240
Cytogenetics:	19q13.41
Protein Families:	Druggable Genome, Protease, Secreted Protein
MW:	30 kDa
Gene Summary:	<p>Kallikreins are a subgroup of serine proteases having diverse physiological functions. Growing evidence suggests that many kallikreins are implicated in carcinogenesis and some have potential as novel cancer and other disease biomarkers. This gene is one of the fifteen kallikrein subfamily members located in a cluster on chromosome 19. Its encoded protein is secreted and may play a role in suppression of tumorigenesis in breast and prostate cancers. Alternate splicing of this gene results in multiple transcript variants encoding the same protein. [provided by RefSeq, Jul 2008]</p>

Product images:



Circular map for RC218327



Western blot validation of overexpression lysate (Cat# [LY400984]) using anti-DDK antibody (Cat# [TA50011-100]). Left: Cell lysates from untransfected HEK293T cells; Right: Cell lysates from HEK293T cells transfected with RC218327 using transfection reagent MegaTran 2.0 (Cat# [TT210002]).