

Product datasheet for RC218322

DUSP13 (NM_001007272) Human Tagged ORF Clone

Product data:

Product Type:	Expression Plasmids
Product Name:	DUSP13 (NM_001007272) Human Tagged ORF Clone
Tag:	Myc-DDK
Symbol:	DUSP13
Synonyms:	BEDP; DUSP13A; DUSP13B; MDSP; SKRP4; TMDP
Mammalian Cell Selection:	Neomycin
Vector:	pCMV6-Entry (PS100001)
E. coli Selection:	Kanamycin (25 ug/mL)
ORF Nucleotide Sequence:	<p>>RC218322 representing NM_001007272</p> <p>Red=Cloning site Blue=ORF Green=Tags(s)</p>

TTTGTGTAATACGACTCACTATAGGGCGGCCGGAATTCGTCGACTGGATCCGGTACCGAGGAGATCTGCC
 GCCCGATCGCC

ATGGCTGAGACCTCTCTCCAGAGCTGGGGGAGAGGACAAAGCCACGCCTTGCCCCAGCATCCTGGAGC
 TGGAGGAGCTCCTGCGGGCAGGGAAGTCTTCTTGACGCCGTGTGGACGAAGTTTGCCCAACCTTTTCAT
 AGGAGATGCGATGGACTCACTGCAGAAGCAGGACCTCCGAGGCCCAAGATCCATGGGGCAGTCCAGGCA
 TCTCCCTACCAGCCGCCACATTGGCTTCGCTGCAGCGCTTGCTGTGGTCCGTCAGGCTGCCACACTGA
 ACCATATCGATGAGGTCTGGCCAGCCTCTTCTGGGAGATGCGTACGCAGCCCGGACAAGAGCAAGCT
 GATCCAGCTGGGAATCACCCACGTTGTGAATGCCGCTGCAGGCAAGTTCCAGGTGGACACAGGTGCCAAA
 TTCTACCGTGGAATGTCCCTGGAGTACTATGGCATCGAGGCGGACGACAACCCCTTCTTCGACCTCAGTG
 TCTACTTTCTGCCTGTTGCTCGATACATCCGAGCTGCCCTCAGTGTTCCCAAGGCCGCGTGCTGGTACA
 CTGTGCCATGGGGTAAGCCGCTCTGCCACACTTGCTGGCCTTCTCATGATCTGTGAGAACATGACG
 CTGGTAGAGGCCATCCAGACGGTGCAGGCCACCGCAATATCTGCCCTAACTCAGGCTTCTCCGGCAGC
 TCCAGGTTCTGGACAACCGACTGGGGCGGGAGACGGGGCGGTTT

ACGCGTACGCGGCCGCTCGAGCAGAACTCATCTCAGAAGAGGATCTGGCAGCAAATGATATCCTGGATT
 ACAAGGATGACGACGATAAGGTTTAA


[View online »](#)

Protein Sequence: >RC218322 representing NM_001007272
 Red=Cloning site Green=Tags(s)

MAETSLPELGGEDKATPCPSILEELELLRAGKSSCSRVDVWPNLFIGDAMDSLQKQDLRRPKIHGAVQA
 SPYQPPTLASLQRLWVRQAATLNHIDEVWPSLFLGDYAARDKSKLIQLGITHVVNAAAGKFQVDTGAK
 FYRGMSEYYGIEADNPFFDLVYFLPVARYIRAALSVPQGRVLVHCAMGVSRSATLVLAFLMICENMT
 LVEAIQTVQAHRNICPNSGFLRQLQVLNRLGRETGRF

TRTRPLEQKLISEEDLAANDILDYKDDDDKV

Chromatograms: https://cdn.origene.com/chromatograms/mk8004_c05.zip

Restriction Sites: SgfI-MluI

Cloning Scheme:



ACCN: NM_001007272

ORF Size: 744 bp

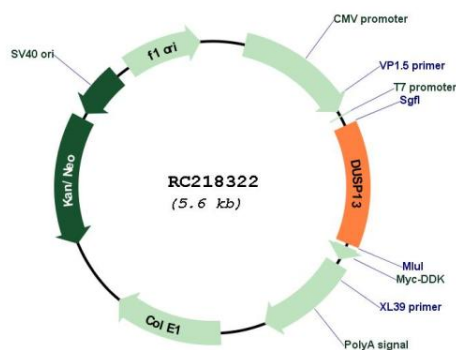
OTI Disclaimer: The molecular sequence of this clone aligns with the gene accession number as a point of reference only. However, individual transcript sequences of the same gene can differ through naturally occurring variations (e.g. polymorphisms), each with its own valid existence. This clone is substantially in agreement with the reference, but a complete review of all prevailing variants is recommended prior to use. [More info](#)

OTI Annotation: This clone was engineered to express the complete ORF with an expression tag. Expression varies depending on the nature of the gene.

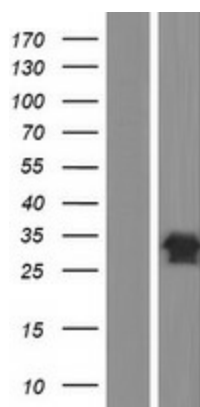
Components: The ORF clone is ion-exchange column purified and shipped in a 2D barcoded Matrix tube containing 10ug of transfection-ready, dried plasmid DNA (reconstitute with 100 ul of water).

Reconstitution Method:	<ol style="list-style-type: none"> 1. Centrifuge at 5,000xg for 5min. 2. Carefully open the tube and add 100ul of sterile water to dissolve the DNA. 3. Close the tube and incubate for 10 minutes at room temperature. 4. Briefly vortex the tube and then do a quick spin (less than 5000xg) to concentrate the liquid at the bottom. 5. Store the suspended plasmid at -20°C. The DNA is stable for at least one year from date of shipping when stored at -20°C.
Note:	Plasmids are not sterile. For experiments where strict sterility is required, filtration with 0.22um filter is required.
RefSeq:	<u>NM_001007272.2</u>
RefSeq Size:	1063 bp
RefSeq ORF:	747 bp
Locus ID:	51207
UniProt ID:	<u>Q6B8I1</u>
Cytogenetics:	10q22.2
Protein Families:	Druggable Genome, Phosphatase
MW:	27.3 kDa
Gene Summary:	<p>Members of the protein-tyrosine phosphatase superfamily cooperate with protein kinases to regulate cell proliferation and differentiation. This superfamily is separated into two families based on the substrate that is dephosphorylated. One family, the dual specificity phosphatases (DSPs) acts on both phosphotyrosine and phosphoserine/threonine residues. This gene encodes different but related DSP proteins through the use of non-overlapping open reading frames, alternate splicing, and presumed different transcription promoters. Expression of the distinct proteins from this gene has been found to be tissue specific and the proteins may be involved in postnatal development of specific tissues. A protein encoded by the upstream ORF was found in skeletal muscle, whereas the encoded protein from the downstream ORF was found only in testis. In mouse, a similar pattern of expression was found. Multiple alternatively spliced transcript variants were described, but the full-length sequence of only some were determined. [provided by RefSeq, Jul 2008]</p>

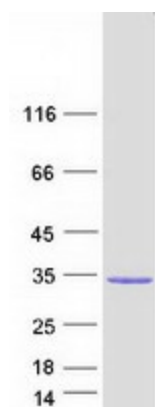
Product images:



Circular map for RC218322



Western blot validation of overexpression lysate (Cat# [LY423481]) using anti-DDK antibody (Cat# [TA50011-100]). Left: Cell lysates from untransfected HEK293T cells; Right: Cell lysates from HEK293T cells transfected with RC218322 using transfection reagent MegaTran 2.0 (Cat# [TT210002]).



Coomassie blue staining of purified DUSP13 protein (Cat# [TP318322]). The protein was produced from HEK293T cells transfected with DUSP13 cDNA clone (Cat# RC218322) using MegaTran 2.0 (Cat# [TT210002]).