

## Product datasheet for **RC218316**

### PPP2R5D (NM\_180977) Human Tagged ORF Clone

#### Product data:

|                           |  |
|---------------------------|--|
| Product Type:             | Expression Plasmids                        |
| Product Name:             | PPP2R5D (NM_180977) Human Tagged ORF Clone |
| Tag:                      | Myc-DDK                                    |
| Symbol:                   | PPP2R5D                                    |
| Synonyms:                 | B56D; B56delta; MRD35                      |
| Mammalian Cell Selection: | Neomycin                                   |
| Vector:                   | pCMV6-Entry (PS100001)                     |
| E. coli Selection:        | Kanamycin (25 ug/mL)                       |



[View online »](#)

**ORF Nucleotide Sequence:**

>RC218316 representing NM\_180977  
 Red=Cloning site Blue=ORF Green=Tags(s)

TTTTGTAATACGACTCACTATAGGGCGGCCGGAATTCGTCGACTGGATCCGGTACCGAGGAGATCTGCC  
 GCC**CGGATCGCC**

ATGCCCTATAAACTGAAAAAGGAGAAGGAGCTGTTTATCCAGAAGCTACGCCAGTGTGTCTCTTTG  
 ACTTCGTGTCAGACCCACTCAGTGACCTCAAATCAAGGAGGTGAAGCGGCAGGACTCAACGAGATGGT  
 GGAGTACATCACCCATAGCCGTGATGTTGTCACTGAGGCCATTTACCCTGAGGCTGCACCATGTTTTCA  
 GTGAACCTCTCCGGACGCTGCCACCTTCATCGAATCCCACAGGGGCTGAGTTTGACCCAGAGGAAGATG  
 AGCCACCCCTGGAAGCTGCTTGGCCACATCTCCAGCTCGTGTATGAGTTCTTCTACGTTTCCTTGAGTC  
 TCCTGATTTCCAGCCAAACATAGCCAAGAAGTACATCGACCAGAAGTTTGTACTTGCTCTCTAGACCTA  
 TTTGACAGTGAGGATCCTCGAGAGCGGGACTTCTCAAGACATTTTGCATCGCATCTATGGCAAGTTTT  
 TGGGGCTCCGGGCTTATATCCGTAGGCAGATCAACCACATCTTCTACAGGTTCTACGAGACGGAGCA  
 TCACAACGGGATTGCTGAGCTCCTGGAGATCCTGGGCAGCATCATCAATGGCTTTGCCCTGCCCTTAAA  
 GAAGAGCACAAGATGTTCCCTCATCCGTGTCCTACTTCCCCTTACAAGGTCAAGTCCCTGAGTGTCTACC  
 ACCCTCAGCTGGCATACTGTGTGGTACAATTCCTGGAGAAGGAGAGCAGTCTGACTGAGCCGGTAATTGT  
 GGGACTTCTCAAGTTTTGGCCAAAGACCCACAGCCCAAGGAGGTGATGTTCTTGAATGAGCTGGAGGAG  
 ATTCTGGACGTCATTGAACCTTCTGAGTTCAGCAAAGTATGAAACCCCTCTTCCGCCAGCTGGCCAAGT  
 GTGTCTCTAGCCCCATTTCCAGGTGGCAGAGCGTGTCTCTATTACTGGAACAATGAGTACATCATGAG  
 CCTGATAAGTGACAATGCTGCCGAGTCTCCCATCATGTTCCCTGCACTCTACAGGAACCTCAAGAGC  
 CACTGGAACAAGACAATCCATGGACTGATCTATAATGCCCTGAAGTTGTTTATGGAATGAATCAGAAGC  
 TGTTTGATGACTGCACACAACAATAACAAGGCAGAGAAGCAGAAGGGCCGTTCCGAATGAAGGAAAGGGA  
 AGAGATGTGGCAAAAAATCGAGGAGCTGGCCCGGCTTAATCCCCAGTATCCCATGTTCCGAGCCCTCCA  
 CCACTGCCCTGTGTACTCGATGGAGACAGACCCCCACAGCTGAGGACATCCAGTCTGAAGAGGA  
 CTGTGGAGACTGAGGCTGTTTCCAGATGCTAAAAGACATCAAGAAGGAGAAAGTGTCTGCGGAGGAAGTC  
 GGAGCTGCCCCAGGACGTGTACACCATCAAGGCACTGGAGGCGCACAAAGCGGGCGGAAGAGTTTCTAACT  
 GCCAGCCAGGAGGCTCTC

**ACGCGT**ACGCGGCCGCTCGAGCAGAAACTCATCTCAGAAGAGGATCTGGCAGCAAATGATATCTGGATT  
 ACAAGGATGACGACGATAAGGTTTAA

**Protein Sequence:**

>RC218316 representing NM\_180977  
 Red=Cloning site Green=Tags(s)

MPYKLLKEKELFIQKLRQCCVLFDFVSDPLSDLKFKEVKRAGLNEMVEYITHSRDVVTEAIYPEAVTMS  
 VNLFRTPSSNPTGAFFDPEEPTLEAAWPHLQLVYEFFLRFLFLESPDFQPNIAKKYIDQKFLALLDL  
 FSEDPRERDFLKTILHRIYGFGLRLRAYIRRNHIFYRFIYETEHHNGIAELLEILGSIINGFALPLK  
 EEHKMFLIRVLLPLHKVKSLSVYHPQLAYCVVQFLEKESLTPVIVGLLKFVWPKTHSPKVMFLNELEE  
 ILDVIPESEFSKVMPLFRQLAKCVSSPHFQVAERALYYWNEYIMSLISDNaARVLPIMFPALYRNSK  
 HWNKTIHGLIYNALKLFMEMNQKLFDDCTQQYKAEKQKGRFRMKEREEMWQKIEELARLNPQYPMFRAPP  
 PLPPVYSMETETPTAEDIQLLKRTVETEAVQMLKDIKKEKVLRRKSELPPQDVYTIKALEAHKRAEEFLT  
 ASQEAL

**TRTRPLEQKLI**SEEDLAANDILDYKDDDDKV

**Chromatograms:**

[https://cdn.origene.com/chromatograms/mk8063\\_d10.zip](https://cdn.origene.com/chromatograms/mk8063_d10.zip)

**Restriction Sites:**

SgfI-MluI

**Cloning Scheme:**


**ACCN:** NM\_180977

**ORF Size:** 1488 bp

**OTI Disclaimer:** The molecular sequence of this clone aligns with the gene accession number as a point of reference only. However, individual transcript sequences of the same gene can differ through naturally occurring variations (e.g. polymorphisms), each with its own valid existence. This clone is substantially in agreement with the reference, but a complete review of all prevailing variants is recommended prior to use. [More info](#)

**OTI Annotation:** This clone was engineered to express the complete ORF with an expression tag. Expression varies depending on the nature of the gene.

**Components:** The ORF clone is ion-exchange column purified and shipped in a 2D barcoded Matrix tube containing 10ug of transfection-ready, dried plasmid DNA (reconstitute with 100 ul of water).

- Reconstitution Method:**
1. Centrifuge at 5,000xg for 5min.
  2. Carefully open the tube and add 100ul of sterile water to dissolve the DNA.
  3. Close the tube and incubate for 10 minutes at room temperature.
  4. Briefly vortex the tube and then do a quick spin (less than 5000xg) to concentrate the liquid at the bottom.
  5. Store the suspended plasmid at -20°C. The DNA is stable for at least one year from date of shipping when stored at -20°C.

**RefSeq:** [NM\\_180977.3](#)

**RefSeq Size:** 2649 bp

**RefSeq ORF:** 1491 bp

**Locus ID:** 5528

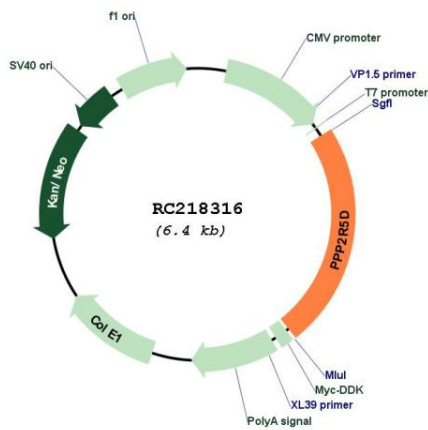
**UniProt ID:** [Q14738](#)

**Cytogenetics:** 6p21.1

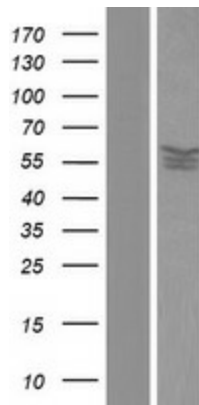
**Protein Families:** Phosphatase  
**Protein Pathways:** Oocyte meiosis, Wnt signaling pathway  
**MW:** 58.3 kDa

**Gene Summary:** The product of this gene belongs to the phosphatase 2A regulatory subunit B family. Protein phosphatase 2A is one of the four major Ser/Thr phosphatases, and it is implicated in the negative control of cell growth and division. It consists of a common heteromeric core enzyme, which is composed of a catalytic subunit and a constant regulatory subunit, that associates with a variety of regulatory subunits. The B regulatory subunit might modulate substrate selectivity and catalytic activity. This gene encodes a delta isoform of the regulatory subunit B56 subfamily. Alternatively spliced transcript variants encoding different isoforms have been identified. [provided by RefSeq, Jul 2008]

**Product images:**



Circular map for RC218316



Western blot validation of overexpression lysate (Cat# [LY405834]) using anti-DDK antibody (Cat# [TA50011-100]). Left: Cell lysates from untransfected HEK293T cells; Right: Cell lysates from HEK293T cells transfected with RC218316 using transfection reagent MegaTran 2.0 (Cat# [TT210002]).