

Product datasheet for **RC218312**

Band 3 (SLC4A1) (NM_000342) Human Tagged ORF Clone

Product data:

Product Type:	Expression Plasmids
Product Name:	Band 3 (SLC4A1) (NM_000342) Human Tagged ORF Clone
Tag:	Myc-DDK
Symbol:	Band 3
Synonyms:	AE1; BND3; CD233; CHC; DI; EMPB3; EPB3; FR; RTA1A; SAO; SPH4; SW; WD; WD1; WR
Mammalian Cell Selection:	Neomycin
Vector:	pCMV6-Entry (PS100001)
E. coli Selection:	Kanamycin (25 ug/mL)



[View online »](#)

**ORF Nucleotide
Sequence:**

>RC218312 representing NM_000342
 Red=Cloning site Blue=ORF Green=Tags(s)

TTTTGTAATACGACTCACTATAGGGCGGCCGGGAATTCGTCGACTGGATCCGGTACCGAGGAGATCTGCC
 GCC**CGGATCGCC**

ATGGAGGAGCTGCAGGATGATTATGAAGACATGATGGAGGAGAATCTGGAGCAGGAGGAATATGAAGACC
 CAGACATCCACGAGTCCCAGATGGAGGAGCCGGCAGCTCACGACACCGAGGCAACAGCCACAGACTACCA
 CACCACATCACACCCGGGTACCCACAAGGTCTATGTGGAGCTGCAGGAGCTGGTATGGACGAAAAGAAC
 CAGGAGCTGAGATGGATGGAGGCGCGCCTGGGTGCAACTGGAGGAGAACCTGGGGGAGAATGGGGCT
 GGGGCGCCCGCACCTCTCACCTCACCTTCTGGAGCCTCTAGAGCTGCGTAGAGTCTTACCAAGGG
 TACTGTCTCTAGACCTGCAAGAGACCTCCCTGGCTGGAGTGGCCAACCACTGCTAGACAGGTTTATC
 TTTGAAGACCAGATCCGGCTCAGGACCGAGAGGAGCTGCTCCGGGCCCTGCTGTTAAACAGCCACG
 CTGGAGAGCTGGAGGCCCTGGGGGTGTGAAGCCTGCAGTCTGACACGCTCTGGGGATCCTTACAGCC
 TCTGCTCCCCAACACTCCTCACTGGAGACACAGCTCTTCTGTGAGCAGGAGATGGGGCAGAGAAGGG
 CACTACCATCTGGAATTCTGAAAAGATTCCCCCGATTTCAGAGGCCAGTTGGTGTAGTGGGCCGCG
 CCGACTTCTGGAGCAGCCGGTCTGGGCTTCGTGAGGCTGCAGGAGGCAGCGGAGCTGGAGCGGTGGA
 GCTGCCGGTGCCTATACGCTTCTTTGTGTTGCTGGGACCTGAGGCCCCACATCGATTACACCCAG
 CTTGGCCGGGCTGCTGCCACCCTCATGTGAGAGGGGTGTTCCGCATAGATGCCTACATGGCTCAGAGCC
 GAGGGGAGCTGCTGCACTCCCTAGAGGGCTTCTGGACTGCAGCCTAGTGTGCTCCACCCGATGCCCC
 CTCCGAGCAGGCACTGCTCAGTCTGGTGCCTGTGAGAGGGAGCTACTTCGAAGGCGCTATCAGTCCAGC
 CCTGCCAAGCCAGACTCCAGCTTCTACAAGGGCCTAGACTTAAATGGGGGCCAGATGACCTCTGCAGC
 AGACAGCCAGCTCTTCGGGGCCCTGGTGCATATCCGGCGCCGCTACCCCTATTACCTGAGTGACAT
 CACAGATGCATTACGCCCCAGGTCCTGGCTGCCGTCTTTCATCTACTTTGCTGCACTGTCACCCGCG
 ATCACCTTCGGCGGCTCCTGGGAGAAAAGACCCGGAACAGATGGGAGTGTGCGAGCTGCTGATCTCCA
 CTGCACTGCAGGGCATTCTCTCGCCCTGCTGGGGCTCAGCCCTGCTTGTGGTTCGGCTTCTCAGGACC
 CCTGCTGGTGTGAGGAAGCCTTCTTCTGTTCTGCGAGACCAACGGTCTAGAGTACATCGTGGCCGCG
 GTGTGGATCGGCTTCTGGCTCATCTGCTGGTGGTGGTGGTGGCCTTCGAGGGTAGCTTCTGGTCC
 GCTTCTCTCCGCTATACCCAGGAGATCTTCTCCTTCTCATTCCCTCATCTTATGAGACTTT
 CTCCAAGCTGATCAAGATCTTCCAGGACCACCCACTACAGAAGACTTATAACTACAACGTGTTGATGGT
 CCCAAACCTCAGGGCCCCCTGCCAACACAGCCCTCCTCTCCCTGTGCTCATGGCCGGTACCTTCTTCT
 TTGCCATGATGCTGCGCAAGTTCAGAAGACAGCTCCTATTTCCCTGGCAAGCTGCGTCCGGTTCATCGGGG
 CTTCCGGGTCATCTCCATCCTGATCATGGTCTGGTGGATTTCTTATTAGGATACCTACACCCAG
 AAATCTCGGTGCCTGATGGCTTCAAGGTGTCAAACCTCCTCAGCCCGGGGCTGGGTTCATCCACCCACTGG
 GCTTGGCTTCCGAGTTTCCCATCTGGATGATGTTTGCCTCCGCCCTGCCTGCTCTGCTGGTCTTATCCT
 CATATTCTGGAGTCTCAGATCACACGCTGATTTGTCAGCAAACCTGAGCGCAAGATGGTCAAGGGCTCC
 GGCTTCCACCTGGACCTGCTGCTGGTAGTAGGCATGGGTGGGGTGGCCGCCCTTTGGGATGCCCTGGC
 TCAGTGCCACCACCGTCCGTCCGTACCCATGCCAACGCCCTCACTGTGATGGGCAAAGCCAGCACCCC
 AGGGGCTGCAGCCAGATCCAGGAGGTCAAAGAGCAGCGGATCAGTGGACTCCTGGTCCGCTGTGTTG
 GGCTGTCCATCCTCATGGAGCCATCCTGTCCGCATCCCCCTGGCTGTACTGTTTGCATCTTCTCT
 ACATGGGGTACGTCGCTCAGCGGCATCCAGCTCTTGACCGCATCTTGCTTCTGTTCAAGCCACCCAA
 GTATCACCCAGATGTGCCTACGTCAAGCGGGTGAAGACCTGGCGCATGCACTTATTACGGGCATCCAG
 ATCATCTGCCTGGCAGTGTGTGGTGGTGAAGTCCACGCGGCCCTCCCTGGCCCTGCCCTTCTGCTCA
 TCCTCACTGTGCCGCTGCGGCGCTCTGCTGCCGCTCATCTTACGGAACGTGGAGCTTCAAGTGTCTGGA
 TGCTGATGATGCCAAGGCAACCTTTGATGAGGAGGAAGTCCGGATGAATACGACGAAGTGGCCATGCCT
 GTG

ACGCGTACGCGGCCGCTCGAGCAGAACTCATCTCAGAAGAGGATCTGGCAGCAAATGATATCCTGGATT
 ACAAGGATGACGACGATAAGGTTTAA

Protein Sequence: >RC218312 representing NM_000342
 Red=Cloning site Green=Tags(s)

```
MEELQDDYEDMMEENLEQEEYEDPDIHESQMEEPAHDTEATATDYHTTSHPGTHKVVYVELQELVMDEKN
QELRWMEARWVQLEENLGENGAWGRPHLSHLTFWSLLELRRVFTKGTVLLDLQETSLAGVANQLLDRFI
FEDQIRPQDREELLRALLLKHSHAGELEALGGVKPAVLTRSGDPSQPLLPQHSSLETQLFCEQDGGTEG
HSPSGILEKIPPDSEATLVLVGRADFLEQPVLFVRLQEAAELEAVELPVPPIRFLVLLGPEAPHIDYTQ
LGRAAATLMSEFRIDAYMAQSRGELLHSLLEGFLDCSLVLPPTDAPSEQALLSLVPVQRELLRRRYQSS
PAKPDSSFYKGLDLNGGPDPLQQTQGLFGGLVRDIRRRYPYYLSDITDAFSPQVLAIVFIYFAALSPA
ITFGGLLGEKTRNQMGVSELLISTAVQGILFALLGAQPLLVVGFSGPLLVFEEAFFSFCETNGLEYIVGR
VWIGFWLILLVVLVVAFEFSFLVRFISRYTQEIFSFLISLIFIYETFSKLIKIFQDHLQKTYNNVLMV
PKPQGPLPNTALLSLVLMAGTFFFAMMLRKFKNSSYFPGKLRVIGDFGVPIISILIMVLVDFFIQDTYTQ
KLSVPDGFKVSNSARGWVIHPLGLRSEFPIWMMFASALPALLVFILIFLESQITTLIVSKPERKMKVGS
GFHLDLLLVVGMGGVAALFGMPWLSATTVRSVTHANALVMGKASTPGAAAQIQEVEKQRI SGLLVAVLV
GLSILMEPILSRIPLAVLFGIFLYMGVTSLSGIQLFDRILLFLKPPKYHPDPVYKRVKVTWRMHLFTGIQ
IICLAVLWVVKSTPASLALPFVLIILTVPLRRVLLPLIFRNVELQCLDADDAKATFDEEEGRDEYDEVAMP
V
```

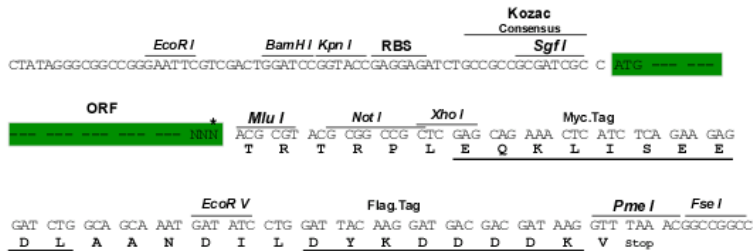
TRTRPLEQKLISEEDLAANDILDYKDDDDKV

Chromatograms: https://cdn.origene.com/chromatograms/mg3391_f06.zip

Restriction Sites: SgfI-MluI

Cloning Scheme:

Cloning sites used for ORF Shuttling:



* The last codon before the Stop codon of the ORF

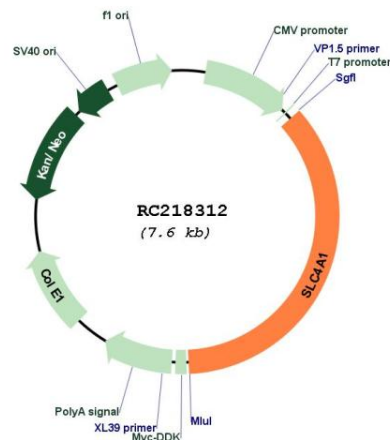
ACCN: NM_000342

ORF Size: 2733 bp

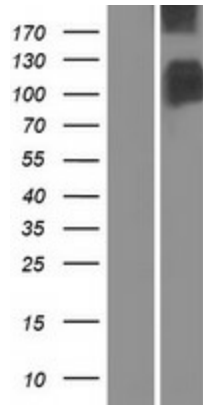
OTI Disclaimer:	The molecular sequence of this clone aligns with the gene accession number as a point of reference only. However, individual transcript sequences of the same gene can differ through naturally occurring variations (e.g. polymorphisms), each with its own valid existence. This clone is substantially in agreement with the reference, but a complete review of all prevailing variants is recommended prior to use. More info
OTI Annotation:	This clone was engineered to express the complete ORF with an expression tag. Expression varies depending on the nature of the gene.
Components:	The ORF clone is ion-exchange column purified and shipped in a 2D barcoded Matrix tube containing 10ug of transfection-ready, dried plasmid DNA (reconstitute with 100 ul of water).
Reconstitution Method:	<ol style="list-style-type: none">1. Centrifuge at 5,000xg for 5min.2. Carefully open the tube and add 100ul of sterile water to dissolve the DNA.3. Close the tube and incubate for 10 minutes at room temperature.4. Briefly vortex the tube and then do a quick spin (less than 5000xg) to concentrate the liquid at the bottom.5. Store the suspended plasmid at -20°C. The DNA is stable for at least one year from date of shipping when stored at -20°C.
RefSeq:	NM_000342.4
RefSeq Size:	3637 bp
RefSeq ORF:	2736 bp
Locus ID:	6521
UniProt ID:	P02730
Cytogenetics:	17q21.31
Domains:	HCO3_cotransp
Protein Families:	Druggable Genome, Transmembrane
MW:	101.6 kDa

Gene Summary:

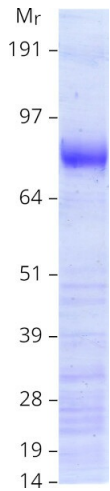
The protein encoded by this gene is part of the anion exchanger (AE) family and is expressed in the erythrocyte plasma membrane, where it functions as a chloride/bicarbonate exchanger involved in carbon dioxide transport from tissues to lungs. The protein comprises two domains that are structurally and functionally distinct. The N-terminal 40kDa domain is located in the cytoplasm and acts as an attachment site for the red cell skeleton by binding ankyrin. The glycosylated C-terminal membrane-associated domain contains 12-14 membrane spanning segments and carries out the stilbene disulphonate-sensitive exchange transport of anions. The cytoplasmic tail at the extreme C-terminus of the membrane domain binds carbonic anhydrase II. The encoded protein associates with the red cell membrane protein glycophorin A and this association promotes the correct folding and translocation of the exchanger. This protein is predominantly dimeric but forms tetramers in the presence of ankyrin. Many mutations in this gene are known in man, and these mutations can lead to two types of disease: destabilization of red cell membrane leading to hereditary spherocytosis, and defective kidney acid secretion leading to distal renal tubular acidosis. Other mutations that do not give rise to disease result in novel blood group antigens, which form the Diego blood group system. Southeast Asian ovalocytosis (SAO, Melanesian ovalocytosis) results from the heterozygous presence of a deletion in the encoded protein and is common in areas where *Plasmodium falciparum* malaria is endemic. One null mutation in this gene is known, resulting in very severe anemia and nephrocalcinosis. [provided by RefSeq, Jul 2008]

Product images:

Circular map for RC218312



Western blot validation of overexpression lysate (Cat# [LY424786]) using anti-DDK antibody (Cat# [TA50011-100]). Left: Cell lysates from untransfected HEK293T cells; Right: Cell lysates from HEK293T cells transfected with RC218312 using transfection reagent MegaTran 2.0 (Cat# [TT210002]).



Coomassie blue staining of purified SLC4A1 protein (Cat# [TP318312]). The protein was produced from HEK293T cells transfected with SLC4A1 cDNA clone (Cat# RC218312) using MegaTran 2.0 (Cat# [TT210002]).