

Product datasheet for **RC218307**

PRPF31 (NM_015629) Human Tagged ORF Clone

Product data:

Product Type:	Expression Plasmids
Product Name:	PRPF31 (NM_015629) Human Tagged ORF Clone
Tag:	Myc-DDK
Symbol:	PRPF31
Synonyms:	NY-BR-99; PRP31; RP11; SNRNP61
Mammalian Cell Selection:	Neomycin
Vector:	pCMV6-Entry (PS100001)
E. coli Selection:	Kanamycin (25 ug/mL)



[View online »](#)

ORF Nucleotide Sequence:

>RC218307 representing NM_015629
 Red=Cloning site Blue=ORF Green=Tags(s)

TTTTGTAATACGACTCACTATAGGGCGGCCGGGAATTCGTCGACTGGATCCGGTACCGAGGAGATCTGCC
 GCC**CGGATCGCC**

ATGTCTCTGGCAGATGAGCTCTTAGCTGATCTCGAAGAGGCAGCAGAAGAGGAGGAAGGAGGAAGCTATG
 GGGAGGAAGAAGAGGAGCCAGCGATCGAGGATGTGCAGGAGGAGACACAGCTGGATCTTTCCGGGATTC
 AGTCAAGACCATCGCAAGCTATGGGATAGTAAGATGTTTGTGAGATTATGATGAAGATTGAGGAGTAT
 ATCAGCAAGCAAGCCAAAGCTTCAGAAGTGATGGGACCAGTGGAGGCCGCGCCTGAATACCGCGTCATCG
 TGGATGCCAACAACTGACCGTGGAGATCGAAAACGAGCTGAACATCATCCATAAGTTTATCCGGGATAA
 GACTCAAAGAGATTCCCTGAAGTGGAGTCTTGGTCCCCAATGCACTGGATTACATCCGACCGTCAAG
 GAGCTGGCAACAGCCTGGACAAGTGAAGAACAATGAGAACCTGCAGCAGATCCTACCAATGCCACCA
 TCATGGTCGTGACGTCACCGCTCCACCACCCAGGGGCAGCAGCTGTCGGAGGAGGAGCTGGAGCGGCT
 GGAGGAGCCTGCGACATGGCGCTGGAGCTGAACGCCTCAAGCACCGCATCTACGAGTATGTGGAGTCC
 CGGATGTCTTCATCGCACCCAACCTGTCCATCATTATCGGGGCATCCACGGCCGCAAGATCATGGGTG
 TGGCCGGCGCCTGACCAACCTCTCAAGATGCCTGCCTGCAACATCATGCTGCTCGGGGCCAGCGCAA
 GACGCTGTGCGGCTTCTCGTCTACCTCAGTGTGCCCCACACCGGCTACATCTACCACAGTGACATCGTG
 CAGTCCCTGCCACCGGATCTGCGCGGAAAGCGGCCCGGCTGGTGGCCGCAAGTGCACACTGGCAGCCC
 GTGTGGACAGTTTCCACGAGAGCACAGAAGGGAAGGTGGGCTACGAACTGAAGGATGAGATCGAGCGCAA
 ATTCGACAAGTGGCAGGAGCCGCGCTGTGAAGCAGGTGAAGCCGCTGCCTGCGCCCCTGGATGGACAG
 CGGAAGAAGCGAGGCGGCCGAGGTACCGCAAGATGAAGGAGCGGCTGGGGCTGACGGAGATCCGGAAGC
 AGGCCAACCGTATGAGCTTCGGAGAGATCGAGGAGGACGCCTACCAGGAGACCTGGGATTCAGCTGGG
 CCACCTGGGCAAGTCGGGCAAGTGGGCGTGTGCGGCAGACACAGGTAAACGAGGCCACCAAGGCCAGGATC
 TCCAAGACGCTGCAGCGGACCCTGCAGAAGCAGAGCGTCTATATGGCGGGAAGTCCACCATCCGCGACC
 GCTCCTCGGGCACGGCTCCAGCGTGGCCTTACCCCACTCCAGGGCCTGGAGATTGTGAACCCACAGGC
 GGCAGAGAAGAAGGTGGCTGAGGCCAACAGAAGTATTCTCCAGCATGGCTGAGTTCCTCAAGTTAAG
 GCGGAGAAGAGTGGCCTTATGTCCACC

ACGCGTACGCGGCCGCTCGAGCAGAACTCATCTCAGAAGAGGATCTGGCAGCAAATGATATCCTGGATT
 ACAAGGATGACGACGATAAGGTTTAA

Protein Sequence:

>RC218307 representing NM_015629
 Red=Cloning site Green=Tags(s)

MSLADELLADLEEAEEEEEGGSYEEEEPAIEDVQEETQLDLSGDSVKTI AKLWDSKMF AEIMMKIEEY
 ISKQAKASEVMGPVEAAPEYRVIDANNL TVEIENELNI IHKF IRDKYSKRFPELES LVPNALDYIRTVK
 ELGNSLDKCKNNENLQQILT NATIMVSVTASTTQGGQL SEEELERLEEACDMALELNASKHRIEYVES
 RMSFIAPNLSIIIGASTAAKIMGVAGGLTNL SKMPACNIMLLGAQRKTL SGFSSTSVLPHTGYIYHSDIV
 QSLPPDLRRKAARLVAAKCTLAARVDSFHSTEGKVG YELKDEIERKFDKWQEP PPVKQVKPLPAPLDGQ
 RKKRGGRRYRKMKERLGLTEIRKQANRMSFGEIEEDAYQEDLGFSLGHLGKSGSGRVRQTQVNEATKARI
 SKTLQRTLQKQSVVYGGKSTIRDRSSGTASSVAF TPLQGLEIVNPQAAEKKVAEANQKYFSSMAEFLKVK
 GEKSGLMST

TRTRPLEQKLISEEDLAANDILDYKDDDDKV

Chromatograms:

https://cdn.origene.com/chromatograms/mk6200_d06.zip

Restriction Sites:

Sgfl-Mlul

Cloning Scheme:



ACCN: NM_015629

ORF Size: 1497 bp

OTI Disclaimer: The molecular sequence of this clone aligns with the gene accession number as a point of reference only. However, individual transcript sequences of the same gene can differ through naturally occurring variations (e.g. polymorphisms), each with its own valid existence. This clone is substantially in agreement with the reference, but a complete review of all prevailing variants is recommended prior to use. [More info](#)

OTI Annotation: This clone was engineered to express the complete ORF with an expression tag. Expression varies depending on the nature of the gene.

Components: The ORF clone is ion-exchange column purified and shipped in a 2D barcoded Matrix tube containing 10ug of transfection-ready, dried plasmid DNA (reconstitute with 100 ul of water).

- Reconstitution Method:
1. Centrifuge at 5,000xg for 5min.
 2. Carefully open the tube and add 100ul of sterile water to dissolve the DNA.
 3. Close the tube and incubate for 10 minutes at room temperature.
 4. Briefly vortex the tube and then do a quick spin (less than 5000xg) to concentrate the liquid at the bottom.
 5. Store the suspended plasmid at -20°C. The DNA is stable for at least one year from date of shipping when stored at -20°C.

Note: Plasmids are not sterile. For experiments where strict sterility is required, filtration with 0.22um filter is required.

RefSeq: [NM_015629.4](#)

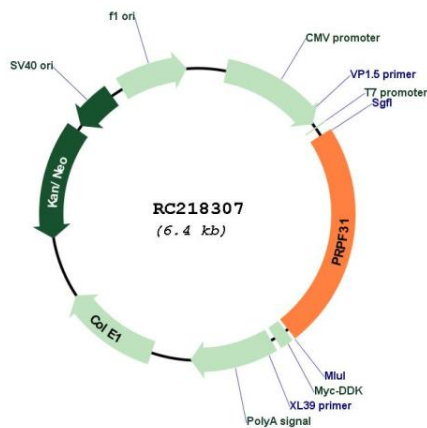
RefSeq Size: 2153 bp

RefSeq ORF: 1500 bp

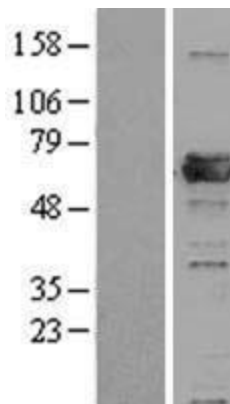
Locus ID: 26121

UniProt ID:	Q8WWY3
Cytogenetics:	19q13.42
Domains:	Nop
Protein Families:	Druggable Genome
Protein Pathways:	Spliceosome
MW:	55.3 kDa
Gene Summary:	This gene encodes a component of the spliceosome complex and is one of several retinitis pigmentosa-causing genes. When the gene product is added to the spliceosome complex, activation occurs.[provided by RefSeq, Jan 2009]

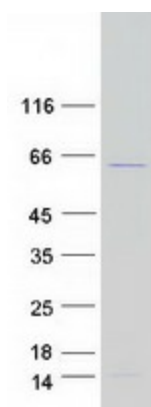
Product images:



Circular map for RC218307



Western blot validation of overexpression lysate (Cat# [LY402453]) using anti-DDK antibody (Cat# [TA50011-100]). Left: Cell lysates from untransfected HEK293T cells; Right: Cell lysates from HEK293T cells transfected with RC218307 using transfection reagent MegaTran 2.0 (Cat# [TT210002]).



Coomassie blue staining of purified PRPF31 protein (Cat# [TP318307]). The protein was produced from HEK293T cells transfected with PRPF31 cDNA clone (Cat# RC218307) using MegaTran 2.0 (Cat# [TT210002]).