

Product datasheet for **RC218306**

RNF21 (TRIM34) (NM_021616) Human Tagged ORF Clone

Product data:

Product Type:	Expression Plasmids
Product Name:	RNF21 (TRIM34) (NM_021616) Human Tagged ORF Clone
Tag:	Myc-DDK
Symbol:	RNF21
Synonyms:	IFP1; RNF21
Mammalian Cell Selection:	Neomycin
Vector:	pCMV6-Entry (PS100001)
E. coli Selection:	Kanamycin (25 ug/mL)



[View online »](#)

ORF Nucleotide Sequence:

>RC218306 representing NM_021616
 Red=Cloning site Blue=ORF Green=Tags(s)

TTTTGTAATACGACTCACTATAGGGCGGCCGGGAATTCGTCGACTGGATCCGGTACCGAGGAGATCTGCC
 GCC**CGCATCGCC**

ATGGCTTCAAAAATCTTGCTTAACGTACAAGAGGAGGTGACCTGTCCCATCTGCCTGGAGCTGTTGACAG
 AACCCCTTGAGTCTAGACTGTGGCCACAGCCTCTGCCGAGCCTGCATCACTGTGAGCAACAAGGAGGCAGT
 GACCAGCATGGGAGGAAAAAGCAGCTGTCTGTGTGGTATCAGTTACTCATTTGAACATCTACAGGCT
 AATCAGCATCTGGCCAACATAGTGGAGAGACTCAAGGAGGTCAAGTTGAGCCAGACAATGGGAAGAAGA
 GAGATCTCTGTGATCATCATGGAGAGAACTCCTACTCTTCTGTAAGGAGGATAGGAAAGTCATTTGCTG
 GCTTTGTGAGCGGTCTCAGGAGCACCGTGGTACCACACAGTCTCACGGAGGAAGTATTCAGGAATGT
 CAGGAGAACTCCAGGCAGTCTCAAGAGGCTGAAGAAGGAAGAGGAGGAAGCTGAGAAGCTGGAAGCTG
 ACATCAGAGAAGAGAAAACCTTCTGGAAGTATCAGGTACAACTGAGAGACAAAGGATACAAACAGAATT
 TGATCAGCTTAGAAGCATCTAAATAATGAGGAGCAGAGAGAGCTGCAAAGATTGGAAGAAGAAGAAAAG
 AAGACGCTGGATAAGTTTGCAGAGGCTGAGGATGAGCTAGTTACAGAGAAGCAGTTGGTGAGAGAGCTCA
 TCTCAGATGTGGAGTGTCCGAGTCAAGTGGTCAACAATGGAGCTGCTGCAGGACATGAGTGGAAATCATGAA
 ATGGAGTGAGATCTGGAGGCTGAAAAAGCCAAAAATGGTTTCCAAGAACTGAAGACTGTATTCCATGCT
 CCAGATCTGAGTAGGATGCTGCAAAATGTTTAGAGAAGTACAGAGTGTCCGGTGTACTGGGTGGATGTCA
 CACTGAATTCAGTCAACCTAAATTTGAATCTTGTCTTTCAGAAGATCAGAGACAAGTGATATCTGTGCC
 AATTTGGCCTTTTCAGTGTATAATTATGGTGTCTTGGGATCCCAATATTTCTCCTCTGGGAAACATTAC
 TGGGAAGTGGACGTGTCCAAGAAAACCTGCTGGATCCTGGGGTATACTGTAGAACATATCCCGCCATA
 TGAAGTATGTTGTTAGAAGATGTGCAAAATCGTCAAAATCTTACACCAAAATACAGACCTTATTTGGCTA
 CTGGGTTATAGGTTACAGAATAAATGTAAGTATGGTGTCTTTGAAGAGTCTTTGTCCTCTGATCCCGAG
 GTTTTGACTCTCTCCATGGCTGTGCCTCCCTGCCGTGTTGGGTTTTCTCGACTATGAAGCAGGCATTG
 TCTCATTTTTCAATGTCACAAGCCATGGCTCCCTCATTTACAAGTTCTCTAAATGTTGCTTTTCTCAGCC
 TGTTTATCCATATTTCAATCCTTGGAACTGTCCAGCTCCCATGACTCTATGCCCAACAGCTCT

ACGCGTACGCGGCCGCTCGAGCAGAACTCATCTCAGAAGAGGATCTGGCAGCAATGATATCCTGGATT
 ACAAGGATGACGACGATAAGGTTTAA

Protein Sequence:

>RC218306 representing NM_021616
 Red=Cloning site Green=Tags(s)

MASKILLNVQEEVTCPICLELLTEPLSLDCGHSLCRACITVSNKEAVTSMGGKSSCPVCGISYSFEHLQA
 NQHLANIVERLKEVKLSPDNGKKRDLCDHHGKLLLFCKEDRKVICWLCERSQEHGRHHTVLTTEEVFKEC
 QEKLQAVLKRLLKKEEEEAEKLEADIREEKTSWKYQVQTERQRIQTEFDQLRSILNNEEQRELQRLEEEK
 KTLDFKFAEADELVQKQLVRELI SDVECRSQWSTMELLQDMSGIMKWSEIWRLKPKMVSCKLKTVFHA
 PDL SRMLQMFRELTA VR CYWVDVTLNSVNLNLNLVLSAQQRQVISVPIWPFQCYNYGVLGSQYFSSGKHY
 WEVDVSKKTAWILGVYCRYSRHMKYVVRRCANRQNLTKYRPLFGYWVIGLQNKCKYGVFEESLSSDPE
 VLTLSMAVPPCRVGVFLDYEAGIVSFFNVTSHGSLIYKFSKCCFSQPVPYPFNPWNCPAPMTLCPSS

TRTRPLEQKLI SEEDLAANDILDYKDDDDKV

Chromatograms:

https://cdn.origene.com/chromatograms/mk6109_c06.zip

Restriction Sites:

Sgfl-MluI

Cloning Scheme:

Cloning sites used for ORF Shutting:



* The last codon before the Stop codon of the ORF

ACCN: NM_021616

ORF Size: 1464 bp

OTI Disclaimer: The molecular sequence of this clone aligns with the gene accession number as a point of reference only. However, individual transcript sequences of the same gene can differ through naturally occurring variations (e.g. polymorphisms), each with its own valid existence. This clone is substantially in agreement with the reference, but a complete review of all prevailing variants is recommended prior to use. [More info](#)

OTI Annotation: This clone was engineered to express the complete ORF with an expression tag. Expression varies depending on the nature of the gene.

Components: The ORF clone is ion-exchange column purified and shipped in a 2D barcoded Matrix tube containing 10ug of transfection-ready, dried plasmid DNA (reconstitute with 100 ul of water).

Reconstitution Method:

1. Centrifuge at 5,000xg for 5min.
2. Carefully open the tube and add 100ul of sterile water to dissolve the DNA.
3. Close the tube and incubate for 10 minutes at room temperature.
4. Briefly vortex the tube and then do a quick spin (less than 5000xg) to concentrate the liquid at the bottom.
5. Store the suspended plasmid at -20°C. The DNA is stable for at least one year from date of shipping when stored at -20°C.

RefSeq: [NM_021616.6](#)
RefSeq Size: 2302 bp

RefSeq ORF: 1467 bp

Locus ID: 53840

UniProt ID: [Q9BYJ4](#)
Cytogenetics: 11p15.4

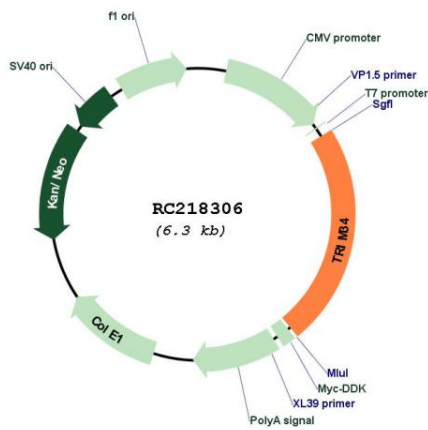
Domains: zf-B_box, RING, SPRY

Protein Families: Druggable Genome

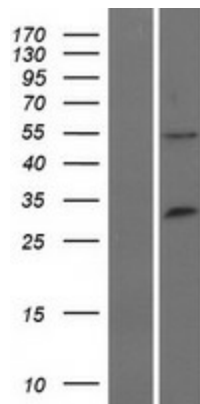
MW: 56.7 kDa

Gene Summary: The protein encoded by this gene is a member of the tripartite motif (TRIM) family. The TRIM motif includes three zinc-binding domains, a RING, B-box type 1 and B-box type 2 domain, and a coiled-coil region. Expression of this gene is up-regulated by interferon. This gene is mapped to chromosome 11p15, where it resides within a TRIM gene cluster. Alternative splicing results in multiple transcript variants. A read-through transcript from the upstream TRIM6 gene has also been observed, which results in a fusion product from these neighboring family members. [provided by RefSeq, Oct 2010]

Product images:



Circular map for RC218306



Western blot validation of overexpression lysate (Cat# [LY424025]) using anti-DDK antibody (Cat# [TA50011-100]). Left: Cell lysates from untransfected HEK293T cells; Right: Cell lysates from HEK293T cells transfected with [RC220161] using transfection reagent MegaTran 2.0 (Cat# [TT210002]).