

Product datasheet for RC218300

HPR (NM_020995) Human Tagged ORF Clone

Product data:

Product Type:	Expression Plasmids
Product Name:	HPR (NM_020995) Human Tagged ORF Clone
Tag:	Myc-DDK
Symbol:	HPR
Synonyms:	A-259H10.2; HP
Mammalian Cell Selection:	Neomycin
Vector:	pCMV6-Entry (PS100001)
E. coli Selection:	Kanamycin (25 ug/mL)
ORF Nucleotide Sequence:	>RC218300 representing NM_020995 Red=Cloning site Blue=ORF Green=Tags(s)

TTTTGTAATACGACTCACTATAGGGCGGCCGGAATTCGTCGACTGGATCCGGTACCGAGGAGATCTGCC
 GCCCGCATCGCC

ATGAGTGACCTGGGAGCTGTCAATTCCTCCTGCTCTGGGACGACAGCTTTTGCAGTGTACTCAGGCA
 ATGATGTCACGGATATTCAGATGACCGCTTCCGAAGCCCCCTGAGATTGCAAATGGCTATGTGGAGCA
 CTTGTTTCGCTACCAAGTGAAGAACTACTACAGACTGCGCACAGAAGGAGATGGAGTATACACCTTAAAT
 GATAAGAAGCAGTGGATAAATAAGGCTGTTGGAGATAAACTTCCTGAATGTGAAGCAGTATGTGGGAAGC
 CCAAGAATCCGGCAAACCCAGTGCAGCGGATCCTGGGTGGACACCTGGATGCCAAAGGCAGCTTTCCCTG
 GCAGGCTAAGATGGTTTCCACCATTAATCTCACCACAGGGGCCACGCTGATCAATGAACAATGGCTGCTG
 ACCACGGCTAAAAATCTTTCCTGAACCATTCAGAAAAATGCAACAGCGAAAGACATTGCCCTACTTTAA
 CACTCTATGTGGGGAAAAAGCAGCTTGTAGAGATTGAGAAGGTGGTTCTACACCTAACTACCACAGGT
 AGATATTGGGCTCATCAAACTCAACAGAAGGTGCTTGTAAATGAGAGAGTGATGCCCATCTGCCTACCT
 TCAAAGAATTATGCAGAAGTAGGGCGTGTGGGTACGTGTCTGGCTGGGGACAAAGTGACAACTTTAAAC
 TTAAGTACCATCTGAAGTATGTCATGCTGCCTGTGGCTGACCAATACGATTGCATAACGCATTATGAAGG
 CAGCACATGCCCAAATGGAAGGCACCGAAGAGCCCTGTAGGGGTGCAGCCATACTGAACGAACACACC
 TTCTGTGTCGGCATGTCTAAGTACCAGGAAGACACCTGCTATGGCGATGCGGGCAGTGCCTTTGCCGTTT
 ACACCTGGAGGAGGACACCTGGTACGCGCTGGGATCCTAAGCTTTGATAAGAGCTGTGCTGTGGCTGA
 GTATGGTGTGTATGTGAAGGTGACTTCCATCCAGCACTGGGTTCAGAAGACCATAGCTGAGAAC

ACGCGTACGCGGCCGCTCGAGCAGAACTCATCTCAGAAGAGGATCTGGCAGCAAATGATATCCTGGATT
 ACAAGGATGACGACGATAAGGTTTAA


[View online »](#)

Protein Sequence: >RC218300 representing NM_020995
Red=Cloning site Green=Tags(s)

MSDLGAVISLLLWGRQLFALYSGNDVTDISDDRFKPKPEIANGYVEHLFRYQCKNYYRLRTEGDGVYTLN
DKKQWINKAVGDKLPECEAVCGKPKNPANPVQRILGGHLDAGSFPWQAKMVSHHNLTTGATLINEQWLL
TTAKNLFNLHSENATAKDIAPTLTYVGKKQLVEIEKVVLHPNYHQVDIGLIKQKVLVNERVMPICLP
SKNYAEVGRVGYVSGWGQSDNFKLTDHLKYVMLPVADQYDCITHYEGSTCPKWKAPKSPVGVQPILEHT
FCVGMISKYQEDTCYGDAGSAFAVHDLEEDTWYAAGILSFDKSCAVAEGVYVKVTSIQHWVQKTIEN

TRTRPLEQKLISEEDLAANDILDYKDDDDKV

Chromatograms: https://cdn.origene.com/chromatograms/mk8076_d01.zip

Restriction Sites: SgfI-MluI

Cloning Scheme:



ACCN: NM_020995

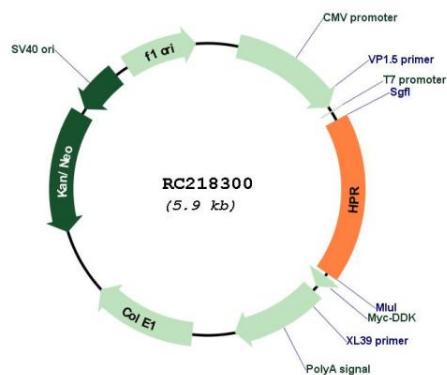
ORF Size: 1044 bp

OTI Disclaimer: Due to the inherent nature of this plasmid, standard methods to replicate additional amounts of DNA in E. coli are highly likely to result in mutations and/or rearrangements. Therefore, OriGene does not guarantee the capability to replicate this plasmid DNA. Additional amounts of DNA can be purchased from OriGene with batch-specific, full-sequence verification at a reduced cost. Please contact our customer care team at custsupport@origene.com or by calling 301.340.3188 option 3 for pricing and delivery.

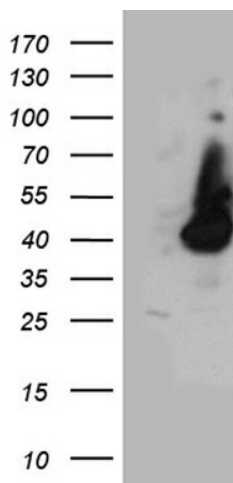
The molecular sequence of this clone aligns with the gene accession number as a point of reference only. However, individual transcript sequences of the same gene can differ through naturally occurring variations (e.g. polymorphisms), each with its own valid existence. This clone is substantially in agreement with the reference, but a complete review of all prevailing variants is recommended prior to use. [More info](#)

OTI Annotation:	This clone was engineered to express the complete ORF with an expression tag. Expression varies depending on the nature of the gene.
Components:	The ORF clone is ion-exchange column purified and shipped in a 2D barcoded Matrix tube containing 10ug of transfection-ready, dried plasmid DNA (reconstitute with 100 ul of water).
Reconstitution Method:	<ol style="list-style-type: none"> 1. Centrifuge at 5,000xg for 5min. 2. Carefully open the tube and add 100ul of sterile water to dissolve the DNA. 3. Close the tube and incubate for 10 minutes at room temperature. 4. Briefly vortex the tube and then do a quick spin (less than 5000xg) to concentrate the liquid at the bottom. 5. Store the suspended plasmid at -20°C. The DNA is stable for at least one year from date of shipping when stored at -20°C.
Note:	Plasmids are not sterile. For experiments where strict sterility is required, filtration with 0.22um filter is required.
RefSeq:	NM_020995.4
RefSeq Size:	1245 bp
RefSeq ORF:	1047 bp
Locus ID:	3250
UniProt ID:	P00739
Cytogenetics:	16q22.2
Domains:	CCP, Tryp_SPc
Protein Families:	Druggable Genome, Protease, Secreted Protein
MW:	38.8 kDa
Gene Summary:	This gene encodes a haptoglobin-related protein that binds hemoglobin as efficiently as haptoglobin. Unlike haptoglobin, plasma concentration of this protein is unaffected in patients with sickle cell anemia and extensive intravascular hemolysis, suggesting a difference in binding between haptoglobin-hemoglobin and haptoglobin-related protein-hemoglobin complexes to CD163, the hemoglobin scavenger receptor. This protein may also be a clinically important predictor of recurrence of breast cancer. [provided by RefSeq, Oct 2011]

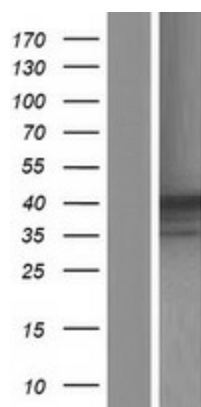
Product images:



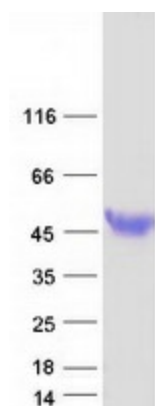
Circular map for RC218300



HEK293T cells were transfected with the pCMV6-ENTRY control (Cat# [PS100001], Left lane) or pCMV6-ENTRY HPR (Cat# RC218300, Right lane) cDNA for 48 hrs and lysed. Equivalent amounts of cell lysates (5 ug per lane) were separated by SDS-PAGE and immunoblotted with anti-HPR antibody (Cat# [TA890127]). Positive lysates [LY412112] (100ug) and [LC412112] (20ug) can be purchased separately from OriGene.



Western blot validation of overexpression lysate (Cat# [LY412112]) using anti-DDK antibody (Cat# [TA50011-100]). Left: Cell lysates from untransfected HEK293T cells; Right: Cell lysates from HEK293T cells transfected with RC218300 using transfection reagent MegaTran 2.0 (Cat# [TT210002]).



Coomassie blue staining of purified HPR protein (Cat# [TP318300]). The protein was produced from HEK293T cells transfected with HPR cDNA clone (Cat# RC218300) using MegaTran 2.0 (Cat# [TT210002]).