

## Product datasheet for **RC218277**

### Syntabulin (SYBU) (NM\_001099752) Human Tagged ORF Clone

#### Product data:

Product Type:	Expression Plasmids
Product Name:	Syntabulin (SYBU) (NM_001099752) Human Tagged ORF Clone
Tag:	Myc-DDK
Symbol:	Syntabulin
Synonyms:	GOLSYN; OCSYN; SNPHL
Mammalian Cell Selection:	Neomycin
Vector:	pCMV6-Entry (PS100001)
E. coli Selection:	Kanamycin (25 ug/mL)



[View online »](#)

**ORF Nucleotide Sequence:**

>RC218277 representing NM\_001099752  
 Red=Cloning site Blue=ORF Green=Tags(s)

TTTTGTAATACGACTCACTATAGGGCGGCCGGAATTCGTCGACTGGATCCGGTACCGAGGAGATCTGCC  
 GCC**CGGATCGCC**

ATGGGGCCCTCCGCGAGAGCAAGAAGGAGCACAGAGTGCAGCATCATGACAAGGAGATTTCTCGAAGCC  
 GAATTCGCCGTTGATTCTCGGCCCATATGCCCAACAACAGCACAAAGTGTCGCCAGCCTCTGAGTC  
 TCCTTTCTCTGAGGAAGAGAGCAGAGAGTTCAACCCAGCAGCTCTGGCGCTCAGCGAGGACCGTTAGC  
 AGCAACAGCTTCTGCTCAGATGACACAGGCTGTCTAGCAGCCAGTCAGTGTCTCCTGTGAAGACACCTT  
 CAGATGCTGGAACAGCCCCATTGGCTTTTGCCTGGAAGTGATGAAGGCTTCACCAGAAAGAAATGCAC  
 GATTGGAATGGTTGGTGAAGGAAGCATTAGTCTCTCGATATAAGAAGGAATCAAAGTCAGGCCTTGTG  
 AAACAGGTAGTGAAGCTGATTTAGTCTCTGAGCAGCACAGGCAGCATTTCGCTCCTGAGGTCCATA  
 TGTCGACTGCGGAAGCAAGCGTCTTCTTTCACGCAATCGAGTCTCATGGCGGAGTAATGGAGC  
 TTCGTCACACAAGCCTGGCAGCAGCCATCATCCCGCGGAAAAGGACCTTCTGTCCATGCTGTGCAGG  
 AATCAGCTGAGCCCTGTCAATATCCATCCAGTTATGCACCTTCTCCCAAGCAGTAGCAACTCAGGCT  
 CCTACAAAGGAAGCGACTGTAGCCCATCATGAGGCGTTCTGGAAGGTACATGTCTTGCGGTGAAAATCA  
 TGGTGTGACAGCCCCAAACCCAGAGCAGTATTTGACTCCACTGCAGCAGAAAGAGGTGACAGTGAGACAC  
 CTCAAACCAAGCTGAAGGAATCTGAGCGCCGACTCCATGAAAGGGAAAGTGAATCGTGGAGCTTAAGT  
 CCCAGCTGGCCCGCATGCGAGAGGACTGGATTGAGGAGGAGTGTACCCGGTAGAGGCCAGTTGGCACT  
 CAAAGAAGCCAGGAAAGAGATTAACAGCTCAACAGGTATCGAAACCATGCGGAGCAGCTTGGCTGAT  
 AAAGATAAAGGCATTAGAAATATTTGTGGACATAAACATCCAAACAAGAAGCTGGAGTCTCTCTTC  
 AGAGCATGGAGATGGCACACAGTGGCTCTCTGAGGGACGAAGTGTGCTAGACTTCCATGTGATTCCTC  
 AGAGAAGAGCTTAACCTCAACCCCTCTTGACACAATGGCAGATGGGTTATCTCTGGAAGAGCAGGTC  
 ACGGGGAAGGGGCTGACAGGGAGTACTGGTAGGAGATAGCATAGCCAACAGCACAGATTTGTTGATG  
 AGATAGTGACAGCCACCACCACAGAATCTGGTACCTGGAGCTTGTGCATTCCACCCCTGGGGCTAACGT  
 CCTGGAGCTGCTGCCATAGTCAATGGTTCAGGAGGAGGGCAGTGTGGTGGTGGAGCGAGCCGTTACAGCC  
 GACGTGGTGCCTACAGCCAGCCATCTCAGAGCTCATTAGAGTGTGCTGCAGAAGCTCCAGGACCCCT  
 GTCCTCGAGCTTGGCGTCCCCTGATGAGTCTGAACCAGACTCGATGGAGAGCTCCAGAGTCCCTCTC  
 TGCCTTAGTGGTTGATTTAACTCCAAGAAATCCAAACTCAGCCATCCTTTTGTCTCCCGTGGAGACCC  
 TACGCAATGTGGATGCAGAAGTTCATGCAACCGCCTCATGAGAGAGCTGGATTTGCAGCCTGCGTGG  
 AAGAGAGTTGGATGGTGTATCCCACTGGCTCGCGGGGGCGTGTGAGGCACTACTGGAGCAGCAGCTT  
 CCTGGTGGATCTCCTGGCTGTGGCTGCCCCGTTGGTCCCCACGGTCTGTGGGCATTCACTACTCAGAGA  
 GGGGAACGGATCCTGTGTATAACATCGGGCCTTGTCTAGGGGCTGTTGCGTGGTTGCCCTGCATTTCG  
 TCCGCCGACCGCTTCCGTATCAAAC

**ACGCGT**ACGCGGCCGCTCGAGCAGAACTCATCTCAGAAGAGGATCTGGCAGCAATGATATCCTGGATT  
 ACAAGGATGACGACGATAAGGTTTAA

**Protein Sequence:** >RC218277 representing NM\_001099752  
Red=Cloning site Green=Tags(s)

MGPLRESKKEHRVQHDKKIEISRSRIPRLILRPHMPQQQHKVSPASESPFSEESREFNPSSSSGRSARTVS  
 SNSFCDDTGCPSSQSVSPVKTPSDAGNSPIGFPCGSDGFTTRKCTIGMVGEGSIQSSRYKKEKSKGLV  
 KPGSEADFSSSSSTGSIISAPEVHMSTAGSKRSSSRNRPGRHRSNGASSHKPGSSPSPREKDLLSMLCR  
 NQLSPVNIHPSPYAPSSPSSNSGYSYKSDCSPIMRRSGRYMSCGENHGVPPNPEQYLTPLQQKEVTVRH  
 LKTKLKESERRLHERESEIVELKSQLARMREDWIEEECHRVEAQLALKEARKEIKQLKQVIETMRSSLAD  
 KDKGIQKYFVDINIQNKLESLLQSMEMAHSGSLRDELCLDFPCDSPEKSLTLNPPDLTMADGLSLEEQV  
 TGEADRELLVGDSEANSTDLDFEIVTATTESGDLVHSTPGANVLELLPIVMQEEGSSVVVERAVQT  
 DVVPYSPAISELIQSVLQKLQDPCPSL ASPDESEPDMSFPELSALVVDLTPRNPNSAIILLSPVETP  
 YANVDAEVHANRLMRELFDAACVEERLDGVIPLARGGVVRQYWSSSFLVDLLAVAAPVVPTVLWAFSTQR  
 GGTDVPVYIALLRGCCVVALHSLRRTAFRIKT

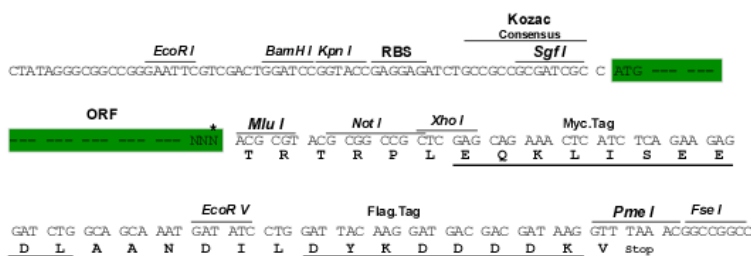
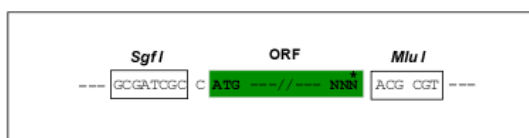
TRTRPLEQKLI SEEDLAANDILDYKDDDDKV

**Chromatograms:** [https://cdn.origene.com/chromatograms/mk8016\\_a01.zip](https://cdn.origene.com/chromatograms/mk8016_a01.zip)

**Restriction Sites:** SgfI-MluI

**Cloning Scheme:**

Cloning sites used for ORF Shuttling:



\* The last codon before the Stop codon of the ORF

**ACCN:** NM\_001099752

**ORF Size:** 1989 bp

**OTI Disclaimer:** The molecular sequence of this clone aligns with the gene accession number as a point of reference only. However, individual transcript sequences of the same gene can differ through naturally occurring variations (e.g. polymorphisms), each with its own valid existence. This clone is substantially in agreement with the reference, but a complete review of all prevailing variants is recommended prior to use. [More info](#)

**OTI Annotation:** This clone was engineered to express the complete ORF with an expression tag. Expression varies depending on the nature of the gene.

**Components:** The ORF clone is ion-exchange column purified and shipped in a 2D barcoded Matrix tube containing 10ug of transfection-ready, dried plasmid DNA (reconstitute with 100 ul of water).

**Reconstitution Method:**

1. Centrifuge at 5,000xg for 5min.
2. Carefully open the tube and add 100ul of sterile water to dissolve the DNA.
3. Close the tube and incubate for 10 minutes at room temperature.
4. Briefly vortex the tube and then do a quick spin (less than 5000xg) to concentrate the liquid at the bottom.
5. Store the suspended plasmid at -20°C. The DNA is stable for at least one year from date of shipping when stored at -20°C.

**RefSeq:** [NM\\_001099752.1](#), [NP\\_001093222.1](#)

**RefSeq Size:** 3097 bp

**RefSeq ORF:** 1992 bp

**Locus ID:** 55638

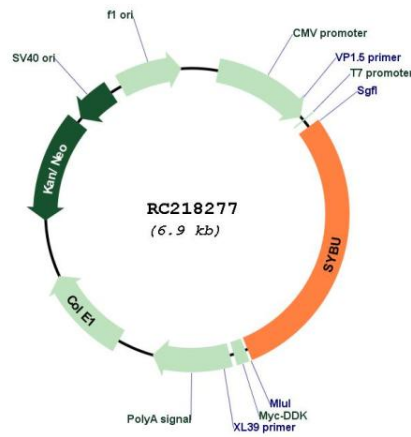
**UniProt ID:** [Q9NX95](#)

**Cytogenetics:** 8q23.2

**MW:** 72.2 kDa

**Gene Summary:** Syntabulin/GOLSYN is part of a kinesin motor-adaptor complex that is critical for the anterograde axonal transport of active zone components and contributes to activity-dependent presynaptic assembly during neuronal development (Cai et al., 2007 [PubMed 17611281]).[supplied by OMIM, Mar 2008]

**Product images:**



Circular map for RC218277