

Product datasheet for **RC218275**

MTIB (NM_005947) Human Tagged ORF Clone

Product data:

Product Type:	Expression Plasmids
Tag:	Myc-DDK
Symbol:	MTIB
Synonyms:	MT-1B; MT-1B; MT1; MT1Q; MTP
Mammalian Cell Selection:	Neomycin
Vector:	pCMV6-Entry (PS100001)
E. coli Selection:	Kanamycin (25 ug/mL)

ORF Nucleotide Sequence: >RC218275 ORF sequence
Red=Cloning site Blue=ORF Green=Tags(s)

TTTGTGAATACGACTCACTATAGGGCGGCCGGAATTCGTCGACTGGATCCGGTACCGAGGAGATCTGCC
GCC**CGATCGCC**

ATGGATCCCAACTGCTCCTGCACCACAGGTGGCTCCTGTGCCTGCGCCGGCTCCTGCAAGTGCAAAGAGT
GCAATGTACTCTCTGCAAGAAGTGCTGCTGCTCTTGTGCCCCGTGGGCTGTGCCAAGTGTGCCAGGG
CTGTGCTGCAAAGGCTCATCAGAGAAGTGCCGCTGCTGTGCC

ACGCGTACGCGGCCGCTCGAGCAGAACTCATCTCAGAAGAGGATCTGGCAGCAAATGATATCCTGGATT
ACAAGGATGACGACGATAAGGTTTAA

Protein Sequence: >RC218275 protein sequence
Red=Cloning site Green=Tags(s)

MDPNCSCCTGGSCACAGSCKCKECKTSCKKCCSCCPVGCAKCAQGCVCCKGSSEKCRCCA

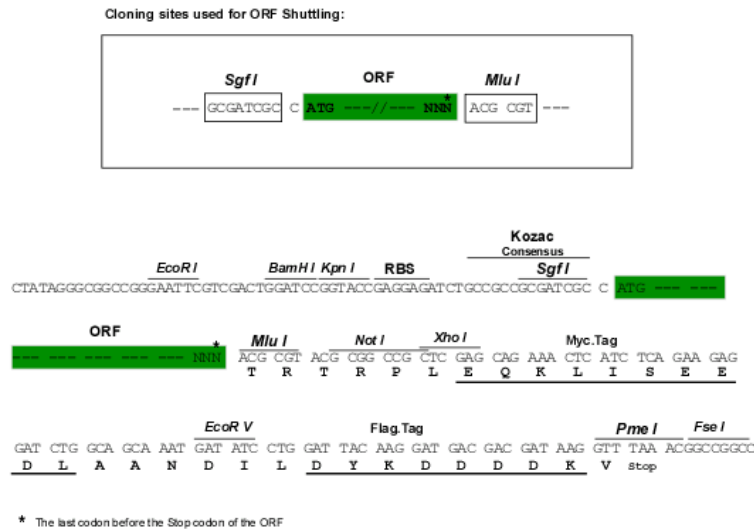
TRTRPLEQKLISEEDLAANDILDYKDDDDKV

Chromatograms: https://cdn.origene.com/chromatograms/mk6473_e03.zip

Restriction Sites: SgfI-MluI



Cloning Scheme:



ACCN: NM_005947

ORF Size: 183 bp

OTI Disclaimer: The molecular sequence of this clone aligns with the gene accession number as a point of reference only. However, individual transcript sequences of the same gene can differ through naturally occurring variations (e.g. polymorphisms), each with its own valid existence. This clone is substantially in agreement with the reference, but a complete review of all prevailing variants is recommended prior to use. [More info](#)

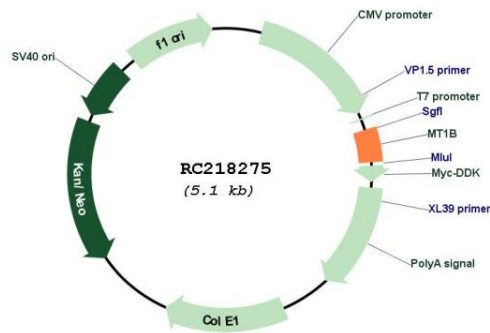
OTI Annotation: This clone was engineered to express the complete ORF with an expression tag. Expression varies depending on the nature of the gene.

Components: The ORF clone is ion-exchange column purified and shipped in a 2D barcoded Matrix tube containing 10ug of transfection-ready, dried plasmid DNA (reconstitute with 100 ul of water).

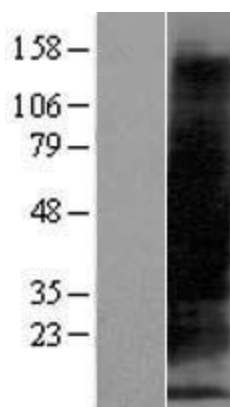
Reconstitution Method:

1. Centrifuge at 5,000xg for 5min.
2. Carefully open the tube and add 100ul of sterile water to dissolve the DNA.
3. Close the tube and incubate for 10 minutes at room temperature.
4. Briefly vortex the tube and then do a quick spin (less than 5000xg) to concentrate the liquid at the bottom.
5. Store the suspended plasmid at -20°C. The DNA is stable for at least one year from date of shipping when stored at -20°C.

Note:	Plasmids are not sterile. For experiments where strict sterility is required, filtration with 0.22um filter is required.
RefSeq:	<u>NM_005947.3</u>
RefSeq Size:	403 bp
RefSeq ORF:	186 bp
Locus ID:	4490
UniProt ID:	<u>P07438</u>
Cytogenetics:	16q13
MW:	6.1 kDa
Gene Summary:	The protein encoded by this gene binds heavy metals and protects against toxicity from heavy metal ions. This gene is found in a cluster of similar genes on chromosome 16. [provided by RefSeq, Jul 2016]

Product images:

Circular map for RC218275



Western blot validation of overexpression lysate (Cat# [LY416964]) using anti-DDK antibody (Cat# [TA50011-100]). Left: Cell lysates from un-transfected HEK293T cells; Right: Cell lysates from HEK293T cells transfected with RC218275 using transfection reagent MegaTran 2.0 (Cat# [TT210002]).