

## Product datasheet for **RC218274**

### **SERPINA10 (NM\_001100607) Human Tagged ORF Clone**

#### **Product data:**

Product Type:	Expression Plasmids
Product Name:	SERPINA10 (NM_001100607) Human Tagged ORF Clone
Tag:	Myc-DDK
Symbol:	SERPINA10
Synonyms:	PZI; ZPI
Mammalian Cell Selection:	Neomycin
Vector:	pCMV6-Entry (PS100001)
E. coli Selection:	Kanamycin (25 ug/mL)



[View online »](#)

**ORF Nucleotide Sequence:**

>RC218274 ORF sequence  
 Red=Cloning site Blue=ORF Green=Tags(s)

TTTTGTAATACGACTCACTATAGGGCGGCCGGAATTCGTCGACTGGATCCGGTACCGAGGAGATCTGCC  
 GCC**CGCATCGCC**

ATGAAGGTGGTGCCAAGTCTCCTGCTCTCCGCTCCTCGGCACAGGTGTGGCTGGTACCCGGCTTGCCCC  
 CCAGTCTCAGTCGCCAGAGACCCAGCCCTCAGAACCAGACCAGCAGGGTAGTGCAGGCTCCAAGGA  
 GGAAGAGGAAGATGAGCAGGAGGCCAGCGAGGAGAAGGCCAGTGAGGAAGAGAAAGCCTGGCTGATGGCC  
 AGCAGGCAGCAGCTTGCCAAGGAGACTTCAAACCTCGATTACAGCCTGCTGCGAAAGATCTCCATGAGGC  
 ACGATGGCAACATGGTCTTCTCTCCATTTGGCATGTCTTGGCCATGACAGGCTTGATGTGGGGCCAC  
 AGGGCCGACTGAAACCCAGATCAAGAGAGGGCTCCACTTGCAGGCCCTGAAGCCACCAAGCCGGGCTC  
 CTGCCCTCCCTTTAAGGGACTCAGAGAGACCCTCTCCGCAACCTGGAAGTGGGCTCACACAGGGGA  
 GTTTTGCCTTCATCCACAAGGATTTTGATGTCAAAGAGACTTTCTCAATTTATCCAAGAGGATTTTTGA  
 TACAGAGTGCCTATGAATTTTCGCAATGCCTCACAGGCCAAAAGGCTCATGAATCATTACATTAAC  
 AAAGAGACTCGGGGAAAATTCCCAAACGTTTGATGAGATTAATCCTGAAACCAAAATTAATTTCTGTGG  
 ATTACATCTTGTCAAAGGAAAATGGTTGACCCCATTTGACCCTGTCTTACCGAAGTCGACACTTTCCA  
 CCTGGACAAGTACAAGACCATTAAGGTGCCATGATGTACGGTGCAGGCAAGTTTGCCTCCACCTTTGAC  
 AAGAATTTTCTGTGTCATGTCTCAAACCTGACCTACCAAGGAAATGCCACCATGCTGGTGGTCTCATGG  
 AGAAAAATGGGTGACCACCTCGCCCTGAAGACTACCTGACCACAGACTTGGTGGAGACATGGCTCAGAAA  
 CATGAAAACAGAAACATGGAAGTTTCTTTCCGAAGTTCAAGCTAGATCAGAAGTATGAGATGCATGAG  
 CTGCTTAGGCAGATGGGAATCAGAAGAATCTTCTCACCTTTGCTGACCTTAGTGAACCTCAGCTACTG  
 GAAGAAATCTCCAAGTATCCAGGGTTTTACAAAGAACAGTGATTGAAGTTGATGAAAGGGGCACTGAGGC  
 AGTGGCAGGAATCTGTGACAAAATTAAGTCTTATTCCATGCCTCCTGTCATCAAAGTGGACCGCCATTT  
 CATTTCATGATCTATGAAGAAACCTCTGAATGCTTCTGTTTCTGGGCAGGGTGGTGAATCCGACTCTCC  
 TA

**ACGCGT**ACGCGGCCGCTCGAGCAGAAACTCATCTCAGAAGAGGATCTGGCAGCAAATGATATCCTGGATT  
 ACAAGGATGACGACGATAAGGTTTAA

**Protein Sequence:**

>RC218274 protein sequence  
 Red=Cloning site Green=Tags(s)

MKVVPSLLL SVLLAQVWLVPLAPSPQSPETPAPQNQTSRVVQAPKEEEDEQEASEEKASEEEKAWLMA  
 SRQLAKETS NFGFSLLRKISMRHDGNMVFSPFGMSLAMTGLMLGATGPTETQIKRGLHLQALKPTKPL  
 LPSLFKGLRETL SRNLELGLTQGSFAFIHKDFDVKETFNLSKRYFDTECVPMNFRNASQAKRLMNHYIN  
 KETRGKIPKLFDEINPETKLILVDYILFKGKWLTPFDVPFTEVDTFHLDKYKTIKVPMMYGAGKFASTFD  
 KNFRCHVLKLPYQGNATMLVVLMEKMGDHLALEDYLTDDL VETWLRNMKTRNMEVFFPKFKLDQKYEMHE  
 LLRQMGIRRIFFSPFDLSEL SATGRNLQVSRVLQRTVIEVDERGTEAVAGILSEITAYSMPPIKVDPRP  
 HFMIYEETSGMLLFLGRVNP TLL

**TR**TRPLEQKLISEEDLAANDILDYKDDDDKV

**Chromatograms:**

[https://cdn.origene.com/chromatograms/mk6068\\_c09.zip](https://cdn.origene.com/chromatograms/mk6068_c09.zip)

**Restriction Sites:**

Sgfl-Mlul

**Cloning Scheme:**


**ACCN:** NM\_001100607

**ORF Size:** 1332 bp

**OTI Disclaimer:** The molecular sequence of this clone aligns with the gene accession number as a point of reference only. However, individual transcript sequences of the same gene can differ through naturally occurring variations (e.g. polymorphisms), each with its own valid existence. This clone is substantially in agreement with the reference, but a complete review of all prevailing variants is recommended prior to use. [More info](#)

**OTI Annotation:** This clone was engineered to express the complete ORF with an expression tag. Expression varies depending on the nature of the gene.

**Components:** The ORF clone is ion-exchange column purified and shipped in a 2D barcoded Matrix tube containing 10ug of transfection-ready, dried plasmid DNA (reconstitute with 100 ul of water).

**Reconstitution Method:**

1. Centrifuge at 5,000xg for 5min.
2. Carefully open the tube and add 100ul of sterile water to dissolve the DNA.
3. Close the tube and incubate for 10 minutes at room temperature.
4. Briefly vortex the tube and then do a quick spin (less than 5000xg) to concentrate the liquid at the bottom.
5. Store the suspended plasmid at -20°C. The DNA is stable for at least one year from date of shipping when stored at -20°C.

**RefSeq:** [NM\\_001100607.3](#)

**RefSeq Size:** 2134 bp

**RefSeq ORF:** 1335 bp

**Locus ID:** 51156

**UniProt ID:** [Q9UK55](#)

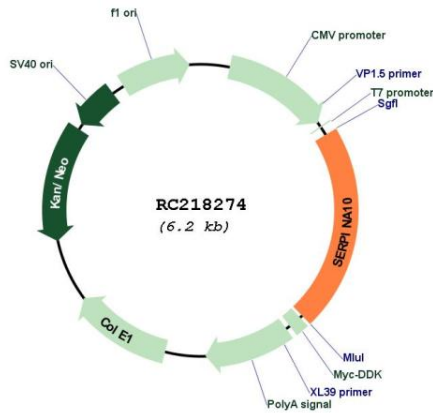
**Cytogenetics:** 14q32.13

**Protein Families:** Druggable Genome, Secreted Protein

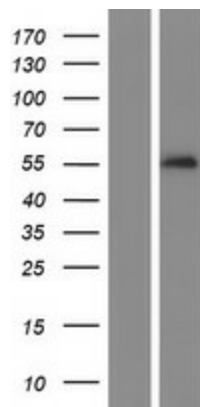
**MW:** 50.7 kDa

**Gene Summary:** The protein encoded by this gene belongs to the serpin family. It is predominantly expressed in the liver and secreted in plasma. It inhibits the activity of coagulation factors Xa and XIa in the presence of protein Z, calcium and phospholipid. Mutations in this gene are associated with venous thrombosis. Alternatively spliced transcript variants have been found for this gene.[provided by RefSeq, May 2010]

**Product images:**



Circular map for RC218274



Western blot validation of overexpression lysate (Cat# [LY420280]) using anti-DDK antibody (Cat# [TA50011-100]). Left: Cell lysates from untransfected HEK293T cells; Right: Cell lysates from HEK293T cells transfected with RC218274 using transfection reagent MegaTran 2.0 (Cat# [TT210002]).