

Product datasheet for **RC218273**

MTSS1 (NM_014751) Human Tagged ORF Clone

Product data:

Product Type:	Expression Plasmids
Product Name:	MTSS1 (NM_014751) Human Tagged ORF Clone
Tag:	Myc-DDK
Symbol:	MTSS1
Synonyms:	MIM; MIMA; MIMB
Mammalian Cell Selection:	Neomycin
Vector:	pCMV6-Entry (PS100001)
E. coli Selection:	Kanamycin (25 ug/mL)



[View online »](#)

ORF Nucleotide Sequence:

>RC218273 representing NM_014751
 Red=Cloning site Blue=ORF Green=Tags(s)

TTTTGTAATACGACTCACTATAGGGCGGCCGGGAATTCGTCGACTGGATCCGGTACCGAGGAGATCTGCC
 GCC**CGGATCGCC**

ATGGAGGCTGTGATTGAGAAGGAATGCAGCGCGCTCGGAGGCCTCTCCAGACCATCATCAGCGACATGA
 AGGGGAGCTATCCAGTTTGGGAAGATTTATAAACAAAGCAGGAAAGCTGCAGTCCCAGCTTCGGACAAC
 AGTAGTAGCAGCAGCTGCCTTCTTGAGCGCCTTTCAGAAAAGTGGCTGACATGGCCACCAACACACGTGGT
 GGGACCAGGGAGATTGGATCTGCTCTACCAGGATGTGCATGAGGCACAGAAGCATTGAAGCCAAGCTGA
 GGCAGTTTTGAGCGCTTAATTGATTGTCTGATAAACCCACTTCAAGAACAGATGGAAGAATGGAAGAA
 AGTGGCCAACCAGCTGGATAAAGACCACGCAAAAGAATAAAGAAAGCCCGCAAGAGATAAAAAAGAAG
 TCCTCGGATACGCTGAACTGCAGAAGAAAGCAAAAAAGGGAGAGGTGATATCCAGCCTCAGTTGGACA
 GTGCTCTCCAAGATGTCAATGATAAGTATCTCTATTGGAAGAAACAGAAAAGCAGGCTGTCCGGAAGGC
 TTTGATTGAAGAAGCTGGCCGATTCTGTACCTTCTCTATGCTGCGGCCAGTGATTGAAGAAGAATC
 TCAATGCTAGGGGAAATAACCCACCTTCAGACCATCTCGGAAGATCTAAAAGCCTGACCATGGACCCTC
 ACAAAGTCCCTCCTCAAGTGAACAGGTGATTCTGGACTTGAAAGTTCTGATTACAGCTGGTCTGATCA
 GACGCCACCCTCTCCCCAGCACCACCATGTCCAGAAAGTCCAGTGTCTGCAGCAGCCTGAACAGTGTG
 AACAGCAGTGACTCCCGTCCAGCGGCTCCCACTCGCATTCCCCAGCTCACATTACCGCTACCGCAGCT
 CCAACCTGGCCAGCAGGCTCCTGTGAGGCTGTCCAGCGTGTCTCCCATGACTCAGGATTCATATCCCA
 GGATGCCTTCCAGTCCAAGTACCATCCCCATGCGCCAGAGGCCCCCAACAGTTGTCTAACGGGTTT
 TCTCACTATAGTTTATCAAGTGAAGTCCACGTGGGGCCACGGGTGCAGGCCTTTTCCCTCATTGCCTGC
 CTGCCCTCCCGCTGTCCCTCGGTCACCTCTGTCCACCTTCCAGACTACGCTCATTATTACACCATTTG
 GCCCGGCATGTTCCCGTCACTCAGATCCCTAGCTGGAAGGACTGGGCTAAGCCTGGGCCCTATGACCAG
 CCTCTGGTGAACACCCTGCAGCGCCGAAAGAGAAGCGAGAACCAGCCCAACGGGGGAGGACCCACTA
 CCGCCAGCGGCCACCTGCAGCAGCTGAGGAGGCTCAGAGACCAGGAGCATGACTGTATCGGCTGCCAC
 CAGGCCTGGTGAAGAGATGGAGGCTTGTGAGGAGCTGGCCCTGGCCCTGTCTCGGGGCTGCAGCTGGAC
 ACCCAGAGGAGCAGCCGGGACTCGTTCAGTGTCTCCAGCGGCTACAGCACCCAGACAACCACCCCTGCT
 GCTCTGAGGACACCATCCCTTCCAAGTTTCAGATTATGATTATTTCTCTGTAAGTGGTACCAGGAGGC
 AGATCAGCAGGAGTTCGACAAGTCTCCACCATTCCAAGAAACAGCGACATCAGCCAGTCTACCGACGG
 ATGTTCCAAGCCAAGCGTCCAGCCTCAACTGCTGGCCTCCCACCACCCTGGGACCTGCTATGGTCACTC
 CAGGGGTTGCAACTATCCGACGGACCCCTTCCACCAAGCCTTCTGTCCGCGGGGAACCATTGGAGCTGG
 TCCATCCCCATCAAGACACCCGTGATCCCTGTCAAGACCCCAACCGTCCCAGACCTCCCAGGGGTGTTG
 CCAGCCCTCCAGATGGGCCAGAAGAGCGGGGGGAGCACAGCCCTGAGTCGCCATCTGTGGGTGAGGGCC
 CCCAAGGTGTACCAGCATGCCCTCCTCAATGTGGAGCGGCAAGCTTCCGTTAACCCCTCCACTTCCAGG
 CCCGAAGCCAGTATCCCTGAGGAGCACAGACAGGCAATTCCAGAAAGTGAAGCTGAAGACCAGGAACGG
 GAACCCCAAGTGCCACTGTCTCCCAGGCCAGATTCCAGAGAGTGACCTGCAGACCTGAGCCCAAGGG
 ATACTCCAAGGAGAAGACATGCTGAACGCCATCCGAAGGGCGTGAACTGAAGAAGACCACGACAAA
 CGATCGCTCAGCCCTCGCTTTTCT

ACGCGTACGCGGCCGCTCGAGCAGAAACTCATCTCAGAAGAGGATCTGGCAGCAAATGATATCCTGGATT
 ACAAGGATGACGACGATAAGGTTTAA

Protein Sequence: >RC218273 representing NM_014751
 Red=Cloning site Green=Tags(s)

```
MEAVIEKECSALGGLFQTIISDMKGSYPVWEDFINKAGKLQSQLRTTVAAAAFLDAFQKVADMATNTRG
GTREIGSALTRMCMRHRSEAKLRQFSSALIDCLINPLQEQMEEWKVANQLDKDHAKEYKKARQEIKKK
SSDTLKLQKKAKKGRGDIQPQLDSALQDVNDKYLLLEETEKKAVRKALIEERGRFCTTFSMLRPVIEEEI
SMLGEITHLQTI SEDLKSLTMDPHKLPSSSEQVILDLKGSYDYSWSYQTPPSSPSTTMSRKSSVCSSLNSV
NSSDSRSGSHSPSSHYRYSNLAQQAPVRLSSVSHDSGFISQDAFQSKSPSPMPPEAPNQLSNGF
SHYLSSESHPVPTGAGLFPHCLPASRLLPRVTSVHLPDYAHYYTIGPGMFPSSQIPSWKDWAQKPGPYDQ
PLVNTLQRRKEKREPDNPGGPTTASGPPAAAAEAQRPRSMTVSAATRPGEEMEACEELALALSRGLQLD
TQRSSRDSLQCSSGYSTQTTTPCCSEDTIPSQVSDYDYFSVSGDQEQEFDKSSTIPRNSDISQSRYR
MFQAKRPASTAGLPTTLGPAMVTPGVATIRRTPTKPSVRRGTIGAGPIKTPVIPVKTPVDPDLPGLV
PAPPDGP EERGEHSPESPSVGE GPQVT SMPSSMWSGQASVNPPLPGPKPSIPEEHRQAIP ESEAEDQER
EPPSATVSPGQIPESDPADLSPRDT PQEDMLNAIRRGVCLKKTTTNDRSAPRFS
```

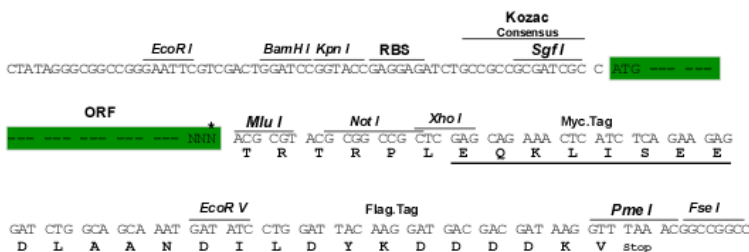
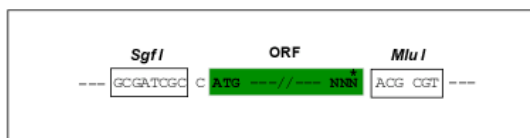
TRTRPLEQKLISEEDLAANDILDYKDDDDKV

Chromatograms: https://cdn.origene.com/chromatograms/mg3911_g09.zip

Restriction Sites: SgfI-MluI

Cloning Scheme:

Cloning sites used for ORF Shuttling:



* The last codon before the Stop codon of the ORF

ACCN: NM_014751

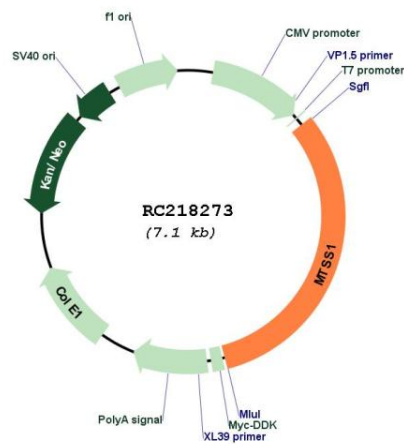
ORF Size: 2265 bp

OTI Disclaimer: The molecular sequence of this clone aligns with the gene accession number as a point of reference only. However, individual transcript sequences of the same gene can differ through naturally occurring variations (e.g. polymorphisms), each with its own valid existence. This clone is substantially in agreement with the reference, but a complete review of all prevailing variants is recommended prior to use. [More info](#)

OTI Annotation: This clone was engineered to express the complete ORF with an expression tag. Expression varies depending on the nature of the gene.

Components:	The ORF clone is ion-exchange column purified and shipped in a 2D barcoded Matrix tube containing 10ug of transfection-ready, dried plasmid DNA (reconstitute with 100 ul of water).
Reconstitution Method:	<ol style="list-style-type: none"> 1. Centrifuge at 5,000xg for 5min. 2. Carefully open the tube and add 100ul of sterile water to dissolve the DNA. 3. Close the tube and incubate for 10 minutes at room temperature. 4. Briefly vortex the tube and then do a quick spin (less than 5000xg) to concentrate the liquid at the bottom. 5. Store the suspended plasmid at -20°C. The DNA is stable for at least one year from date of shipping when stored at -20°C.
RefSeq:	<u>NM_014751.6</u>
RefSeq Size:	4932 bp
RefSeq ORF:	2268 bp
Locus ID:	9788
UniProt ID:	<u>O43312</u>
Cytogenetics:	8q24.13
Domains:	WH2
Protein Families:	Druggable Genome
MW:	82.1 kDa
Gene Summary:	May be related to cancer progression or tumor metastasis in a variety of organ sites, most likely through an interaction with the actin cytoskeleton.[UniProtKB/Swiss-Prot Function]

Product images:



Circular map for RC218273