

Product datasheet for **RC218270**

SCARB1 (NM_001082959) Human Tagged ORF Clone

Product data:

Product Type:	Expression Plasmids
Product Name:	SCARB1 (NM_001082959) Human Tagged ORF Clone
Tag:	Myc-DDK
Symbol:	SCARB1
Synonyms:	CD36L1; CLA-1; CLA1; HDLQTL6; SR-BI; SRB1
Mammalian Cell Selection:	Neomycin
Vector:	pCMV6-Entry (PS100001)
E. coli Selection:	Kanamycin (25 ug/mL)



[View online »](#)

ORF Nucleotide Sequence:

>RC218270 representing NM_001082959
 Red=Cloning site Blue=ORF Green=Tags(s)

TTTTGTAATACGACTCACTATAGGGCGGCCGGAATTCGTCGACTGGATCCGGTACCGAGGAGATCTGCC
 GCC**CGGATCGCC**

ATGGGCTGCTCCGCCAAAGCGCGCTGGGCTGCCGGGGCGCTGGGCGTCGCGGGGCTACTGTGCGCTGTGC
 TGGGCGCTGTCATGATCGTGATGGTGCCGTCGCTCATCAAGCAGCAGGTCCTTAAGAACGTGCGCATCGA
 CCCCAGTAGCCTGTCTTCAACATGTGGAAGGAGATCCCTATCCCCTTCTATCTCTCCGCTACTTCTTT
 GACGTCATGAACCCAGCGAGATCCTGAAGGGCGAGAAGCCGAGGTGCGGGAGCGGGGCCCTACGTGT
 ACAGGGAGTTCAGGCACAAAAGCAACATCACCTTCAACAACAACGACACCGTGTCTTCTCGAGTACCG
 CACCTTCCAGTTCAGCCCTCCAAGTCCCACGGCTCGGAGAGCGACTACATCGTCATGCCAACATCCTG
 GTCTTGGTGCGGCGGTGATGATGGAGAATAAGCCCATGACCCTGAAGCTCATCATGACCTTGGCATTCA
 CCACCCTCGGCGAACGTGCCTTCATGAACCGCGCTGTGGGTGAGATCATGTGGGGCTACAAGACCCCT
 TGTGAATCTCATCAACAAGTACTTCCAGGCATGTTCCCTTCAAGGACAAGTTCGGATTATTTGCTGAG
 CTAACAACCTCCGACTCTGGGCTTTCACGGTGTTCACGGGGTCCAGAACATCAGCAGGATCCACCTCG
 TGGACAAGTGGAAACGGGCTGAGCAAGTTGACTTCTGGCATTCCGATCAGTGCAACATGATCAATGGAAC
 TTCTGGGCAAATGTGGCCGCCCTTCATGACTCCTGAGTCTCGCTGGAGTTTACAGCCCGGAGGCGCTGC
 CGATCCATGAAGCTAATGTACAAGGAGTCAGGGGTGTTTGAAGGCATCCCCACCTATCGCTTCGTGGCTC
 CAAAACCTGTTTGCCAAACGGGTCCATCTACCCACCAACGAAGGCTTCTGCCGTCGCTGGAGTCTGG
 AATTCAGAACGTCAGCACCTGCAGGTTCAAGTCCCCCTGTTTCTCTCCATCCTCACTTCTCAACGCT
 GACCCGGTCTGGCAGAAGCGGTGACTGGCTGCACCTAACCAGGAGGCACACTCCTTGTCTCTGGACA
 TCCACCCGGTACGGGAATCCCCATGAAGTCTCTGTGAACTGCAGTGCAGCTCAGCTCAGCTCAGCTCAG
 CGCAGGCATTGGACAAACTGGGAAGATTGAGCCTGTGGTCTGCCGCTGCTCTGGTTTGAGAGAGCGGG
 GCCATGGAGGGGAGACTCTTACACATTCTACACTCAGCTGGTGTGATGCCAAAGGTGATGCACTATG
 CCCAGTACGTCCTCTGGCGCTGGGCTGCGTCCTGCTGCTGGTCCCTGTCTGCTGCTGCTGCTGCTGCTG
 AGGTCTGAGGACACCGTGCAGCCAGCCAGGCTGGCCGCTGGGCTGACCGGCCCCAGCCCTACACC
 CCGCTTCTCCGGACTCTCCAGCGGACAGCCCCAGCCCCACAGCC

ACGCGTACGCGGCCGCTCGAGCAGAAACTCATCTCAGAAGAGGATCTGGCAGCAAATGATATCTGGATT
 ACAAGGATGACGACGATAAGGTTTAA

Protein Sequence:

>RC218270 representing NM_001082959
 Red=Cloning site Green=Tags(s)

MGCSAKARWAAGALGVAGLLCAVLGAVMIVMPSLIKQVQVKNVRIDPSSLFNMWKEIIPFYLSVYFF
 DVMNPSEILKGEKPQVRERGPYVYREFRHKSNITFNNNDTVSFLEYRTFQFQPSKSHGSESDYIVMPNIL
 VLGAAVMMENKPMTLKLIIMTLAF TTLGERAFMNRVAVGEIMWGYKDPLVNLINKYFPGMFPFKDKFLFAE
 LNNSDSGLFTVFTGVQNI SRIHLVDKWNGLSKVDFWHSQCNMINGTSGQMPPFMTPESSLEFYSPAC
 RSMKLMYKESGVFEGIPTYRFVAPKTLFANGSIYPPNEGFPCPLESGIQNVSTCRFSAPLFLSHPHFLNA
 DPVLAEAVTGLHPNQEASLFLDIHPVTGIPMNCVSKLQLSLYMKSVAGIGQTGKIEPVVPLLWF AESG
 AMEGETLHTFYTLVLMPKVMHYAQYVLLALGCVLLLVPVICQIRSQGPEDTVSQPLAAGPDRPPSPYT
 PLLPDSPSGQPPSPTA

TRTRPLEQKLISEEDLAANDILDYKDDDDKV

Chromatograms:

https://cdn.origene.com/chromatograms/mg3795_f08.zip

Restriction Sites:

SgfI-MluI

Cloning Scheme:


ACCN: NM_001082959

ORF Size: 1518 bp

OTI Disclaimer: The molecular sequence of this clone aligns with the gene accession number as a point of reference only. However, individual transcript sequences of the same gene can differ through naturally occurring variations (e.g. polymorphisms), each with its own valid existence. This clone is substantially in agreement with the reference, but a complete review of all prevailing variants is recommended prior to use. [More info](#)

OTI Annotation: This clone was engineered to express the complete ORF with an expression tag. Expression varies depending on the nature of the gene.

Components: The ORF clone is ion-exchange column purified and shipped in a 2D barcoded Matrix tube containing 10ug of transfection-ready, dried plasmid DNA (reconstitute with 100 ul of water).

Reconstitution Method:

1. Centrifuge at 5,000xg for 5min.
2. Carefully open the tube and add 100ul of sterile water to dissolve the DNA.
3. Close the tube and incubate for 10 minutes at room temperature.
4. Briefly vortex the tube and then do a quick spin (less than 5000xg) to concentrate the liquid at the bottom.
5. Store the suspended plasmid at -20°C. The DNA is stable for at least one year from date of shipping when stored at -20°C.

RefSeq: [NM_001082959.1](#), [NP_001076428.1](#)

RefSeq Size: 2630 bp

RefSeq ORF: 1521 bp

Locus ID: 949

UniProt ID: [Q8WTV0](#)

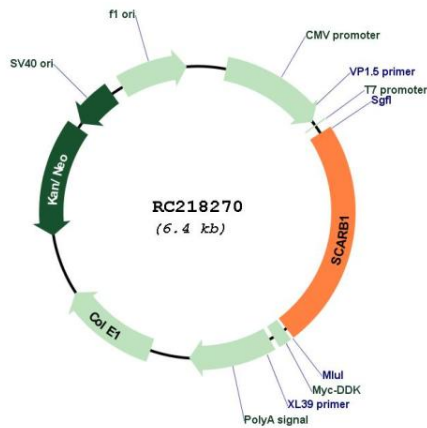
Cytogenetics: 12q24.31

Protein Families: Druggable Genome, Transmembrane

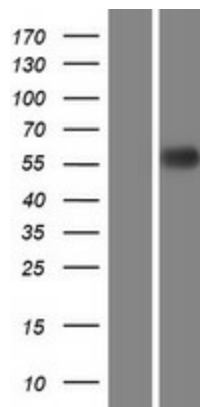
MW: 56 kDa

Gene Summary: The protein encoded by this gene is a plasma membrane receptor for high density lipoprotein cholesterol (HDL). The encoded protein mediates cholesterol transfer to and from HDL. In addition, this protein is a receptor for hepatitis C virus glycoprotein E2. Several transcript variants encoding different isoforms have been found for this gene.[provided by RefSeq, Jan 2019]

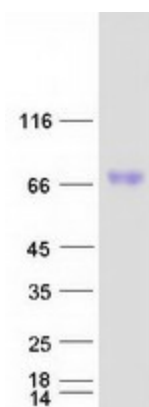
Product images:



Circular map for RC218270



Western blot validation of overexpression lysate (Cat# [LY421197]) using anti-DDK antibody (Cat# [TA50011-100]). Left: Cell lysates from untransfected HEK293T cells; Right: Cell lysates from HEK293T cells transfected with RC218270 using transfection reagent MegaTran 2.0 (Cat# [TT210002]).



Coomassie blue staining of purified SCARB1 protein (Cat# [TP318270]). The protein was produced from HEK293T cells transfected with SCARB1 cDNA clone (Cat# RC218270) using MegaTran 2.0 (Cat# [TT210002]).