

Product datasheet for **RC218250**

NOR1 (NR4A3) (NM_006981) Human Tagged ORF Clone

Product data:

Product Type:	Expression Plasmids
Product Name:	NOR1 (NR4A3) (NM_006981) Human Tagged ORF Clone
Tag:	Myc-DDK
Symbol:	NOR1
Synonyms:	CHN; CSMF; MINOR; NOR1
Mammalian Cell Selection:	Neomycin
Vector:	pCMV6-Entry (PS100001)
E. coli Selection:	Kanamycin (25 ug/mL)



[View online »](#)

ORF Nucleotide Sequence:

>RC218250 representing NM_006981
 Red=Cloning site Blue=ORF Green=Tags(s)

TTTTGTAATACGACTCACTATAGGGCGGCCGGAATTCGTCGACTGGATCCGGTACCGAGGAGATCTGCC
 GCC**CGGATCGCC**

ATGCCCTGCGTCCAAGCCCAATATAGCCCTTCCCCTCCAGGTTCCAGTTATGCGGCGCAGACATACAGT
 CGGAATACACCACGGAGATCATGAACCCGACTACACCAAGCTGACCATGGACCTTGGCAGCACTGAGT
 CACGGCTACAGCCACCACGTCCCTGCCAGCATCAGTACCTTCGTGGAGGGCTACTCGAGCAACTACGAA
 CTAAGCCTTCTCGGTGTACCAATGCAGCGGCCCTTGATCAAAGTGGAGGAGGGGCGGGCGCCAGCT
 ACCATCACCATCACCACCACCACCACCACCACCACCACCACCACCAGCAGCAGCATCAGCAGCCATCCAT
 TCCTCCAGCTCCAGCCCGGAGGACGAGGTGCTGCCAGCACCTCCATGTACTTCAAGCAGTCCCCACCG
 TCCACCCACCACGCCGCCCTTCCCCCGCAGGCGGGGCGTTATGGGACGAGGCACTGCCCTCGGCGC
 CCGGCTGCATCGACCCCGCCGCTGCTGGACCCGCCGATGAAGCGGTCCCACGGTGGCCGGCGCGCG
 CTTCCCGCTTCCACTCAAGCCCTCGCCGCCGATCCCCCGGCCAGCCCGGCCGGCGGCCACCAC
 CTGGGCTACGACCCGACGCCGCTGCCGCGCTACGCTGCCGCTGGGAGCCGACGCCGCCGCGGGCAGCC
 AGGCCGCCGCGCTTGAGGGCCACCCGTACGGGCTGCCGCTGGCCAAGAGGGCGGCCCGCTGGCCTTCCC
 GCCTCTCGGCTCACGCCCTCCCCTACCGCTCCAGCCTGCTGGGCGAGAGTCCCAGCCTGCCGTCGCCG
 CCCAGCAGGAGCTCGTCGTCTGGCGAGGGCACGTGCGGTGTGCGGGGACAACGCCGCTGCCAGCACT
 ACGGCGTGCGAACCTGCGAGGGCTGCAAGGGCTTTTTCAAGAGAACAGTGCAGAAAAATGCAAAATATGT
 TTGCCTGGCAATAAAACTGCCAGTAGACAAGAGACGTGAAACCGATGTCAGTACTGTCGATTTTCA
 AAGTGTCTCAGTGTGGAATGGTAAAAGAAGTTGTCGTACAGATAGTCTGAAAGGGAGGAGAGGTGCTG
 TGCCTTCAAACCAAAGAGCCATTACAACAGGAACCTTCTCAGCCCTTCCACCTTCTCCCTCAATCTG
 CATGATGAATGCTTTGTCCGAGCTTAAACAGACTCAACACCCAGAGATCTTGATTATCCAGATACTGT
 CCCACTGACCAGGCTGCTGCAGGCACAGATGCTGAGCATGTGCAACAATTCTACAACCTCTGACAGCCT
 CCATTGATGATCCAGAAGCTGGGCAGAAAAGATTCCGGGATTTACTGATCTCCCAAAGAAGATCAGAC
 ATTACTTATTGAATCAGCCTTTTTGGAGCTGTTTGCCTCAGACTTCCATCAGGTCAAACACTGCTGAA
 GATAAGTTTGTCTGCAATGGACTTGTCTGCATCGACTTCAGTGCCTTCGTGGATTTGGGGAGTGGC
 TCGACTCTATTAAGACTTTTCTTAAATTTGCAGAGCCTGAACCTTGATATCCAAGCCTTAGCCTGCCT
 GTCAGCACTGAGCATGATCACAGAAAGACATGGGTTAAAAGAACCAAAGAGATCGAAGAGCTATGCAAC
 AAGATCACAAGCAGTTTAAAAGACCACCAGAGTAAGGGACAGGCTCTGGAGCCCACCGAGTCCAAGTCC
 TGGGTGCCCTGGTAGAAGTGAAGATCTGCACCCTGGGCTCCAGCGCATCTTCTACCTGAAGCTGGA
 AGACTTGGTGTCTCCACCTTCCATCATTGACAAGCTTCTCTGGACACCTACCTTTC

ACGCGTACGCGGCCGCTCGAGCAGAAACTCATCTCAGAAGAGGATCTGGCAGCAATGATATCCTGGATT
 ACAAGGATGACGACGATAAGGTTTAA

Protein Sequence:

>RC218250 representing NM_006981
 Red=Cloning site Green=Tags(s)

MPCVQAQYSPSPGSSYAAQYTSSEYTTIEMNPDYTKLTMDLGSTEITATATSLPSISTFVEGYSSNYE
 LKPSCVYQMRPLIKVEEGRAPSYHHHHHHHHHHHHHHQHQHQPSPIPPASSPEDEVLPSTSMYFKQSPP
 STPTTFAFPQAGALWDEALPSAPGCIAPGPLLDPPMKAVPTVAGARFPLFHFKPSPPHPPAPSPAGHH
 LGYDPTAAAALSLPLGAAAAGSQAAALEGHPYGLPLAKRAAPLAFPLGLTPSPTASSLLGESPLPSP
 PSRSSSGEGTCAVCGDNAACQHYGVRTCEGCKGFFKRTVQKNAKYVCLANKNCPVDKRRRNRCQYCRFQ
 KCLSVGMVKEVVRTDSLKGRRRLPSKPKSPLQEQSPSPSPSPICMMNALVRALTDSTPRDLDSRYC
 PTDQAAAGTDAEHVQFYNLLTASIDVSRSWAEKIPGFTDLPKEDQTLLESAFLELFVLRLSIRSNTAE
 DKFVFCNGLVHRLQCLRGFGEWLDSEIKDFSLNLQSLNLDIQALACLALSMTIRHGLKEPKRVEELCN
 KITSSLKDHQSKGQALEPTESKVLGALVELRKICTLGLQRIFYLKLEDLVSPPSIIDKFLDITLFP

TRTRPLEQKLISEEDLAANDILDYKDDDDKV

Chromatograms: https://cdn.origene.com/chromatograms/mg2995_c11.zip

Restriction Sites: SgfI-MluI

Cloning Scheme:



ACCN: NM_006981

ORF Size: 1878 bp

OTI Disclaimer: The molecular sequence of this clone aligns with the gene accession number as a point of reference only. However, individual transcript sequences of the same gene can differ through naturally occurring variations (e.g. polymorphisms), each with its own valid existence. This clone is substantially in agreement with the reference, but a complete review of all prevailing variants is recommended prior to use. [More info](#)

OTI Annotation: This clone was engineered to express the complete ORF with an expression tag. Expression varies depending on the nature of the gene.

Components: The ORF clone is ion-exchange column purified and shipped in a 2D barcoded Matrix tube containing 10ug of transfection-ready, dried plasmid DNA (reconstitute with 100 ul of water).

- Reconstitution Method:**
1. Centrifuge at 5,000xg for 5min.
 2. Carefully open the tube and add 100ul of sterile water to dissolve the DNA.
 3. Close the tube and incubate for 10 minutes at room temperature.
 4. Briefly vortex the tube and then do a quick spin (less than 5000xg) to concentrate the liquid at the bottom.
 5. Store the suspended plasmid at -20°C. The DNA is stable for at least one year from date of shipping when stored at -20°C.

Note: Plasmids are not sterile. For experiments where strict sterility is required, filtration with 0.22um filter is required.

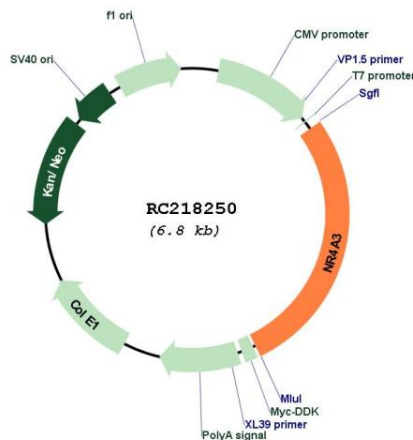
RefSeq: [NM_006981.4](#)

RefSeq Size: 5635 bp

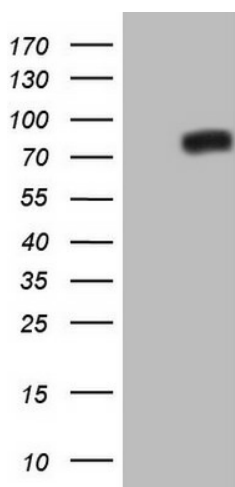
RefSeq ORF: 1881 bp
Locus ID: 8013
UniProt ID: [Q92570](#)
Cytogenetics: 9q31.1
Domains: HOLI, zf-C4
Protein Families: Druggable Genome, Nuclear Hormone Receptor, Transcription Factors
MW: 68 kDa

Gene Summary: This gene encodes a member of the steroid-thyroid hormone-retinoid receptor superfamily. The encoded protein may act as a transcriptional activator. The protein can efficiently bind the NGFI-B Response Element (NBRE). Three different versions of extraskeletal myxoid chondrosarcomas (EMCs) are the result of reciprocal translocations between this gene and other genes. The translocation breakpoints are associated with Nuclear Receptor Subfamily 4, Group A, Member 3 (on chromosome 9) and either Ewing Sarcome Breakpoint Region 1 (on chromosome 22), RNA Polymerase II, TATA Box-Binding Protein-Associated Factor, 68-KD (on chromosome 17), or Transcription factor 12 (on chromosome 15). Multiple transcript variants encoding different isoforms have been found for this gene. [provided by RefSeq, Mar 2010]

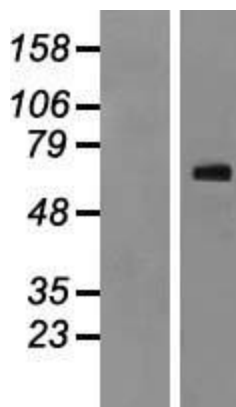
Product images:



Circular map for RC218250



HEK293T cells were transfected with the pCMV6-ENTRY control (Cat# [PS100001], Left lane) or pCMV6-ENTRY NR4A3 (Cat# RC218250, Right lane) cDNA for 48 hrs and lysed. Equivalent amounts of cell lysates (5 ug per lane) were separated by SDS-PAGE and immunoblotted with anti-NR4A3 (Cat# [TA804893]). Positive lysates [LY429326] (100ug) and [LC429326] (20ug) can be purchased separately from OriGene.



Western blot validation of overexpression lysate (Cat# [LY406643]) using anti-DDK antibody (Cat# [TA50011-100]). Left: Cell lysates from untransfected HEK293T cells; Right: Cell lysates from HEK293T cells transfected with [RC223576] using transfection reagent MegaTran 2.0 (Cat# [TT210002]).