

Product datasheet for **RC218239**

ARPP21 (NM_001025068) Human Tagged ORF Clone

Product data:

Product Type: Expression Plasmids
Product Name: ARPP21 (NM_001025068) Human Tagged ORF Clone
Tag: Myc-DDK
Symbol: ARPP21
Synonyms: ARPP-21; R3HDM3; RCS; TARPP
Mammalian Cell Selection: Neomycin
Vector: pCMV6-Entry (PS100001)
E. coli Selection: Kanamycin (25 ug/mL)
ORF Nucleotide Sequence: >RC218239 representing NM_001025068
Red=Cloning site Blue=ORF Green=Tags(s)

TTTTGTAATACGACTCACTATAGGGCGGCCGGAATTCGTCGACTGGATCCGGTACCGAGGAGATCTGCC
GCC**CGATCGCC**

ATGTCTGAGCAAGGAGACCTGAATCAGGCAATAGCAGAGGAAGGAGGGACTGAGCAGGAGACGGCCACTC
CAGAGAACGGCATTGTTAAATCAGAAAGTCTGGATGAAGAGGAGAACTGGAAGTGCAGAGGCGGCTGGA
GGCTCAGAATCAAGAAAGAAGAAAATCCAAGTCAGGAGCAGGAAAAGGTAAGTAACTGACTCGCAGTCTTGCT
GTCTGTGAGGAATCTTCTGCCAGACCAGGAGGTAAAAGTCTTCAGGATCAGACTCTC

ACGCGTACGCGGCCGCTCGAGCAGAAACTCATCTCAGAAGAGGATCTGGCAGCAAATGATATCCTGGATT
ACAAGGATGACGACGATAAGGTTTAA

Protein Sequence: >RC218239 representing NM_001025068
Red=Cloning site Green=Tags(s)
MSEQGDLNQAIAEEGGTEQETATPENGIVKSESLDEEEKLELQRRLEAQNQERRKSKSGAGKGLTRSLA
VCEESSARPGGESLQDQTL

TRTRPLEQKLISEEDLAANDILDYKDDDDKV

Chromatograms: https://cdn.origene.com/chromatograms/mk6493_g09.zip

Restriction Sites: Sgfl-MluI



[View online »](#)

Cloning Scheme:


ACCN: NM_001025068

ORF Size: 267 bp

OTI Disclaimer: The molecular sequence of this clone aligns with the gene accession number as a point of reference only. However, individual transcript sequences of the same gene can differ through naturally occurring variations (e.g. polymorphisms), each with its own valid existence. This clone is substantially in agreement with the reference, but a complete review of all prevailing variants is recommended prior to use. [More info](#)

OTI Annotation: This clone was engineered to express the complete ORF with an expression tag. Expression varies depending on the nature of the gene.

Components: The ORF clone is ion-exchange column purified and shipped in a 2D barcoded Matrix tube containing 10ug of transfection-ready, dried plasmid DNA (reconstitute with 100 ul of water).

Reconstitution Method:

1. Centrifuge at 5,000xg for 5min.
2. Carefully open the tube and add 100ul of sterile water to dissolve the DNA.
3. Close the tube and incubate for 10 minutes at room temperature.
4. Briefly vortex the tube and then do a quick spin (less than 5000xg) to concentrate the liquid at the bottom.
5. Store the suspended plasmid at -20°C. The DNA is stable for at least one year from date of shipping when stored at -20°C.

RefSeq: [NM_001025068.1](#), [NP_001020239.1](#)

RefSeq Size: 2409 bp

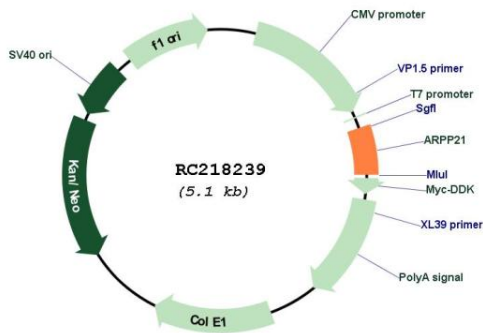
RefSeq ORF: 270 bp

Locus ID: 10777

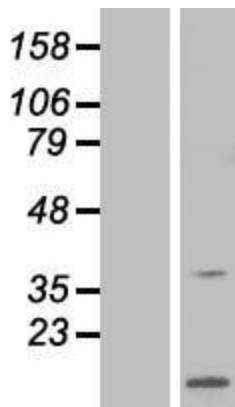
UniProt ID: [Q9UBL0](#)
 Cytogenetics: 3p22.3
 MW: 9.5 kDa

Gene Summary: This gene encodes a cAMP-regulated phosphoprotein. The encoded protein is enriched in the caudate nucleus and cerebellar cortex. A similar protein in mouse may be involved in regulating the effects of dopamine in the basal ganglia. Alternate splicing results in multiple transcript variants. [provided by RefSeq, Jun 2012]

Product images:



Circular map for RC218239



Western blot validation of overexpression lysate (Cat# [LY422573]) using anti-DDK antibody (Cat# [TA50011-100]). Left: Cell lysates from untransfected HEK293T cells; Right: Cell lysates from HEK293T cells transfected with [RC224485] using transfection reagent MegaTran 2.0 (Cat# [TT210002]).