

Product datasheet for RC218231

DUSP21 (NM_022076) Human Tagged ORF Clone

Product data:

Product Type: Expression Plasmids
Product Name: DUSP21 (NM_022076) Human Tagged ORF Clone
Tag: Myc-DDK
Symbol: DUSP21
Synonyms: LMWDSP21
Mammalian Cell Selection: Neomycin
Vector: pCMV6-Entry (PS100001)
E. coli Selection: Kanamycin (25 ug/mL)
ORF Nucleotide Sequence: >RC218231 ORF sequence
 Red=Cloning site Blue=ORF Green=Tags(s)

TTTTGTAATACGACTCACTATAGGGCGGCCGGAATTCGTCGACTGGATCCGGTACCGAGGAGATCTGCC
 GCC**CGATCGCC**

ATGACAGCATCCGCGTCTCTTTTCATCATCTCAGGGTGTCAGCAGCCCTCCATCTACAGTTCTCCC
 AAATAACCAGAAGCTTGTTCAGCAATGGTGTGGCCGCAACGACAACTCCTTCTGTCCAGCAATCG
 CATCACCGCCATTGTCAATGCCTCGGTGGAAGTGGTCAACGTATTCTCGAGGGCATTAGTACATAAAG
 GTGCCTGTTACCGATGCTCGTACTCGCGTCTCTACGACTTTTTTGACCCATTGCTGATCTTATCCACA
 CCATCGATATGAGGCAGGCGGTACGCTGCTGCACTGCATGGCTGGAGTGAGCCGTTCCGCCTACTGTG
 CCTTGCCTACCTCATGAAATACCACTCCATGTCGCTGCTGGACGCCATACATGGACCAAGTCGCGCCGC
 CCCATCATCCGGCCCAACAACGGCTTTTGGGAACAGCTCATCAATTACGAATCAAGCTGTTTAATAACA
 ACACCGTGCATGATCAACTCGCCGTAGGTAACATCCCTGACATCTATGAGAAGGACCTACGTATGAT
 GATATCAATG

ACGCGTACGCGGCCGCTCGAGCAGAACTCATCTCAGAAGAGGATCTGGCAGCAAATGATATCCTGGATT
 ACAAGGATGACGACGATAAGGTTTAA

Protein Sequence: >RC218231 protein sequence
 Red=Cloning site Green=Tags(s)

MTASASSFSSSQGVQPSIYSFSQITRSLFLSNGVAANDKLLSSNRITAIVNASVEVVNVFFEGIQYIK
 VPVTDARDSRLYDFDPIADLIHTIDMRQGRLLHCMAGVSRASLCLAYLMKYHMSLLDAHTWTKSRR
 PIIRPNNGFWEQLINYEKFLFNNNTVRMINSPVGNIPDIYEKDLRMMISM

TRTRPLEQKLISEEDLAANDILDYKDDDDKV



[View online »](#)

Chromatograms: https://cdn.origene.com/chromatograms/mk6442_d05.zip

Restriction Sites: SgfI-MluI

Cloning Scheme:



ACCN: NM_022076

ORF Size: 570 bp

OTI Disclaimer: The molecular sequence of this clone aligns with the gene accession number as a point of reference only. However, individual transcript sequences of the same gene can differ through naturally occurring variations (e.g. polymorphisms), each with its own valid existence. This clone is substantially in agreement with the reference, but a complete review of all prevailing variants is recommended prior to use. [More info](#)

OTI Annotation: This clone was engineered to express the complete ORF with an expression tag. Expression varies depending on the nature of the gene.

Components: The ORF clone is ion-exchange column purified and shipped in a 2D barcoded Matrix tube containing 10ug of transfection-ready, dried plasmid DNA (reconstitute with 100 ul of water).

- Reconstitution Method:**
1. Centrifuge at 5,000xg for 5min.
 2. Carefully open the tube and add 100ul of sterile water to dissolve the DNA.
 3. Close the tube and incubate for 10 minutes at room temperature.
 4. Briefly vortex the tube and then do a quick spin (less than 5000xg) to concentrate the liquid at the bottom.
 5. Store the suspended plasmid at -20°C. The DNA is stable for at least one year from date of shipping when stored at -20°C.

RefSeq: [NM_022076.4](#)

RefSeq Size: 889 bp

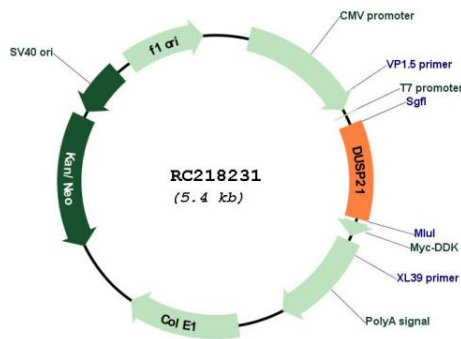
RefSeq ORF: 573 bp

Locus ID: 63904

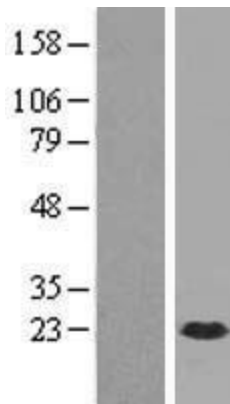
UniProt ID: [Q9H596](#)
 Cytogenetics: Xp11.3
 Protein Families: Druggable Genome, Phosphatase
 MW: 21.5 kDa

Gene Summary: This gene encodes a member of the dual specificity phosphatase family, specifically the low molecular weight dual specificity phosphatase family. The encoded protein localizes to both the cytoplasm and the nucleus and functions to remove phosphate groups from phosphotyrosine and phosphothreonine residues.[provided by RefSeq, Mar 2009]

Product images:



Circular map for RC218231



Western blot validation of overexpression lysate (Cat# [LY411799]) using anti-DDK antibody (Cat# [TA50011-100]). Left: Cell lysates from untransfected HEK293T cells; Right: Cell lysates from HEK293T cells transfected with RC218231 using transfection reagent MegaTran 2.0 (Cat# [TT210002]).