

## Product datasheet for RC218227

### CCXCR1 (XCR1) (NM\_005283) Human Tagged ORF Clone

#### Product data:

Product Type:	Expression Plasmids
Product Name:	CCXCR1 (XCR1) (NM_005283) Human Tagged ORF Clone
Tag:	Myc-DDK
Symbol:	CCXCR1
Synonyms:	CCXCR1; GPR5
Mammalian Cell Selection:	Neomycin
Vector:	pCMV6-Entry (PS100001)
E. coli Selection:	Kanamycin (25 ug/mL)
ORF Nucleotide Sequence:	>RC218227 ORF sequence Red=Cloning site Blue=ORF Green=Tags(s)

TTTTGTAATACGACTCACTATAGGGCGGCCGGAATTCGTCGACTGGATCCGGTACCGAGGAGATCTGCC  
GCC**CGATCGCC**

ATGGAGTCCTCAGGCAACCCAGAGAGCACCACCTTTTTTACTATGACCTTCAGAGCCAGCCGTGTGAGA  
ACCAGGCCTGGTCTTTGCTACCCTCGCCACCACTGTCTATACTGCCTGGTGTCTCCTCAGCCTAGT  
GGGCAACAGCCTGGTCTGTGGTCTGGTGAAGTATGAGAGCCTGGAGTCCCTACCAACATCTTCATC  
CTCAACCTGTGCCTCTCAGACCTGGTGTTCGCTGCTTGTGCCTGTGTGGATCTCCCCATACCACTGGG  
GCTGGGTGCTGGGAGACTTCTCTGCAAACCTCCTCAATATGATCTTCTCCATCAGCCTCTACGGCAGCAT  
TTCTTCTGACCATCATGACCATCCACCCTACCTGTCGGTAGTGAGCCCTCTCCACCCTGCGCGTC  
CCCACCCTCCGCTGCCGGGTGCTGGTGACCATGGCTGTGTGGGTAGCCAGCATCCTGTCTCCATTCCTG  
ACACCATCTTCCACAAGGTGCTTTCTTCGGGCTGTGATTATCCGAACTCACGTGGTACCTCACCTCCGT  
CTACCAGCACAACCTCTTCTTCTGCTGTCCCTGGGGATTATCCTGTTCTGCTACGTGGAGATCCTCAGG  
ACCCTGTTCCGCTCAGCTCCAAGCGGCCACCACCGTCAAGCTCATCTTCGCCATCGTGGTGGCT  
ACTTCTCAGTGGGGTCCCTACAACCTCACCTGTTTCTGCAGACGCTGTTTCGGACCCAGATCATCCG  
GAGCTGCGAGGCCAAACAGCAGCTAGAATACGCCCTGCTCATCTGCCGCAACCTCGCCTTCTCCCCTGC  
TGCTTTAACCCGGTGTCTATGTCTTCTGTTGGGGTCAAGTCCGCACACACCTGAAACATGTTCTCCGGC  
AGTTCTGGTTCTGCCGGCTGCAGGCACCCAGCCAGCCTCGATCCCCACTCCCCTGGTGCCTTCGCTA  
TGAGGGCGCCTCTTCTAC

**ACGCGT**ACGCGGCCGCTCGAGCAGAACTCATCTCAGAAGAGGATCTGGCAGCAAATGATATCCTGGATT  
ACAAGGATGACGACGATAAGGTTTAA



[View online »](#)

**Protein Sequence:** >RC218227 protein sequence  
Red=Cloning site Green=Tags(s)

MESSGNPESTTFFYYDLQSQPCENQAWVFATLATTVLVYCLVFLSLVGNLSLVLWLVKYESLESLESTNIFI  
 LNLCLSDLVFACLLPVWISPYHWGWLGDFLCKLLNMIFSISLYGSIFFLTIMTIHRYLSVVSPLSTLRV  
 PTLRCRVLVTMAVWVASILSSILDTIFHKVLSGGDYSELTWYLT SVYQHNLFFLLSLGILFCYVEILR  
 TLFRRSRKRRHRTVKLIFAIVVAYFLSWGPYNFTLFLQTLFRTQIIRSCEAKQOLEYALLICRNLAFSHC  
 CFNPVLYVFGVKFRTHLKHVLRQFWFCRLQAPSPASIPHSPGAFAYEGASFY

TRTRPLEQKLISEEDLAANDILDYKDDDDKV

**Chromatograms:** [https://cdn.origene.com/chromatograms/mk6599\\_f02.zip](https://cdn.origene.com/chromatograms/mk6599_f02.zip)

**Restriction Sites:** SgfI-MluI

**Cloning Scheme:**



**ACCN:** NM\_005283

**ORF Size:** 999 bp

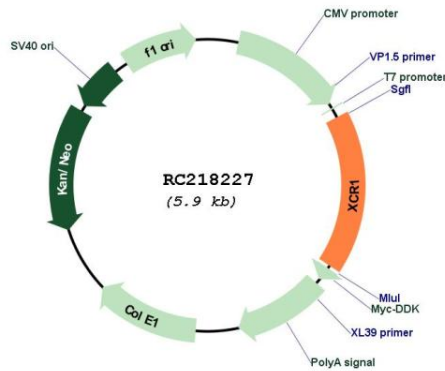
**OTI Disclaimer:** The molecular sequence of this clone aligns with the gene accession number as a point of reference only. However, individual transcript sequences of the same gene can differ through naturally occurring variations (e.g. polymorphisms), each with its own valid existence. This clone is substantially in agreement with the reference, but a complete review of all prevailing variants is recommended prior to use. [More info](#)

**OTI Annotation:** This clone was engineered to express the complete ORF with an expression tag. Expression varies depending on the nature of the gene.

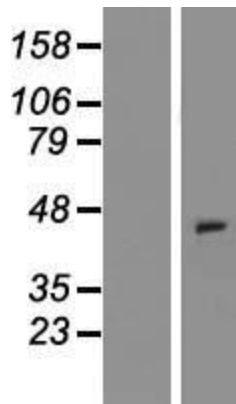
**Components:** The ORF clone is ion-exchange column purified and shipped in a 2D barcoded Matrix tube containing 10ug of transfection-ready, dried plasmid DNA (reconstitute with 100 ul of water).

<b>Reconstitution Method:</b>	<ol style="list-style-type: none"><li>1. Centrifuge at 5,000xg for 5min.</li><li>2. Carefully open the tube and add 100ul of sterile water to dissolve the DNA.</li><li>3. Close the tube and incubate for 10 minutes at room temperature.</li><li>4. Briefly vortex the tube and then do a quick spin (less than 5000xg) to concentrate the liquid at the bottom.</li><li>5. Store the suspended plasmid at -20°C. The DNA is stable for at least one year from date of shipping when stored at -20°C.</li></ol>
<b>Note:</b>	Plasmids are not sterile. For experiments where strict sterility is required, filtration with 0.22um filter is required.
<b>RefSeq:</b>	<a href="#">NM_005283.3</a>
<b>RefSeq Size:</b>	1373 bp
<b>RefSeq ORF:</b>	1002 bp
<b>Locus ID:</b>	2829
<b>UniProt ID:</b>	<a href="#">P46094</a>
<b>Cytogenetics:</b>	3p21.31
<b>Protein Families:</b>	Druggable Genome, GPCR, Transmembrane
<b>Protein Pathways:</b>	Chemokine signaling pathway, Cytokine-cytokine receptor interaction
<b>MW:</b>	38.5 kDa
<b>Gene Summary:</b>	The protein encoded by this gene is a chemokine receptor belonging to the G protein-coupled receptor superfamily. The family members are characterized by the presence of 7 transmembrane domains and numerous conserved amino acids. This receptor is most closely related to RBS11 and the MIP1-alpha/RANTES receptor. It transduces a signal by increasing the intracellular calcium ions level. The viral macrophage inflammatory protein-II is an antagonist of this receptor and blocks signaling. Several alternatively spliced transcript variants encoding the same protein have been found for this gene. [provided by RefSeq, Apr 2020]

Product images:



Circular map for RC218227



Western blot validation of overexpression lysate (Cat# [LY422523]) using anti-DDK antibody (Cat# [TA50011-100]). Left: Cell lysates from untransfected HEK293T cells; Right: Cell lysates from HEK293T cells transfected with [RC218227] using transfection reagent MegaTran 2.0 (Cat# [TT210002]).